

Figure S1 Global temporal patterns of cirrhosis and other chronic liver diseases due to hepatitis B, 1990–2019.

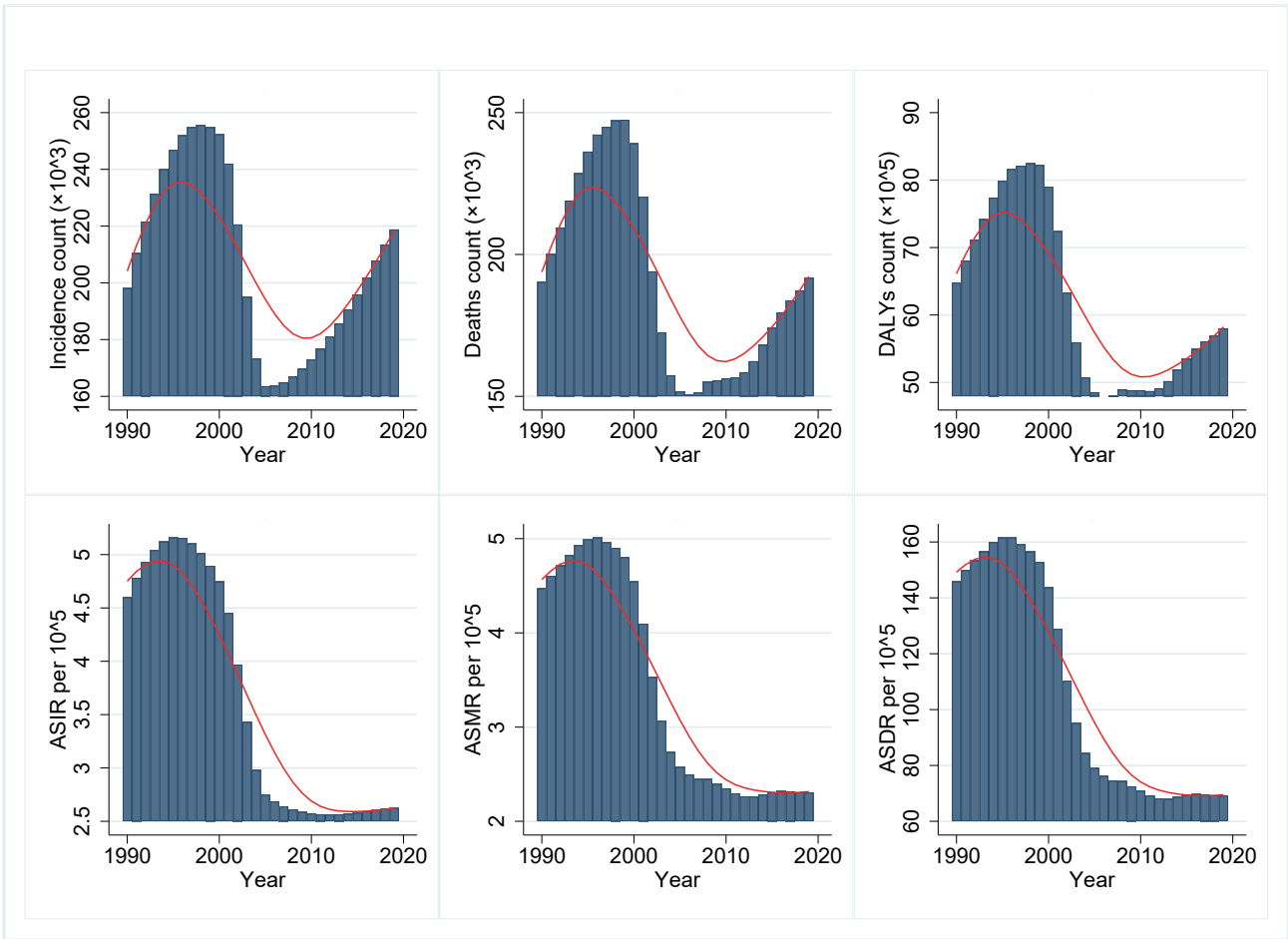


Figure S2 Global temporal patterns of liver cancer due to hepatitis B, 1990–2019.

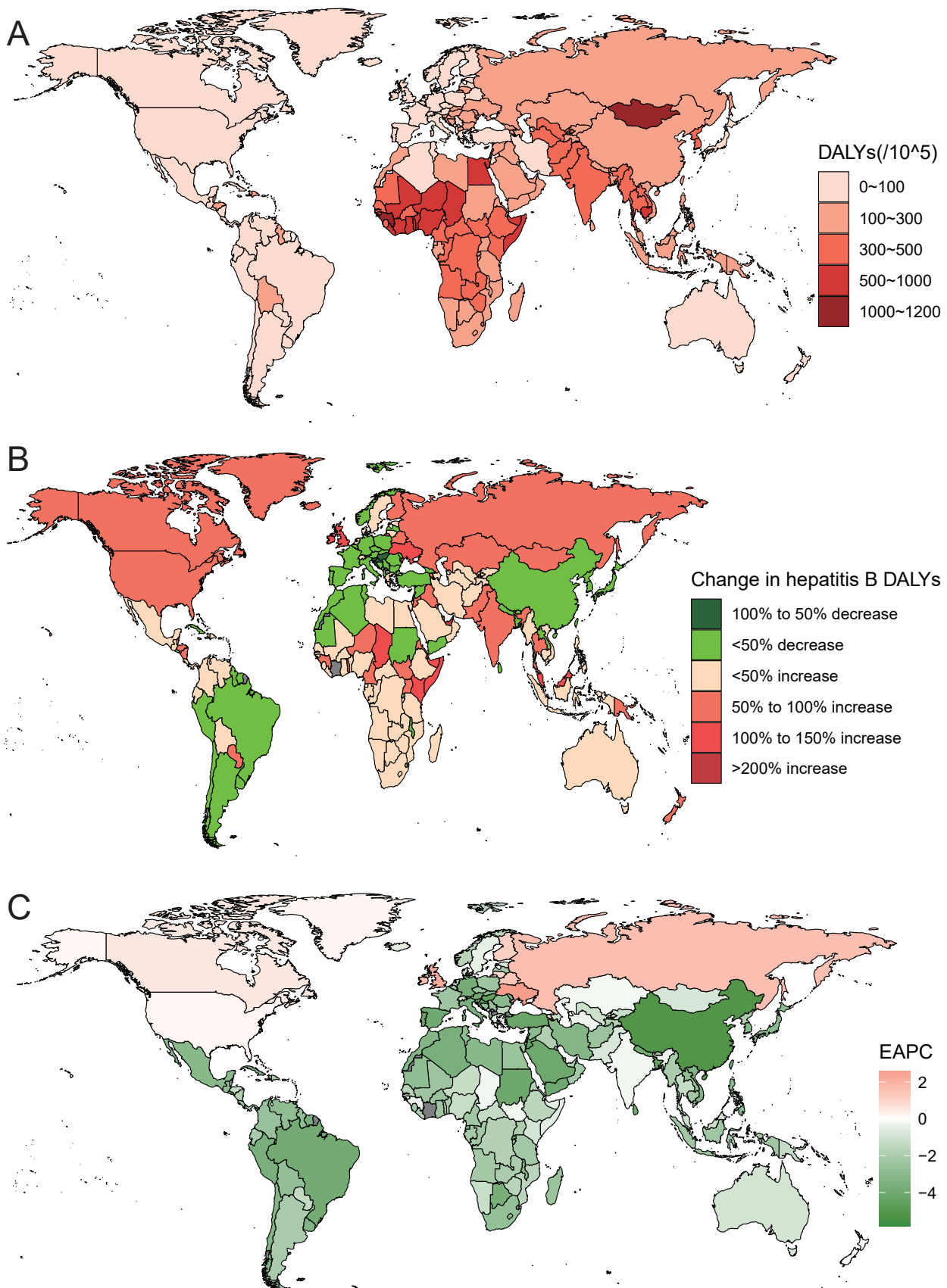


Figure S3 Geographical distribution of global disease burden of hepatitis B DALYs in all countries and territories.

(A) ASDR of hepatitis B in 2019;

(B) The relative change in DALYs counts of hepatitis B between 1990 and 2019;

(C) The EAPC of hepatitis B ASDR from 1990 to 2019.

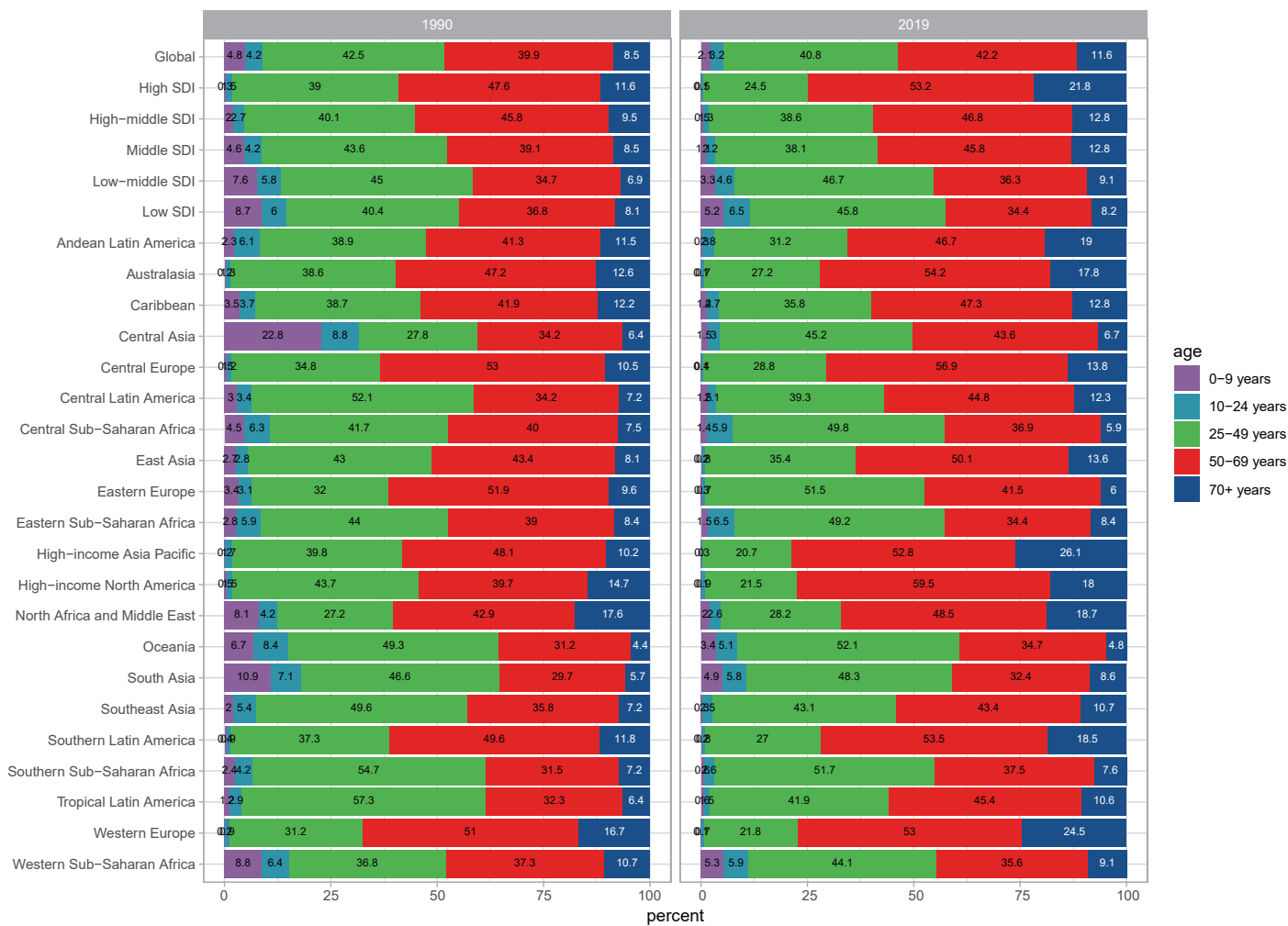


Figure S4 Age distribution of DALYs counts of hepatitis B by globally and region in 1990 and 2019.

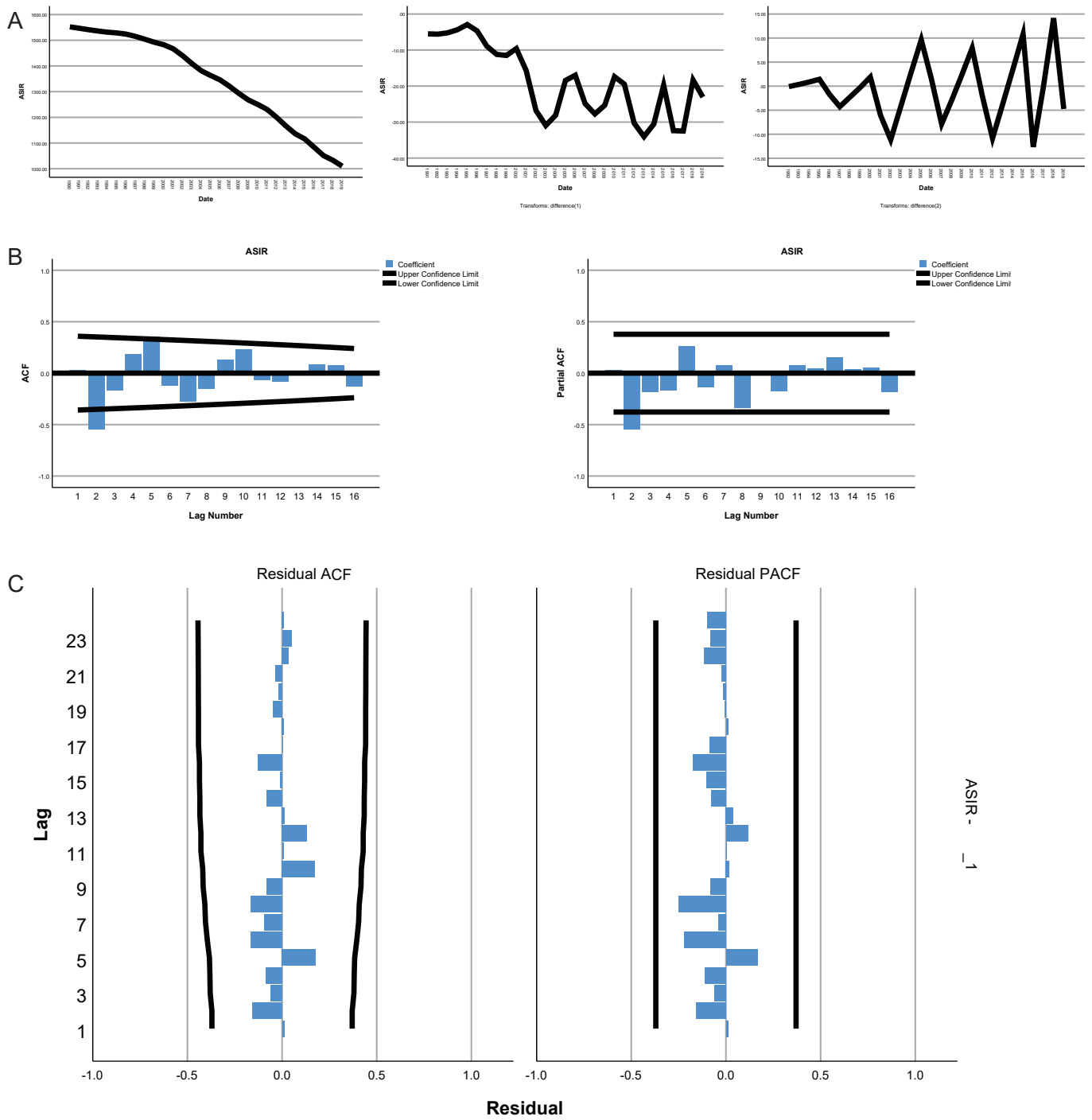


Figure S5 ASIR time series analysis.

(A) ASIR differential transform timing diagram, in order of difference-0, -1, and -2 transforms;

(B) ACF and PACF plots of ARIMA (2,2,0) model;

(C) ACF and PACF plots of the residuals. ACF: autocorrelation function

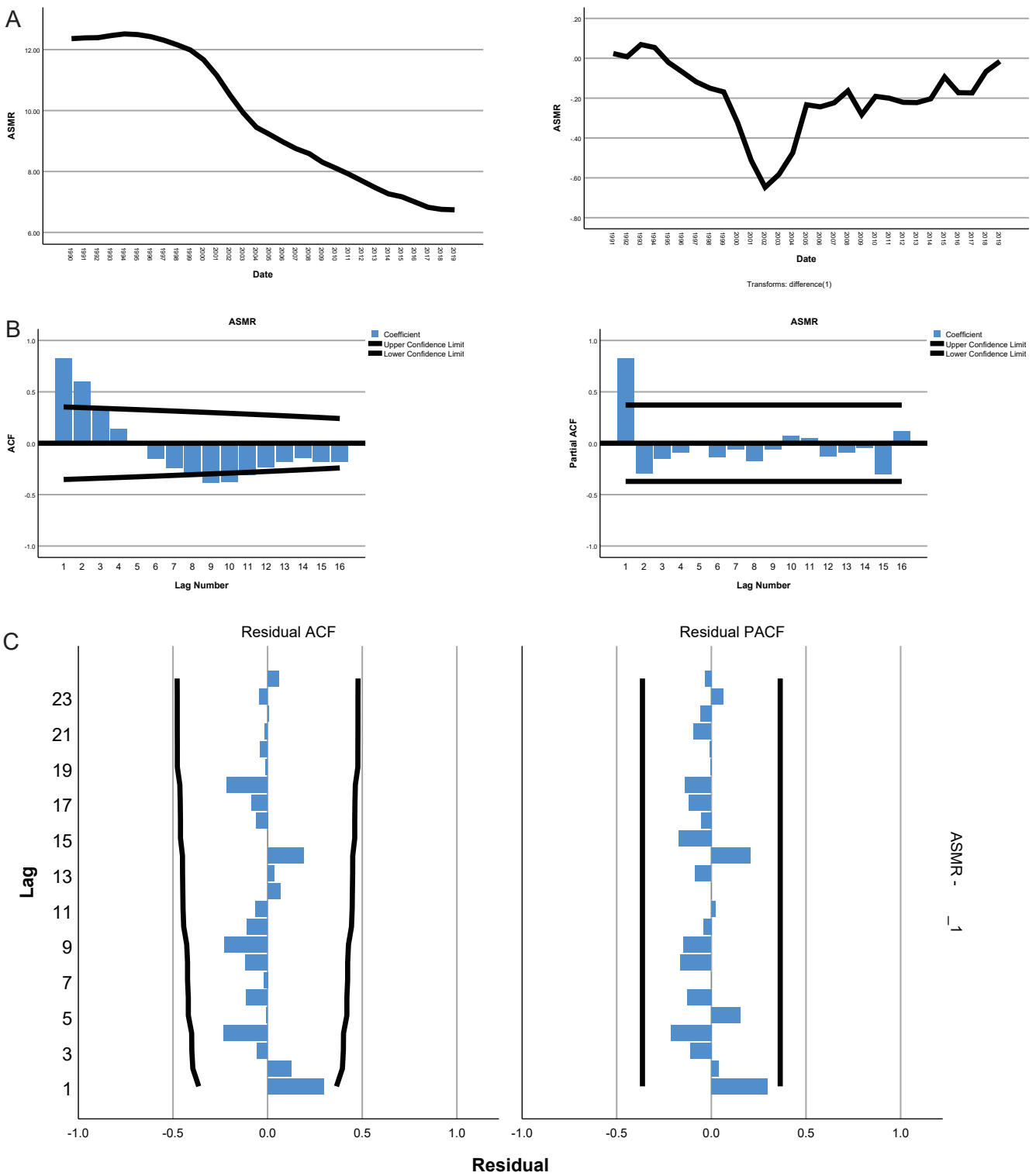


Figure S6 ASMR time series analysis.

(A) ASMR differential transform timing diagram, in order of difference-0, and -1 transforms;

(B) ACF and PACF plots of ARIMA (1,1,0) model;

(C) ACF and PACF plots of the residuals. ACF: autocorrelation function

Table S1 Region-wise incidence of hepatitis B

| location | Num_1990 (No. ×10 ⁵) | ASR_1990 | Num_2019 (No. ×10 ⁵) | ASR_2019 | EAPC_CI | Num_change% |
|-----------------|----------------------------------|------------------------|----------------------------------|-----------------------|---------------------|-------------|
| Global | 844.5 (693.8-1010.3) | 1552.2 (1288.3-1842.4) | 806.5 (646.6-990.7) | 1010 (811.7-1234.1) | -1.52 (-1.66--1.38) | -4.5 |
| High SDI | 51.6 (43.2-60.6) | 621.6 (525.9-726.7) | 42 (34.3-50.1) | 364.6 (299.2-435.8) | -1.75 (-1.83--1.66) | -18.6 |
| High-middle SDI | 158.4 (128.4-189.3) | 1341.4 (1094.7-1597.7) | 119.2 (89.1-151) | 722.5 (542.7-910.5) | -2.2 (-2.47--1.94) | -24.7 |
| Middle SDI | 353.6 (289.8-424.5) | 2043.5 (1700.1-2442.3) | 286.9 (225-353) | 1106.1 (870.8-1353.6) | -2.12 (-2.26--1.97) | -18.9 |
| Low-middle SDI | 173 (142.1-209.3) | 1546.1 (1256.9-1857.3) | 193.3 (155.2-236.1) | 1084.2 (874.3-1320.5) | -1.25 (-1.34--1.16) | 11.7 |
| Low SDI | 107.6 (89-129.3) | 2067.2 (1724-2459) | 164.7 (134.6-200.3) | 1580.3 (1294.6-1913) | -0.96 (-1.07--0.84) | 53.1 |
| Andean America | Latin 1.1 (1-1.3) | 318.2 (278.6-363.6) | 1.6 (1.4-1.9) | 257.4 (221.9-297.8) | -0.72 (-0.8--0.64) | 45.5 |
| Australasia | 1.9 (1.5-2.2) | 892.7 (739.8-1061.9) | 1.8 (1.5-2.3) | 549.1 (440.2-663.6) | -1.54 (-1.62--1.45) | -5.3 |
| Caribbean | 0.9 (0.7-1.1) | 251.7 (201.2-305.8) | 1 (0.8-1.3) | 214.6 (162.2-267.4) | -0.6 (-0.73--0.47) | 11.1 |
| Central Asia | 8.5 (6.5-10.6) | 1218.6 (937.6-1509.9) | 8.3 (6.5-10.6) | 851.1 (663.5-1077.4) | -1.26 (-1.44--1.08) | -2.4 |
| Central Europe | 5.1 (4.4-5.9) | 411.6 (353.3-475.3) | 2.6 (2.2-3.2) | 199.9 (165.6-241.3) | -2.59 (-2.7--2.49) | -49.0 |

| | | | | | | | |
|------------------------------|---------------------|-------------------|----------|---------------------|---------------------|---------------------|-------|
| Central Latin America | 6.7 (5.3-8.2) | 399.7 490.8) | (318- | 5.6 (4.2-7.3) | 219 (163.6-281.6) | -2.01 (-2.16--1.87) | -16.4 |
| Central Sub-Saharan Africa | 11.7 (9.3-14.5) | 2144.8 2640.6) | (1723.4- | 20.8 (16-26.2) | 1711.8 2123.4) | -0.67 (-0.81--0.53) | 77.8 |
| East Asia | 349.9 (280.2-424.8) | 2758 3317.9) | (2229.9- | 245.9 (182.6-314.9) | 1419.8 1798.7) | -2.33 (-2.55--2.11) | -29.7 |
| Eastern Europe | 5.2 (4.1-6.5) | 238.6 295.2) | (187.2- | 3.1 (2.3-4.1) | 141.2 (104.9-183.2) | -1.51 (-2.05--0.97) | -40.4 |
| Eastern Sub-Saharan Africa | 40.9 (33.7-48.9) | 2137.8 2536.2) | (1768.2- | 55.3 (44.9-67.8) | 1503.3 1837.1) | -1.25 (-1.4--1.11) | 35.2 |
| High-income Asia Pacific | 21 (17.4-25) | 1179.2 1392.6) | (982.2- | 15.9 (13-19.1) | 770.3 (641.8-910.4) | -1.38 (-1.44--1.33) | -24.3 |
| High-income North America | 5.1 (4-6.3) | 180.3 220) | (143.9- | 4.1 (3.1-5.1) | 101.7 (80-126.4) | -1.92 (-2.03--1.82) | -19.6 |
| North Africa and Middle East | 53.2 (45.6-61.8) | 1627 1874) | (1397.9- | 59.3 (50.5-69.9) | 966.1 (822-1133.1) | -1.79 (-1.88--1.69) | 11.5 |
| Oceania | 1.8 (1.4-2.2) | 2833.8 3432.2) | (2219.7- | 2.3 (1.8-2.8) | 1849.6 2289.3) | -1.26 (-1.38--1.14) | 27.8 |
| South Asia | 120.9 (98.5-145.6) | 1109.8 1332.6) | (899.5- | 148.5 (118.4-181) | 801.1 (643.3-971.1) | -1.12 (-1.22--1.02) | 22.8 |
| Southeast Asia | 97.1 (79.8-116.2) | 2039.3 2421.7) | (1702.3- | 89.1 (71.6-109.5) | 1253.4 1532.6) | -1.63 (-1.77--1.5) | -8.2 |
| Southern America | 0.9 (0.8-1.1) | 191.5 223.3) | (162.3- | 1.1 (0.9-1.3) | 150.8 (126-179.8) | -0.91 (-0.99--0.83) | 22.2 |
| Southern Sub- | 8.4 (6.5-10.5) | 1471.8 | (1134- | 6.3 (4.8-8.1) | 771.2 (588-985.3) | -2.27 (-2.34--2.21) | -25.0 |

| | | | | | | | | | |
|----------------------------|------------------|------------------------|--------------------|------------------------|---------------------|-------|--|--|--|
| Saharan Africa | | | 1836.6) | | | | | | |
| Tropical Latin America | 27.8 (22.7-33.4) | 1789.8 (1468.3-2145) | 20.5 (15.4-26.1) | 828.4 (627.8-1055.2) | -2.85 (-3.06--2.64) | -26.3 | | | |
| Western Europe | 11.4 (9.3-13.7) | 302.8 (251.4-357.2) | 8.5 (6.5-10.4) | 186.3 (148.2-227.6) | -1.61 (-1.7--1.53) | -25.4 | | | |
| Western Sub-Saharan Africa | 65.1 (53.2-77.9) | 3501.9 (2901.8-4183.7) | 104.7 (85.8-126.7) | 2539.3 (2065.1-3059.8) | -1.11 (-1.21--1.01) | 60.8 | | | |

Table S2 Region-wise deaths of hepatitis B

| location | Num_1990 | ASR_1990 | Num_2019 | ASR_2019 | EAPC_CI | Num_change% |
|----------------------|---------------------|-----------------|---------------------|----------------|---------------------|-------------|
| Global | 524.5 (468.3-585) | 12.4 (11-13.8) | 555.5 (487.1-630.1) | 6.7 (5.9-7.6) | -2.55 (-2.74--2.35) | 5.9 |
| High SDI | 36.3 (32.2-41.1) | 3.7 (3.3-4.2) | 40.5 (35.2-46.5) | 2.4 (2.1-2.7) | -1.81 (-2.01--1.62) | 11.6 |
| High-middle SDI | 117.3 (102.8-133.6) | 10.7 (9.4-12.2) | 89.4 (76.7-102) | 4.5 (3.9-5.2) | -3.87 (-4.22--3.51) | -23.8 |
| Middle SDI | 214.2 (190.6-240) | 19 (17-21.4) | 213.4 (185-242.6) | 8.4 (7.3-9.6) | -3.39 (-3.65--3.14) | -0.4 |
| Low-middle SDI | 106.3 (92.2-122.2) | 15.6 (13.5-18) | 141.2 (120.9-163.1) | 9.7 (8.3-11.2) | -1.67 (-1.8--1.54) | 32.8 |
| Low SDI | 50.3 (41.2-61.6) | 19 (15.5-23.6) | 70.9 (59.1-84.3) | 12 (10-14.4) | -1.59 (-1.8--1.37) | 41.0 |
| Andean Latin America | 1.3 (1.1-1.7) | 6 (4.9-7.5) | 1.7 (1.3-2.2) | 3 (2.2-3.9) | -2.73 (-2.9--2.55) | 30.8 |
| Australasia | 0.4 (0.3-0.5) | 1.7 (1.4-2.1) | 0.6 (0.5-0.8) | 1.4 (1.2-1.7) | -0.8 (-0.97--0.63) | 50.0 |
| Caribbean | 1.2 (1-1.5) | 4.6 (3.6-5.7) | 1.3 (0.9-1.7) | 2.5 (1.8-3.3) | -2.36 (-2.82--1.91) | 8.3 |

| | | | | | | |
|------------------------------|---------------------|------------------|---------------------|----------------|---------------------|-------|
| Central Asia | 5 (4.1-6) | 9.4 (7.6-11.4) | 7.6 (5.7-9.8) | 9.3 (7.1-11.9) | -0.33 (-0.96-0.31) | 52.0 |
| Central Europe | 11.5 (9.4-13.6) | 7.9 (6.5-9.3) | 7.7 (5.9-9.9) | 4.1 (3.2-5.2) | -3.04 (-3.36--2.72) | -33.0 |
| Central Latin America | 2.4 (2.1-2.8) | 2.5 (2.2-2.9) | 3.5 (2.9-4.3) | 1.5 (1.2-1.8) | -2.55 (-2.77--2.32) | 45.8 |
| Central Sub-Saharan Africa | 5.3 (3.8-7.2) | 20.7 (14.9-27.6) | 7 (4.9-9.7) | 11 (7.8-15.3) | -1.94 (-2.21--1.66) | 32.1 |
| East Asia | 235.8 (200.7-277.7) | 24.5 (21-28.7) | 169.5 (140-202.5) | 8.2 (6.8-9.7) | -4.84 (-5.28--4.41) | -28.1 |
| Eastern Europe | 7.3 (6.4-8.4) | 2.7 (2.4-3.1) | 11.9 (9.6-14.2) | 4 (3.3-4.8) | 1.22 (0.12-2.33) | 63.0 |
| Eastern Sub-Saharan Africa | 13.3 (9.8-17.8) | 15.9 (12.2-20.8) | 18.8 (15.1-23.3) | 10 (8-12.5) | -1.59 (-1.87--1.31) | 41.4 |
| High-income Asia Pacific | 17.6 (16-19.2) | 8.6 (7.9-9.4) | 19.8 (17.1-22.4) | 5.2 (4.5-5.8) | -1.87 (-2.12--1.62) | 12.5 |
| High-income North America | 2.7 (2.4-3) | 0.8 (0.7-0.9) | 4.9 (4.3-5.7) | 0.9 (0.7-1) | 0.49 (0.39-0.58) | 81.5 |
| North Africa and Middle East | 34.3 (26.8-43.8) | 21 (16.1-26.9) | 36.6 (27.1-48.2) | 8.8 (6.4-11.6) | -3.29 (-3.45--3.13) | 6.7 |
| Oceania | 0.4 (0.3-0.5) | 9.8 (7.8-12.3) | 0.6 (0.4-0.7) | 6.5 (5-8.3) | -1.42 (-1.5--1.34) | 50.0 |
| South Asia | 83.7 (70-102.2) | 12.6 (10.8-14.9) | 137.4 (114.5-165.1) | 9.1 (7.7-10.9) | -0.88 (-1.07--0.68) | 64.2 |
| Southeast Asia | 49.3 (42.6-57.2) | 17 (14.7-19.9) | 63.7 (53.4-76.3) | 10 (8.4-11.9) | -2.08 (-2.22--1.94) | 29.2 |
| Southern Latin America | 1.8 (1.3-2.4) | 3.9 (2.8-5.1) | 1.7 (1.2-2.2) | 2.1 (1.5-2.7) | -2.16 (-2.43--1.88) | -5.6 |
| Southern Sub-Saharan Africa | 3.2 (2.4-4.1) | 10 (7.5-13.1) | 3.5 (3-4.1) | 5.6 (4.8-6.5) | -2.32 (-2.76--1.89) | 9.4 |
| Tropical Latin America | 5.9 (5.3-6.5) | 5.6 (5.1-6.2) | 5.6 (5-6.3) | 2.2 (2-2.5) | -3.64 (-4.02--3.25) | -5.1 |

| | | | | | | |
|----------------------------|------------------|----------------|------------------|----------------|---------------------|-------|
| Western Europe | 11.9 (9.7-14.6) | 2.3 (1.8-2.7) | 10.1 (8.2-12.2) | 1.3 (1-1.5) | -2.33 (-2.47--2.19) | -15.1 |
| Western Sub-Saharan Africa | 30.2 (22.6-39.9) | 31.8 (24-41.7) | 42.2 (32.8-53.9) | 20 (15.8-25.1) | -1.54 (-1.73--1.36) | 39.7 |

Table S3 Region-wise DALYs of hepatitis B

| location | Num_1990 | ASR_1990 | Num_2019 | ASR_2019 | EAPC_CI | Num_change% |
|----------------------|---------------------|---------------------|-------------------|---------------------|---------------------|-------------|
| Global | 186.3 (166.7-209.2) | 410 (367.5-457.5) | 182 (159.1-205.7) | 219.9 (192.9-247.8) | -2.58 (-2.76--2.39) | -2.3 |
| High SDI | 11.6 (10.3-12.9) | 122.2 (108.4-136.7) | 10.5 (9.2-12) | 69.5 (60.9-79.4) | -2.23 (-2.44--2.03) | -9.5 |
| High-middle SDI | 39.5 (34.7-45) | 349.4 (307.1-398.3) | 28 (24.2-32) | 147.1 (127.6-167.4) | -3.9 (-4.26--3.55) | -29.1 |
| Middle SDI | 76.3 (67.6-86) | 591 (526.2-661.9) | 67.3 (58.3-76.3) | 252.7 (220.3-286.3) | -3.52 (-3.79--3.26) | -11.8 |
| Low-middle SDI | 40.4 (34.4-48.5) | 502.6 (435.6-577) | 50 (42.4-58.1) | 314.1 (267.1-362.5) | -1.6 (-1.74--1.46) | 23.8 |
| Low SDI | 18.5 (15-23) | 573 (473-697.8) | 26 (21.6-31.1) | 365.9 (304.2-436.8) | -1.54 (-1.76--1.32) | 40.5 |
| Andean Latin America | 0.4 (0.4-0.6) | 177.4 (144.6-224.1) | 0.5 (0.4-0.6) | 81.1 (59.6-108) | -3.07 (-3.25--2.9) | 25.0 |
| Australasia | 0.1 (0.1-0.1) | 54.7 (44.1-66.5) | 0.2 (0.1-0.2) | 43.9 (35.5-54) | -0.84 (-1--0.68) | 100.0 |
| Caribbean | 0.4 (0.3-0.5) | 141 (112.4-178.5) | 0.4 (0.3-0.5) | 77.4 (56.4-105.7) | -2.32 (-2.78--1.86) | 0.0 |
| Central Asia | 2 (1.7-2.4) | 333.8 (276.3-394.7) | 2.7 (2-3.5) | 297.3 (228.4-381.5) | -0.68 (-1.29--0.07) | 35.0 |

| | | | | | | |
|------------------------------|---------------------|------------------|-----------------------------|------------------|--------------------------------|-------|
| Central Europe | 3.6 (3-4.3) | 252 295.7) | (209.2- 2.2 (1.7-2.9) | 130.7 166.2) | (101.3- -3.11 (-3.46--2.77) | -38.9 |
| Central Latin America | 0.9 (0.8-1) | 82.2 (72.6-93.5) | 1.1 (0.9-1.4) | 45.2 (36.5-55.2) | -2.8 (-3.04--2.55) | 22.2 |
| Central Sub-Saharan Africa | 1.9 (1.4-2.6) | 619.2 835.5) | (450- 2.6 (1.8-3.6) | 341.8 470.7) | (237.8- -1.83 (-2.1--1.57) | 36.8 |
| East Asia | 82.8 (70.6-96.7) | 788.1 919.5) | (673.6- 52.1 (42.6-62.3) | 250.4 299) | (206.1- -5.06 (-5.54--4.59) | -37.1 |
| Eastern Europe | 2.4 (2.1-2.8) | 92.8 105.8) | (81.3- 4.3 (3.4-5.1) | 153.6 187.1) | (124.3- 1.58 (0.38-2.8) | 79.2 |
| Eastern Sub-Saharan Africa | 4.7 (3.4-6.4) | 475.5 631.2) | (353.5- 6.8 (5.4-8.5) | 295 367.3) | (237.5- -1.67 (-1.95--1.4) | 44.7 |
| High-income Asia Pacific | 5.7 (5.2-6.3) | 278.8 305) | (253.4- 4.8 (4.2-5.4) | 150.6 168.9) | (133- -2.24 (-2.52--1.96) | -15.8 |
| High-income America | North 0.8 (0.7-0.9) | 26.5 (23.5-29.8) | 1.3 (1.2-1.6) | 25.6 (22.2-29.7) | 0.19 (0.1-0.28) | 62.5 |
| North Africa and Middle East | 10.3 (8-13.5) | 506.7 (400-649) | 10.3 (7.7-13.6) | 212.6 278.9) | (158.5- -3.28 (-3.42--3.13) | 0.0 |
| Oceania | 0.1 (0.1-0.2) | 333.4 423.7) | (262.8- 0.2 (0.2-0.3) | 215.4 279.5) | (164.3- -1.49 (-1.55--1.43) | 100.0 |
| South Asia | 33.9 (26.9-45.3) | 413.5 505.1) | (345.4- 50.4 (41.9-60.6) | 304 365.4) | (252.7- -0.76 (-0.98--0.54) | 48.7 |
| Southeast Asia | 18.1 (15.6-21.1) | 541.7 624.9) | (469.6- 20.8 (17.3-25) | 299.4 356.4) | (251- -2.31 (-2.46--2.16) | 14.9 |
| Southern Latin America | 0.6 (0.4-0.7) | 120.3 159.6) | (88.6- 0.5 (0.3-0.6) | 58.8 (44-77.7) | -2.42 (-2.67--2.17) | -16.7 |

| | | | | | | | |
|------------------------|-------------|---------------|----------------------|------------------|---------------------|---------------------|-------|
| Southern Africa | Sub-Saharan | 1.2 (0.9-1.6) | 330.4 (249.8-431.5) | 1.3 (1.1-1.5) | 181.4 (153.6-214.8) | -2.37 (-2.81--1.93) | 8.3 |
| Tropical Latin America | | 2.2 (2-2.5) | 191.2 (172.7-212.1) | 1.8 (1.6-2.1) | 72.8 (65-82.1) | -3.84 (-4.24--3.44) | -18.2 |
| Western Europe | | 3.4 (2.8-4.1) | 69.3 (56.6-85.1) | 2.5 (2.1-3) | 36.6 (30.4-44.1) | -2.56 (-2.71--2.41) | -26.5 |
| Western Africa | Sub-Saharan | 10.6 (7.8-14) | 910.9 (682.4-1191.3) | 15.1 (11.5-19.5) | 572.9 (443.5-731.9) | -1.56 (-1.74--1.39) | 42.5 |

Table S4 Country-wise ASIR, ASMR and ASDR of hepatitis B in 2019

| location | ASIR | upper | lower | ASMR | upper | lower | ASDR | upper | lower |
|----------------|--------|--------|--------|------|-------|-------|-------|-------|-------|
| Afghanistan | 1706.3 | 2294.4 | 1253.2 | 15.2 | 21.6 | 10.3 | 436.9 | 637.6 | 291 |
| Albania | 173.1 | 212.7 | 141.2 | 3 | 4.2 | 2.1 | 83.6 | 117.3 | 57.9 |
| Algeria | 563.7 | 749.4 | 405 | 3.6 | 4.9 | 2.6 | 87.6 | 120.2 | 63.1 |
| American Samoa | 1769.9 | 2231.8 | 1328.1 | 9.5 | 11.8 | 7.7 | 294.9 | 380.5 | 233.1 |
| Andorra | 152.5 | 208.7 | 105.4 | 2.1 | 2.8 | 1.4 | 59.6 | 82.6 | 41.4 |
| Angola | 3044.7 | 3860.3 | 2307.6 | 13.3 | 18 | 9.4 | 395.2 | 538.1 | 280.5 |
| Argentina | 137.5 | 164.2 | 112.5 | 1.9 | 2.6 | 1.4 | 54.8 | 72.7 | 41 |
| Armenia | 517.4 | 666.2 | 388.7 | 5.8 | 7.7 | 4.3 | 149.3 | 197.9 | 112.3 |
| Australia | 614.1 | 743.6 | 495.1 | 1.4 | 1.8 | 1.1 | 45.1 | 56.4 | 35.7 |
| Austria | 146.3 | 199.5 | 100.8 | 1.1 | 1.4 | 0.8 | 31.1 | 41 | 23.2 |
| Azerbaijan | 927 | 1140.5 | 716.2 | 8 | 11.2 | 5.7 | 203.9 | 272.2 | 150.3 |
| Bahamas | 151.8 | 191.7 | 117.8 | 1.9 | 2.6 | 1.4 | 62.1 | 83.7 | 44.4 |
| Bahrain | 633.5 | 813.6 | 489.8 | 4.6 | 6.1 | 3.3 | 101.7 | 137.1 | 75.8 |
| Bangladesh | 879.6 | 1045.7 | 730.9 | 6.6 | 9.2 | 4.7 | 192.1 | 269.2 | 134.5 |
| Barbados | 106.1 | 134.8 | 79.8 | 1.3 | 1.7 | 1 | 38.1 | 50 | 28.4 |

| | | | | | | | | | |
|--------------------------|--------|--------|--------|------|------|------|-------|--------|-------|
| Barbuda | 124.3 | 156.1 | 96.3 | 1.5 | 1.9 | 1.1 | 42.2 | 54.4 | 32.5 |
| Barbuda | 124.3 | 156.1 | 96.3 | 1.5 | 1.9 | 1.1 | 42.2 | 54.4 | 32.5 |
| Belarus | 94.7 | 129.6 | 65 | 2.5 | 3.6 | 1.7 | 92.1 | 130.4 | 61.6 |
| Belgium | 136.2 | 172.3 | 103.1 | 0.9 | 1.2 | 0.7 | 26.4 | 33.7 | 20.7 |
| Belize | 176.4 | 220.5 | 136.8 | 2.4 | 3.2 | 1.8 | 75.3 | 99.1 | 56.7 |
| Benin | 2070.6 | 2808.7 | 1468 | 17.8 | 23.6 | 12.8 | 532.8 | 719.8 | 372.2 |
| Bermuda | 167.6 | 203 | 136 | 1.2 | 1.6 | 0.9 | 34.9 | 46 | 25.8 |
| Bhutan | 875.3 | 1034.2 | 726.9 | 8.8 | 15.8 | 5.5 | 265.1 | 476.8 | 166.5 |
| Bolivia | 281 | 340.6 | 235.7 | 4.5 | 6.1 | 3.2 | 115.3 | 158.7 | 81.2 |
| Bosnia and Herzegovina | 191.9 | 230.4 | 160 | 3.7 | 4.9 | 2.6 | 103.2 | 139.6 | 74.3 |
| Botswana | 789.3 | 1106.9 | 507.6 | 5.4 | 8 | 3.6 | 175.5 | 263.9 | 110.9 |
| Brazil | 826 | 1050.5 | 625.3 | 2.2 | 2.5 | 2 | 73.1 | 82.2 | 65.3 |
| Brunei | 445.3 | 604.6 | 315.1 | 8.6 | 10.5 | 7 | 258.2 | 316.6 | 209.6 |
| Bulgaria | 419.4 | 521.9 | 334.2 | 5.4 | 7.4 | 3.8 | 180.7 | 252 | 127.7 |
| Burkina Faso | 3430.3 | 4419.2 | 2510.4 | 14.1 | 20.4 | 8.3 | 392.9 | 568.6 | 230.7 |
| Burundi | 1009.5 | 1209.2 | 825.4 | 6.6 | 11.4 | 3.7 | 202.7 | 359.2 | 115.6 |
| Cambodia | 1815.3 | 2412.7 | 1267.8 | 19.1 | 25.1 | 14 | 593.6 | 803.6 | 432.4 |
| Cameroon | 1569.2 | 1875 | 1310.7 | 14.7 | 21.3 | 9.8 | 447.6 | 639.5 | 302.4 |
| Canada | 484.2 | 590.9 | 386.5 | 0.7 | 0.9 | 0.5 | 20.7 | 26.8 | 15.9 |
| Cape Verde | 1509.4 | 2027.3 | 1052.8 | 16.1 | 19.9 | 12.7 | 471.2 | 596.9 | 367.8 |
| Central African Republic | 3338.2 | 3935.4 | 2815.2 | 13.7 | 21.4 | 8.4 | 432.5 | 704.3 | 251.5 |
| Chad | 2813.7 | 3710.6 | 2044.6 | 27 | 35.7 | 20 | 803.4 | 1069.7 | 587.7 |
| Chile | 195.2 | 235 | 165 | 2.5 | 3.3 | 1.9 | 72.2 | 95.7 | 53.7 |
| China | 1397.3 | 1775.2 | 1031.3 | 8.1 | 9.7 | 6.7 | 247.7 | 298.2 | 202.1 |
| Colombia | 507.8 | 722.9 | 337.4 | 0.7 | 0.9 | 0.5 | 19.4 | 27 | 13.9 |

| | | | | | | | | | |
|----------------------------------|--------|--------|--------|------|------|------|--------|--------|-------|
| Comoros | 1202.5 | 1603.4 | 791.6 | 6.7 | 9.9 | 4.2 | 201.8 | 301.4 | 124.3 |
| Cook Islands | 799.8 | 1014 | 592.3 | 7.7 | 9.9 | 5.8 | 234.8 | 304.4 | 173.3 |
| Costa Rica | 192 | 255.3 | 134.2 | 1.3 | 1.8 | 0.9 | 39.5 | 54.1 | 28 |
| Croatia | 253.1 | 312 | 202 | 3.4 | 4.6 | 2.4 | 100.5 | 138.8 | 70.3 |
| Cuba | 70.3 | 94.4 | 49.9 | 1.3 | 1.8 | 1 | 38.4 | 53.6 | 27.7 |
| Cyprus | 183.9 | 218.8 | 152.7 | 0.9 | 1.1 | 0.7 | 22.3 | 28.8 | 17.3 |
| Czech Republic | 181.3 | 230.7 | 139.1 | 2.8 | 3.8 | 2 | 89.5 | 122.2 | 64.2 |
| Democratic Republic of the Congo | 1200.3 | 1537.3 | 858.3 | 10.3 | 14.9 | 6.9 | 325 | 464 | 216.6 |
| Denmark | 240.7 | 307.9 | 187.1 | 1.6 | 2.1 | 1.2 | 47.9 | 62.4 | 36 |
| Djibouti | 1365.3 | 1808.5 | 964.6 | 7.7 | 12.3 | 4.7 | 229.5 | 369 | 139.6 |
| Dominica | 165.8 | 211.7 | 127.4 | 1.7 | 2.2 | 1.2 | 50.3 | 66.7 | 36.7 |
| Dominican Republic | 210.4 | 253.5 | 164.6 | 3.8 | 5.4 | 2.5 | 111.4 | 161.7 | 72 |
| Ecuador | 252.3 | 293.3 | 215.2 | 3.1 | 4.2 | 2.2 | 78.6 | 109.2 | 55.9 |
| Egypt | 2191.1 | 2529.9 | 1925.1 | 36.6 | 53.5 | 22.6 | 754.5 | 1114.4 | 463.6 |
| El Salvador | 173.9 | 241.2 | 116.3 | 1.1 | 1.6 | 0.8 | 35.8 | 53.1 | 24.1 |
| Equatorial Guinea | 553.8 | 633 | 479.6 | 8.3 | 12.9 | 5.2 | 234.9 | 374.7 | 140.6 |
| Eritrea | 1390.2 | 1846.3 | 1006.6 | 9.2 | 13.5 | 5.9 | 287.5 | 429.7 | 183.7 |
| Estonia | 116.3 | 159.4 | 79 | 2.4 | 3.5 | 1.7 | 82.2 | 120.1 | 56.7 |
| Ethiopia | 977.8 | 1206.9 | 785.3 | 13.9 | 17.5 | 11.1 | 384.4 | 487 | 303 |
| Fiji | 967.1 | 1278.8 | 677.9 | 6.4 | 8.3 | 4.7 | 195.4 | 258.8 | 145.5 |
| Finland | 242.4 | 311.4 | 190.1 | 2 | 2.6 | 1.5 | 64.3 | 84.7 | 47.4 |
| France | 392.9 | 472.5 | 313.2 | 1.5 | 1.9 | 1.1 | 44.3 | 56.3 | 33.8 |
| Gabon | 1529 | 1908.4 | 1183.4 | 9.6 | 14.2 | 6.2 | 285.1 | 423.3 | 184.8 |
| Gambia | 1878.8 | 2150.5 | 1652.8 | 35.5 | 47.4 | 25.7 | 1072.7 | 1444.3 | 771.8 |

| | | | | | | | | | |
|---------------|--------|--------|--------|------|------|------|--------|--------|-------|
| Georgia | 417.6 | 477.3 | 359.1 | 7.1 | 9.5 | 5.2 | 243.1 | 332.4 | 177.2 |
| Germany | 101.3 | 126.8 | 80.1 | 1.2 | 1.6 | 0.9 | 35.2 | 46.5 | 26.6 |
| Ghana | 2825.3 | 3628.1 | 2105.4 | 17.4 | 23 | 12.8 | 508.7 | 673.1 | 370 |
| Greece | 451.6 | 557.4 | 357.2 | 1.7 | 2.1 | 1.4 | 45.1 | 53.6 | 37.5 |
| Greenland | 386.6 | 508.8 | 291.8 | 1.5 | 2.1 | 1.1 | 48.9 | 68.6 | 34.3 |
| Grenada | 168 | 207.3 | 130.9 | 1.8 | 2.4 | 1.4 | 55.5 | 71.8 | 43.1 |
| Grenadines | 144 | 179.6 | 110.2 | 1.8 | 2.3 | 1.3 | 55 | 72.2 | 42.1 |
| Grenadines | 144 | 179.6 | 110.2 | 1.8 | 2.3 | 1.3 | 55 | 72.2 | 42.1 |
| Guam | 1777.1 | 2139.3 | 1455.3 | 10.7 | 13.3 | 8.7 | 343.6 | 429.4 | 276 |
| Guatemala | 425.6 | 535 | 316.4 | 2.3 | 3.2 | 1.6 | 76.5 | 108.6 | 53.5 |
| Guinea | 3278.4 | 4326.3 | 2445.8 | 37 | 49.4 | 27.4 | 1092.1 | 1454.1 | 802.2 |
| Guinea-Bissau | 2944 | 3818.8 | 2153 | 27.7 | 37.9 | 20 | 845.1 | 1157.9 | 604.3 |
| Guyana | 243.5 | 298.6 | 193.6 | 3.5 | 5 | 2.4 | 116.6 | 167.7 | 78.8 |
| Haiti | 414.1 | 536.9 | 293.8 | 4.7 | 7 | 2.7 | 145 | 218 | 82.3 |
| Honduras | 383.3 | 502.8 | 279.1 | 4 | 5.9 | 2.4 | 108.9 | 164.4 | 66.1 |
| Hungary | 364.5 | 416.2 | 320.3 | 6.8 | 8.9 | 5 | 214.5 | 282.1 | 158.6 |
| Iceland | 165 | 212.4 | 122.7 | 0.9 | 1.2 | 0.7 | 26.7 | 34.2 | 20.7 |
| India | 792.7 | 968 | 623.9 | 9.1 | 11 | 7.4 | 309.2 | 378.5 | 248 |
| Indonesia | 1091.4 | 1329.3 | 875.2 | 10.5 | 12.6 | 8.6 | 287.2 | 352.3 | 235.8 |
| Iran | 356.1 | 449.1 | 268.9 | 3.4 | 3.8 | 3 | 86.5 | 96 | 78 |
| Iraq | 467.4 | 619 | 322.1 | 4.5 | 5.9 | 3.3 | 123.1 | 165 | 89.4 |
| Ireland | 138.3 | 183.9 | 96.3 | 0.9 | 1.1 | 0.7 | 25.3 | 32 | 19.6 |
| Israel | 122.5 | 166.9 | 82.4 | 0.8 | 1.1 | 0.6 | 21.9 | 27.6 | 17.2 |
| Italy | 90.2 | 121 | 62.8 | 1.3 | 1.5 | 1.2 | 36.2 | 40.3 | 32.6 |
| Ivory Coast | 2586.2 | 3047.5 | 2173.4 | 17.2 | 24.1 | 11.8 | 509.6 | 707.3 | 349.1 |

| | | | | | | | | | |
|------------------|--------|--------|--------|------|------|------|-------|-------|-------|
| Jamaica | 77.7 | 98.4 | 58.6 | 1.1 | 1.5 | 0.8 | 33 | 44.8 | 23.9 |
| Japan | 812.7 | 988 | 645.7 | 2.4 | 2.7 | 2.1 | 63.5 | 71 | 56.9 |
| Jordan | 818.2 | 1027.2 | 638 | 2.6 | 3.5 | 1.9 | 64.2 | 83.3 | 47.8 |
| Kazakhstan | 488.4 | 651.4 | 354.1 | 7.3 | 9.7 | 5.4 | 231.8 | 315.3 | 170 |
| Kenya | 1166 | 1439.8 | 936.1 | 12.2 | 17.7 | 8.9 | 358.2 | 511.1 | 257.6 |
| Kiribati | 2089 | 2743.2 | 1517.7 | 19.3 | 28.1 | 12.6 | 656.1 | 973.9 | 408.7 |
| Kuwait | 180.4 | 257.2 | 118.5 | 2 | 2.7 | 1.5 | 49.4 | 65 | 36.7 |
| Kyrgyzstan | 630 | 829.5 | 454.7 | 7.5 | 10.1 | 5.5 | 259.8 | 354.9 | 186.4 |
| Laos | 1939.1 | 2607.5 | 1398.5 | 10.5 | 14.5 | 7.4 | 323.9 | 447.4 | 226.6 |
| Latvia | 73.6 | 108.4 | 49 | 2.2 | 3.1 | 1.6 | 78.6 | 111.6 | 54.8 |
| Lebanon | 833.2 | 1048.5 | 644.2 | 6.1 | 9.2 | 4.3 | 137.3 | 196.1 | 98.2 |
| Lesotho | 1404.8 | 1996 | 897.7 | 11.8 | 17.6 | 6.6 | 377 | 583.9 | 202.8 |
| Liberia | 2517.6 | 3320.9 | 1780.7 | 21.9 | 30.5 | 15.7 | 628.4 | 889.2 | 441 |
| Libya | 536 | 671.7 | 418.1 | 4.8 | 6.5 | 3.4 | 128.4 | 176 | 93.8 |
| Lithuania | 108.7 | 147.2 | 72.8 | 3.1 | 4.4 | 2.2 | 113.5 | 163.7 | 79.3 |
| Luxembourg | 163 | 213.6 | 117.2 | 1 | 1.3 | 0.8 | 29.8 | 38.6 | 22.1 |
| Madagascar | 1365.4 | 1771 | 953.7 | 7.2 | 10.4 | 4.9 | 223.6 | 326.9 | 151.4 |
| Malawi | 1970.6 | 2737.4 | 1268.5 | 8.4 | 11.6 | 5.8 | 256.7 | 357.3 | 173.6 |
| Malaysia | 548.4 | 637.3 | 465.9 | 11.1 | 14.3 | 8.6 | 298.7 | 385.5 | 229.4 |
| Maldives | 579.5 | 801.9 | 391.4 | 4.4 | 5.6 | 3.4 | 116.9 | 148 | 91.3 |
| Mali | 1557.4 | 1963 | 1157.8 | 22.3 | 29.5 | 16.3 | 675.2 | 911.4 | 482.4 |
| Malta | 101.3 | 135.9 | 72.1 | 0.7 | 0.9 | 0.5 | 20.1 | 26.1 | 15.5 |
| Marshall Islands | 1486 | 1893.7 | 1177.1 | 13.6 | 19.3 | 9 | 435.5 | 627.8 | 282 |
| Mauritania | 4172.7 | 4788.9 | 3622.3 | 15.3 | 21 | 10.5 | 430.2 | 627 | 278.9 |
| Mauritius | 640.6 | 825.5 | 481.3 | 4.4 | 5.9 | 3.3 | 145.3 | 197.2 | 103.3 |

| | | | | | | | | | |
|--------------------------|--------|--------|--------|------|------|------|--------|--------|-------|
| Mexico | 76.8 | 89.5 | 65.6 | 1.7 | 2.1 | 1.4 | 54.4 | 67 | 43.7 |
| Micronesia | 1248.5 | 1550.7 | 983.7 | 13.6 | 20.8 | 8.2 | 433 | 694.2 | 246 |
| Moldova | 337.4 | 413.3 | 272.1 | 6.8 | 9.3 | 4.8 | 217.4 | 302.7 | 155 |
| Monaco | 106.7 | 148.2 | 69.8 | 1.6 | 2.2 | 1.1 | 47.8 | 65.6 | 33.1 |
| Mongolia | 1698.1 | 2008.5 | 1453.8 | 39.7 | 54.2 | 28.2 | 1089.5 | 1501.5 | 772.7 |
| Montenegro | 157.5 | 195.8 | 121.9 | 2.3 | 3 | 1.7 | 70.7 | 93.1 | 52.3 |
| Morocco | 420.4 | 500.5 | 346.7 | 4.4 | 5.8 | 3.2 | 106.1 | 142.5 | 75.2 |
| Mozambique | 2032.5 | 2818.3 | 1365.5 | 5.8 | 8.5 | 3.7 | 174.9 | 256.7 | 110 |
| Myanmar | 623.1 | 791.8 | 467 | 12.5 | 17.2 | 9 | 459.5 | 649.7 | 318.6 |
| Namibia | 1433.1 | 1648.9 | 1251.3 | 5.3 | 7.6 | 3.6 | 164.7 | 240.2 | 108.4 |
| Nauru | 1725.3 | 2197.3 | 1327.5 | 12.8 | 19.2 | 8.1 | 411.5 | 630.4 | 248.5 |
| Nepal | 508.7 | 590.3 | 429.6 | 9.1 | 13.5 | 6 | 263.6 | 388 | 172.2 |
| Netherlands | 192.6 | 252.4 | 137 | 0.9 | 1.1 | 0.7 | 23.8 | 29.6 | 18.9 |
| Nevis | 182.5 | 228.1 | 147.7 | 2.2 | 3 | 1.6 | 64.3 | 90.1 | 43.5 |
| Nevis | 182.5 | 228.1 | 147.7 | 2.2 | 3 | 1.6 | 64.3 | 90.1 | 43.5 |
| New Zealand | 171.5 | 220.7 | 123 | 1.3 | 1.4 | 1.1 | 37.6 | 42.1 | 33.3 |
| Nicaragua | 272.7 | 325.7 | 227.1 | 1.6 | 2.2 | 1.2 | 46.6 | 63.8 | 33.2 |
| Niger | 3456.9 | 4113.6 | 2894.8 | 18.8 | 27.4 | 12.1 | 557.7 | 830.4 | 352 |
| Nigeria | 2568.7 | 3181.7 | 2038.6 | 21.1 | 30.4 | 14.7 | 588.2 | 863.2 | 393.1 |
| Niue | 880 | 1136.6 | 661.3 | 8.8 | 11.4 | 6.4 | 268.7 | 365.1 | 190.4 |
| North Korea | 2165.4 | 2891.7 | 1525.3 | 11.4 | 14.9 | 8.3 | 364.5 | 490.4 | 260.5 |
| North Macedonia | 242 | 293.9 | 194.8 | 3.9 | 5.3 | 2.8 | 111.2 | 151 | 79.2 |
| Northern Mariana Islands | 2436.5 | 2947.1 | 1982 | 15 | 18.3 | 12.1 | 442.9 | 558.6 | 348.6 |
| Norway | 92.4 | 126 | 61.5 | 0.6 | 0.7 | 0.5 | 17.3 | 19.7 | 15 |
| Oman | 898.4 | 1153 | 671.8 | 4.4 | 5.8 | 3.3 | 110.1 | 149.3 | 79.6 |

| | | | | | | | | | |
|-----------------------|--------|--------|--------|------|------|------|-------|-------|-------|
| Pakistan | 886.6 | 1073.6 | 725.2 | 12.8 | 17.5 | 9.3 | 394 | 522.2 | 290.3 |
| Palau | 993.3 | 1264.1 | 716.2 | 11.8 | 16.3 | 8.4 | 390.6 | 544.5 | 267.8 |
| Palestine | 475.9 | 661.2 | 343.6 | 5.2 | 6.7 | 4 | 125.6 | 159.6 | 97.3 |
| Panama | 130.7 | 172.9 | 89.9 | 0.8 | 1.1 | 0.6 | 24.1 | 33.7 | 17.2 |
| Papua New Guinea | 1982.5 | 2461.9 | 1506.8 | 4.6 | 6.5 | 3.3 | 161.1 | 225.2 | 111.6 |
| Paraguay | 887.6 | 1182.8 | 572.9 | 2 | 2.9 | 1.4 | 62.7 | 89.6 | 42.5 |
| Peru | 252.8 | 293.7 | 218.2 | 2.6 | 3.7 | 1.8 | 72.8 | 104.4 | 50 |
| Philippines | 1702.4 | 2251.2 | 1215.4 | 7 | 8.7 | 5.6 | 222.4 | 280.8 | 174.8 |
| Poland | 100.7 | 127.2 | 77.9 | 3 | 3.7 | 2.3 | 100 | 126.7 | 77.8 |
| Portugal | 157.6 | 217.9 | 106.3 | 1.3 | 1.7 | 1 | 40.7 | 52.6 | 31.4 |
| Puerto Rico | 94.5 | 118.4 | 73.9 | 1.7 | 2.4 | 1.2 | 51.1 | 72.2 | 35.4 |
| Qatar | 624 | 758.1 | 518.2 | 9.8 | 14.1 | 6.7 | 189 | 269.4 | 130.1 |
| Republic of Congo | 1595.4 | 2158.2 | 1109.4 | 10.3 | 14.4 | 6.8 | 305 | 433.8 | 194.6 |
| Romania | 247.5 | 306.6 | 197.3 | 6.2 | 8.6 | 4.3 | 192.8 | 274.3 | 134.1 |
| Russia | 120.9 | 159.2 | 88.3 | 3.4 | 4.2 | 2.8 | 129 | 159 | 101.7 |
| Rwanda | 864.4 | 1209 | 540.6 | 4.8 | 6.8 | 3.3 | 151.5 | 213 | 103.9 |
| Saint Lucia | 168.4 | 210 | 134.8 | 1.6 | 2.1 | 1.2 | 47.1 | 63.4 | 35.1 |
| Samoa | 1754.1 | 2151.1 | 1383 | 10.2 | 13.4 | 7.7 | 319.1 | 432.4 | 229.5 |
| San Marino | 164.1 | 207.7 | 122.5 | 1.3 | 2 | 0.8 | 35.8 | 56.2 | 21.5 |
| Sao Tome and Principe | 2073.3 | 2727.9 | 1504.8 | 20.1 | 27.6 | 13.8 | 572.9 | 792.1 | 395.2 |
| Saudi Arabia | 852.6 | 1084.6 | 640.3 | 4.9 | 6.7 | 3.5 | 110.3 | 146.1 | 80.7 |
| Senegal | 1909.1 | 2523.8 | 1379.1 | 14.6 | 20.4 | 9.9 | 426.5 | 606.7 | 284.5 |
| Serbia | 178.5 | 228.3 | 135.7 | 2.8 | 3.8 | 2 | 82.7 | 112.8 | 58.8 |
| Seychelles | 858.9 | 1105.7 | 643.6 | 9.6 | 12.1 | 7.5 | 305.5 | 387.5 | 232.1 |
| Sierra Leone | 2042 | 2886.9 | 1450.6 | 16.1 | 22.1 | 11.4 | 494 | 679.6 | 347.3 |

| | | | | | | | | | |
|-----------------|--------|--------|--------|------|------|------|-------|-------|-------|
| Singapore | 664.9 | 814.9 | 533.3 | 6.5 | 7.6 | 5.4 | 153.4 | 176 | 131.6 |
| Slovakia | 202.2 | 256.2 | 150.3 | 4.3 | 6 | 2.9 | 140.6 | 202.4 | 96.8 |
| Slovenia | 235.8 | 294 | 186.4 | 3.9 | 5.6 | 2.7 | 114.4 | 163.3 | 78.7 |
| Solomon Islands | 1536.1 | 2170.2 | 1031.8 | 13.9 | 18.2 | 10.3 | 503.7 | 672.4 | 370.9 |
| Somalia | 3844.6 | 4567.3 | 3180.3 | 19.5 | 31.3 | 12.5 | 598 | 980.9 | 379.4 |
| South Africa | 368.2 | 515.3 | 257.8 | 4.5 | 5.1 | 4 | 146 | 166.2 | 127.1 |
| South Korea | 729.6 | 864.4 | 624.4 | 13.1 | 15.2 | 11.1 | 359.1 | 409.7 | 307.7 |
| South Sudan | 1712.4 | 2231.2 | 1233.4 | 12.6 | 19.4 | 7.9 | 359.9 | 575.3 | 217.8 |
| Spain | 153.9 | 196.9 | 116.4 | 1.1 | 1.4 | 0.9 | 30.7 | 38.2 | 24.5 |
| Sri Lanka | 482.6 | 578.9 | 398.8 | 5.1 | 7.1 | 3.6 | 153.7 | 220 | 106 |
| Sudan | 1179.8 | 1471.9 | 886.3 | 8.9 | 15.1 | 5.1 | 236.4 | 405.7 | 133.5 |
| Suriname | 165.5 | 207 | 126.6 | 2.1 | 2.8 | 1.6 | 65.2 | 86.7 | 47.6 |
| Swaziland | 1105.5 | 1514.9 | 725.1 | 13 | 20.9 | 6.2 | 426.5 | 711.1 | 192.2 |
| Sweden | 118.6 | 155.7 | 86.3 | 0.7 | 0.8 | 0.6 | 19.3 | 22.6 | 16.6 |
| Switzerland | 206.6 | 263.6 | 157.9 | 1.3 | 1.7 | 1 | 36.9 | 46.7 | 29.1 |
| Syria | 883.5 | 1050.5 | 727.4 | 4.9 | 6.9 | 3.4 | 117.2 | 165.7 | 80.9 |
| Taiwan | 1794.8 | 2144.7 | 1513.2 | 9.8 | 13 | 7.2 | 295.7 | 393.7 | 217.1 |
| Tajikistan | 658.2 | 860.3 | 466.6 | 7.4 | 10.1 | 5.3 | 233.3 | 317.8 | 167.1 |
| Tanzania | 1648.9 | 1983.5 | 1359.7 | 5.7 | 8 | 3.6 | 173.2 | 249.7 | 112.4 |
| Thailand | 1121.2 | 1376.8 | 902.4 | 13 | 17.8 | 9.1 | 406.3 | 552 | 288 |
| Timor-Leste | 1057 | 1415.8 | 764.4 | 9.8 | 14.6 | 5.7 | 287.6 | 425.3 | 149.8 |
| Tobago | 139.5 | 175.9 | 111.6 | 1.4 | 2 | 1 | 44.5 | 63.9 | 29.9 |
| Tobago | 139.5 | 175.9 | 111.6 | 1.4 | 2 | 1 | 44.5 | 63.9 | 29.9 |
| Togo | 1479.2 | 1789.4 | 1196.9 | 16.9 | 22.9 | 12.2 | 504.5 | 682.9 | 359.5 |
| Tokelau | 2147.7 | 2676.8 | 1630.1 | 10.6 | 14.1 | 7.8 | 324.8 | 449.7 | 228.3 |

| | | | | | | | | | |
|----------------------|--------|--------|--------|------|------|------|-------|-------|-------|
| Tonga | 1381.5 | 1738 | 1068.2 | 22.3 | 29 | 16.8 | 703.3 | 930.4 | 525.7 |
| Tunisia | 452.6 | 591 | 327.2 | 1.7 | 2.5 | 1.1 | 45.9 | 67.4 | 30.9 |
| Turkey | 607.5 | 742.9 | 491.9 | 4.1 | 5.4 | 3 | 98.6 | 128.1 | 74.9 |
| Turkmenistan | 631.5 | 843 | 469.4 | 10.7 | 14.8 | 7.7 | 398.4 | 543.5 | 286.4 |
| Tuvalu | 1792.8 | 2299 | 1379.4 | 12.2 | 17 | 8.4 | 390.7 | 554.8 | 265.2 |
| Uganda | 1673.6 | 2052 | 1292.1 | 7.1 | 9.9 | 4.9 | 219.9 | 304.8 | 150.6 |
| UK | 181.1 | 226.4 | 139.9 | 1.4 | 1.6 | 1.2 | 42.8 | 49.1 | 37.1 |
| Ukraine | 210 | 276.4 | 152.1 | 6.2 | 7.8 | 4.8 | 248.6 | 318 | 192.1 |
| United Arab Emirates | 326.2 | 425.9 | 238.5 | 4.7 | 7.3 | 2.9 | 125.8 | 198.6 | 78.3 |
| Uruguay | 89.6 | 110.3 | 70.9 | 1.3 | 1.7 | 1 | 35.3 | 45.7 | 27 |
| USA | 59.9 | 77.8 | 43.2 | 0.9 | 1 | 0.8 | 26.2 | 30.2 | 22.8 |
| Uzbekistan | 1143.4 | 1517.6 | 844.8 | 10.2 | 13.5 | 7.6 | 332.2 | 441.3 | 247.2 |
| Vanuatu | 1659.5 | 2092.6 | 1227.1 | 14.1 | 19.3 | 9.5 | 454.2 | 645.6 | 298.8 |
| Venezuela | 186.9 | 246.8 | 126.7 | 0.9 | 1.4 | 0.6 | 28.1 | 40.2 | 19.3 |
| Vietnam | 1772.5 | 2184.5 | 1436.6 | 7.9 | 10.8 | 5.7 | 226.5 | 311.8 | 161.7 |
| Virgin Islands | 121.5 | 148.4 | 98.3 | 2.1 | 2.7 | 1.5 | 60.9 | 82.8 | 43.9 |
| Yemen | 2078.2 | 2507.6 | 1699.7 | 7.1 | 10.7 | 4.5 | 190.1 | 284.2 | 123.6 |
| Zambia | 1987 | 2669.5 | 1419 | 10.5 | 14.7 | 7.4 | 324.1 | 461.6 | 223.8 |
| Zimbabwe | 2380.5 | 2980.6 | 1857.5 | 10.5 | 14.4 | 7.4 | 333.5 | 464.3 | 226.3 |

Table S5 Country-wise incidence, deaths and DALYs change of hepatitis B from 1990 to 2019

| location | incidence- case_19 90 | incidence- case_20 19 | incidence changes number | incidence changes percent | deaths- case_19 90 | deaths- case_20 19 | deaths changes number | deaths changes percent | DALYs - case_19 90 | DALYs - case_20 19 | DALYs changes number | DALYs changes percent |
|----------|-----------------------------|-----------------------------|--------------------------------|---------------------------------|--------------------------|--------------------------|-----------------------------|------------------------------|-----------------------------|-----------------------------|----------------------------|-----------------------------|
|----------|-----------------------------|-----------------------------|--------------------------------|---------------------------------|--------------------------|--------------------------|-----------------------------|------------------------------|-----------------------------|-----------------------------|----------------------------|-----------------------------|

| | | | | | | | | | | | | |
|------------------------|---------------|---------------|-------------------|--------|---------|---------|---------|--------|--------------|--------------|--------------|--------|
| Afghanistan | 242087. 29 | 611947. 28 | 369859. 99 | 152.78 | 2086.28 | 2245.11 | 158.83 | 7.61 | 71380.0 | 85644.3 | 14264.3 | 19.98 |
| Albania | 11217.8 0 | 5590.73 | - 5627.07 | -50.16 | 159.95 | 123.37 | -36.58 | -22.87 | 4768.54 | 3191.87 | - | -33.06 |
| Algeria | 228352. 14 | 248668. 92 | 20316.7 8 | 8.90 | 1066.82 | 1131.81 | 64.99 | 6.09 | 36082.6 0 | 32658.6 7 | - 3423.93 | -9.49 |
| American Samoa | 978.97 | 976.91 | -2.06 | -0.21 | 2.65 | 4.71 | 2.06 | 77.63 | 97.25 | 155.49 | 58.24 | 59.88 |
| Andorra | 173.66 | 156.47 | -17.19 | -9.90 | 1.74 | 2.79 | 1.06 | 60.93 | 55.13 | 76.33 | 21.20 | 38.45 |
| Angola | 423586. 07 | 854715. 20 | 431129. 13 | 101.78 | 1161.79 | 1737.37 | 575.58 | 49.54 | 43756.6 9 | 64898.6 7 | 21141.9 8 | 48.32 |
| Antigua and Barbuda | 131.86 | 125.92 | -5.95 | -4.51 | 2.46 | 1.55 | -0.91 | -36.87 | 71.76 | 45.30 | -26.46 | -36.87 |
| Argentina | 58240.6 5 | 66050.3 3 | 7809.68 | 13.41 | 1018.86 | 1011.65 | -7.21 | -0.71 | 31033.0 0 | 27776.8 7 | - 3256.13 | -10.49 |
| Armenia | 29297.6 5 | 17602.9 3 | - 11694.7 2 | -39.92 | 120.64 | 231.77 | 111.13 | 92.12 | 3808.63 | 5807.11 | 1998.48 | 52.47 |
| Australia | 174184. 14 | 175555. 68 | 1371.54 | 0.79 | 333.21 | 537.45 | 204.24 | 61.29 | 10573.6 9 | 15176.1 0 | 4602.42 | 43.53 |
| Austria | 18616.2 5 | 13543.1 9 | - 5073.06 | -27.25 | 272.99 | 166.89 | -106.10 | -38.87 | 8336.68 | 4375.61 | - 3961.07 | -47.51 |
| Azerbaijan | 85911.4 5 | 104552. 40 | 18640.9 5 | 21.70 | 468.73 | 698.15 | 229.42 | 48.94 | 16131.7 4 | 21344.2 8 | 5212.54 | 32.31 |
| Bahamas | 584.49 | 633.26 | 48.76 | 8.34 | 9.26 | 8.11 | -1.15 | -12.38 | 324.22 | 271.79 | -52.43 | -16.17 |

| | | | | | | | | | | | | |
|--------------------------|---------|---------|---------|--------|---------|---------|---------|--------|---------|---------|---------|--------|
| Brunei Darussalam | 3111.78 | 2074.95 | - | -33.32 | 15.48 | 31.23 | 15.75 | 101.73 | 591.59 | 1119.13 | 527.54 | 89.17 |
| Bulgaria | 83344.2 | 35964.2 | - | -56.85 | 881.76 | 635.00 | -246.76 | -27.98 | 26927.3 | 19119.6 | - | -29.00 |
| | 3 | 5 | 47379.9 | | | | | | 7 | 1 | 7807.76 | |
| | | | 8 | | | | | | | | | |
| Burkina Faso | 340201. | 642652. | 302451. | 88.90 | 1299.96 | 1401.50 | 101.54 | 7.81 | 41779.2 | 50237.7 | 8458.57 | 20.25 |
| | 28 | 32 | 04 | | | | | | 0 | 7 | | |
| Burundi | 74413.7 | 93324.1 | 18910.4 | 25.41 | 361.52 | 358.35 | -3.17 | -0.88 | 12698.6 | 13428.4 | 729.79 | 5.75 |
| | 0 | 9 | 9 | | | | | | 3 | 2 | | |
| Cabo Verde | 7766.27 | 8983.43 | 1217.16 | 15.67 | 36.94 | 73.42 | 36.48 | 98.76 | 1240.34 | 2332.08 | 1091.73 | 88.02 |
| Cambodia | 293098. | 309204. | 16106.6 | 5.50 | 1868.09 | 2445.73 | 577.64 | 30.92 | 72142.1 | 85917.2 | 13775.0 | 19.09 |
| | 22 | 90 | 8 | | | | | | 5 | 2 | 7 | |
| Cameroon | 213770. | 385905. | 172134. | 80.52 | 1399.74 | 2091.73 | 692.00 | 49.44 | 51046.4 | 80220.2 | 29173.7 | 57.15 |
| | 95 | 41 | 46 | | | | | | 3 | 2 | 9 | |
| Canada | 168698. | 186964. | 18265.8 | 10.83 | 197.06 | 445.15 | 248.09 | 125.90 | 5882.08 | 11569.6 | 5687.61 | 96.69 |
| | 71 | 58 | 7 | | | | | | | 9 | | |
| Central African Republic | 112910. | 165749. | 52839.0 | 46.80 | 298.80 | 363.10 | 64.30 | 21.52 | 10946.0 | 13828.7 | 2882.75 | 26.34 |
| | 81 | 82 | 0 | | | | | | 4 | 9 | | |
| Chad | 186580. | 410978. | 224397. | 120.27 | 958.00 | 1793.18 | 835.18 | 87.18 | 33575.6 | 68979.9 | 35404.3 | 105.45 |
| | 50 | 41 | 91 | | | | | | 4 | 9 | 4 | |
| Chile | 31783.3 | 38986.8 | 7203.51 | 22.66 | 682.00 | 598.12 | -83.88 | -12.30 | 22618.5 | 16768.4 | - | -25.86 |
| | 0 | 1 | | | | | | | 7 | 2 | 5850.15 | |
| China | 334294 | 233557 | - | -30.13 | 228717. | 162084. | - | -29.13 | 803409 | 497905 | - | -38.03 |
| | 16.83 | 42.17 | 100736 | | 85 | 99 | 66632.8 | | 4.25 | 7.58 | 305503 | |
| | | | 74.66 | | | | 6 | | | | 6.67 | |

| | | | | | | | | | | | | |
|----------------------------------|-----------|-----------|------------|--------|---------|---------|---------|--------|-----------|-----------|-----------|--------|
| Colombia | 360112.08 | 254806.72 | -105305.36 | -29.24 | 230.96 | 355.43 | 124.46 | 53.89 | 8202.19 | 10136.51 | 1934.31 | 23.58 |
| Comoros | 8114.76 | 8489.42 | 374.66 | 4.62 | 25.05 | 34.88 | 9.83 | 39.24 | 832.95 | 1165.01 | 332.06 | 39.87 |
| Cook Islands | 320.22 | 157.77 | -162.44 | -50.73 | 1.68 | 1.84 | 0.16 | 9.74 | 54.40 | 54.36 | -0.04 | -0.08 |
| Costa Rica | 9462.61 | 9908.09 | 445.48 | 4.71 | 39.69 | 68.96 | 29.28 | 73.78 | 1420.15 | 2062.90 | 642.74 | 45.26 |
| Cote d'Ivoire | 464949.84 | 568496.46 | 103546.62 | 22.27 | 1481.70 | 2169.12 | 687.42 | 46.39 | 57545.13 | 81797.17 | 24252.04 | 42.14 |
| Croatia | 22597.58 | 12883.85 | -9713.72 | -42.99 | 610.55 | 262.62 | -347.94 | -56.99 | 19264.44 | 6989.08 | -12275.36 | -63.72 |
| Cuba | 16145.54 | 9539.64 | -6605.90 | -40.91 | 321.22 | 242.31 | -78.91 | -24.57 | 9289.61 | 6696.75 | -2592.86 | -27.91 |
| Cyprus | 3357.81 | 3083.39 | -274.42 | -8.17 | 14.90 | 16.13 | 1.23 | 8.23 | 396.29 | 402.31 | 6.03 | 1.52 |
| Czech Republic | 29614.21 | 20886.34 | -8727.87 | -29.47 | 793.24 | 505.51 | -287.74 | -36.27 | 25211.25 | 14614.93 | -10596.31 | -42.03 |
| Democratic Republic of the Congo | 539068.08 | 948213.60 | 409145.52 | 75.90 | 3439.25 | 4459.57 | 1020.32 | 29.67 | 124557.71 | 168516.71 | 43959.01 | 35.29 |
| Denmark | 12129.05 | 12059.95 | -69.10 | -0.57 | 112.58 | 155.90 | 43.33 | 38.49 | 3774.18 | 4194.00 | 419.82 | 11.12 |
| Djibouti | 8900.50 | 16656.43 | 7755.93 | 87.14 | 20.85 | 54.90 | 34.05 | 163.30 | 815.51 | 2030.06 | 1214.55 | 148.93 |
| Dominica | 166.03 | 120.98 | -45.05 | -27.13 | 3.18 | 1.46 | -1.72 | -54.07 | 91.33 | 42.03 | -49.30 | -53.98 |

| | | | | | | | | | | | | |
|--------------------|----------------|----------------|-------------------|--------|--------------|--------------|---------|--------|---------------|---------------|-------------------|--------|
| Dominican Republic | 21189.1 1 | 22997.6 8 | 1808.57 8 | 8.54 | 230.38 | 361.33 | 130.95 | 56.84 | 8153.76 | 11323.1 5 | 3169.39 | 38.87 |
| Ecuador | 29679.4 3 | 43463.9 1 | 13784.4 8 | 46.44 | 262.05 | 459.78 | 197.73 | 75.45 | 8748.84 | 12466.3 5 | 3717.51 | 42.49 |
| Egypt | 171501 4.13 | 191675 8.92 | 201744. 79 | 11.76 | 17552.2 1 | 19189.6 0 | 1637.40 | 9.33 | 467308. 33 | 501700. 20 | 34391.8 7 | 7.36 |
| El Salvador | 17783.5 0 | 10899.9 9 | - 6883.51 | -38.71 | 78.62 | 66.97 | -11.65 | -14.82 | 2898.68 | 2116.65 | -782.03 | -26.98 |
| Equatorial Guinea | 2545.85 | 7223.71 | 4677.86 | 183.74 | 37.89 | 46.70 | 8.80 | 23.23 | 1345.51 | 1707.06 | 361.55 | 26.87 |
| Eritrea | 67733.6 8 | 85408.3 3 | 17674.6 5 | 26.09 | 180.71 | 307.31 | 126.60 | 70.06 | 6940.15 | 11885.4 6 | 4945.32 | 71.26 |
| Estonia | 2992.36 | 1628.27 | - 1364.09 | -45.59 | 43.59 | 49.25 | 5.66 | 12.99 | 1458.29 | 1516.48 | 58.19 | 3.99 |
| Eswatini | 18092.4 8 | 11932.8 7 | - 6159.61 | -34.05 | 46.83 | 89.75 | 42.93 | 91.68 | 1706.23 | 3376.29 | 1670.07 | 97.88 |
| Ethiopia | 726071. 52 | 104069 3.97 | 314622. 45 | 43.33 | 4506.77 | 6347.82 | 1841.05 | 40.85 | 160017. 64 | 215942. 02 | 55924.3 8 | 34.95 |
| Fiji | 16007.4 5 | 8868.28 | - 7139.17 | -44.60 | 37.20 | 50.70 | 13.50 | 36.29 | 1407.98 | 1726.59 | 318.61 | 22.63 |
| Finland | 12256.1 5 | 11176.0 5 | - 1080.10 | -8.81 | 102.93 | 190.47 | 87.54 | 85.06 | 3427.49 | 5281.52 | 1854.04 | 54.09 |
| France | 339813. 80 | 270305. 78 | - 69508.0 3 | -20.45 | 2031.04 | 1750.26 | -280.78 | -13.82 | 58809.9 5 | 44447.2 1 | - 14362.7 4 | -24.42 |

| | | | | | | | | | | | | |
|---------------|---------------|---------------|---------------|--------|---------|---------|---------|--------|--------------|---------------|--------------|--------|
| Gabon | 22548.6 4 | 26033.1 2 | 3484.48 | 15.45 | 105.28 | 110.89 | 5.61 | 5.33 | 3543.29 | 3807.15 | 263.85 | 7.45 |
| Gambia | 27486.4 4 | 30145.3 4 | 2658.91 | 9.67 | 162.36 | 385.61 | 223.25 | 137.51 | 5757.91 | 13502.2 1 | 7744.30 | 134.50 |
| Georgia | 30361.1 2 | 16744.9 8 | - 13616.1 | -44.85 | 494.15 | 367.41 | -126.74 | -25.65 | 15435.8 7 | 11546.7 1 | - 3889.16 | -25.20 |
| Germany | 119854. 26 | 94636.0 9 | - 25218.1 | -21.04 | 2900.44 | 1980.73 | -919.71 | -31.71 | 87825.0 0 | 49355.5 3 | - 38469.4 | -43.80 |
| Ghana | 609929. 68 | 839861. 84 | 229932. 17 | 37.70 | 2339.24 | 3118.46 | 779.22 | 33.31 | 82476.9 5 | 109765. 08 | 27288.1 2 | 33.09 |
| Greece | 71277.2 3 | 50137.7 6 | - 21139.4 | -29.66 | 323.58 | 372.48 | 48.91 | 15.11 | 7600.36 | 8169.45 | 569.09 | 7.49 |
| Greenland | 249.22 | 208.96 | -40.26 | -16.15 | 0.61 | 1.12 | 0.51 | 82.47 | 23.97 | 36.42 | 12.45 | 51.91 |
| Grenada | 214.72 | 188.83 | -25.89 | -12.06 | 3.88 | 2.14 | -1.75 | -45.01 | 118.70 | 65.89 | -52.81 | -44.49 |
| Guam | 2916.13 | 3032.63 | 116.50 | 4.00 | 9.74 | 20.29 | 10.55 | 108.34 | 343.91 | 640.35 | 296.44 | 86.20 |
| Guatemala | 47161.6 9 | 76907.6 8 | 29745.9 9 | 63.07 | 213.25 | 286.27 | 73.02 | 34.24 | 8218.26 | 10395.8 2 | 2177.57 | 26.50 |
| Guinea | 227150. 21 | 368717. 14 | 141566. 93 | 62.32 | 1561.63 | 2266.92 | 705.30 | 45.16 | 52487.1 3 | 79485.6 9 | 26998.5 6 | 51.44 |
| Guinea-Bissau | 37019.9 9 | 52457.0 9 | 15437.1 0 | 41.70 | 194.60 | 240.95 | 46.35 | 23.82 | 7250.95 | 9168.81 | 1917.86 | 26.45 |
| Guyana | 2758.63 | 1933.32 | -825.31 | -29.92 | 37.23 | 24.49 | -12.74 | -34.22 | 1373.20 | 859.80 | -513.39 | -37.39 |

| | | | | | | | | | | | | |
|-----------|----------------|-----------------|--------------------|--------|--------------|---------------|--------------|--------|----------------|----------------|-------------------|--------|
| Haiti | 31384.0 7 | 52555.6 4 | 21171.5 8 | 67.46 | 260.18 | 374.15 | 113.97 | 43.81 | 9365.24 | 13133.9 5 | 3768.71 | 40.24 |
| Honduras | 27459.7 8 | 35884.9 4 | 8425.17 | 30.68 | 111.08 | 248.52 | 137.44 | 123.73 | 4001.64 | 7508.19 | 3506.55 | 87.63 |
| Hungary | 41379.9 2 | 37329.9 1 | - 4050.02 | -9.79 | 2006.09 | 1114.70 | -891.39 | -44.43 | 68990.0 9 | 32595.1 1 | - 36394.9 8 | -52.75 |
| Iceland | 447.44 | 518.83 | 71.39 | 15.96 | 2.59 | 4.55 | 1.96 | 75.72 | 76.99 | 124.08 | 47.09 | 61.17 |
| India | 935942 5.48 | 115152 50.27 | 215582 4.79 | 23.03 | 60291.3 6 | 110371. 76 | 50080.4 0 | 83.06 | 251254 8.11 | 408221 5.05 | 156966 6.94 | 62.47 |
| Indonesia | 297081 9.96 | 298300 8.02 | 12188.0 6 | 0.41 | 18305.6 4 | 22613.5 6 | 4307.92 | 23.53 | 698495. 83 | 726398. 35 | 27902.5 2 | 3.99 |
| Iran | 458471. 28 | 348898. 98 | - 109572. 30 | -23.90 | 1975.85 | 2470.86 | 495.01 | 25.05 | 66093.2 0 | 70179.9 8 | 4086.79 | 6.18 |
| Iraq | 154842. 92 | 194695. 51 | 39852.5 9 | 25.74 | 610.80 | 1093.91 | 483.11 | 79.09 | 20579.3 6 | 35067.9 2 | 14488.5 6 | 70.40 |
| Ireland | 7180.76 | 6710.72 | -470.05 | -6.55 | 28.77 | 61.47 | 32.70 | 113.64 | 819.79 | 1674.93 | 855.14 | 104.31 |
| Israel | 11687.7 1 | 11322.6 4 | -365.07 | -3.12 | 71.30 | 92.58 | 21.28 | 29.84 | 1923.57 | 2270.37 | 346.80 | 18.03 |
| Italy | 202747. 69 | 71860.8 4 | - 130886. 84 | -64.56 | 2854.26 | 1713.85 | - 1140.41 | -39.95 | 76004.8 8 | 38939.2 7 | - 37065.6 1 | -48.77 |
| Jamaica | 2848.43 | 2379.61 | -468.81 | -16.46 | 39.35 | 33.72 | -5.64 | -14.32 | 1164.05 | 985.71 | -178.34 | -15.32 |
| Japan | 131911 | 988653. | - | -25.05 | 6970.57 | 7654.91 | 684.34 | 9.82 | 202242. | 155087. | - | -23.32 |

| | | | | | | | | | | | | |
|------------|---------|---------|---------|--------|---------|---------|---------|--------|---------|---------|---------|--------|
| | 7.59 | 73 | 330463. | | | | | | 81 | 90 | 47154.9 | |
| | | | 86 | | | | | | | | 1 | |
| Jordan | 86131.9 | 90600.9 | 4469.04 | 5.19 | 99.67 | 165.64 | 65.96 | 66.18 | 3317.77 | 5050.94 | 1733.17 | 52.24 |
| | 4 | 8 | | | | | | | | | | |
| Kazakhstan | 145408. | 96227.1 | - | -33.82 | 772.23 | 1337.35 | 565.12 | 73.18 | 27364.2 | 45021.8 | 17657.5 | 64.53 |
| | 29 | 4 | 49181.1 | | | | | | 5 | 0 | 5 | |
| | | | 5 | | | | | | | | | |
| Kenya | 378554. | 538300. | 159745. | 42.20 | 1582.77 | 3091.59 | 1508.82 | 95.33 | 54004.3 | 110902. | 56897.7 | 105.36 |
| | 39 | 14 | 75 | | | | | | 9 | 08 | 0 | |
| Kiribati | 2292.93 | 2383.63 | 90.70 | 3.96 | 16.17 | 16.03 | -0.15 | -0.90 | 649.53 | 632.13 | -17.40 | -2.68 |
| Kuwait | 8041.08 | 10791.4 | 2750.39 | 34.20 | 27.40 | 55.92 | 28.52 | 104.09 | 1004.02 | 1746.54 | 742.52 | 73.95 |
| | | 7 | | | | | | | | | | |
| Kyrgyzstan | 43932.9 | 42040.3 | - | -4.31 | 325.18 | 404.17 | 78.99 | 24.29 | 12624.9 | 15155.2 | 2530.26 | 20.04 |
| | 9 | 9 | 1892.60 | | | | | | 9 | 5 | | |
| Laos | 108730. | 144467. | 35736.7 | 32.87 | 526.44 | 519.18 | -7.27 | -1.38 | 19632.9 | 18347.0 | - | -6.55 |
| | 33 | 03 | 0 | | | | | | 0 | 1 | 1285.89 | |
| Latvia | 3564.88 | 1568.79 | - | -55.99 | 87.34 | 67.05 | -20.29 | -23.24 | 3348.54 | 2098.95 | - | -37.32 |
| | | | 1996.09 | | | | | | | | 1249.59 | |
| Lebanon | 40889.7 | 45756.5 | 4866.82 | 11.90 | 259.53 | 311.59 | 52.07 | 20.06 | 6932.01 | 7187.99 | 255.98 | 3.69 |
| | 5 | 7 | | | | | | | | | | |
| Lesotho | 40987.9 | 30620.6 | - | -25.29 | 139.99 | 168.38 | 28.39 | 20.28 | 4809.48 | 6038.35 | 1228.87 | 25.55 |
| | 4 | 9 | 10367.2 | | | | | | | | | |
| | | | 4 | | | | | | | | | |
| Liberia | 59638.5 | 113622. | 53983.4 | 90.52 | 429.38 | 518.50 | 89.11 | 20.75 | 14276.4 | 18868.9 | 4592.47 | 32.17 |
| | 8 | 00 | 2 | | | | | | 9 | 6 | | |

| | | | | | | | | | | | | |
|---------------------|---------------|---------------|-------------------|--------|---------|---------|---------|--------|--------------|--------------|--------------|--------|
| Libya | 36129.2 4 | 40728.9 7 | 4599.73 | 12.73 | 202.28 | 257.09 | 54.81 | 27.10 | 6549.10 | 8002.62 | 1453.52 | 22.19 |
| Lithuania | 7456.72 | 3258.66 | - 4198.06 | -56.30 | 101.32 | 132.06 | 30.75 | 30.35 | 3492.11 | 4341.11 | 848.99 | 24.31 |
| Luxembourg | 993.01 | 1118.97 | 125.96 | 12.68 | 12.83 | 9.71 | -3.12 | -24.29 | 382.30 | 264.65 | -117.66 | -30.78 |
| Macedonia | 6873.50 | 6007.15 | -866.35 | -12.60 | 102.80 | 123.88 | 21.08 | 20.51 | 3197.63 | 3479.56 | 281.93 | 8.82 |
| Madagascar | 258590. 22 | 332536. 17 | 73945.9 5 | 28.60 | 834.22 | 960.24 | 126.02 | 15.11 | 30944.0 5 | 36767.6 4 | 5823.58 | 18.82 |
| Malawi | 268448. 09 | 310592. 71 | 42144.6 3 | 15.70 | 849.99 | 712.52 | -137.47 | -16.17 | 30672.6 1 | 26500.5 0 | - 4172.11 | -13.60 |
| Malaysia | 149821. 64 | 174285. 14 | 24463.5 0 | 16.33 | 1263.92 | 3000.83 | 1736.91 | 137.42 | 40935.9 5 | 88428.0 5 | 47492.0 9 | 116.02 |
| Maldives | 2360.67 | 3539.79 | 1179.12 | 49.95 | 11.97 | 15.10 | 3.13 | 26.15 | 430.84 | 505.03 | 74.19 | 17.22 |
| Mali | 148956. 31 | 278766. 51 | 129810. 20 | 87.15 | 1882.96 | 2206.75 | 323.79 | 17.20 | 69046.1 9 | 80968.7 7 | 11922.5 8 | 17.27 |
| Malta | 693.23 | 462.51 | -230.72 | -33.28 | 5.18 | 5.31 | 0.13 | 2.58 | 151.69 | 137.54 | -14.15 | -9.33 |
| Marshall Islands | 978.16 | 831.63 | -146.53 | -14.98 | 4.38 | 5.55 | 1.17 | 26.66 | 165.97 | 208.74 | 42.78 | 25.77 |
| Mauritania | 116138. 06 | 147124. 62 | 30986.5 6 | 26.68 | 361.99 | 334.54 | -27.46 | -7.58 | 11831.9 1 | 10958.3 3 | -873.58 | -7.38 |
| Mauritius | 13150.9 7 | 9132.87 | - 4018.10 | -30.55 | 106.64 | 76.08 | -30.56 | -28.66 | 3886.29 | 2455.44 | - 1430.85 | -36.82 |
| Mexico | 126977. 32 | 98854.2 4 | - 28123.0 8 | -22.15 | 1440.85 | 2125.36 | 684.51 | 47.51 | 54268.0 5 | 68854.0 5 | 14586.0 0 | 26.88 |

| | | | | | | | | | | | | |
|--------------------------|---------|---------|---------|--------|---------|---------|---------|--------|---------|---------|---------|--------|
| New Zealand | 12217.1 | 8517.41 | - | -30.28 | 52.16 | 88.18 | 36.02 | 69.07 | 1556.49 | 2371.18 | 814.70 | 52.34 |
| | 1 | | 3699.71 | | | | | | | | | |
| Nicaragua | 20564.3 | 16912.7 | - | -17.76 | 40.66 | 75.32 | 34.65 | 85.22 | 1581.78 | 2442.24 | 860.46 | 54.40 |
| | 3 | 3 | 3651.61 | | | | | | | | | |
| Niger | 314008. | 604232. | 290224. | 92.43 | 934.95 | 1688.15 | 753.20 | 80.56 | 36187.1 | 63667.2 | 27480.0 | 75.94 |
| | 25 | 57 | 32 | | | | | | 9 | 3 | 3 | |
| Nigeria | 322663 | 527375 | 204712 | 63.44 | 14457.6 | 20245.2 | 5787.62 | 40.03 | 495207. | 708162. | 212954. | 43.00 |
| | 3.88 | 8.03 | 4.15 | | 2 | 4 | | | 76 | 46 | 70 | |
| Niue | 43.67 | 16.42 | -27.25 | -62.41 | 0.31 | 0.19 | -0.12 | -40.11 | 9.54 | 5.52 | -4.02 | -42.11 |
| North Korea | 691708. | 641787. | - | -7.22 | 3389.95 | 3728.04 | 338.09 | 9.97 | 122503. | 121062. | - | -1.18 |
| | 06 | 45 | 49920.6 | | | | | | 17 | 67 | 1440.51 | |
| | | | 1 | | | | | | | | | |
| Northern Mariana Islands | 1285.36 | 1075.85 | -209.51 | -16.30 | 5.06 | 8.07 | 3.01 | 59.61 | 207.16 | 259.30 | 52.15 | 25.17 |
| Norway | 7635.32 | 5091.43 | - | -33.32 | 54.97 | 51.55 | -3.42 | -6.22 | 1523.85 | 1325.84 | -198.01 | -12.99 |
| | | | 2543.89 | | | | | | | | | |
| Oman | 43652.8 | 48810.9 | 5158.09 | 11.82 | 61.68 | 83.60 | 21.92 | 35.53 | 2061.06 | 2964.87 | 903.81 | 43.85 |
| | 5 | 4 | | | | | | | | | | |
| Pakistan | 131691 | 175682 | 439908. | 33.40 | 9656.98 | 16207.7 | 6550.76 | 67.83 | 346678. | 610162. | 263484. | 76.00 |
| | 9.65 | 8.46 | 81 | | | 4 | | | 38 | 86 | 47 | |
| Palau | 312.66 | 220.59 | -92.07 | -29.45 | 1.73 | 2.75 | 1.02 | 59.09 | 62.76 | 96.32 | 33.56 | 53.48 |
| Palestine | 23744.2 | 19037.1 | - | -19.82 | 88.69 | 119.83 | 31.14 | 35.11 | 2537.22 | 3523.47 | 986.25 | 38.87 |
| | 7 | 7 | 4707.10 | | | | | | | | | |
| Panama | 5722.29 | 5460.10 | -262.19 | -4.58 | 22.99 | 34.31 | 11.32 | 49.23 | 800.95 | 1010.73 | 209.78 | 26.19 |

| | | | | | | | | | | | | | |
|-------------------|-----|---------|---------|---------|--------|---------|---------|---------|--------|---------|---------|---------|--------|
| Papua | New | 121072. | 181740. | 60667.8 | 50.11 | 159.37 | 289.38 | 130.01 | 81.58 | 7049.58 | 12069.9 | 5020.35 | 71.21 |
| Guinea | | 71 | 59 | 8 | | | | | | | 3 | | |
| Paraguay | | 50560.6 | 62914.1 | 12353.5 | 24.43 | 73.27 | 118.48 | 45.21 | 61.70 | 2467.83 | 3866.18 | 1398.35 | 56.66 |
| | | 4 | 4 | 0 | | | | | | | | | |
| Peru | | 62187.5 | 87821.4 | 25633.8 | 41.22 | 815.26 | 846.30 | 31.04 | 3.81 | 27079.0 | 24254.3 | - | -10.43 |
| | | 7 | 1 | 4 | | | | | | 0 | 5 | 2824.65 | |
| Philippines | | 235399 | 189783 | - | -19.38 | 4962.60 | 6056.56 | 1093.96 | 22.04 | 188092. | 212648. | 24556.2 | 13.06 |
| | | 1.09 | 7.29 | 456153. | | | | | | 61 | 88 | 7 | |
| | | | | 81 | | | | | | | | | |
| Poland | | 147644. | 46274.8 | - | -68.66 | 2540.50 | 1754.84 | -785.66 | -30.93 | 73511.2 | 54925.3 | - | -25.28 |
| | | 73 | 2 | 101369. | | | | | | 0 | 2 | 18585.8 | |
| | | | | 91 | | | | | | | | 7 | |
| Portugal | | 31718.0 | 17726.0 | - | -44.11 | 443.95 | 258.16 | -185.79 | -41.85 | 13595.5 | 6937.07 | - | -48.98 |
| | | 5 | 0 | 13992.0 | | | | | | 4 | | 6658.46 | |
| | | | | 6 | | | | | | | | | |
| Puerto Rico | | 7020.55 | 4069.32 | - | -42.04 | 199.03 | 107.86 | -91.18 | -45.81 | 6130.68 | 2777.62 | - | -54.69 |
| | | | | 2951.23 | | | | | | | | 3353.06 | |
| Qatar | | 4894.45 | 18785.1 | 13890.6 | 283.80 | 17.65 | 70.95 | 53.30 | 302.05 | 611.98 | 2417.54 | 1805.56 | 295.04 |
| | | | 5 | 9 | | | | | | | | | |
| Republic of Congo | | 66108.9 | 82819.6 | 16710.6 | 25.28 | 240.12 | 311.83 | 71.71 | 29.86 | 8494.14 | 11285.2 | 2791.07 | 32.86 |
| | | 9 | 8 | 9 | | | | | | | 1 | | |
| Romania | | 99126.6 | 55264.4 | - | -44.25 | 2649.39 | 2002.85 | -646.54 | -24.40 | 83824.7 | 57274.6 | - | -31.67 |
| | | 4 | 2 | 43862.2 | | | | | | 6 | 1 | 26550.1 | |
| | | | | 2 | | | | | | | | 6 | |
| Russia | | 323880. | 189247. | - | -41.57 | 4261.95 | 7098.01 | 2836.06 | 66.54 | 140130. | 249954. | 109824. | 78.37 |

| | | | | | | | | | | | | |
|----------------------------------|---------|---------|---------|--------|--------|---------|---------|--------|---------|---------|---------|--------|
| | 44 | 18 | 134633. | | | | | | 41 | 81 | 41 | |
| | | | 25 | | | | | | | | | |
| Rwanda | 111671. | 102663. | - | -8.07 | 427.16 | 343.27 | -83.90 | -19.64 | 16483.6 | 12918.3 | - | -21.63 |
| | 31 | 15 | 9008.16 | | | | | | 4 | 8 | 3565.26 | |
| Saint Kitts and Nevis | 121.06 | 125.41 | 4.35 | 3.59 | 2.86 | 1.59 | -1.28 | -44.64 | 84.12 | 48.50 | -35.62 | -42.35 |
| Saint Lucia | 334.66 | 332.50 | -2.16 | -0.64 | 4.26 | 3.39 | -0.87 | -20.43 | 135.68 | 103.25 | -32.43 | -23.90 |
| Saint Vincent and the Grenadines | 250.12 | 174.91 | -75.21 | -30.07 | 3.17 | 2.40 | -0.77 | -24.34 | 101.24 | 74.64 | -26.60 | -26.27 |
| Samoa | 3609.78 | 3558.61 | -51.18 | -1.42 | 13.51 | 15.92 | 2.41 | 17.81 | 466.74 | 540.46 | 73.71 | 15.79 |
| San Marino | 62.22 | 60.15 | -2.08 | -3.34 | 0.66 | 0.79 | 0.14 | 21.13 | 16.65 | 18.06 | 1.41 | 8.49 |
| Sao Tome and Principe | 3625.79 | 3912.00 | 286.21 | 7.89 | 23.50 | 23.28 | -0.22 | -0.93 | 778.18 | 797.63 | 19.45 | 2.50 |
| Saudi Arabia | 350035. | 348966. | - | -0.31 | 748.95 | 784.46 | 35.51 | 4.74 | 22343.9 | 25312.4 | 2968.44 | 13.29 |
| | 44 | 07 | 1069.37 | | | | | | 9 | 4 | | |
| Senegal | 207529. | 253099. | 45570.6 | 21.96 | 860.14 | 1190.15 | 330.01 | 38.37 | 29494.0 | 40669.8 | 11175.7 | 37.89 |
| | 20 | 85 | 5 | | | | | | 3 | 2 | 9 | |
| Serbia | 24831.0 | 16793.0 | - | -32.37 | 614.23 | 405.64 | -208.59 | -33.96 | 19074.0 | 10950.2 | - | -42.59 |
| | 1 | 9 | 8037.92 | | | | | | 9 | 1 | 8123.88 | |
| Seychelles | 1010.88 | 993.65 | -17.23 | -1.70 | 9.27 | 11.32 | 2.06 | 22.19 | 310.48 | 380.60 | 70.12 | 22.58 |
| Sierra Leone | 111450. | 156044. | 44593.4 | 40.01 | 671.20 | 681.32 | 10.12 | 1.51 | 23271.4 | 26093.8 | 2822.41 | 12.13 |
| | 74 | 17 | 3 | | | | | | 6 | 7 | | |
| Singapore | 46626.1 | 52739.7 | 6113.70 | 13.11 | 239.69 | 502.47 | 262.78 | 109.63 | 7201.70 | 12384.1 | 5182.45 | 71.96 |
| | 0 | 9 | | | | | | | | 5 | | |

| | | | | | | | | | | | | |
|--------------------|---------------|---------------|--------------------|--------|--------------|--------------|---------|--------|---------------|---------------|-------------------|--------|
| Slovakia | 19782.4 9 | 13112.2 6 | - 6670.23 | -33.72 | 551.27 | 358.85 | -192.42 | -34.90 | 18405.1 6 | 11208.3 7 | - 7196.80 | -39.10 |
| Slovenia | 8079.53 | 5785.98 | - 2293.55 | -28.39 | 248.98 | 146.78 | -102.20 | -41.05 | 8043.81 | 3928.22 | - 4115.59 | -51.16 |
| Solomon Islands | 10066.7 1 | 9204.05 | -862.66 | -8.57 | 41.51 | 59.29 | 17.79 | 42.85 | 1738.31 | 2484.03 | 745.72 | 42.90 |
| Somalia | 285427. 81 | 713251. 55 | 427823. 74 | 149.89 | 716.90 | 1596.89 | 879.99 | 122.75 | 27437.9 9 | 62593.0 0 | 35155.0 1 | 128.13 |
| South Africa | 352922. 13 | 215307. 27 | - 137614. 85 | -38.99 | 2010.21 | 2224.26 | 214.05 | 10.65 | 78517.9 0 | 78604.9 0 | 87.00 | 0.11 |
| South Korea | 730003. 39 | 546400. 72 | - 183602. 66 | -25.15 | 10331.6 4 | 11589.0 3 | 1257.39 | 12.17 | 362971. 43 | 313344. 22 | - 49627.2 2 | -13.67 |
| South Sudan | 118087. 77 | 150622. 34 | 32534.5 7 | 27.55 | 357.55 | 540.88 | 183.33 | 51.27 | 12426.1 8 | 19009.1 0 | 6582.92 | 52.98 |
| Spain | 121854. 20 | 84693.5 1 | - 37160.6 9 | -30.50 | 1478.52 | 954.22 | -524.29 | -35.46 | 40574.0 8 | 23239.5 5 | - 17334.5 3 | -42.72 |
| Sri Lanka | 115968. 94 | 112864. 03 | - 3104.91 | -2.68 | 1545.20 | 1273.58 | -271.62 | -17.58 | 55424.3 6 | 39144.3 2 | - 16280.0 4 | -29.37 |
| Sudan | 408960. 61 | 452628. 41 | 43667.8 0 | 10.68 | 2522.94 | 1745.71 | -777.23 | -30.81 | 93941.8 9 | 57992.4 7 | - 35949.4 2 | -38.27 |

| | | | | | | | | | | | | |
|-------------|------------|-----------|------------|--------|---------|----------|---------|--------|-----------|-----------|-----------|--------|
| Suriname | 962.38 | 988.95 | 26.57 | 2.76 | 15.64 | 13.15 | -2.49 | -15.92 | 543.66 | 412.79 | -130.88 | -24.07 |
| Sweden | 11162.78 | 10900.94 | -261.84 | -2.35 | 100.34 | 128.78 | 28.43 | 28.34 | 2728.97 | 3040.90 | 311.94 | 11.43 |
| Switzerland | 15197.14 | 16891.74 | 1694.60 | 11.15 | 129.57 | 212.40 | 82.83 | 63.93 | 3759.01 | 5170.13 | 1411.12 | 37.54 |
| Syria | 244266.66 | 123281.54 | -120985.12 | -49.53 | 506.75 | 552.83 | 46.08 | 9.09 | 16419.92 | 15611.59 | -808.33 | -4.92 |
| Taiwan | 872905.29 | 591080.32 | -281824.98 | -32.29 | 3734.34 | 3678.86 | -55.48 | -1.49 | 122204.10 | 105679.95 | -16524.15 | -13.52 |
| Tajikistan | 57403.68 | 62551.24 | 5147.57 | 8.97 | 353.46 | 444.94 | 91.49 | 25.88 | 16368.79 | 17298.37 | 929.57 | 5.68 |
| Tanzania | 642676.76 | 763977.41 | 121300.65 | 18.87 | 1365.18 | 1601.76 | 236.58 | 17.33 | 48169.73 | 58862.43 | 10692.70 | 22.20 |
| Thailand | 1256145.09 | 980613.45 | -275531.64 | -21.93 | 6983.26 | 13239.80 | 6256.55 | 89.59 | 250981.55 | 407722.51 | 156740.96 | 62.45 |
| Timor-Leste | 11923.22 | 13503.95 | 1580.74 | 13.26 | 55.00 | 81.65 | 26.65 | 48.46 | 2158.94 | 2600.35 | 441.41 | 20.45 |
| Togo | 69736.96 | 108520.33 | 38783.37 | 55.61 | 440.90 | 712.94 | 272.04 | 61.70 | 16547.93 | 26155.91 | 9607.98 | 58.06 |
| Tokelau | 39.98 | 29.46 | -10.52 | -26.32 | 0.19 | 0.14 | -0.05 | -26.17 | 5.81 | 4.33 | -1.48 | -25.44 |
| Tonga | 2579.06 | 1212.83 | -1366.23 | -52.97 | 18.88 | 18.29 | -0.59 | -3.15 | 662.48 | 599.35 | -63.13 | -9.53 |

| | | | | | | | | | | | | |
|------------------------------|-----------|-----------|-----------|--------|---------|---------|---------|--------|-----------|-----------|-----------|--------|
| Trinidad and Tobago | 2485.91 | 2093.22 | -392.69 | -15.80 | 39.91 | 26.28 | -13.63 | -34.15 | 1359.80 | 796.40 | -563.39 | -41.43 |
| Tunisia | 83797.40 | 58480.96 | -25316.44 | -30.21 | 201.71 | 211.48 | 9.77 | 4.84 | 6930.44 | 5967.35 | -963.09 | -13.90 |
| Turkey | 628454.59 | 565503.03 | -62951.55 | -10.02 | 3819.11 | 3530.43 | -288.68 | -7.56 | 119530.36 | 89397.99 | -30132.38 | -25.21 |
| Turkmenistan | 37181.68 | 33035.95 | -4145.73 | -11.15 | 320.13 | 502.42 | 182.28 | 56.94 | 14984.04 | 19980.14 | 4996.10 | 33.34 |
| Tuvalu | 245.63 | 209.88 | -35.75 | -14.55 | 1.43 | 1.27 | -0.16 | -11.47 | 50.00 | 43.13 | -6.87 | -13.74 |
| Uganda | 460252.56 | 541155.19 | 80902.64 | 17.58 | 825.34 | 1205.83 | 380.48 | 46.10 | 28432.05 | 45497.58 | 17065.53 | 60.02 |
| UK | 92850.80 | 113511.51 | 20660.71 | 22.25 | 588.86 | 1447.07 | 858.21 | 145.74 | 17091.30 | 40027.38 | 22936.07 | 134.20 |
| Ukraine | 144961.72 | 92544.37 | -52417.36 | -36.16 | 1963.46 | 3799.09 | 1835.64 | 93.49 | 65051.52 | 144035.16 | 78983.64 | 121.42 |
| United Arab Emirates | 12426.72 | 49621.83 | 37195.11 | 299.32 | 43.35 | 264.47 | 221.12 | 510.04 | 1714.39 | 10442.05 | 8727.66 | 509.08 |
| United States Virgin Islands | 213.03 | 142.76 | -70.27 | -32.99 | 3.61 | 3.52 | -0.09 | -2.46 | 120.52 | 96.67 | -23.86 | -19.79 |
| Uruguay | 4319.11 | 3381.02 | -938.09 | -21.72 | 94.45 | 64.21 | -30.24 | -32.02 | 2623.25 | 1606.74 | -1016.50 | -38.75 |
| USA | 341534. | 218003. | - | -36.17 | 2497.54 | 4486.26 | 1988.72 | 79.63 | 77541.4 | 122497. | 44956.0 | 57.98 |

| | | | | | | | | | | | | |
|------------|---------|---------|---------|--------|---------|---------|---------|-------|---------|---------|---------|--------|
| | 90 | 14 | 123531. | | | | | | 4 | 49 | 5 | |
| | | | 76 | | | | | | | | | |
| Uzbekistan | 364657. | 399796. | 35138.6 | 9.64 | 1583.87 | 2599.36 | 1015.49 | 64.11 | 74738.9 | 99925.5 | 25186.6 | 33.70 |
| | 99 | 59 | 0 | | | | | | 2 | 6 | 4 | |
| Vanuatu | 4360.70 | 4410.79 | 50.09 | 1.15 | 16.87 | 26.97 | 10.10 | 59.86 | 646.59 | 978.48 | 331.89 | 51.33 |
| Venezuela | 51409.3 | 53908.6 | 2499.29 | 4.86 | 242.21 | 283.34 | 41.13 | 16.98 | 8384.70 | 8648.75 | 264.05 | 3.15 |
| | 8 | 7 | | | | | | | | | | |
| Vietnam | 205235 | 191107 | - | -6.88 | 7443.32 | 7602.77 | 159.45 | 2.14 | 232074. | 240613. | 8538.92 | 3.68 |
| | 7.31 | 6.17 | 141281. | | | | | | 16 | 08 | | |
| | | | 14 | | | | | | | | | |
| Yemen | 374261. | 563409. | 189148. | 50.54 | 1075.31 | 981.53 | -93.78 | -8.72 | 40484.8 | 32866.3 | - | -18.82 |
| | 09 | 86 | 77 | | | | | | 3 | 2 | 7618.51 | |
| Zambia | 228459. | 333596. | 105136. | 46.02 | 623.34 | 867.70 | 244.37 | 39.20 | 22453.5 | 33570.1 | 11116.6 | 49.51 |
| | 30 | 20 | 90 | | | | | | 7 | 8 | 1 | |
| Zimbabwe | 373135. | 321710. | - | -13.78 | 802.91 | 861.38 | 58.47 | 7.28 | 28393.1 | 32152.9 | 3759.87 | 13.24 |
| | 16 | 91 | 51424.2 | | | | | | 2 | 9 | | |
| | | | 5 | | | | | | | | | |

Table S6 Country-wise EAPC of ASIR, ASMR and ASDR of hepatitis B from 1990 to 2019

| location | EAPC- ASIR | UCI | LCI | EAPC- ASMR | UCI | LCI | EAPC- ASDR | UCI | LCI |
|----------------|---------------|-------|-------|---------------|-------|-------|---------------|-------|-------|
| Afghanistan | -0.85 | -0.71 | -0.99 | -2.32 | -1.90 | -2.74 | -2.49 | -2.06 | -2.91 |
| Albania | -2.01 | -1.91 | -2.12 | -3.98 | -3.43 | -4.54 | -3.74 | -3.22 | -4.26 |
| Algeria | -1.68 | -1.53 | -1.83 | -3.39 | -3.09 | -3.68 | -3.60 | -3.34 | -3.86 |
| American Samoa | -0.35 | -0.24 | -0.45 | -0.13 | -0.05 | -0.20 | -0.10 | -0.01 | -0.19 |

| | | | | | | | | | |
|------------------------|-------|-------|-------|-------|-------|-------|-------|-------|-------|
| Andorra | -2.38 | -2.24 | -2.52 | -1.68 | -1.52 | -1.84 | -1.81 | -1.66 | -1.96 |
| Angola | -1.00 | -0.89 | -1.11 | -2.10 | -1.92 | -2.28 | -2.17 | -2.01 | -2.33 |
| Antigua and Barbuda | -1.84 | -1.74 | -1.94 | -4.60 | -4.14 | -5.07 | -4.80 | -4.34 | -5.27 |
| Argentina | -0.97 | -0.89 | -1.04 | -1.82 | -1.60 | -2.04 | -2.06 | -1.87 | -2.25 |
| Armenia | -1.85 | -1.73 | -1.97 | 1.53 | 2.30 | 0.77 | 0.93 | 1.63 | 0.24 |
| Australia | -1.53 | -1.43 | -1.63 | -0.91 | -0.70 | -1.13 | -0.95 | -0.75 | -1.14 |
| Austria | -1.98 | -1.81 | -2.16 | -3.50 | -3.12 | -3.89 | -3.95 | -3.56 | -4.33 |
| Azerbaijan | -0.77 | -0.63 | -0.91 | -0.48 | 0.25 | -1.20 | -1.15 | -0.53 | -1.78 |
| Bahamas | -1.36 | -1.20 | -1.52 | -3.72 | -3.45 | -3.98 | -3.72 | -3.43 | -4.00 |
| Bahrain | -2.12 | -2.00 | -2.24 | -4.39 | -3.95 | -4.82 | -4.55 | -4.08 | -5.03 |
| Bangladesh | -1.33 | -1.20 | -1.45 | -3.96 | -3.51 | -4.40 | -4.30 | -3.94 | -4.66 |
| Barbados | -1.55 | -1.43 | -1.67 | -2.93 | -2.67 | -3.19 | -3.15 | -2.90 | -3.41 |
| Belarus | -2.35 | -2.13 | -2.57 | 1.19 | 2.49 | -0.10 | 1.36 | 2.76 | -0.01 |
| Belgium | -1.70 | -1.59 | -1.82 | -1.79 | -1.55 | -2.04 | -2.01 | -1.73 | -2.29 |
| Belize | -1.53 | -1.44 | -1.62 | -2.56 | -2.14 | -2.98 | -2.50 | -2.09 | -2.91 |
| Benin | -1.10 | -0.97 | -1.22 | -2.20 | -1.94 | -2.47 | -2.07 | -1.81 | -2.32 |
| Bermuda | -0.27 | -0.25 | -0.29 | -3.66 | -3.00 | -4.33 | -3.72 | -3.04 | -4.40 |
| Bhutan | -2.37 | -2.23 | -2.50 | -2.54 | -2.13 | -2.95 | -2.89 | -2.49 | -3.28 |
| Bolivia | -0.77 | -0.69 | -0.85 | -2.31 | -2.00 | -2.61 | -2.69 | -2.38 | -3.00 |
| Bosnia and Herzegovina | -1.32 | -1.23 | -1.40 | -2.56 | -2.36 | -2.76 | -2.82 | -2.63 | -3.00 |
| Botswana | -2.34 | -2.26 | -2.42 | -3.75 | -3.20 | -4.31 | -3.66 | -3.09 | -4.22 |
| Brazil | -2.89 | -2.68 | -3.10 | -3.68 | -3.28 | -4.07 | -3.88 | -3.47 | -4.28 |
| Brunei Darussalam | -3.12 | -2.98 | -3.25 | -0.82 | -0.57 | -1.06 | -0.88 | -0.65 | -1.10 |
| Bulgaria | -2.80 | -2.67 | -2.93 | -1.71 | -1.39 | -2.03 | -1.51 | -1.19 | -1.83 |
| Burkina Faso | -0.30 | -0.18 | -0.42 | -2.77 | -2.45 | -3.08 | -2.51 | -2.19 | -2.83 |

| | | | | | | | | | |
|-------------------------------------|-------|-------|-------|-------|-------|-------|-------|-------|-------|
| Burundi | -1.18 | -1.03 | -1.34 | -2.85 | -2.39 | -3.30 | -2.83 | -2.40 | -3.26 |
| Cabo Verde | -1.44 | -1.30 | -1.57 | -0.89 | -0.32 | -1.47 | -1.08 | -0.52 | -1.63 |
| Cambodia | -1.51 | -1.34 | -1.68 | -2.10 | -1.73 | -2.47 | -2.31 | -1.96 | -2.66 |
| Cameroon | -1.26 | -1.14 | -1.39 | -2.49 | -2.14 | -2.85 | -2.28 | -1.90 | -2.65 |
| Canada | -0.73 | -0.69 | -0.78 | 0.56 | 0.66 | 0.45 | 0.49 | 0.59 | 0.39 |
| Central African Republic | -0.70 | -0.63 | -0.77 | -1.32 | -1.13 | -1.51 | -1.31 | -1.13 | -1.48 |
| Chad | -0.59 | -0.54 | -0.65 | -0.37 | -0.17 | -0.57 | -0.24 | 0.03 | -0.52 |
| Chile | -0.79 | -0.70 | -0.88 | -2.96 | -2.49 | -3.43 | -3.26 | -2.82 | -3.69 |
| China | -2.35 | -2.13 | -2.58 | -4.92 | -4.47 | -5.37 | -5.15 | -4.66 | -5.64 |
| Colombia | -2.20 | -2.00 | -2.39 | -2.45 | -2.16 | -2.73 | -2.61 | -2.33 | -2.90 |
| Comoros | -1.15 | -1.05 | -1.26 | -1.80 | -1.52 | -2.08 | -1.83 | -1.56 | -2.10 |
| Cook Islands | -2.35 | -2.15 | -2.55 | -1.80 | -1.56 | -2.05 | -1.64 | -1.37 | -1.91 |
| Costa Rica | -1.80 | -1.68 | -1.91 | -2.21 | -1.86 | -2.55 | -2.43 | -2.06 | -2.79 |
| Cote d'Ivoire | -1.55 | -1.46 | -1.64 | -2.34 | -2.13 | -2.55 | -2.22 | -2.03 | -2.41 |
| Croatia | -2.09 | -2.00 | -2.19 | -4.19 | -3.70 | -4.69 | -4.50 | -4.01 | -5.00 |
| Cuba | -2.59 | -2.43 | -2.76 | -3.30 | -2.17 | -4.41 | -3.29 | -2.20 | -4.37 |
| Cyprus | -2.75 | -2.70 | -2.79 | -3.41 | -3.09 | -3.73 | -3.23 | -2.95 | -3.51 |
| Czech Republic | -1.68 | -1.53 | -1.84 | -2.30 | -1.69 | -2.91 | -2.48 | -1.87 | -3.09 |
| Democratic Republic of the Congo | -0.45 | -0.28 | -0.62 | -1.94 | -1.61 | -2.27 | -1.74 | -1.42 | -2.07 |
| Denmark | -0.08 | -0.04 | -0.13 | -0.54 | -0.21 | -0.87 | -1.20 | -0.87 | -1.53 |
| Djibouti | -0.92 | -0.84 | -1.01 | -1.11 | -0.79 | -1.44 | -1.19 | -0.86 | -1.52 |
| Dominica | -1.09 | -0.91 | -1.26 | -3.22 | -2.87 | -3.57 | -3.34 | -3.01 | -3.66 |
| Dominican Republic | -1.21 | -1.12 | -1.30 | -1.96 | -1.48 | -2.44 | -2.06 | -1.54 | -2.59 |
| Ecuador | -0.80 | -0.71 | -0.90 | -1.43 | -1.09 | -1.77 | -2.06 | -1.71 | -2.41 |

| | | | | | | | | | |
|-------------------|-------|-------|-------|-------|-------|-------|-------|-------|-------|
| Egypt | -1.48 | -1.35 | -1.61 | -2.50 | -2.31 | -2.68 | -2.47 | -2.31 | -2.64 |
| El Salvador | -2.15 | -2.07 | -2.23 | -3.34 | -2.99 | -3.70 | -3.56 | -3.20 | -3.92 |
| Equatorial Guinea | -0.38 | -0.33 | -0.42 | -2.84 | -2.59 | -3.10 | -3.17 | -2.89 | -3.46 |
| Eritrea | -1.74 | -1.60 | -1.89 | -1.75 | -1.21 | -2.30 | -1.76 | -1.24 | -2.27 |
| Estonia | -1.79 | -1.61 | -1.98 | -0.53 | 0.61 | -1.66 | -0.64 | 0.56 | -1.82 |
| Eswatini | -2.13 | -2.01 | -2.24 | 0.08 | 0.82 | -0.66 | 0.31 | 1.06 | -0.44 |
| Ethiopia | -1.06 | -0.95 | -1.17 | -1.22 | -1.07 | -1.37 | -1.56 | -1.42 | -1.70 |
| Fiji | -2.23 | -1.97 | -2.50 | -1.00 | -0.69 | -1.31 | -0.99 | -0.67 | -1.31 |
| Finland | -0.17 | -0.14 | -0.20 | 1.43 | 1.80 | 1.06 | 1.16 | 1.56 | 0.77 |
| France | -1.27 | -1.18 | -1.36 | -2.22 | -2.03 | -2.40 | -2.40 | -2.21 | -2.59 |
| Gabon | -1.38 | -1.30 | -1.46 | -2.01 | -1.71 | -2.31 | -2.16 | -1.88 | -2.45 |
| Gambia | -2.25 | -2.16 | -2.34 | -0.80 | -0.60 | -1.00 | -0.68 | -0.47 | -0.89 |
| Georgia | -1.00 | -0.85 | -1.14 | -0.42 | -0.14 | -0.71 | 0.00 | 0.32 | -0.32 |
| Germany | -1.42 | -1.33 | -1.50 | -3.35 | -3.07 | -3.63 | -3.84 | -3.54 | -4.14 |
| Ghana | -1.37 | -1.21 | -1.54 | -2.51 | -2.28 | -2.74 | -2.39 | -2.17 | -2.60 |
| Greece | -1.70 | -1.64 | -1.77 | -0.84 | -0.75 | -0.92 | -0.51 | -0.42 | -0.60 |
| Greenland | -0.39 | -0.34 | -0.44 | 0.40 | 0.49 | 0.30 | 0.17 | 0.27 | 0.07 |
| Grenada | -1.69 | -1.61 | -1.76 | -4.57 | -4.16 | -4.98 | -4.72 | -4.30 | -5.14 |
| Guam | -0.44 | -0.34 | -0.54 | -0.33 | -0.13 | -0.53 | 0.18 | 0.31 | 0.06 |
| Guatemala | -1.28 | -1.16 | -1.40 | -2.74 | -2.47 | -3.00 | -2.84 | -2.58 | -3.11 |
| Guinea | -0.50 | -0.43 | -0.58 | -0.41 | -0.22 | -0.61 | -0.33 | -0.10 | -0.55 |
| Guinea-Bissau | -0.80 | -0.74 | -0.86 | -1.03 | -0.87 | -1.19 | -0.99 | -0.80 | -1.19 |
| Guyana | -1.30 | -1.12 | -1.47 | -2.79 | -2.41 | -3.16 | -2.81 | -2.44 | -3.18 |
| Haiti | -0.61 | -0.44 | -0.78 | -1.38 | -1.23 | -1.54 | -1.47 | -1.30 | -1.63 |
| Honduras | -1.71 | -1.64 | -1.77 | -0.85 | -0.61 | -1.08 | -1.38 | -1.13 | -1.62 |

| | | | | | | | | | |
|------------|-------|-------|-------|-------|-------|-------|-------|-------|-------|
| Hungary | -0.15 | -0.14 | -0.16 | -3.91 | -3.49 | -4.32 | -4.53 | -4.06 | -5.01 |
| Iceland | -0.27 | -0.23 | -0.30 | -0.43 | -0.34 | -0.52 | -0.58 | -0.48 | -0.68 |
| India | -1.09 | -0.96 | -1.21 | -0.32 | -0.10 | -0.55 | -0.24 | 0.03 | -0.50 |
| Indonesia | -1.45 | -1.29 | -1.60 | -1.73 | -1.46 | -2.01 | -2.29 | -2.00 | -2.58 |
| Iran | -2.95 | -2.82 | -3.08 | -3.18 | -2.84 | -3.51 | -3.25 | -2.92 | -3.57 |
| Iraq | -2.14 | -2.05 | -2.24 | -1.70 | -1.51 | -1.89 | -1.84 | -1.68 | -2.00 |
| Ireland | -1.18 | -1.00 | -1.35 | 1.55 | 2.04 | 1.06 | 1.53 | 2.08 | 0.98 |
| Israel | -2.11 | -2.00 | -2.22 | -2.94 | -2.49 | -3.39 | -2.96 | -2.57 | -3.34 |
| Italy | -4.72 | -4.60 | -4.85 | -3.48 | -3.25 | -3.71 | -3.62 | -3.39 | -3.86 |
| Jamaica | -1.55 | -1.40 | -1.70 | -2.18 | -1.79 | -2.57 | -2.27 | -1.87 | -2.67 |
| Japan | -0.85 | -0.77 | -0.94 | -2.60 | -2.37 | -2.83 | -2.96 | -2.69 | -3.22 |
| Jordan | -3.46 | -3.40 | -3.52 | -4.37 | -3.95 | -4.78 | -4.51 | -4.08 | -4.93 |
| Kazakhstan | -1.98 | -1.84 | -2.12 | -0.05 | 0.83 | -0.93 | -0.22 | 0.82 | -1.24 |
| Kenya | -1.48 | -1.18 | -1.78 | -1.07 | -0.48 | -1.66 | -0.92 | -0.33 | -1.51 |
| Kiribati | -1.10 | -0.94 | -1.26 | -2.20 | -2.05 | -2.36 | -2.17 | -2.02 | -2.32 |
| Kuwait | -3.17 | -3.02 | -3.32 | -1.83 | -1.52 | -2.14 | -2.35 | -2.04 | -2.65 |
| Kyrgyzstan | -1.54 | -1.38 | -1.70 | -1.17 | -0.24 | -2.09 | -1.19 | -0.28 | -2.08 |
| Laos | -1.00 | -0.83 | -1.17 | -2.63 | -2.53 | -2.73 | -2.88 | -2.78 | -2.97 |
| Latvia | -2.18 | -2.04 | -2.32 | -1.67 | -0.85 | -2.48 | -2.21 | -1.47 | -2.94 |
| Lebanon | -1.40 | -1.33 | -1.47 | -2.59 | -2.44 | -2.75 | -2.63 | -2.44 | -2.82 |
| Lesotho | -1.46 | -1.33 | -1.58 | -0.20 | 0.26 | -0.66 | -0.07 | 0.38 | -0.51 |
| Liberia | -0.82 | -0.70 | -0.95 | -1.75 | -1.56 | -1.94 | -1.75 | -1.57 | -1.93 |
| Libya | -1.89 | -1.82 | -1.96 | -3.14 | -2.88 | -3.39 | -3.10 | -2.86 | -3.33 |
| Lithuania | -2.07 | -1.92 | -2.23 | 0.75 | 1.92 | -0.41 | 0.85 | 2.08 | -0.37 |
| Luxembourg | -1.81 | -1.70 | -1.91 | -3.52 | -3.13 | -3.92 | -3.79 | -3.41 | -4.17 |

| | | | | | | | | | |
|----------------------------------|-------|-------|-------|-------|-------|-------|-------|-------|-------|
| Macedonia | -1.11 | -0.99 | -1.22 | -1.01 | -0.64 | -1.38 | -1.23 | -0.87 | -1.58 |
| Madagascar | -1.49 | -1.33 | -1.64 | -2.51 | -2.09 | -2.93 | -2.50 | -2.13 | -2.86 |
| Malawi | -1.21 | -1.04 | -1.38 | -3.31 | -2.75 | -3.86 | -3.22 | -2.66 | -3.78 |
| Malaysia | -1.56 | -1.44 | -1.68 | -1.01 | -0.77 | -1.25 | -1.04 | -0.88 | -1.19 |
| Maldives | -2.13 | -2.07 | -2.18 | -4.05 | -3.77 | -4.33 | -4.35 | -4.01 | -4.69 |
| Mali | -0.56 | -0.49 | -0.64 | -2.46 | -2.23 | -2.68 | -2.41 | -2.21 | -2.61 |
| Malta | -2.34 | -2.21 | -2.47 | -2.55 | -2.18 | -2.91 | -2.43 | -2.08 | -2.78 |
| Marshall Islands | -1.35 | -1.19 | -1.52 | -1.81 | -1.76 | -1.86 | -1.78 | -1.74 | -1.83 |
| Mauritania | -1.31 | -1.21 | -1.41 | -2.86 | -2.78 | -2.95 | -2.82 | -2.75 | -2.90 |
| Mauritius | -1.94 | -1.77 | -2.11 | -4.69 | -4.11 | -5.27 | -4.79 | -4.20 | -5.38 |
| Mexico | -2.66 | -2.51 | -2.82 | -2.75 | -2.36 | -3.13 | -3.07 | -2.66 | -3.47 |
| Micronesia (Federated States of) | -2.01 | -1.89 | -2.13 | -1.85 | -1.52 | -2.17 | -1.86 | -1.56 | -2.15 |
| Moldova | -1.39 | -1.30 | -1.48 | -3.39 | -2.84 | -3.94 | -3.47 | -2.96 | -3.99 |
| Monaco | -2.52 | -2.39 | -2.66 | -0.30 | 0.02 | -0.62 | -0.48 | -0.16 | -0.79 |
| Mongolia | -1.70 | -1.58 | -1.82 | -0.18 | 0.00 | -0.36 | -0.82 | -0.68 | -0.95 |
| Montenegro | -1.23 | -1.07 | -1.39 | -0.68 | -0.22 | -1.13 | -0.87 | -0.41 | -1.32 |
| Morocco | -1.73 | -1.62 | -1.84 | -3.04 | -2.88 | -3.19 | -3.25 | -3.11 | -3.40 |
| Mozambique | -1.67 | -1.50 | -1.84 | -1.74 | -1.37 | -2.10 | -1.53 | -1.18 | -1.88 |
| Myanmar | -1.09 | -0.96 | -1.21 | -1.93 | -1.60 | -2.25 | -2.00 | -1.68 | -2.31 |
| Namibia | -1.42 | -1.30 | -1.53 | -1.27 | -0.88 | -1.65 | -1.23 | -0.83 | -1.62 |
| Nauru | -1.38 | -1.17 | -1.59 | -1.77 | -1.41 | -2.13 | -1.78 | -1.45 | -2.12 |
| Nepal | -1.12 | -1.02 | -1.23 | -3.44 | -3.12 | -3.75 | -3.84 | -3.51 | -4.16 |
| Netherlands | -0.64 | -0.52 | -0.77 | -0.69 | -0.44 | -0.94 | -0.85 | -0.61 | -1.09 |
| New Zealand | -2.55 | -2.48 | -2.61 | -0.03 | 0.13 | -0.19 | -0.12 | 0.02 | -0.26 |

| | | | | | | | | | |
|--------------------------|-------|-------|-------|-------|-------|-------|-------|-------|-------|
| Nicaragua | -2.37 | -2.30 | -2.45 | -1.53 | -1.24 | -1.82 | -1.82 | -1.57 | -2.06 |
| Niger | -0.78 | -0.72 | -0.85 | -1.29 | -1.12 | -1.47 | -1.26 | -1.10 | -1.43 |
| Nigeria | -1.20 | -1.08 | -1.31 | -1.06 | -0.86 | -1.26 | -1.23 | -1.07 | -1.39 |
| Niue | -2.67 | -2.39 | -2.94 | -2.03 | -1.77 | -2.30 | -2.19 | -1.94 | -2.45 |
| North Korea | -1.43 | -1.30 | -1.56 | -1.85 | -1.70 | -1.99 | -1.94 | -1.82 | -2.06 |
| Northern Mariana Islands | -0.10 | -0.02 | -0.17 | -1.13 | -1.02 | -1.25 | -1.20 | -1.09 | -1.31 |
| Norway | -2.50 | -2.16 | -2.85 | -1.40 | -1.03 | -1.76 | -1.61 | -1.25 | -1.96 |
| Oman | -3.36 | -3.28 | -3.44 | -1.99 | -1.53 | -2.44 | -2.21 | -1.80 | -2.62 |
| Pakistan | -1.02 | -0.84 | -1.21 | -0.73 | -0.61 | -0.86 | -0.79 | -0.66 | -0.92 |
| Palau | -2.03 | -1.84 | -2.21 | -1.23 | -1.03 | -1.44 | -1.09 | -0.91 | -1.27 |
| Palestine | -2.86 | -2.68 | -3.03 | -2.78 | -2.42 | -3.14 | -2.75 | -2.40 | -3.09 |
| Panama | -1.82 | -1.71 | -1.92 | -2.01 | -1.80 | -2.22 | -2.23 | -1.99 | -2.47 |
| Papua New Guinea | -1.26 | -1.13 | -1.38 | -1.14 | -1.09 | -1.19 | -1.30 | -1.25 | -1.35 |
| Paraguay | -1.25 | -1.13 | -1.37 | -1.41 | -0.98 | -1.83 | -1.36 | -0.95 | -1.77 |
| Peru | -0.66 | -0.58 | -0.73 | -3.41 | -3.19 | -3.62 | -3.63 | -3.41 | -3.85 |
| Philippines | -2.27 | -2.10 | -2.44 | -2.79 | -2.55 | -3.03 | -2.90 | -2.67 | -3.12 |
| Poland | -5.06 | -4.79 | -5.32 | -2.94 | -2.64 | -3.24 | -2.40 | -2.03 | -2.77 |
| Portugal | -2.45 | -2.33 | -2.58 | -4.06 | -3.82 | -4.31 | -4.29 | -4.02 | -4.57 |
| Puerto Rico | -2.41 | -2.28 | -2.54 | -3.88 | -3.48 | -4.28 | -4.13 | -3.73 | -4.53 |
| Qatar | -1.64 | -1.54 | -1.75 | -1.74 | -1.39 | -2.08 | -2.46 | -2.22 | -2.70 |
| Republic of Congo | -1.70 | -1.55 | -1.85 | -2.10 | -1.80 | -2.40 | -2.23 | -1.94 | -2.51 |
| Romania | -2.04 | -1.97 | -2.10 | -2.85 | -2.22 | -3.46 | -3.01 | -2.38 | -3.63 |
| Russia | -1.76 | -1.15 | -2.36 | 1.25 | 2.42 | 0.09 | 1.60 | 2.89 | 0.32 |
| Rwanda | -1.79 | -1.55 | -2.02 | -3.99 | -3.57 | -4.41 | -4.17 | -3.79 | -4.55 |
| Saint Kitts and Nevis | -1.72 | -1.54 | -1.91 | -5.48 | -4.87 | -6.08 | -5.81 | -5.18 | -6.44 |

| | | | | | | | | | |
|----------------------------------|-------|-------|-------|-------|-------|-------|-------|-------|-------|
| Saint Lucia | -1.34 | -1.19 | -1.49 | -4.16 | -3.89 | -4.43 | -4.15 | -3.88 | -4.42 |
| Saint Vincent and the Grenadines | -1.40 | -1.25 | -1.55 | -3.20 | -2.95 | -3.45 | -3.22 | -2.99 | -3.44 |
| Samoa | -0.73 | -0.58 | -0.87 | -1.20 | -1.02 | -1.37 | -1.20 | -1.05 | -1.34 |
| San Marino | -1.84 | -1.75 | -1.92 | -2.18 | -1.74 | -2.61 | -2.14 | -1.70 | -2.57 |
| Sao Tome and Principe | -1.42 | -1.29 | -1.55 | -2.12 | -1.70 | -2.53 | -2.20 | -1.78 | -2.62 |
| Saudi Arabia | -3.05 | -2.97 | -3.13 | -3.94 | -3.59 | -4.30 | -4.08 | -3.74 | -4.41 |
| Senegal | -1.27 | -1.16 | -1.38 | -1.85 | -1.69 | -2.01 | -1.69 | -1.52 | -1.86 |
| Serbia | -1.44 | -1.27 | -1.61 | -2.32 | -1.79 | -2.85 | -2.54 | -2.03 | -3.06 |
| Seychelles | -1.62 | -1.57 | -1.67 | -2.80 | -2.42 | -3.18 | -2.96 | -2.56 | -3.35 |
| Sierra Leone | -1.49 | -1.32 | -1.65 | -2.48 | -2.12 | -2.83 | -2.22 | -1.78 | -2.65 |
| Singapore | -2.58 | -2.51 | -2.66 | -1.58 | -1.51 | -1.65 | -2.08 | -1.99 | -2.16 |
| Slovakia | -2.00 | -1.86 | -2.14 | -3.06 | -2.52 | -3.61 | -3.16 | -2.61 | -3.71 |
| Slovenia | -1.73 | -1.61 | -1.85 | -4.09 | -3.49 | -4.68 | -4.52 | -3.91 | -5.13 |
| Solomon Islands | -2.25 | -2.12 | -2.38 | -1.67 | -1.53 | -1.81 | -1.67 | -1.54 | -1.80 |
| Somalia | -0.26 | -0.22 | -0.30 | -0.54 | -0.27 | -0.82 | -0.54 | -0.27 | -0.82 |
| South Africa | -3.24 | -3.10 | -3.37 | -2.48 | -2.00 | -2.96 | -2.73 | -2.23 | -3.22 |
| South Korea | -2.36 | -2.28 | -2.44 | -2.75 | -2.35 | -3.14 | -3.11 | -2.69 | -3.53 |
| South Sudan | -0.41 | -0.36 | -0.46 | -0.09 | 0.02 | -0.20 | -0.23 | -0.12 | -0.34 |
| Spain | -2.41 | -2.24 | -2.58 | -3.86 | -3.59 | -4.13 | -3.98 | -3.73 | -4.22 |
| Sri Lanka | -1.12 | -1.00 | -1.24 | -3.63 | -2.86 | -4.39 | -4.06 | -3.24 | -4.87 |
| Sudan | -1.84 | -1.71 | -1.97 | -3.74 | -3.53 | -3.95 | -4.11 | -3.89 | -4.32 |
| Suriname | -1.36 | -1.19 | -1.54 | -3.41 | -3.16 | -3.67 | -3.62 | -3.37 | -3.87 |
| Sweden | -0.43 | -0.33 | -0.53 | -0.13 | 0.03 | -0.30 | -0.47 | -0.29 | -0.65 |
| Switzerland | -0.33 | -0.28 | -0.37 | -0.36 | -0.10 | -0.61 | -0.81 | -0.58 | -1.04 |

| | | | | | | | | | |
|------------------------------|-------|-------|-------|-------|-------|-------|-------|-------|-------|
| Syria | -2.61 | -2.54 | -2.69 | -2.71 | -2.36 | -3.07 | -2.95 | -2.58 | -3.32 |
| Taiwan | -2.75 | -2.59 | -2.91 | -3.79 | -3.47 | -4.11 | -3.66 | -3.34 | -3.98 |
| Tajikistan | -1.55 | -1.34 | -1.76 | -1.01 | -0.51 | -1.50 | -1.83 | -1.45 | -2.21 |
| Tanzania | -1.61 | -1.45 | -1.78 | -2.25 | -1.72 | -2.79 | -2.19 | -1.68 | -2.70 |
| Thailand | -2.02 | -1.91 | -2.13 | -1.12 | -0.98 | -1.26 | -1.27 | -1.13 | -1.41 |
| Timor-Leste | -1.16 | -1.00 | -1.32 | -1.20 | -1.03 | -1.36 | -1.53 | -1.36 | -1.70 |
| Togo | -0.77 | -0.67 | -0.88 | -1.87 | -1.61 | -2.13 | -1.70 | -1.43 | -1.98 |
| Tokelau | -0.49 | -0.38 | -0.59 | -1.12 | -1.04 | -1.19 | -1.17 | -1.10 | -1.24 |
| Tonga | -2.30 | -2.08 | -2.53 | -1.21 | -1.13 | -1.28 | -1.19 | -1.15 | -1.24 |
| Trinidad and Tobago | -1.27 | -1.13 | -1.40 | -3.96 | -3.62 | -4.30 | -4.05 | -3.71 | -4.38 |
| Tunisia | -2.65 | -2.58 | -2.72 | -2.75 | -2.54 | -2.96 | -2.87 | -2.64 | -3.09 |
| Turkey | -1.77 | -1.68 | -1.87 | -3.71 | -3.49 | -3.93 | -4.25 | -4.00 | -4.51 |
| Turkmenistan | -1.59 | -1.42 | -1.76 | -0.49 | 0.03 | -1.01 | -0.32 | 0.15 | -0.78 |
| Tuvalu | -1.26 | -1.10 | -1.42 | -1.71 | -1.56 | -1.86 | -1.66 | -1.51 | -1.80 |
| Uganda | -1.60 | -1.48 | -1.71 | -2.04 | -1.64 | -2.44 | -1.94 | -1.54 | -2.35 |
| UK | 0.22 | 0.34 | 0.09 | 2.25 | 2.56 | 1.94 | 2.15 | 2.51 | 1.79 |
| Ukraine | -0.77 | -0.23 | -1.31 | 2.14 | 3.35 | 0.95 | 2.58 | 3.89 | 1.30 |
| United Arab Emirates | -2.44 | -2.32 | -2.57 | -2.15 | -1.93 | -2.37 | -2.03 | -1.83 | -2.24 |
| United States Virgin Islands | -1.74 | -1.69 | -1.80 | -2.19 | -1.72 | -2.65 | -2.38 | -1.93 | -2.82 |
| Uruguay | -1.40 | -1.29 | -1.50 | -3.17 | -2.78 | -3.56 | -3.31 | -2.94 | -3.68 |
| USA | -2.68 | -2.50 | -2.86 | 0.48 | 0.58 | 0.38 | 0.17 | 0.26 | 0.07 |
| Uzbekistan | -1.53 | -1.37 | -1.70 | -0.60 | 0.22 | -1.42 | -1.08 | -0.38 | -1.77 |
| Vanuatu | -1.69 | -1.50 | -1.89 | -1.76 | -1.48 | -2.05 | -1.75 | -1.47 | -2.03 |
| Venezuela | -1.20 | -1.06 | -1.34 | -2.77 | -2.29 | -3.24 | -2.87 | -2.41 | -3.32 |
| Vietnam | -1.77 | -1.65 | -1.88 | -3.34 | -3.12 | -3.56 | -3.30 | -3.08 | -3.52 |

| | | | | | | | | | |
|----------|-------|-------|-------|-------|-------|-------|-------|-------|-------|
| Yemen | -1.60 | -1.52 | -1.68 | -3.79 | -3.59 | -3.99 | -4.05 | -3.88 | -4.22 |
| Zambia | -1.33 | -1.17 | -1.49 | -2.19 | -1.66 | -2.72 | -2.03 | -1.52 | -2.55 |
| Zimbabwe | -1.19 | -1.08 | -1.31 | -1.93 | -1.55 | -2.31 | -1.64 | -1.27 | -2.01 |
