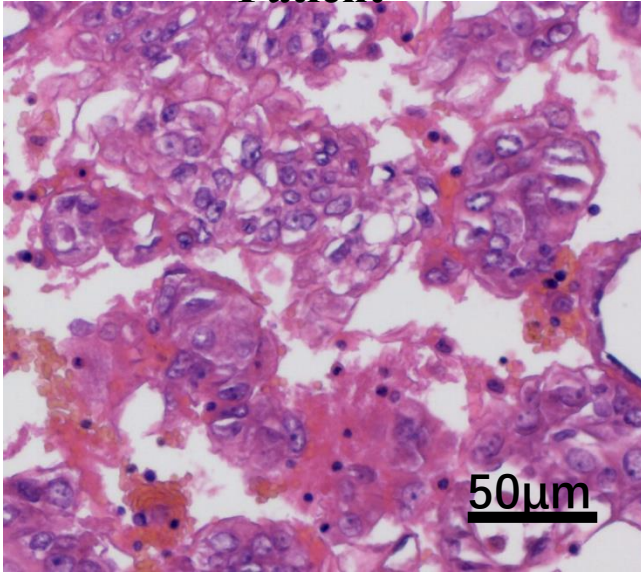
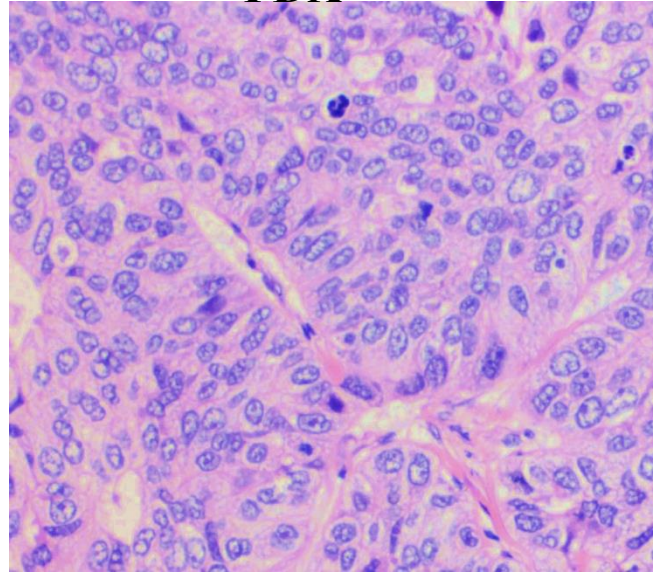


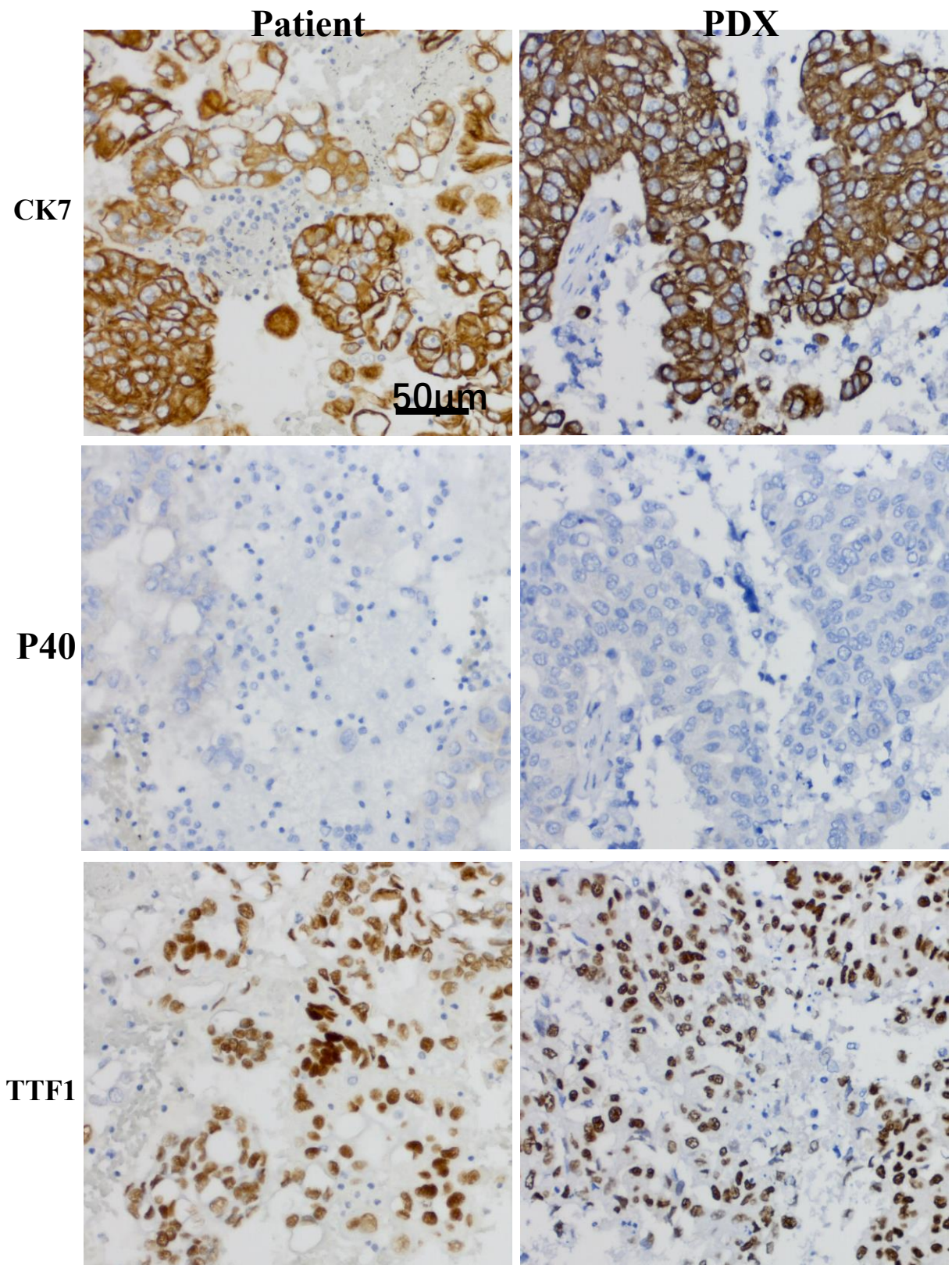
**Patient**



**PDX**



**Supplementary figure S1.** The PDX models are consistent with the histological. Tumor tissues from the patient (NO.27) and the P4 generation PDX model were fixed and examined with H&E staining.



**Supplementary figure S2.** The PDX models have the same protein expression pattern with the original tumor. IHC images of the lymph node metastasis of patients and P4

generation PDX. Tumor tissues from the patient (NO.27) and the P4 generation PDX were fixed and immunohistochemical with specific antibodies.

## 1. experimental materials

1.1 provided tissue materials No.11#, No.27#

1.2 B6 mouse genomic DNA and human blood genomic DNA are preserved in Mickey laboratory.

### 1.2 Supplementary Table S2 DNA primers.

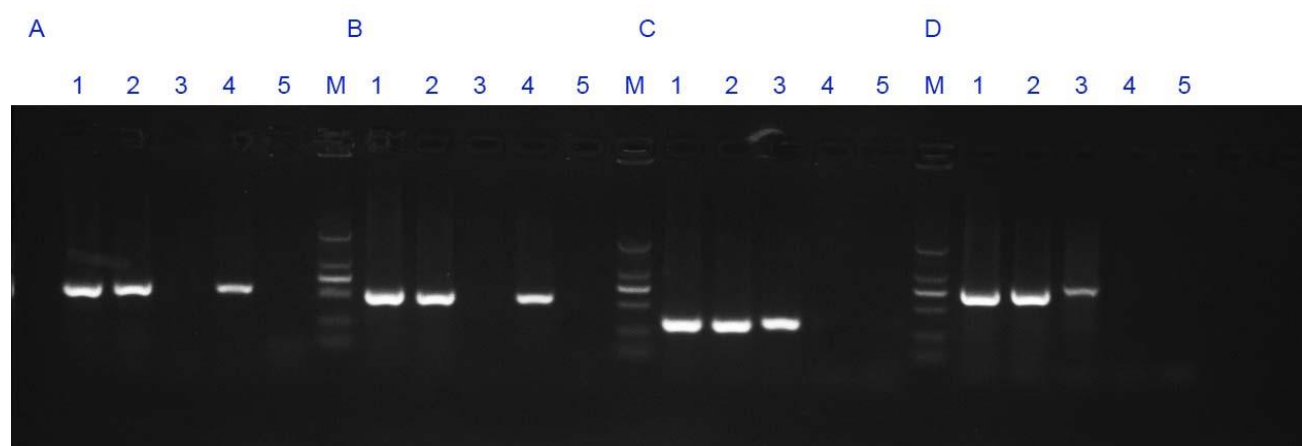
Primers	Sequences	PCR products (bp)	
mus-F1	CAGGTTGTCTCCTGCGACTT	571	Mouse genome specific primer 1
mus-R1	CAGCTGGATGTCAGAGCCAA		
mus-F2	AAGGGCATCTTGGGCTACAC	549	Mouse genome specific primer 2
mus-R2	CCTGCTTCACCTCCCCATAC		
hs-F1	GGCTCTTAAAAAGTGCAGGGTC	327	Human genome specific primer 1
Hs-R1	ATGGTACATGACAAGGTGCGG		
hs-F2	TAACTGTCTGCTTCTCTGCTGTAGGC	772	Human genome specific primer 2
Hs-R2	GCTTCACCACCTTCTTGATGTCATCA		

## 2. Experimental steps

2.1 tissue materials to extract genomic DNA.

2.2 amplification PCR

### 2.3 Supplementary Figure S3 Electrophoretic analysis



A: primer 1 (Mouse genome specific primer 1)

B: primer 2 (Mouse genome specific primer 2)

C: primer 1 (Human genome specific primer 1)

D: primer 2 (Human genome specific primer 1)

Lane 1#: tissue materials No.11#

Lane 2#: tissue materials No.27#

Lane 3#: human blood genomic DNA (human genome positive control)

Lane 4#: B6 mouse genomic DNA (mouse genome positive control)

Lane 5#: NTC, No-Template Control is a template-free control

Lane M: DL2000 Marker: 2000bp\1000bp\750bp\500bp\250bp\100bp

### 3. Experimental conclusion

Tissue source: Two mouse tumor-bearing tissues can be confirmed as human origin.