

## Antimicrobial activity of graphene oxide contributes to alteration of key stress-related and membrane bound proteins

Vaishnavi Ravikumar,<sup>1</sup> Ivan Mijakovic,<sup>1,2</sup> Santosh Pandit<sup>2</sup>

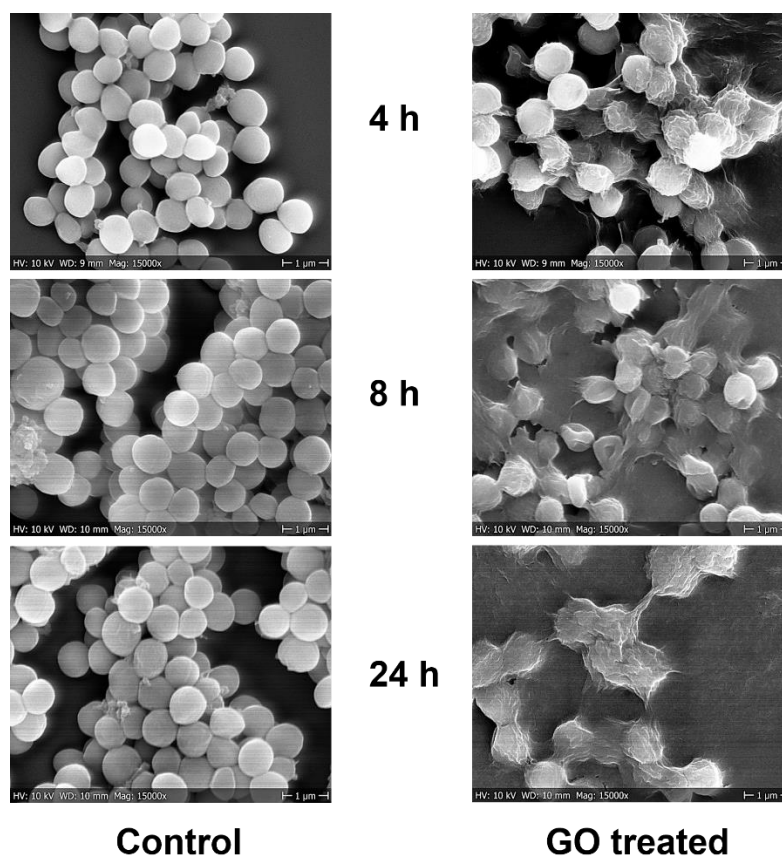
<sup>1</sup> Novo Nordisk Foundation Center for Biosustainability, Technical University of Denmark, Kongens Lyngby, Denmark.

<sup>2</sup> Department of Biology and Biological Engineering, Chalmers University of Technology, Kemivägen 10, 41296 Göteborg, Sweden.

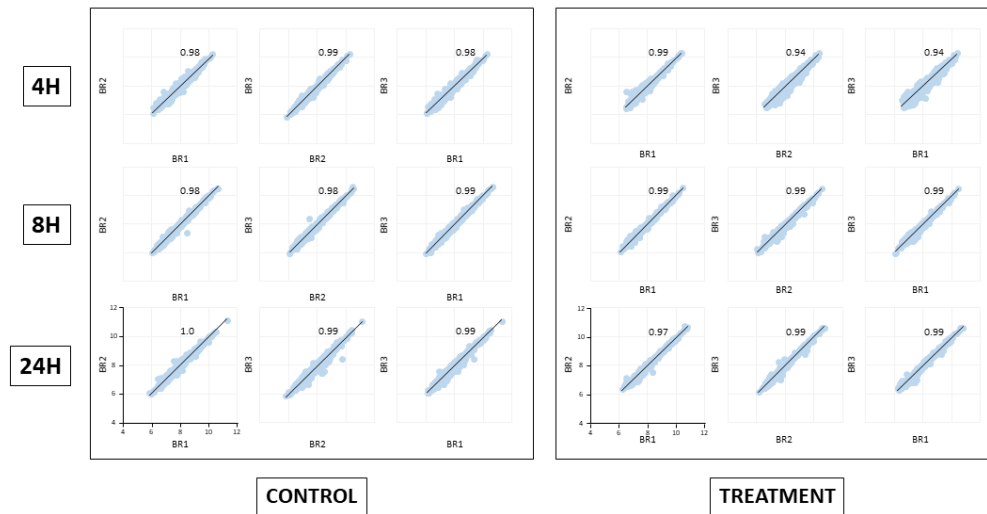
Email: pandit@chalmers.se

This PDF file includes:

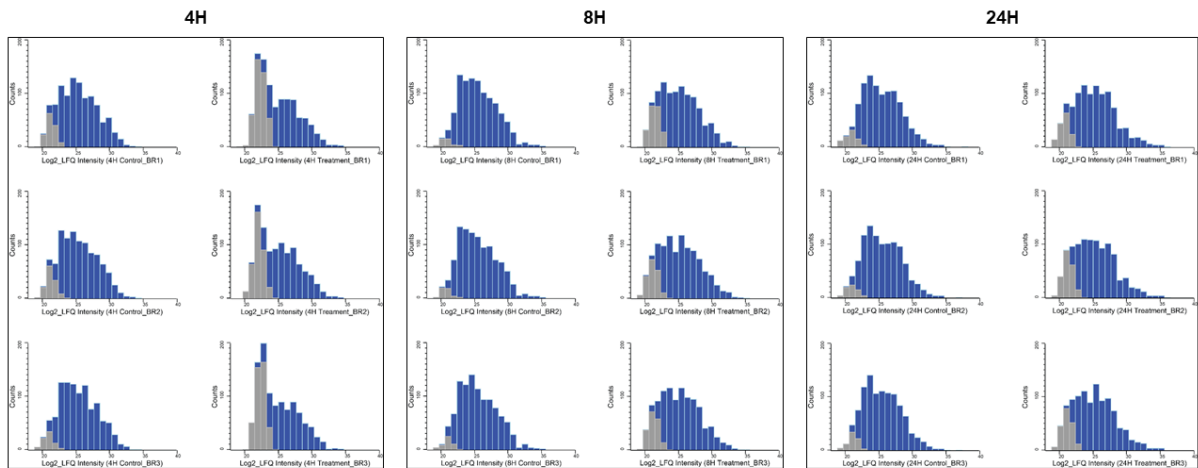
Supplementary figures S1 to S3.



**Figure S1** SEM images depicting time dependent *S. aureus* wrapping/trapping effect of GO.



**Figure S2** Scatter plots depicting correlation between biological replicates (pearson correlation coefficient  $\geq 0.94$ ), reflecting a high degree of reproducibility.



**Figure S3** Histogram depicting distribution of quantified proteins for each condition (control and GO treatment) and for each time point (4 h, 8 h, 24 h). Observed values are colored in blue, imputed values are colored in grey.