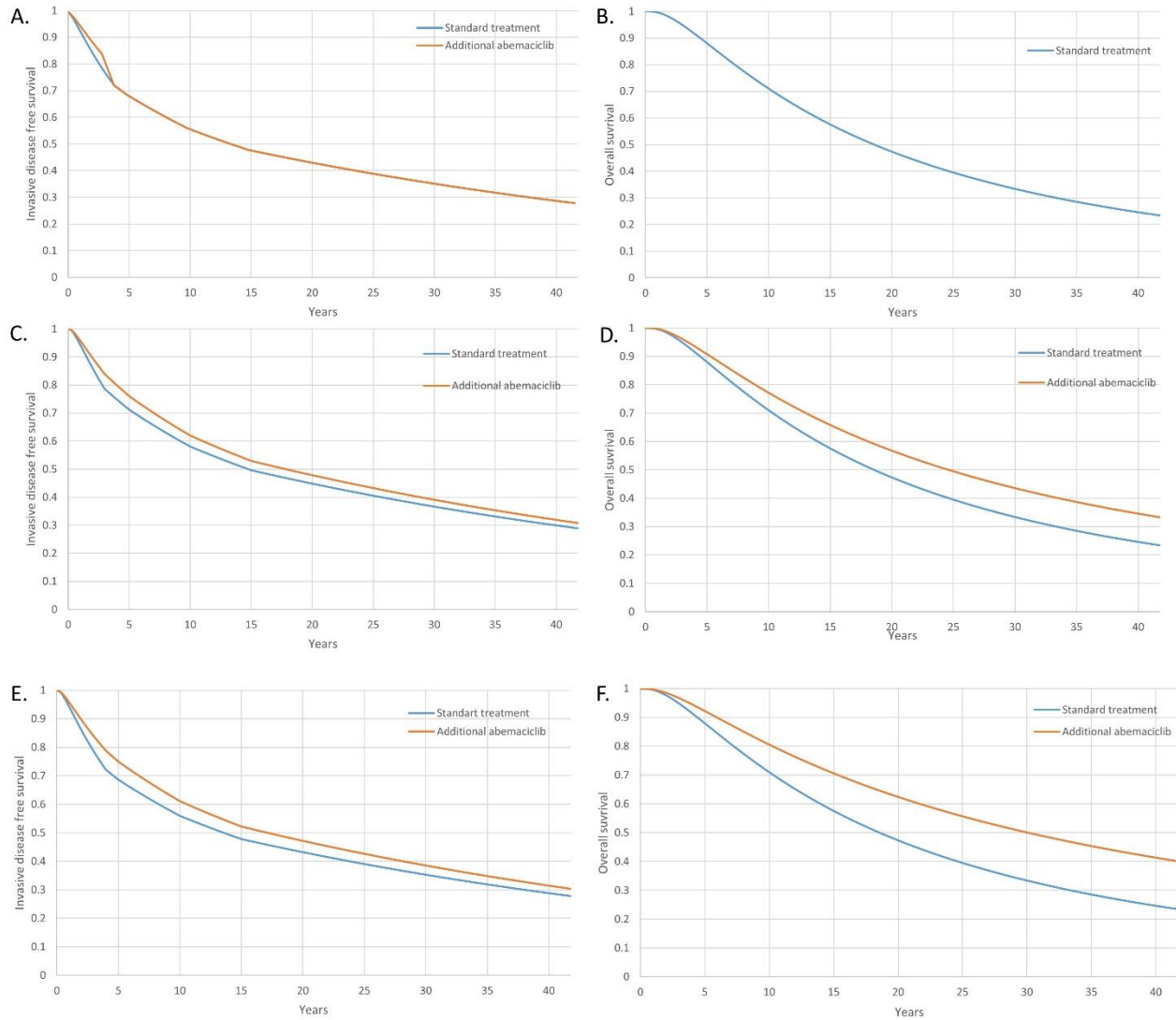


Supplemental figure 1 Extrapolated IDFS and OS curves



A. Extrapolated IDFS curve of additional abemaciclib and standard treatment for the unfavorable treatment effect. B. Extrapolated OS curve of additional abemaciclib and standard treatment for the unfavorable treatment effect. C. Extrapolated IDFS curve of additional abemaciclib and standard treatment for the intermediate treatment effect. D. Extrapolated OS curve of additional abemaciclib and standard treatment for the intermediate treatment effect. E. Extrapolated IDFS curve of additional abemaciclib and standard treatment for the favorable treatment effect. F. Extrapolated OS curve of additional abemaciclib and standard treatment for the favorable treatment effect.

Abbreviations: IDFS, invasive disease free survival; OS, overall survival

Supplemental table 1 Costs, effectiveness and incremental cost-effectiveness for the MRD-based strategy, intermediate effect scenario, with incorporated the risk that MRD was not detected before the presence of recurrent disease

	Standard treatment	MRD-based, intermediate effect scenario, risk MRD not detected
Costs		
<i>Recurrence Free</i>		
Drug acquisition costs	€1,706	€21,554
Healthcare resource use costs	€1,200	€1,919
Genetic testing & MRD detection		€1,785
Adverse event medical costs	€30	€335
Societal costs	€6,936	€8,312
Total recurrence free	€9,872	€33,905
<i>Recurrent disease</i>		
Medical costs	€185,820	€143,456
Societal costs	€3,237	€2,822
Total recurrent disease	€189,057	€146,278
Total intervention costs	€198,929	€180,184
Effectiveness		
LY recurrence free	12.55	15.21
LY recurrent disease	6.62	5.45
Total life years	19.16	20.66
QALY recurrence free	10.92	13.23
QALY recurrent disease	4.90	4.03
Total QALY	15.81	17.26
Incremental cost-effectiveness		
Incremental costs (€)		-€18,745
Incremental effects (LY)		1.50
Incremental effects (QALYs)		1.45
Incremental cost per life-year gained (€/LY)	NA	dominates
Incremental cost per QALY gained (€/QALY)	NA	dominates

Abbreviations: MRD, minimal residual disease; LY, life years; QALY, Quality adjusted life years ; NA, not applicable