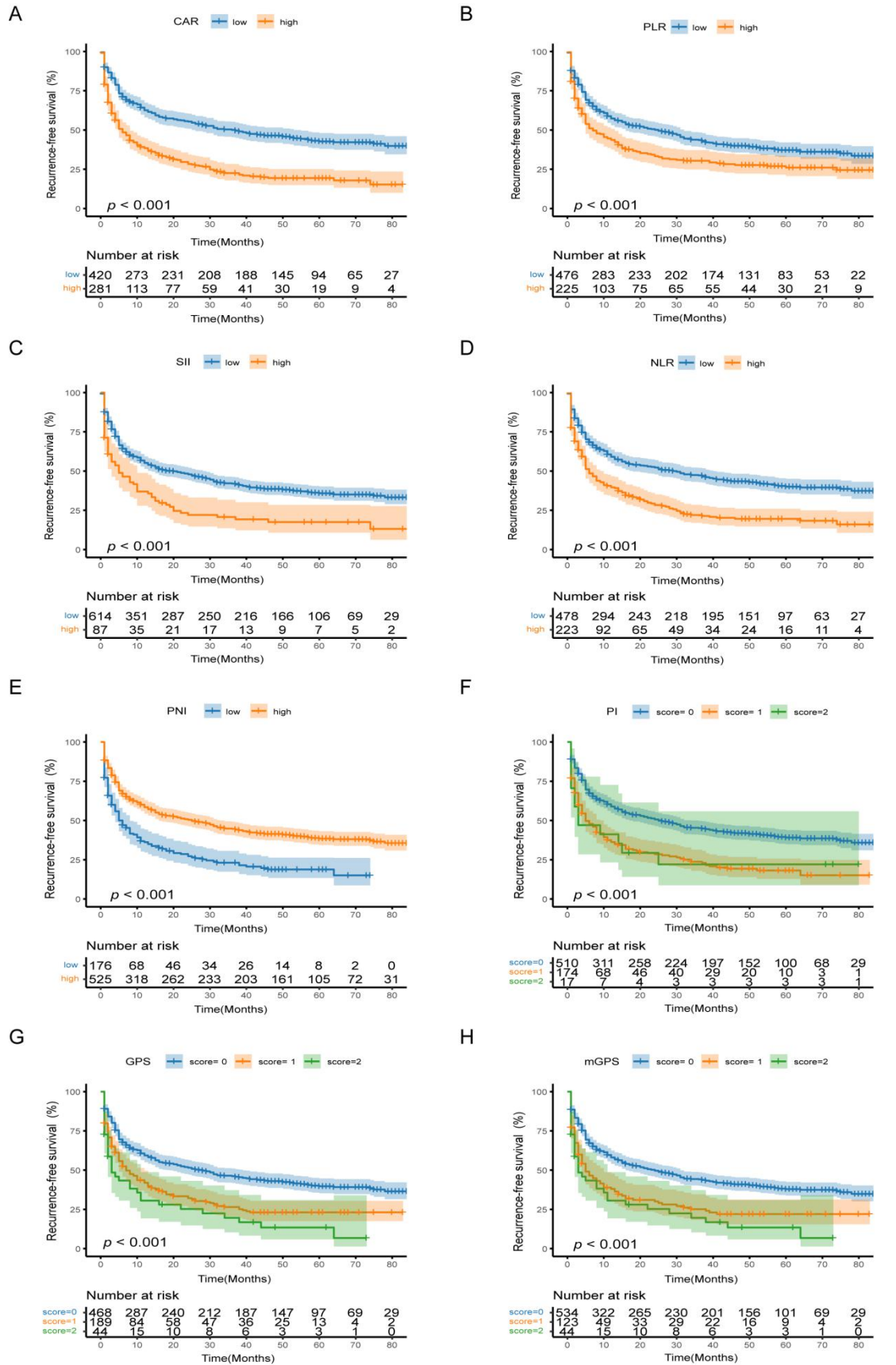


Supplemental Figure 2 Receiver operating characteristic curves of following indices for disease-free survival in patients with hepatocellular carcinoma: **(A)** IINS, **(B)** IBI, **(C)** CAR, **(D)** PLR, **(E)** SII, **(F)** NLR, **(G)** PNI, **(H)** PI, **(I)** GPS, and **(J)** mGPS.

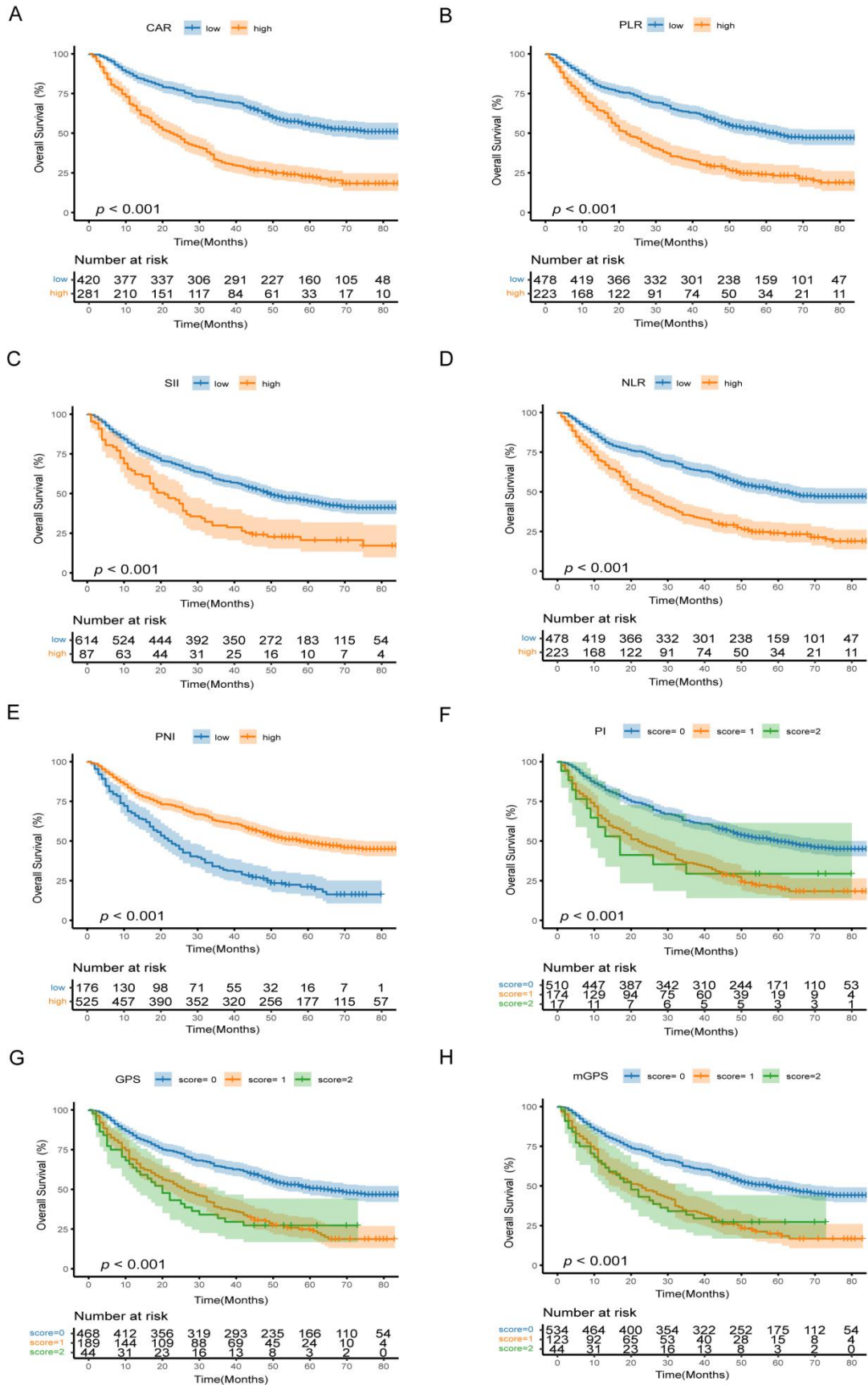
Abbreviations: IINS, Inflammation-immunity-nutrition score; IBI, Inflammatory burden index; CAR, C-reactive protein/albumin ratio; PLR, platelet-lymphocyte ratio; SII, systemic immune inflammation index; NLR, neutrophil-to-lymphocyte ratio; PNI, prognostic nutritional index; PI, prognostic index; GPS, Glasgow Prognostic Score; mGPS, modified Glasgow Prognostic Score; ROC, receiver operating characteristic curves; AUC, area under the curve; HCC, hepatocellular carcinoma; DFS, disease-free survival



Supplemental Figure 3 Kaplan–Meier DFS curves of (A) CAR, (B) PLR, (C) SII, (D) NLR,

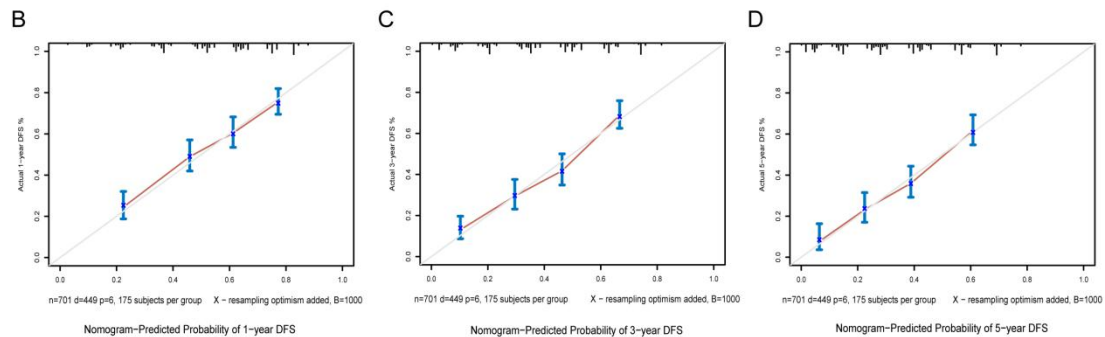
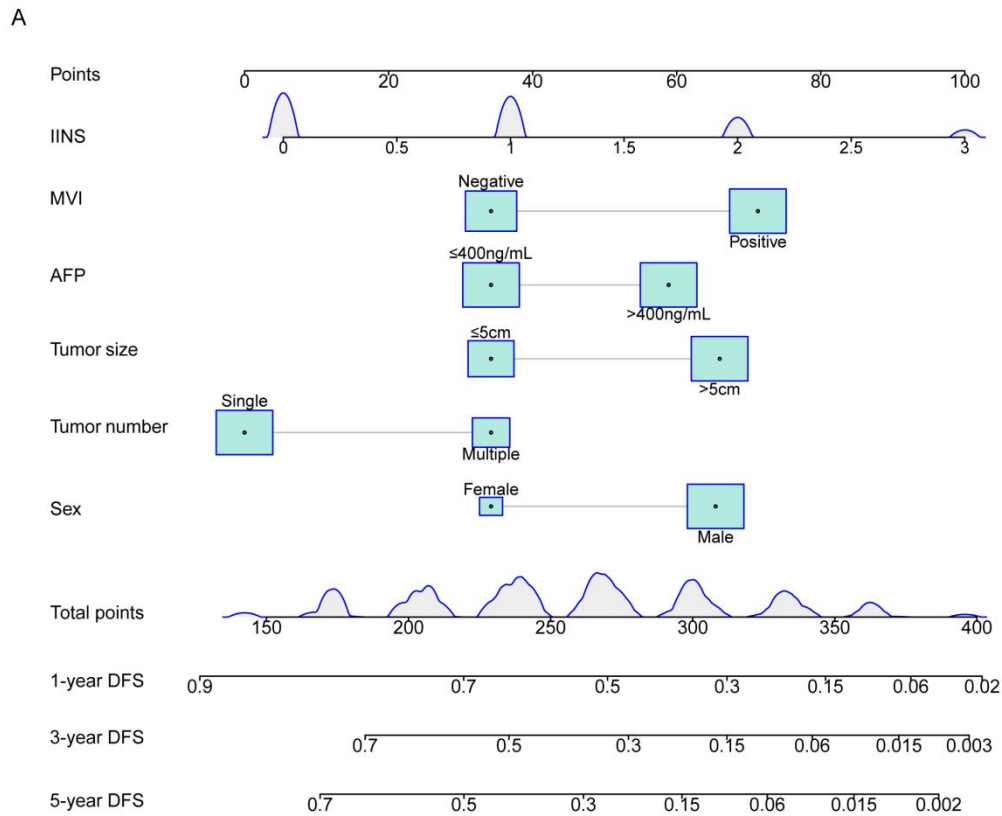
(E) PNI, **(F)** PI, **(G)** GPS and **(H)** mGPS.

Abbreviations: CAR, C-reactive protein/albumin ratio; PLR, platelet- lymphocyte ratio; SII, systemic immune inflammation index; NLR, neutrophil-to-lymphocyte ratio; PNI, prognostic nutritional index; PI, prognostic index; GPS, Glasgow Prognostic Score; mGPS, modified Glasgow Prognostic Score; DFS, disease-free survival



Supplemental Figure 4 Kaplan–Meier OS curves of (A) CAR, (B) PLR, (C) SII, (D) NLR, (E) PNI, (F) PI, (G) GPS and (H) mGPS.

Abbreviations: CAR, C-reactive protein/albumin ratio; PLR, platelet- lymphocyte ratio; SII, systemic immune inflammation index; NLR, neutrophil-to-lymphocyte ratio; PNI, prognostic nutritional index; PI, prognostic index; GPS, Glasgow Prognostic Score; mGPS, modified Glasgow Prognostic Score; OS, overall survival

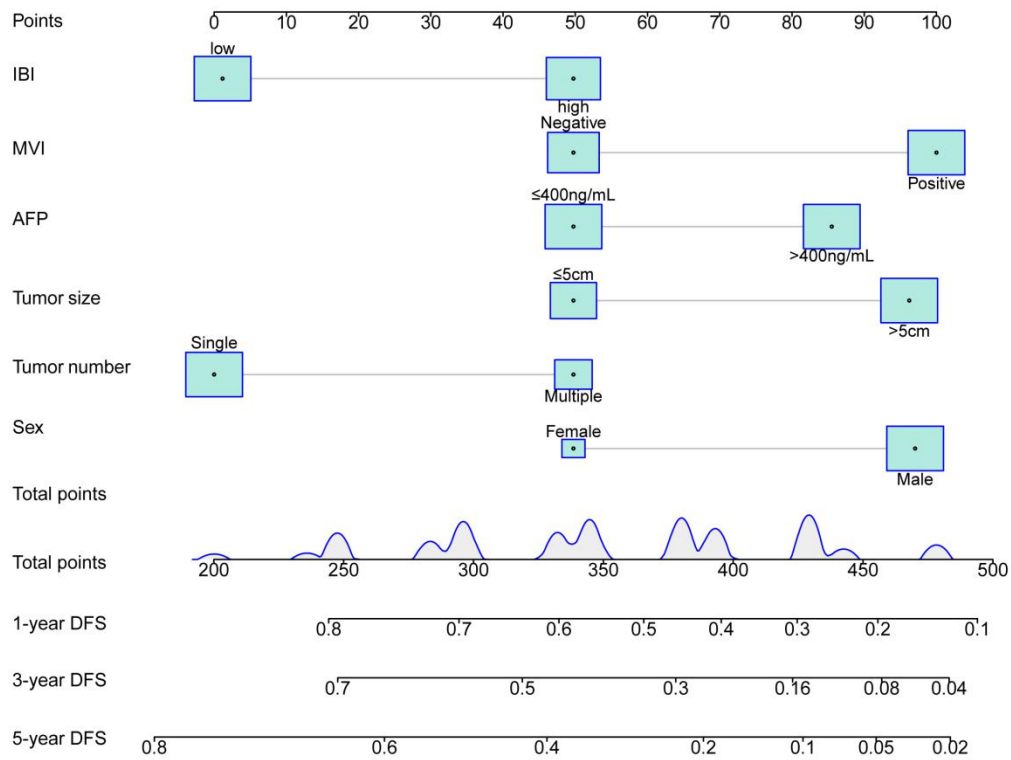


Supplemental Figure 5 Model 1 for predicting DFS of HCC patients after hepatectomy. **(A)** Nomogram of the model. **(B-D)** Calibration curves for **(B)** 1 year, **(C)** 3 years and **(D)** 5 years DFS.

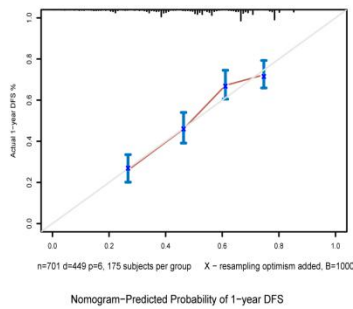
Note: Model 1, prognostic model based on IINS

Abbreviations: IINS, Inflammation-immunity-nutrition score; MVI, microvascular invasion; AFP, alpha-fetoprotein; BCLC, Barcelona Clinic Liver Cancer, DFS, disease-free survival

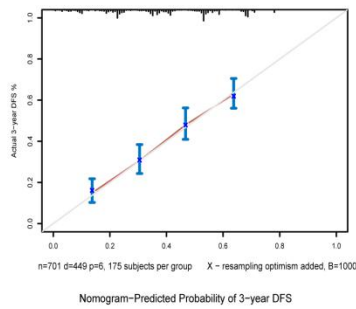
A



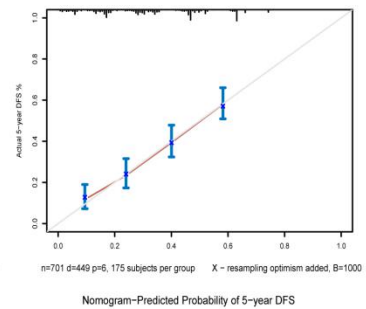
B



C



D

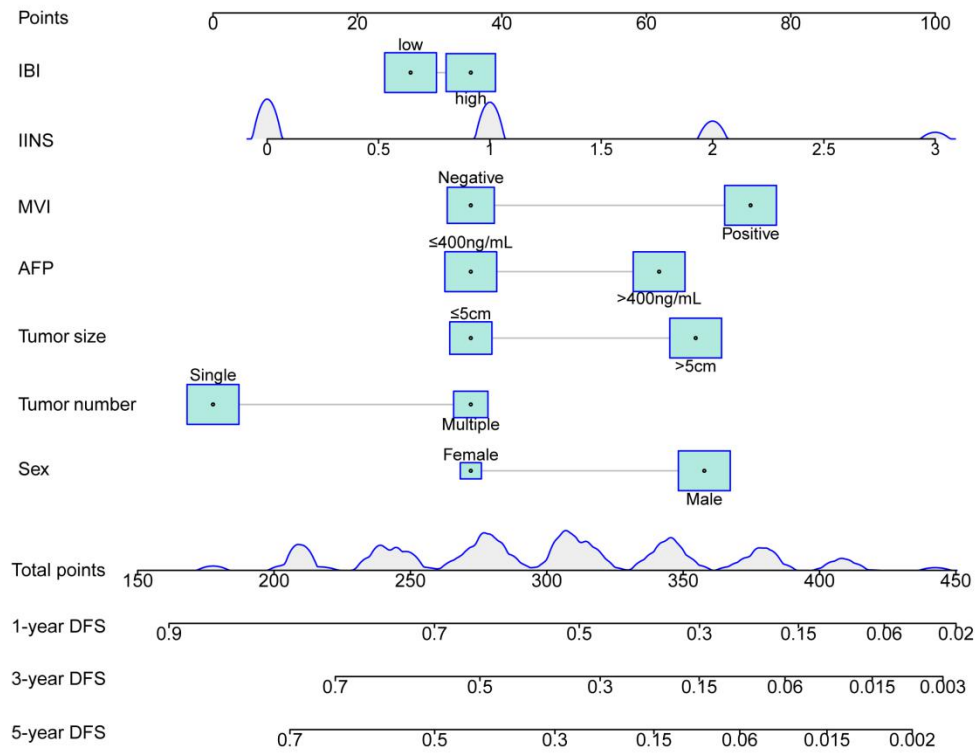


Supplemental Figure 6 Model 2 for predicting DFS of HCC patients after hepatectomy. (A) Nomogram of the model. (B-D) Calibration curves for (B) 1 year, (C) 3 years and (D) 5 years DFS

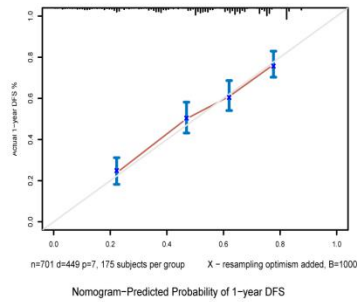
Note: Model 2, prognostic model based on IBI

Abbreviations: IBI, Inflammation-immunity-nutrition score; MVI, microvascular invasion; AFP, alpha-fetoprotein; BCLC, Barcelona Clinic Liver Cancer; DFS, disease-free survival

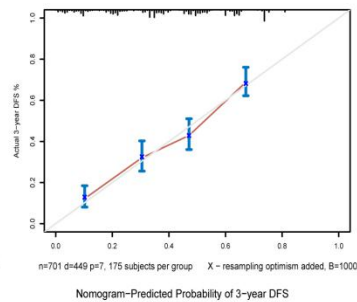
A



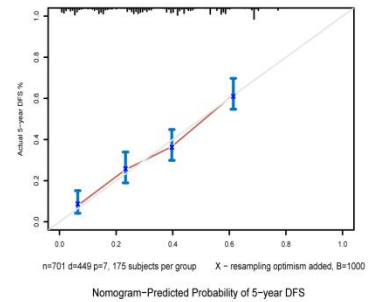
B



C



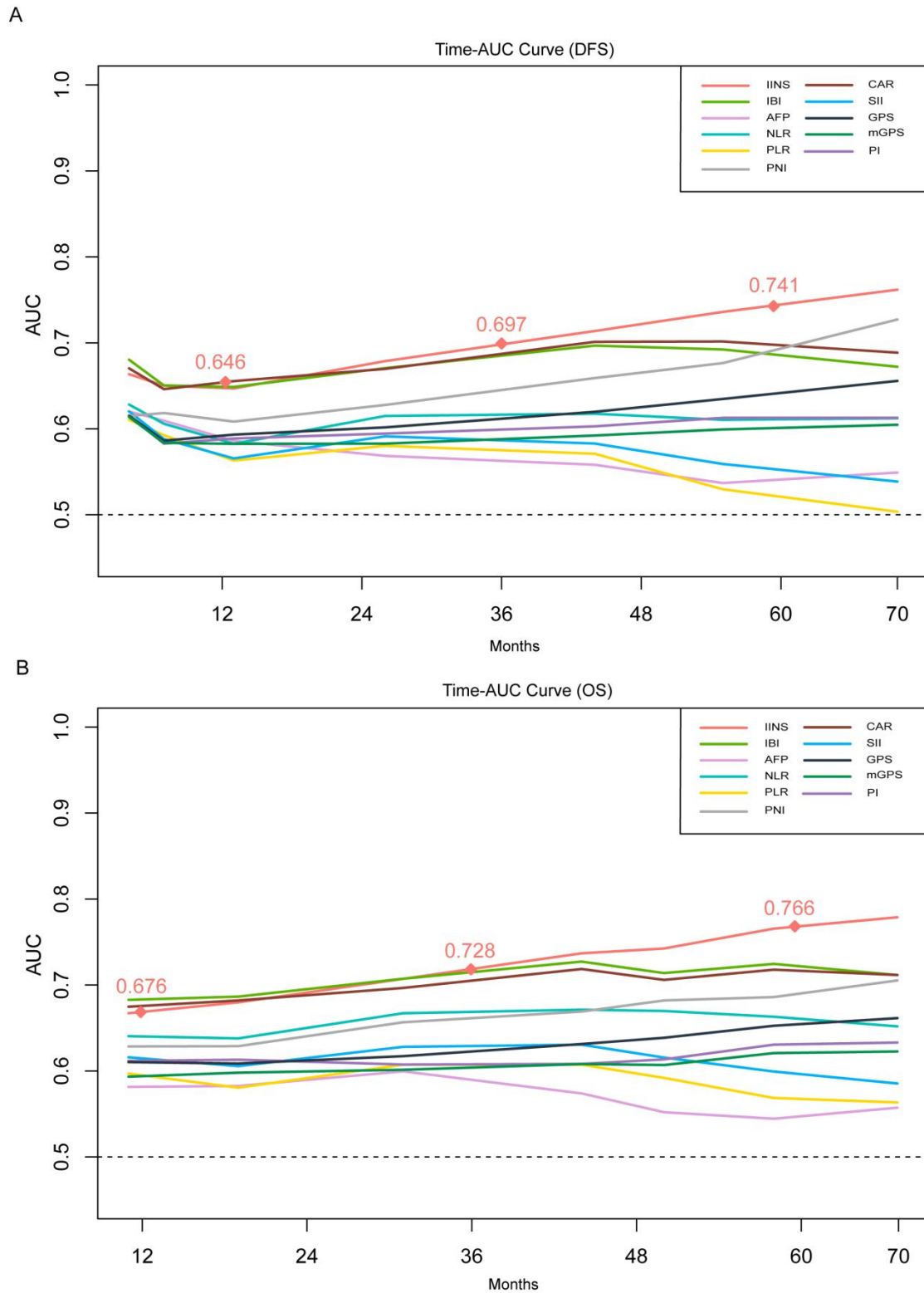
D



Supplemental Figure 7 Model 3 for predicting DFS of HCC patients after hepatectomy. (A) Nomogram of the model. (B-D) Calibration curves for (B) 1 year, (C) 3 years and (D) 5 years DFS.

Note: Model 3, prognostic model based on IINS and IBI

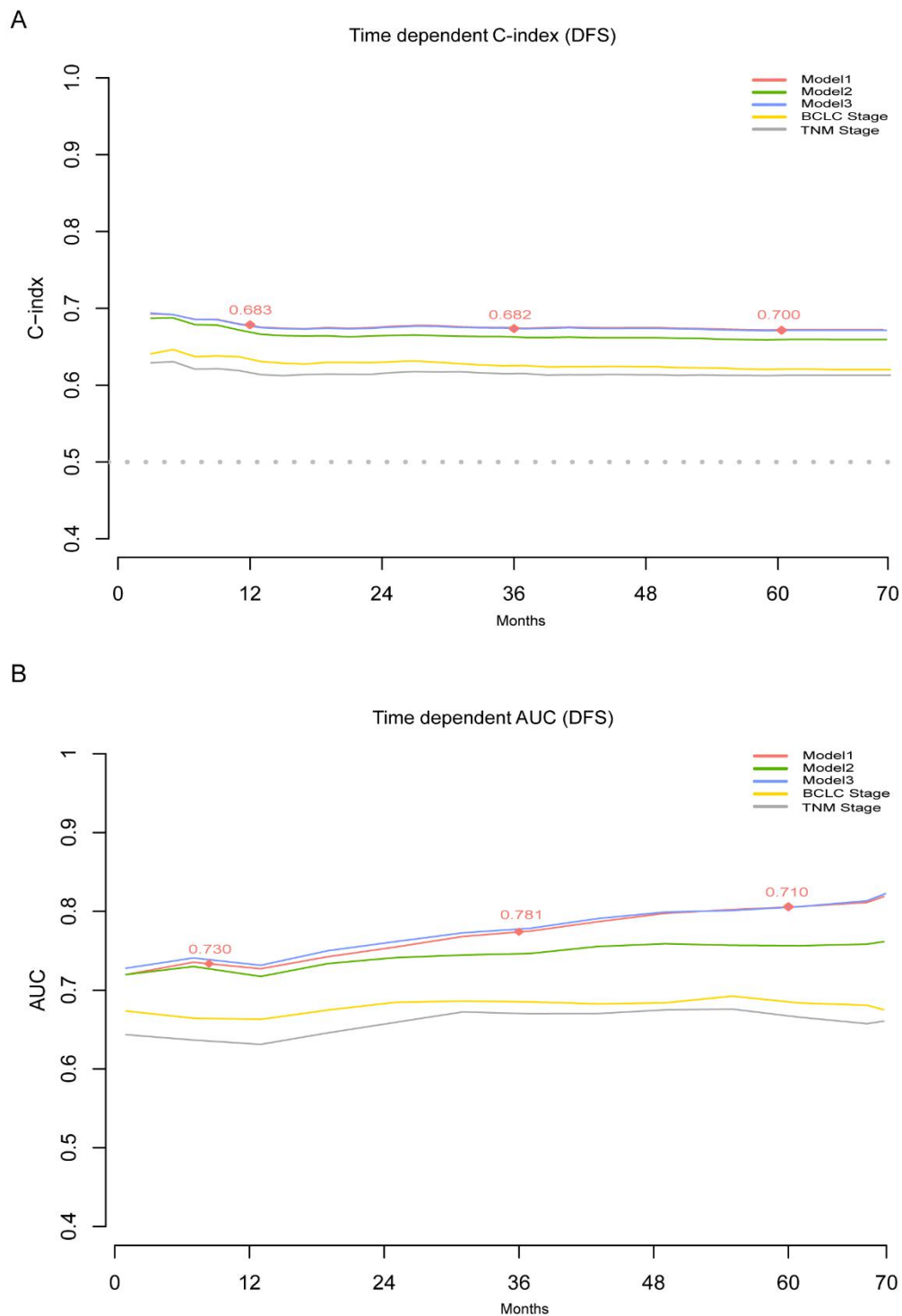
Abbreviations: IBI, Inflammation-immunity-nutrition score; IINS Inflammation- immunity -nutrition score; MVI, microvascular invasion; AFP, alpha-fetoprotein; BCLC, Barcelona Clinic Liver Cancer; DFS, disease-free survival



Supplemental Figure 8 Time-dependent AUCs for predicting (A) DFS and (B) OS of inflammatory and nutritional indicators. The red nodes represent AUC values for 1 year, 3 years and 5 years respectively.

Abbreviations: AUCs area under the curves; IBI, Inflammation-immunity-nutrition score; IINS Inflammation-immunity-nutrition score; AFP, alpha-fetoprotein; NLR, neutrophil-to-lymphocyte ratio; CAR C-reactive protein/albumin ratio; PLR, platelet-lymphocyte ratio; PNI, prognostic nutritional index; PI, prognostic index; SII, systemic immune inflammation index; GPS, Glasgow Prognostic Score; mGPS, modified

Glasgow Prognostic Score; DFS, disease-free survival; OS, overall survival



Supplemental Figure 9 Comparison of models and traditional clinical staging systems for predicting prognosis. (A) Time-dependent C-index (B) Time-dependent AUCs. The red nodes represent C-index or AUC values of Model 1 for 1 year, 3 years and 5 years respectively.

Note: Model 1, prognostic model based on IINS; Model 2 prognostic model based on IBI;

Model 3, prognostic model based on IINS and IBI

Abbreviations: BCLC, Barcelona Clinic Liver Cancer; AJCC TNM, American Joint Committee on Cancer/Tumor-Node-Metastasis; AUC, area under the time-dependent receiver operating characteristic curve; IINS Inflammation-immunity-nutrition score; IBI, Inflammation-immunity-nutrition score; DFS, disease-free survival.

Table S1 Inflammatory and nutritional indicator scores

Indicators	Score
PI	
CRP \leq 10 mg/L and WBC count \leq 10 \times 10 ⁹ /L	0
CRP \leq 10 mg/L and WBC count $>$ 10 \times 10 ⁹ /L	1
CRP $>$ 10 mg/L and WBC count \leq 10 \times 10 ⁹ /L	1
CRP $>$ 10 mg/L and WBC count $>$ 10 \times 10 ⁹ /L	2
GPS	
CRP \leq 10 mg/L and albumin \geq 35 g/L	0
CRP \leq 10 mg/L and albumin $<$ 35 g/L	1
CRP $>$ 10 mg/L and albumin \geq 35 g/L	1
CRP $>$ 10 mg/L and albumin $<$ 35 g/L	2
mGPS	
CRP \leq 10 mg/L and albumin \geq 35 g/L	0
CRP \leq 10 mg/L and albumin $<$ 35 g/L	0
CRP $>$ 10 mg/L and albumin \geq 35 g/L	1
CRP $>$ 10 mg/L and albumin $<$ 35 g/L	2

Abbreviations: PI, Prognostic Index; GPS, Glasgow Prognostic Score; mGPS Modified Glasgow Prognostic Score; CRP, C-reactive protein; WBC, white blood cell.

Table S2 Comparison of inflammatory indicators prognostic efficacy for disease-free survival and overall survival

Variable	DFS						OS					
	1-year		3-year		5-year		1-year		3-year		5-year	
	AUC	95CI%	AUC	95CI%	AUC	95CI%	AUC	95CI%	AUC	95CI%	AUC	95CI%
IINS	0.646	0.607-0.685	0.697	0.661-0.734	0.741	0.700-0.782	0.676	0.629-0.723	0.728	0.693-0.764	0.766	0.730-0.802
IBI	0.650	0.608-0.691	0.684	0.644-0.726	0.682	0.629-0.735	0.691	0.643-0.739	0.725	0.687-0.763	0.727	0.684-0.769
AFP	0.590	0.553-0.628	0.566	0.526-0.605	0.548	0.495-0.601	0.584	0.539-0.629	0.579	0.542-0.616	0.557	0.513-0.601
NLR	0.586	0.542-0.629	0.629	0.586-0.671	0.613	0.560-0.667	0.638	0.584-0.688	0.668	0.628-0.709	0.663	0.518-0.592
PLR	0.563	0.520-0.607	0.574	0.530-0.618	0.512	0.457-0.568	0.588	0.536-0.641	0.608	0.566-0.650	0.565	0.517-0.615
CAR	0.655	0.613-0.696	0.683	0.642-0.725	0.690	0.637-0.743	0.686	0.638-0.735	0.716	0.678-0.755	0.719	0.676-0.762
SII	0.566	0.523-0.610	0.592	0.548-0.635	0.546	0.489-0.602	0.615	0.563-0.667	0.629	0.587-0.671	0.600	0.552-0.648
PNI	0.610	0.567-0.653	0.638	0.595-0.680	0.682	0.629-0.734	0.621	0.569-0.673	0.663	0.623-0.703	0.683	0.637-0.727
PI	0.590	0.557-0.624	0.594	0.562-0.627	0.607	0.569-0.646	0.625	0.580-0.670	0.610	0.576-0.643	0.631	0.598-0.664
GPS	0.592	0.557-0.628	0.608	0.574-0.643	0.630	0.590-0.670	0.618	0.571-0.664	0.626	0.591-0.661	0.651	0.616-0.686
mGPS	0.585	0.553-0.617	0.584	0.553-0.614	0.592	0.557-0.628	0.608	0.564-0.653	0.606	0.574-0.638	0.619	0.588-0.650

Abbreviations: IINS, inflammation -immunity-nutrition score; IBI, Inflammatory burden index; AFP, alpha-fetoprotein; NLR, neutrophil-to-lymphocyte ratio; PLR, platelet- lymphocyte ratio; CAR, C-reactive protein/albumin ratio; SII, systemic immune inflammation index; PNI, prognostic nutritional index; PI, prognostic index; GPS, Glasgow Prognostic Score; mGPS, modified Glasgow Prognostic Score

Table S3 Comparison of models with conventional clinical staging systems to predict disease-free survival and overall survival

Variable	DFS						OS					
	1-year		3-year		5-year		1-year		3-year		5-year	
	C-index	AUC	C-index	AUC	C-index	AUC	C-index	AUC	C-index	AUC	C-index	AUC
Model1	0.683	0.730	0.682	0.781	0.700	0.810	0.728	0.750	0.729	0.794	0.712	0.804
Model2	0.675	0.720	0.670	0.754	0.666	0.767	0.723	0.745	0.700	0.748	0.682	0.725
Model3	0.683	0.729	0.682	0.780	0.679	0.806	0.727	0.749	0.727	0.792	0.710	0.802
BCLC Stage	0.639	0.666	0.631	0.685	0.625	0.688	0.662	0.678	0.657	0.699	0.646	0.703
AJCC TNM (8th)	0.618	0.635	0.617	0.670	0.615	0.671	0.627	0.635	0.618	0.649	0.611	0.634

Note: Model 1, prognostic model based on IINS; Model 2 prognostic model based on IBI; Model 3, prognostic model based on IINS and IBI

Abbreviations: IINS Inflammation-immunity-nutrition score; IBI, Inflammation-immunity-nutrition score; BCLC, Barcelona Clinic Liver Cancer; AJCC TNM, American Joint Committee on Cancer/Tumor-Node-Metastasis