

Figure 1S: Example of a simple algorithm to differentiate between an orange and an apricot

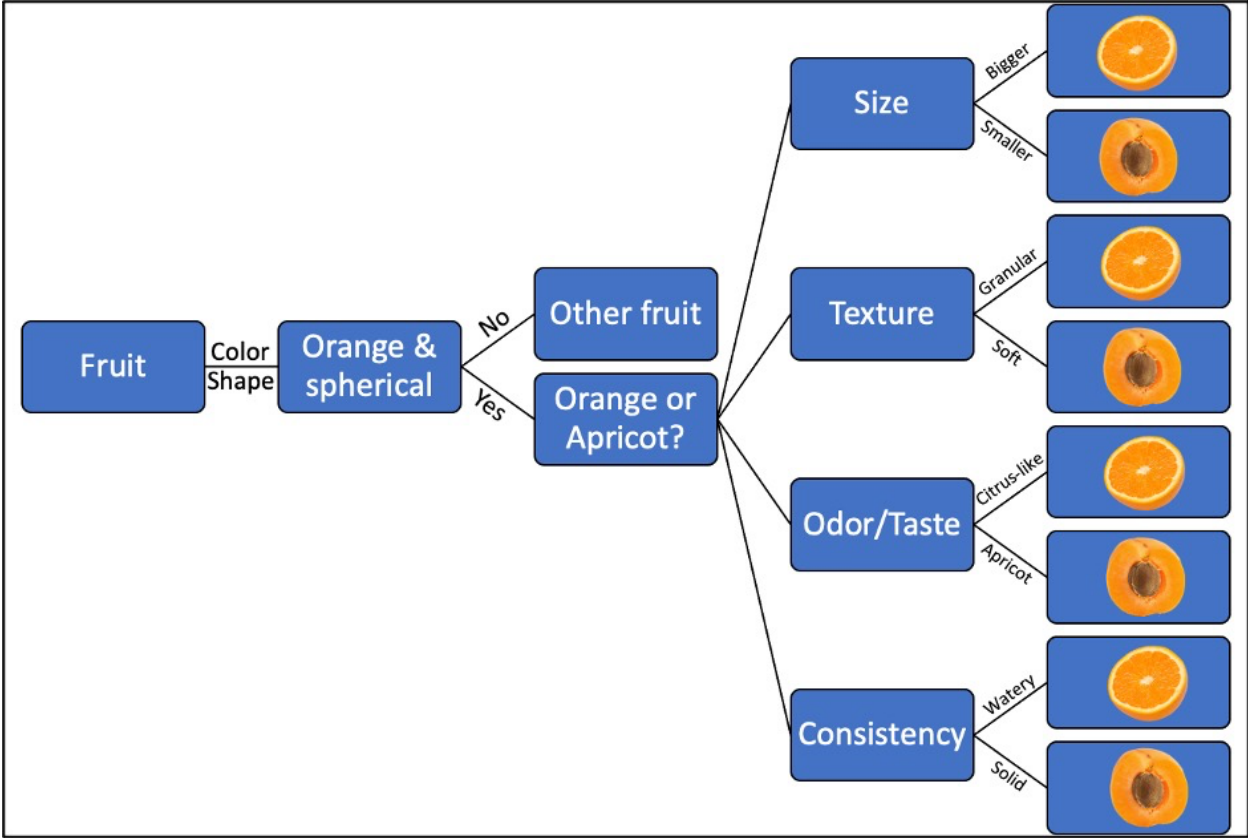
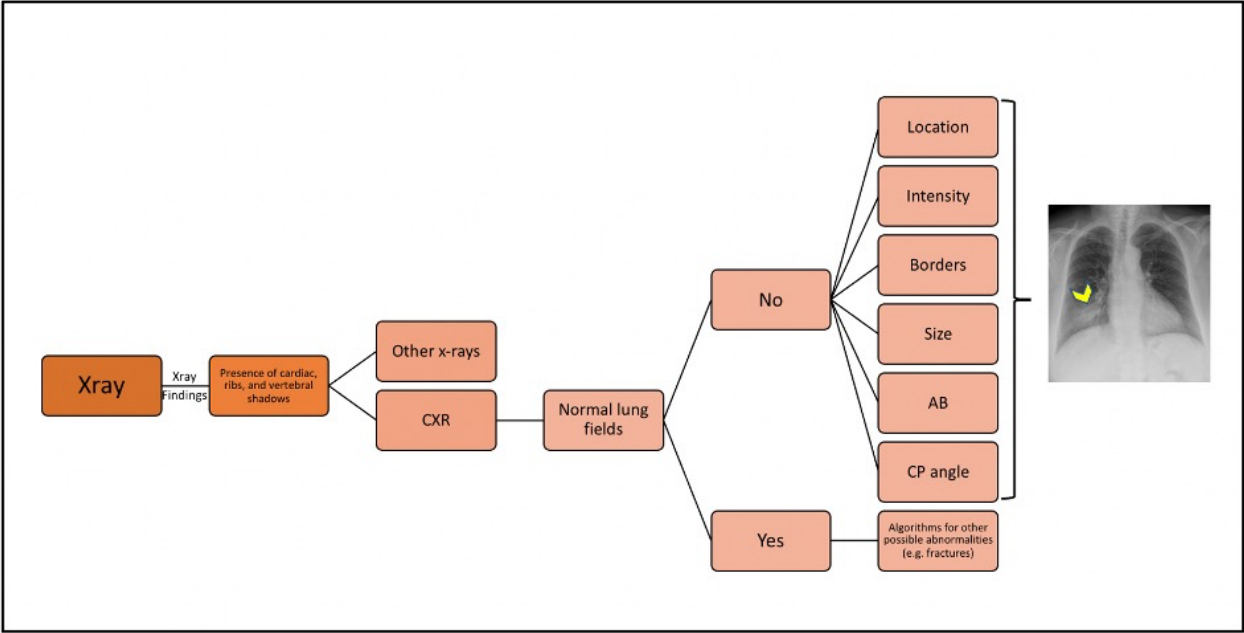


Figure 2S: Suggested algorithm that can help detecting consolidation on chest x-ray



CXR: Chest x-ray; AB: Air bronchogram; CP: Costophrenic

➤ Opacity

Figure 3S: Simple representation of the use of artificial intelligence in various medical specialties

