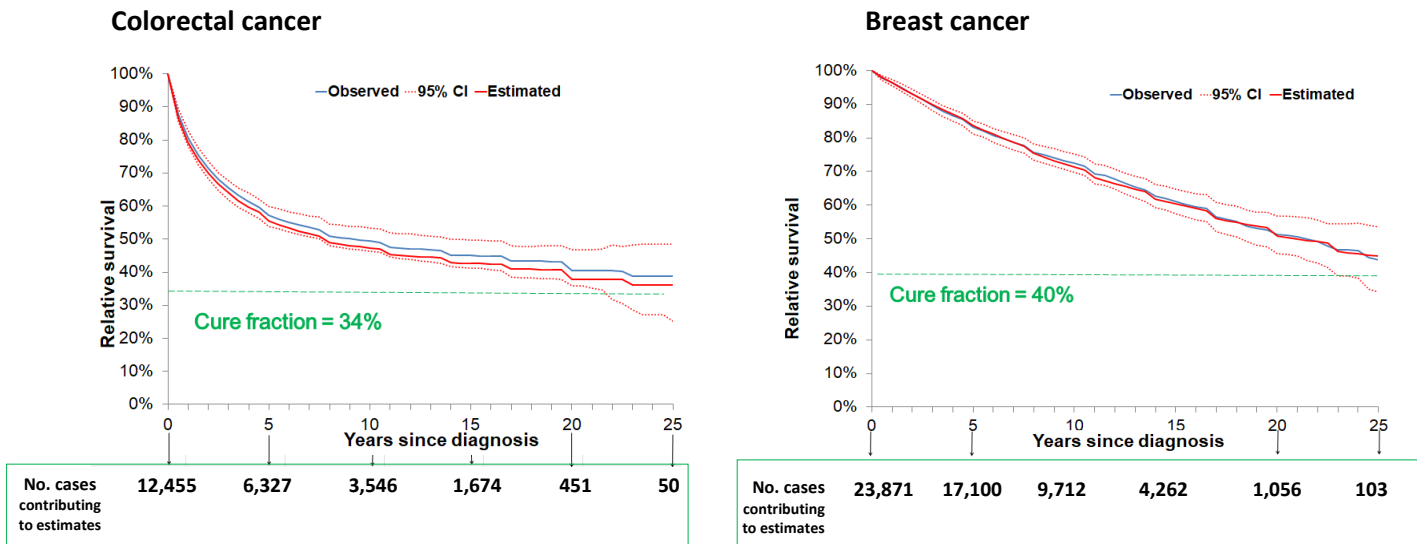
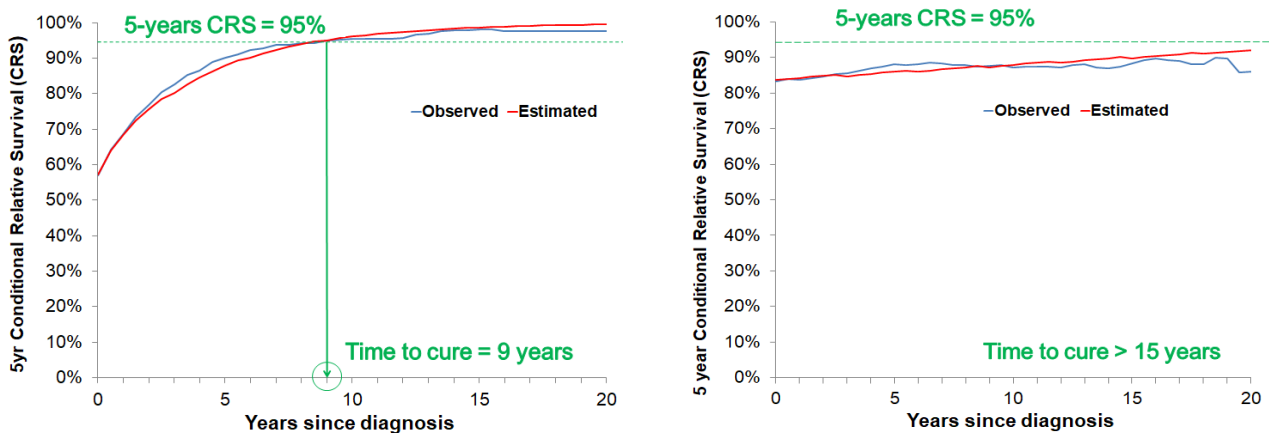


Supplementary Figure 1. Indicators of cancer cure* : cure fraction and time to cure

a. Cure Fraction: Proportion of cancer patients who are expected to reach the same death rates as the general population



b. Time to cure: Years after cancer diagnosis necessary to eliminate or make negligible excess mortality due to cancer



* Examples from Italian cancer patients (1988-1990), diagnosed at age 65-74, and followed for 25 years after diagnosis, adapted from Ref. 11