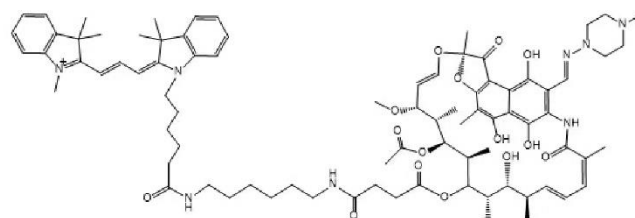


Supplementary figures and figure legends



Rifampicin-CY3

Figure S1. Chemical structure of Rifampicin-CY3.

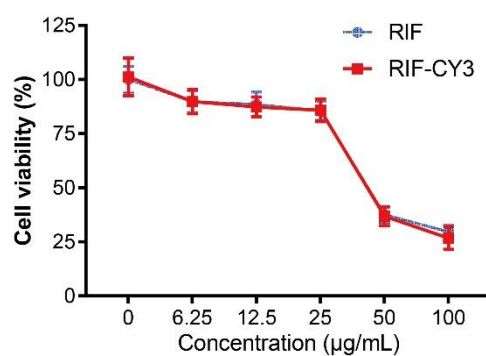


Figure S2. The effect of Rifampicin and Rifampicin-CY3 on the activity of OS cells.

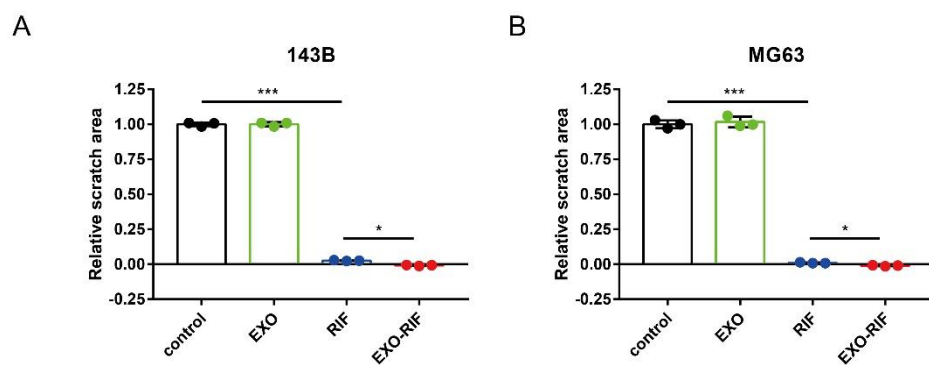


Figure S3. Statistics of cell scratch experiments. * $P < 0.05$, *** $P < 0.001$.

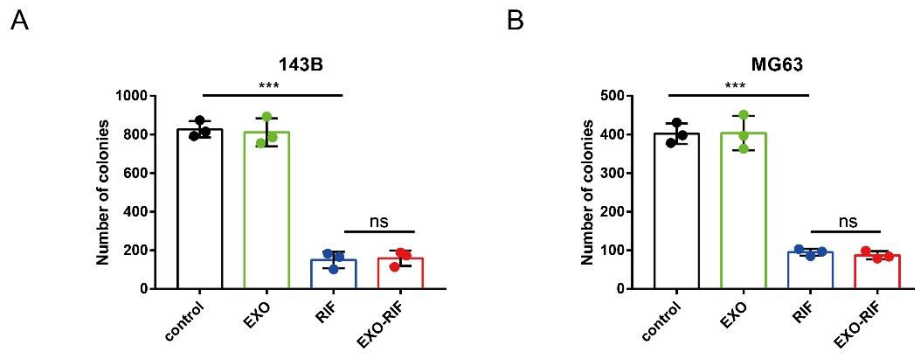


Figure S4. Statistics of cell cloning experiments. * $P < 0.001$.**

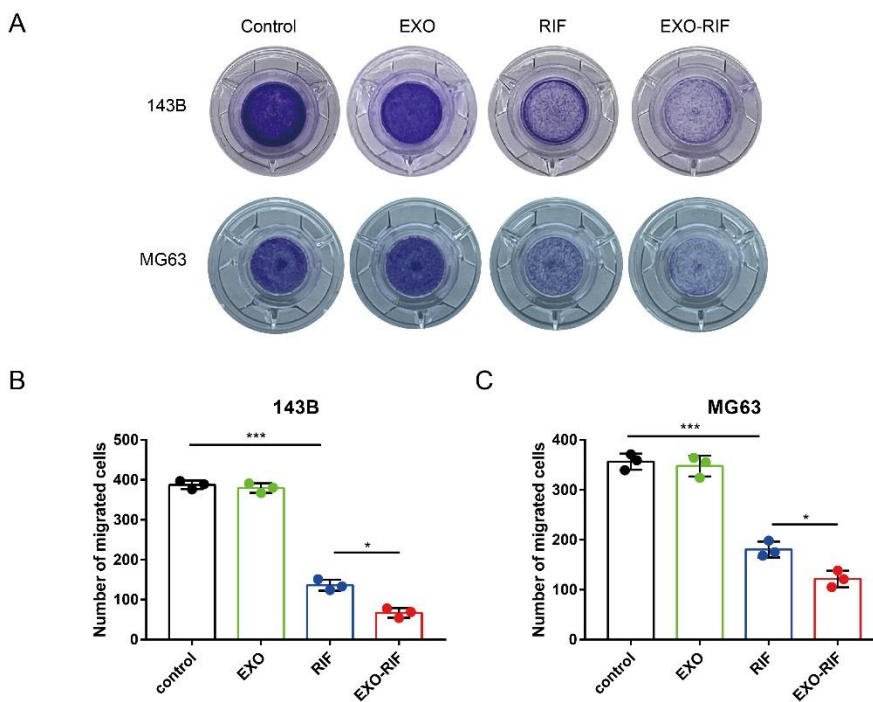


Figure S5. Representative photographs and statistics of cell invasion experiments. * $P < 0.05$, * $P < 0.001$.**

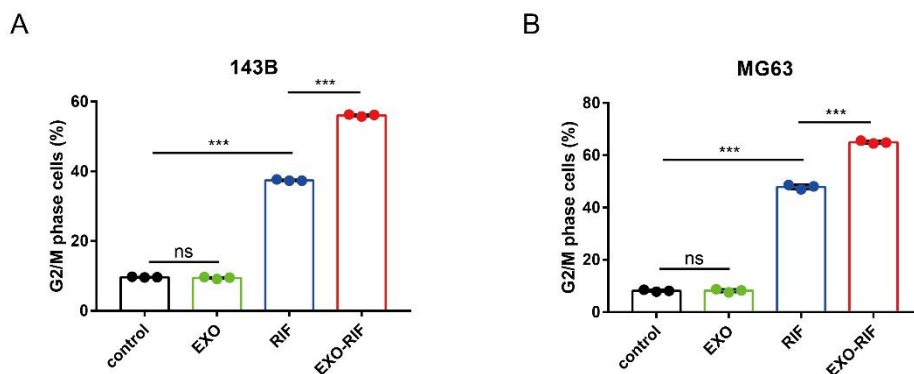


Figure S6. Statistics of the cell cycle at G2/M phase. * $P < 0.001$.**

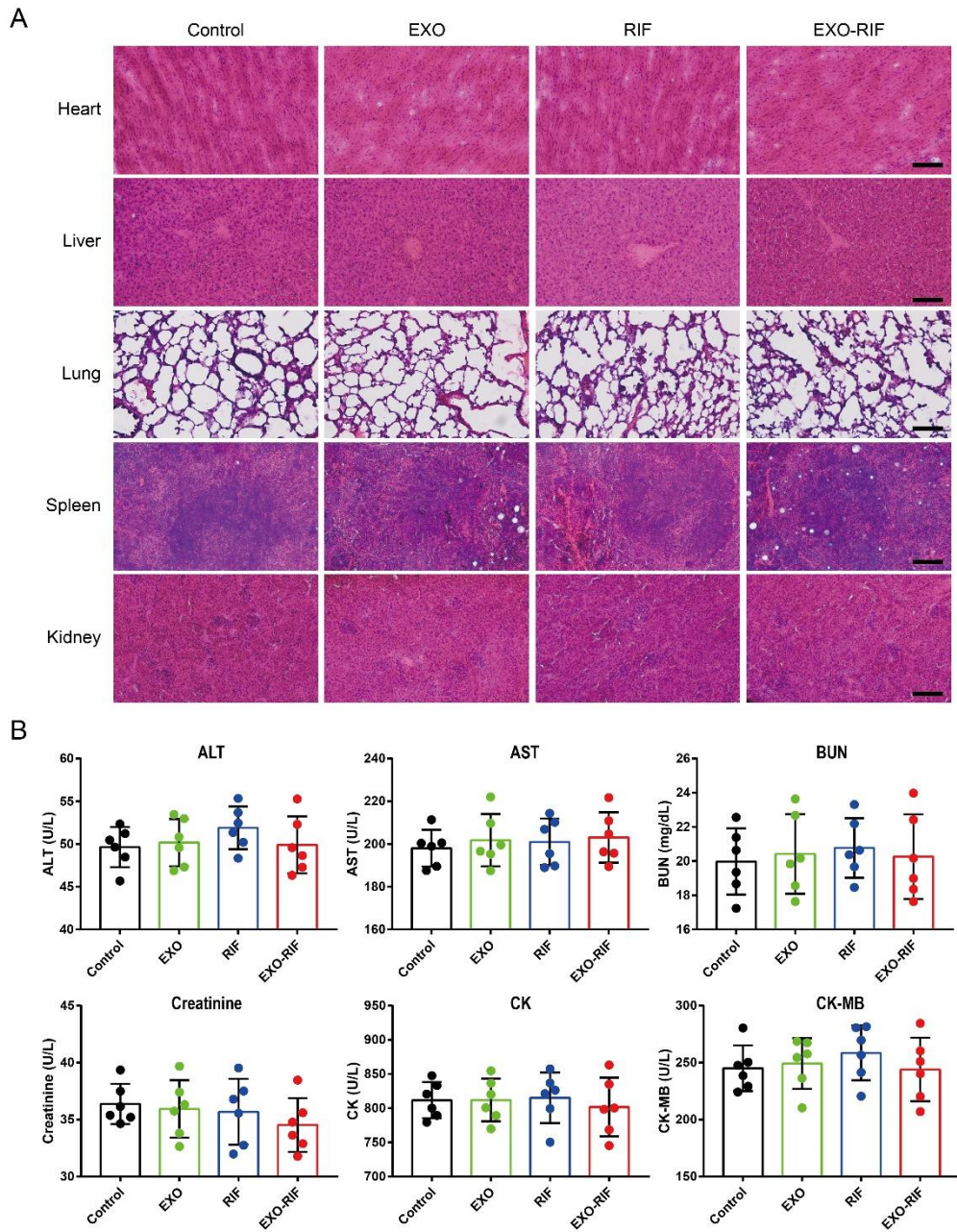


Figure S7. Off-target effects of EXO-RIF. (A) HE staining of heart, liver, spleen, lung and kidney. (B) Liver toxicity test, consisting of alanine transaminase (ALT) and aspartate transaminase (AST) test in the listed groups. Kidney toxicity test, consisting of blood urea nitrogen (BUN) and creatinine (Cr) test. Heart toxicity test, consisting of creatine kinase (CK) and creatine kinase-MB (CK-MB) test. n =6.