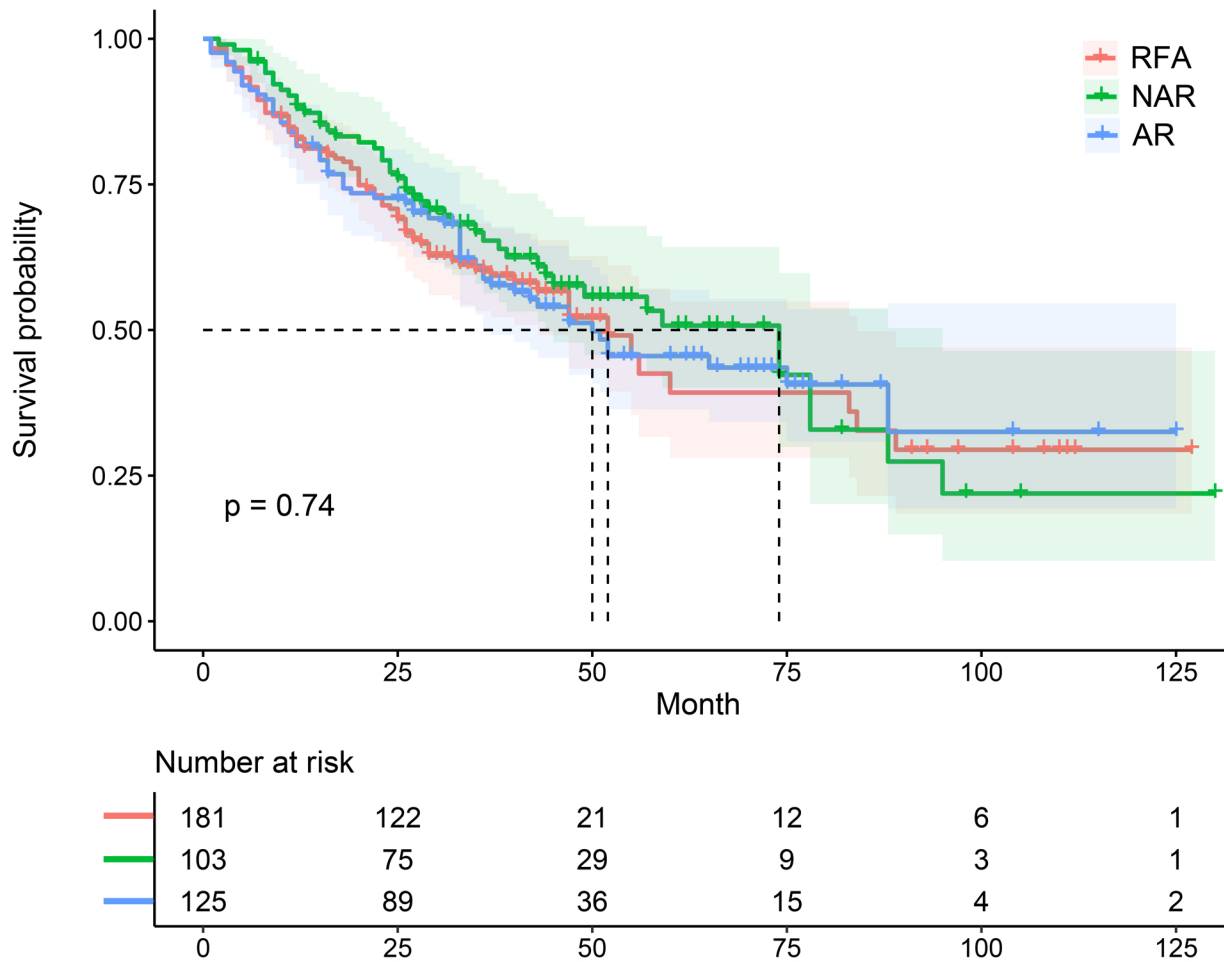


Supplementary Table 1: RFS for the patients grouped by TMS.

Variable	Cut-off value	Case	Media of RFS	1-year RFS	3-year RFS	5-year RFS
TMS	0	142	89%	94.4%	79.9%	68.0%
	1	171	52%	93.0%	60.1%	45.5%
	2	96	23%	68.8%	36.0%	19.0%

Abbreviations: TMS, tumor marker score; RFS, recurrence-free survival.



Supplementary Figure 1: K–M curves of the recurrence-free survival of surgery type.

Abbreviations: RFA, radio frequency ablation; NAR, none-anatomical resection; AR, anatomical resection.