

ICAM1-targeting theranostic nanoparticles for magnetic resonance imaging and therapy of triple-negative breast cancer

Supplementary materials:

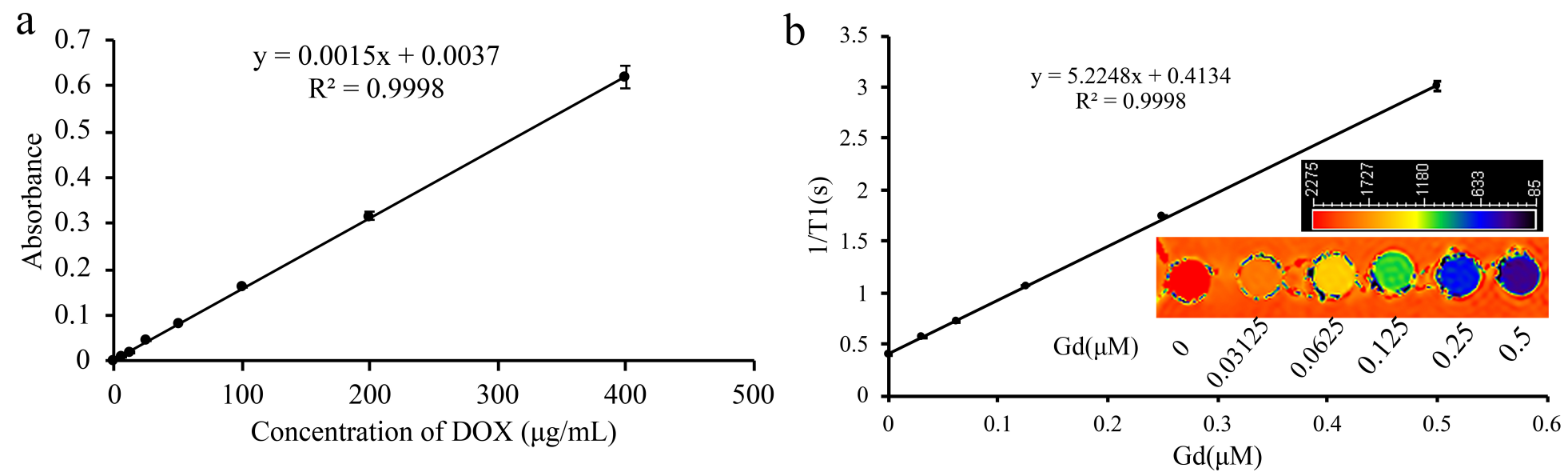


Figure S1 Calibrations of DOX (a) and Gd (b)

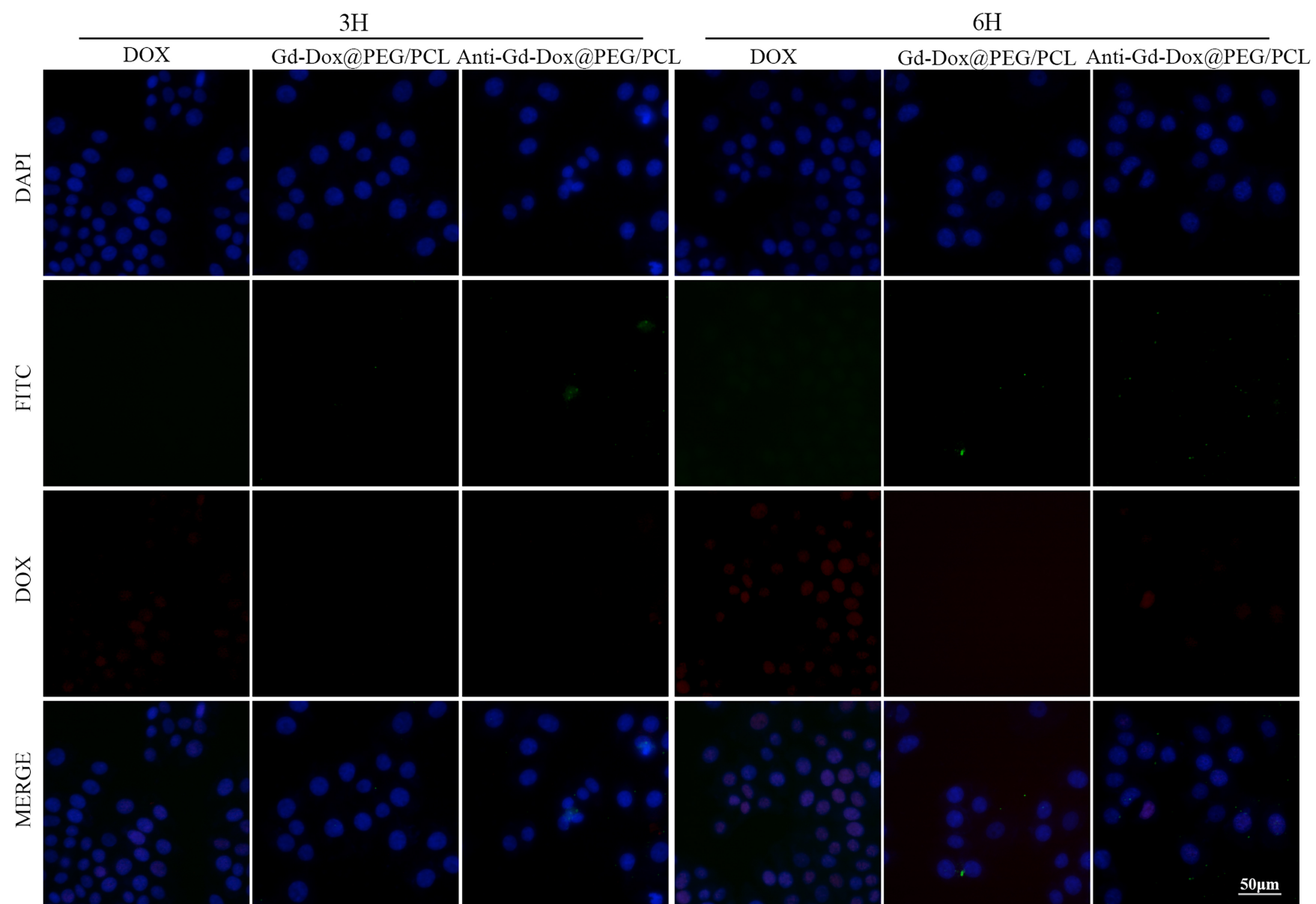


Figure S2 Fluorescence microscope images of MCF7 cells treated with Anti-Gd-Dox@PEG/PCL-FITC, Gd-Dox@PEG/PCL-FITC and DOX for 3 h and 6 h, respectively

Figure S3 Routine blood parameters and serum biochemical parameters. * $p < 0.05$, ** $p < 0.01$, *** $p < 0.001$, **** $p < 0.0001$, in comparison with untreated control. All comparisons were conducted via ANOVA except for CR, Lymph#, Mon#, Gran#, Lymph%, Mon%, Gran%, MCHC, RDW, and PCT, which were not normal distribution and compared with non-parametric test (Kruskal-Wallis test).

Abbreviations in figure S3:

Abbreviations	Meanings
ALT	alanine aminotransferase
AST	aspartate aminotransferase
BUN	blood urea nitrogen
CR	creatinine
Gran#	granulocyte count
Gran%	percentage of granulocyte
HCT	hematocrit
HGB	hemoglobin
Lymph#	lymphocyte count
Lymph%	percentage of lymphocyte
MCH	mean corpuscular hemoglobin concentration
MCHC	mean corpuscular hemoglobin concentration
MCV	mean red blood cell volume
Mon#	monocyte count
Mon%	percentage of monocyte
MPV	mean platelet volume
PCT	platelet hematocrit
PDW	platelet distribution width
PLT	platelet count
RBC	red blood cell count
RDW	coefficient of variation of red blood cell distribution width
TBIL	total bilirubin
UA	urea
WBC	white blood cell count

