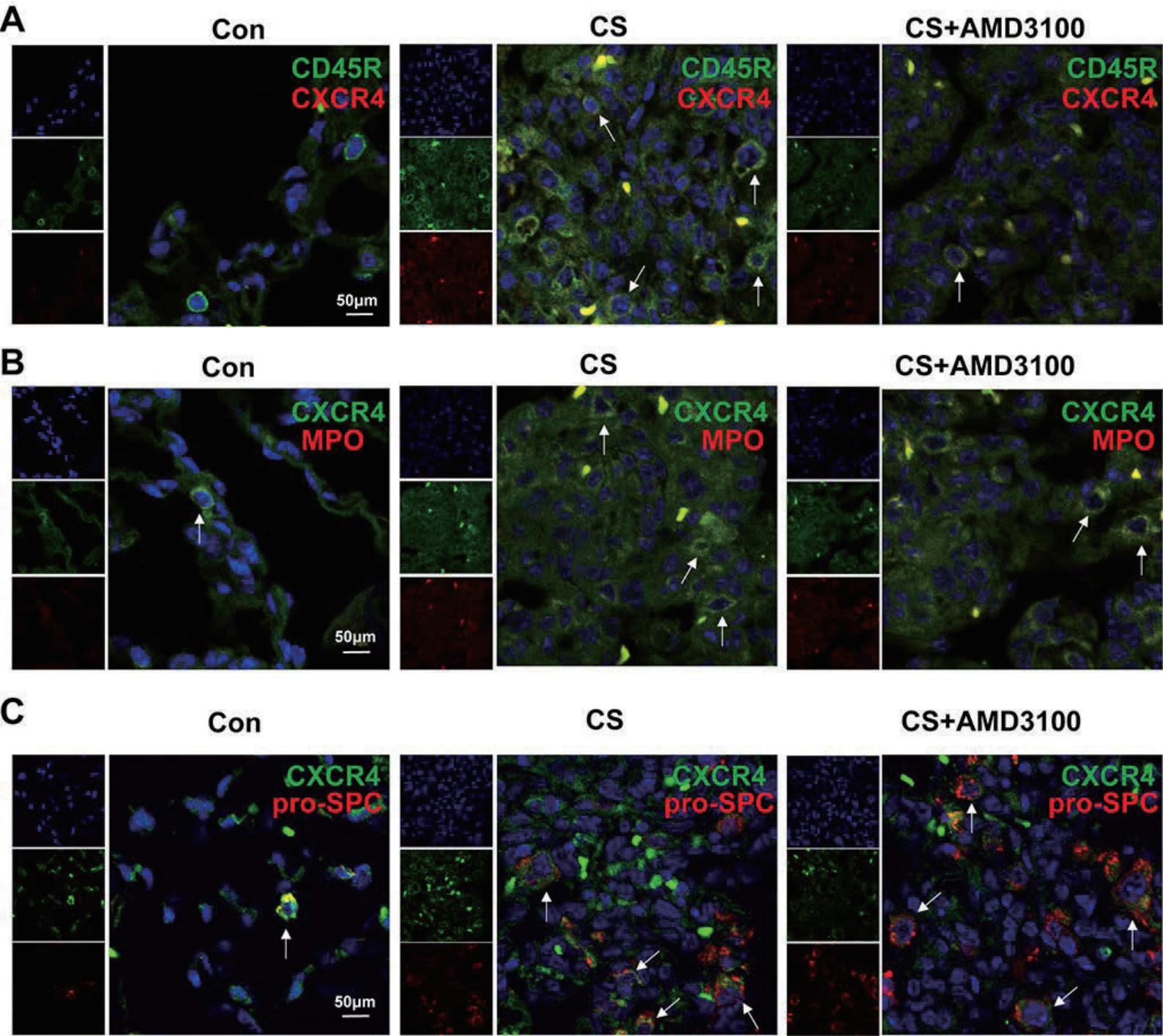
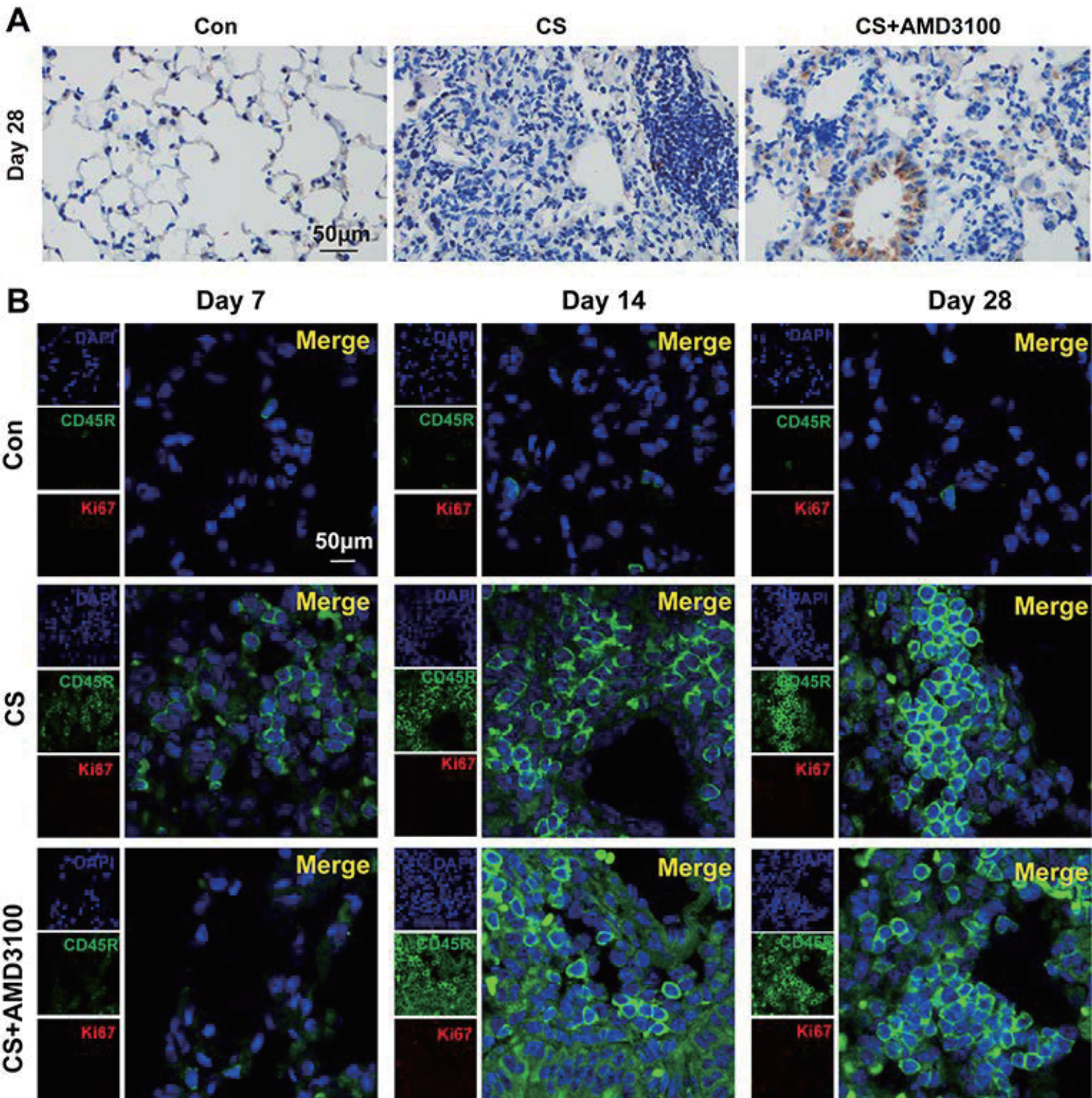


Supplemental figure 1



Supplemental figure 2



Supplemental figure 1: The CXCR4 positive cells in the lung tissue after CS exposure on day 28. (A) Double immunofluorescence analyses showed CD45R (B cells, green) and CXCR4 (red) staining in the lung. (B) Double immunofluorescence analyses showed CXCR4 (green) and MPO (red) staining. (C) Double immunofluorescence analyses showed CXCR4 (green) and pro-SPC (red) staining in the lung. White arrows indicate double positive cells. Scale bar: 50 μ m.

Supplemental figure 2: The B cells express Ki67 in the lung tissue after CS exposure. (A) Immunohistochemical analysis of Ki67 staining were performed in the lung after CS exposure on day 28. The Ki67 positive cells rarely appeared in the B LAs, but expressed in epithelial cells, mostly. (B) Double immunofluorescence analyses showed CD45R (B cells, green) and Ki67 (red) staining in the lung after CS exposure on days 7, 14, and 28. Double positive cells were rarely shown. Scale bar: 50 μ m.