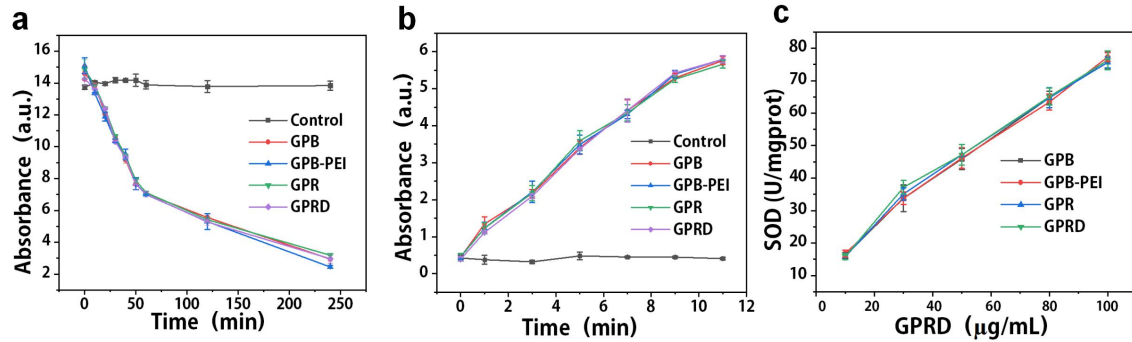
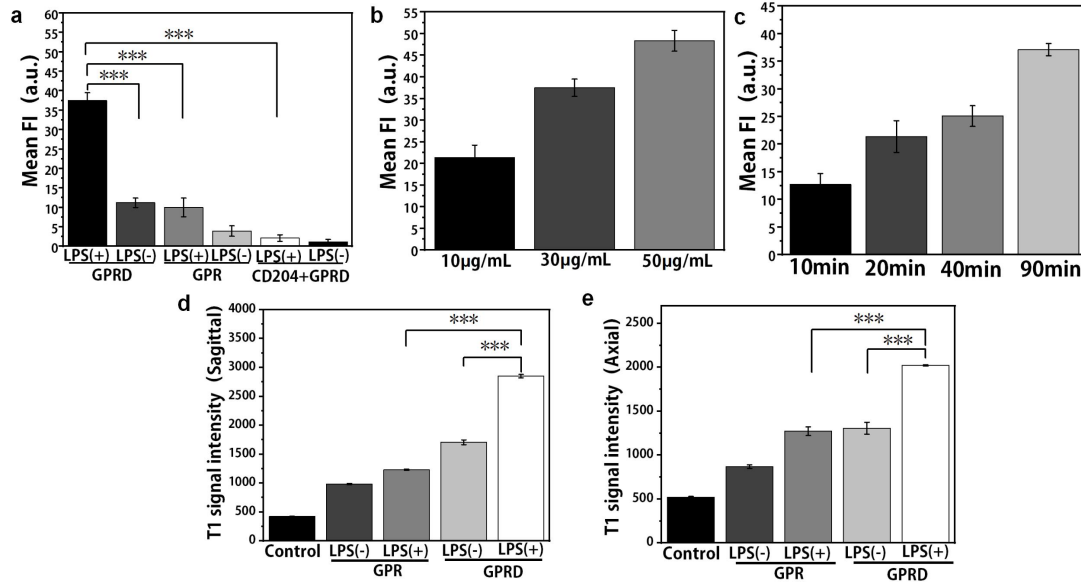


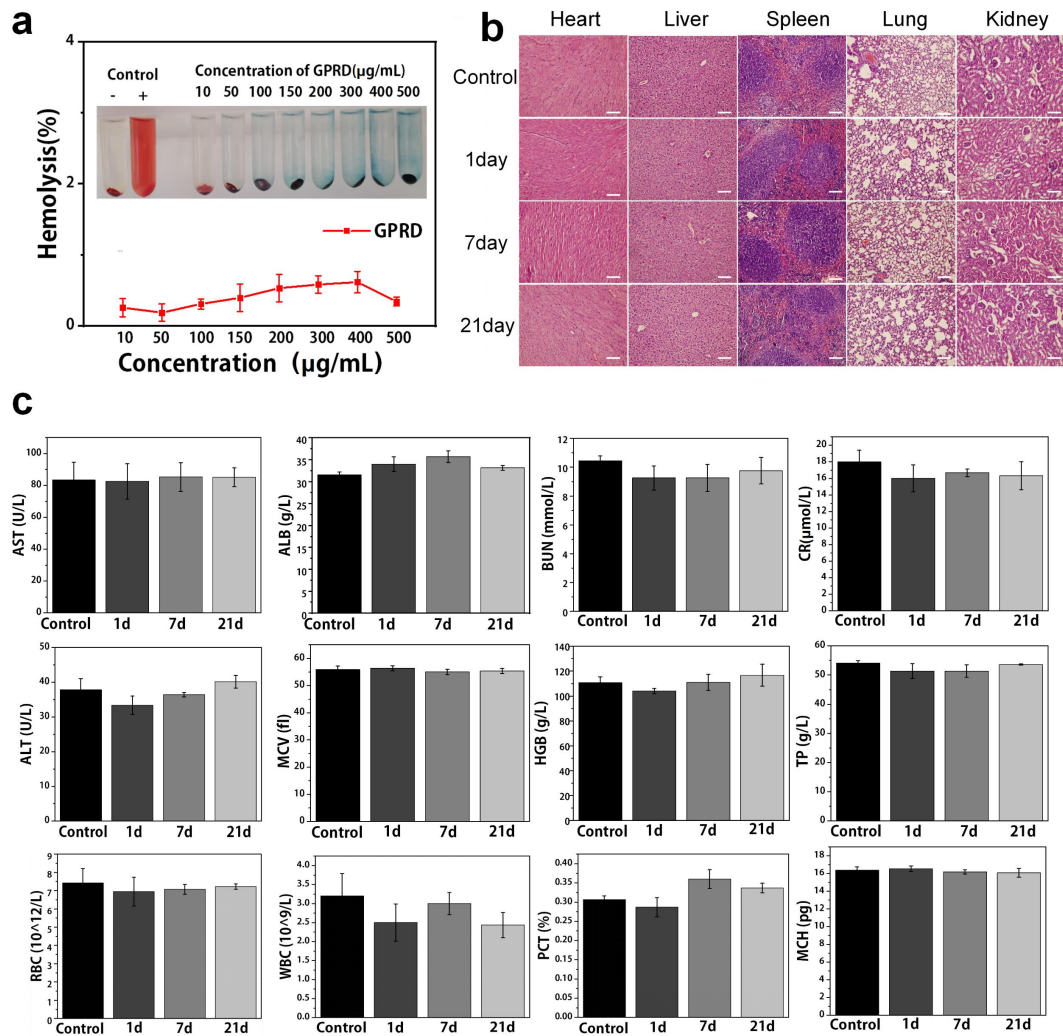
## Supporting Information



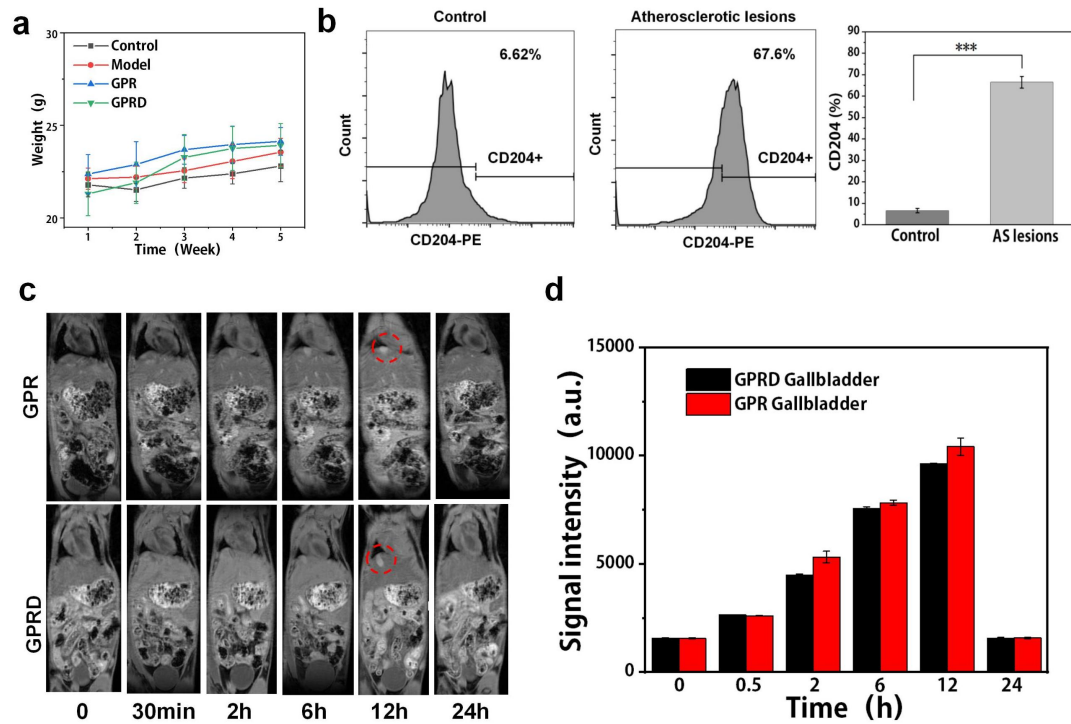
**Figure. S1** Measurements of (a) CAT-, (b) POD-, (c)SOD- like activity of GPB, GPB-PEI, GPR, and GPRD NPs with different time points or different concentrations.



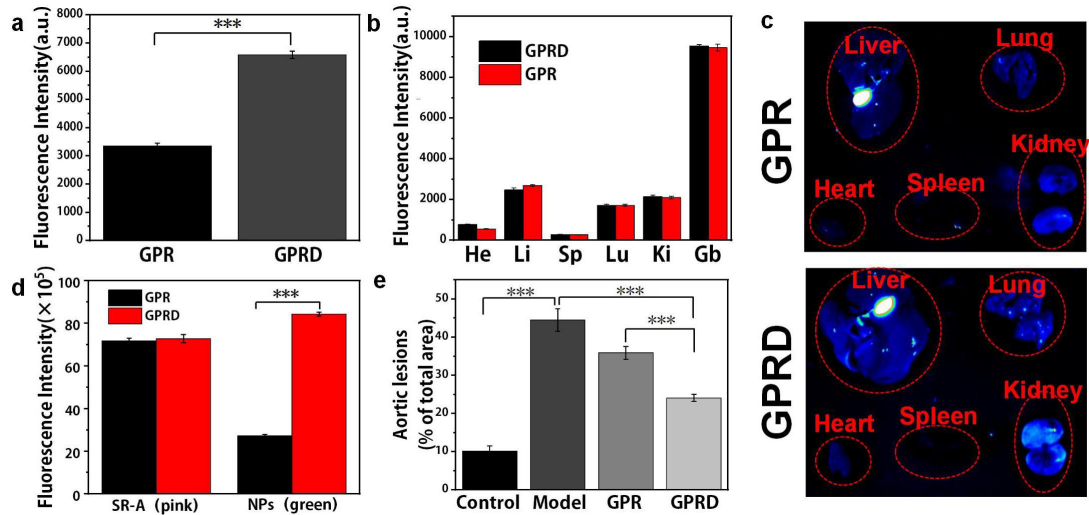
**Figure. S2** (a) The quantitative analysis of fluorescence intensity in activated RAW 264.7 cells and untreated RAW264.7 cell incubation with GPR NPs, GPRD NPs or CD204 + GPRD NPs for 20 min. The quantitative analysis of fluorescence intensity in activated RAW 264.7 cells treated with different GPRD NPs concentrations (b) and different times (c). (d-e) The quantitative analysis of MRI signal intensity (sagittal and axial view) in LPS activated RAW 264.7 cells and unactivated RAW 264.7 cells incubated with GPR NPs or GPRD NPs. \*\*\* $P < 0.001$



**Figure. S3** (a) Hemolysis images showing no obvious hemolysis at different concentrations of GPRD NPs. (b) H&E staining of heart, liver, spleen, lung, and kidney of mice after treatment with GPRD NPs for 1, 7, 21 day (scale bar = 100 µm). (c) Mouse serum biochemistry analysis and routine blood analysis pre- (control) and post-injection of GPRD NPs for 1, 7, 21 day.



**Figure. S4** (a) Variation of mouse body weight over time in each group after various treatments. (b) Flow cytometry analysis of CD204 expression of control and atherosclerotic lesions and the difference between the two groups was statistically significant ( $***P < 0.001$ ). (c) MR imaging of mice gallbladder pre- and post-injection of GPR or GPRD NPs at different time points. GPR and GPRD NPs gradually accumulated in the gallbladders at 12h (red dashed circles). (d) T<sub>1</sub> signal intensity values of gallbladder at different time points.



**Figure. S5** (a) Fluorescence intensity value of atherosclerotic model mice aorta plaque after injection of GPR or GPRD NPs at 2h. (b) Fluorescence imaging of major organs of atherosclerotic model mice after injection of GPR or GPRD NPs for 2 hours. (c) Fluorescence intensity values of major organs after injection of GPR or GPRD NPs for 2 hours. (d) Fluorescence intensity value of colocalization between GPR or GPRD NPs and SR-A in vulnerable plaque after injection 2h. (e) The quantitative analysis of ORO stained area of aorta tissues from atherosclerotic mice after treatment with various formulations.  $***P < 0.001$