

**Table 1S** Summary of minimum inhibitory concentrations of nine antimicrobials against 67 *M. pneumoniae* isolates collected in 2019

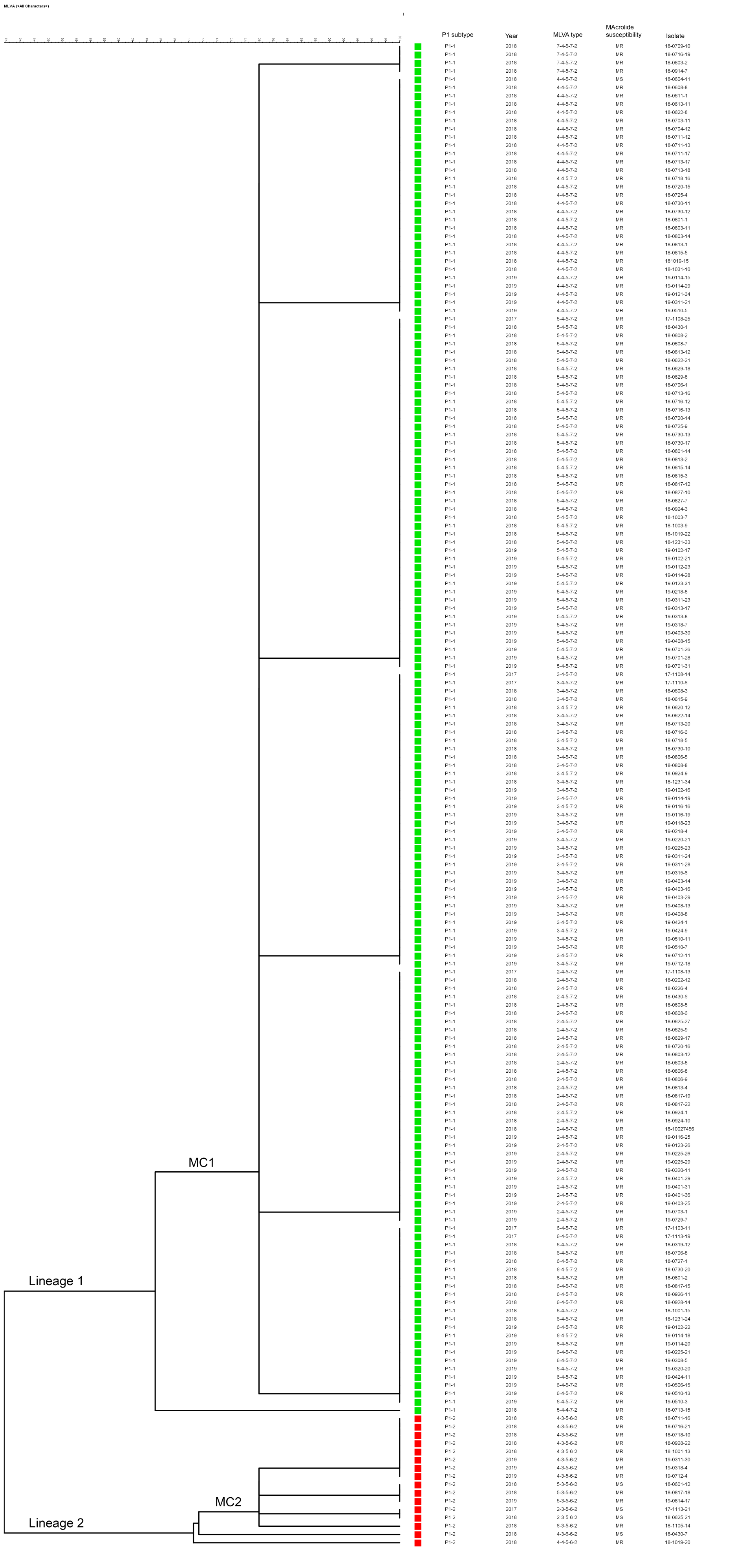
Antimicrobial agents	MIC (mg/L)				Interpretive criteria*		
	MIC Range	MIC <sub>50</sub>	MIC <sub>90</sub>	S, %	R, %	S	R
Moxifloxacin	0.06- 0.25	0.125	0.125	100	0	≤0.25	-
Levofloxacin	0.5- 1	1	1	100	0	≤1	-
Tetracycline	0.125- 1	0.5	1	100	0	≤2	-
Minocycline	0.125- 2	0.5	2	-	-	-	-
Doxycycline	0.125- 1	0.5	0.5	100	0	≤2	-
Erythromycin	128- >128	>128	>128	0	100	≤0.5	≥1
Roxithromycin	64- >128	128	>128	-	-	-	-
Azithromycin	8- 64	16	32	0	100	≤0.5	≥1
Josamycin	2- 4	4	4	-	-	-	-

**Note:** \*Interpretive criteria from CLSI M43-A.

**Abbreviations:** S, susceptible; R, resistant.

**Table 2S** Cumulative bacteriostatic rates (%) of nine antimicrobials against *M. pneumoniae* isolates of 2019

Antimicrobials	MIC value (mg/L)												
	≤0.06	0.125	0.25	0.5	1	2	4	8	16	32	64	128	> 128
Moxifloxacin	1.5	97.0	100.0	-	-	-	-	-	-	-	-	-	-
Levofloxacin	-	-	-	32.9	100.0	-	-	-	-	-	-	-	-
Tetracycline	-	1.5	11.9	91.0	100.0	-	-	-	-	-	-	-	-
Minocycline	-	1.5	6.0	59.7	76.1	92.5	100.0	-	-	-	-	-	-
Doxycycline	-	1.5	46.3	95.5	100.0	-	-	-	-	-	-	-	-
Erythromycin	-	-	-	-	-	-	-	-	-	-	-	19.4	100.0
Roxithromycin	-	-	-	-	-	-	-	-	-	-	10.4	83.6	100.0
Azithromycin	-	-	-	-	-	-	-	16.4	82.1	98.5	100.0	-	-
Josamycin	-	-	-	-	-	25.4	100.0	-	-	-	-	-	-



Supplementary Figure S1. Clustering of the 182 *M. pneumoniae* strains based on the 5-loci scheme by the unweighted pair group method with arithmetic mean (UPGMA) method. A cutoff value of 80% similarity was used to define the MLVA clusters (MC1 and MC2). The colors used are based on P1 subtypes.