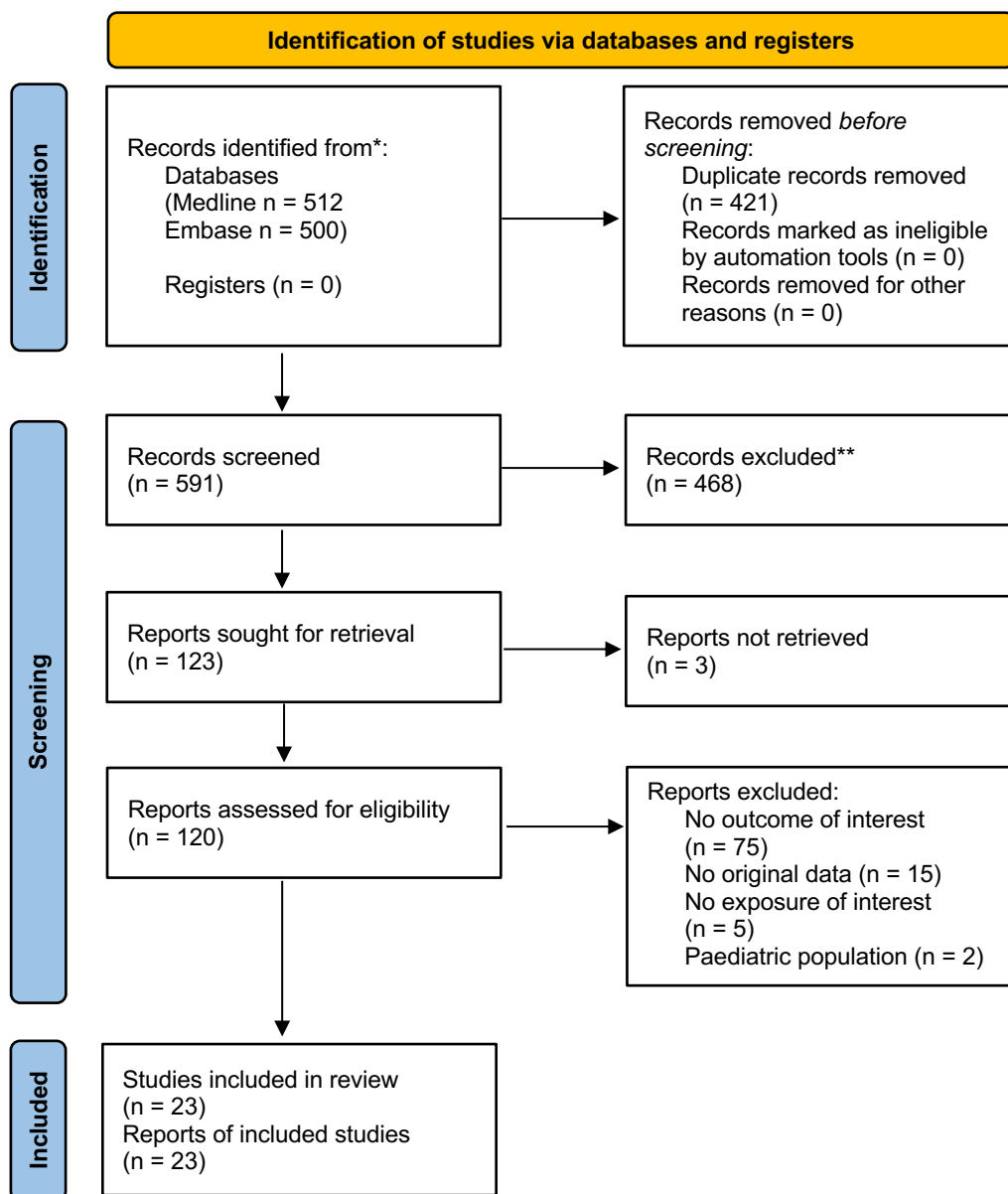


PRISMA 2020 flow diagram for new systematic reviews which included searches of databases and registers only¹



*Consider, if feasible to do so, reporting the number of records identified from each database or register searched (rather than the total number across all databases/registers).

**If automation tools were used, indicate how many records were excluded by a human and how many were excluded by automation tools.

From: Page MJ, McKenzie JE, Bossuyt PM, Boutron I, Hoffmann TC, Mulrow CD, et al. The PRISMA 2020 statement: an updated guideline for reporting systematic reviews. *BMJ* 2021;372:n71. doi: 10.1136/bmj.n71

For more information, visit: <http://www.prisma-statement.org/>

1. Different templates are available depending on the type of review (new or updated) and sources used to identify studies. For more information visit: <http://prisma-statement.org/prismastatement/flowdiagram.aspx>

1. Medline

Interface: Ovid MEDLINE(R) and Epub Ahead of Print, In-Process & Other Non-Indexed Citations and Daily

Date of Search: 9 September 2022

Number of hits: 512

Comment: In Ovid, two or more words are automatically searched as phrases; i.e. no quotation marks are needed

Field labels

- exp/ = exploded MeSH term
- / = non exploded MeSH term
- .ti,ab,kf. = title, abstract and author keywords
- adjx = within x words, regardless of order
- * = truncation of word for alternate endings

Database(s): **Ovid MEDLINE(R) and Epub Ahead of Print, In-Process, In-Data-Review & Other Non-Indexed Citations and Daily** 1946 to September 08, 2022

Search Strategy:

#	Searches	Results
1	exp Lupus Erythematosus, Systemic/	65187
2	(lupus or sle).ti,ab,kf.	91394
3	1 or 2	99852
4	(belimumab or benlysta or gsk 1550188 or gsk1550188 or hgs 1006 or hgs1006 or lymphostat b).ti,ab,kf.	832
5	3 and 4	691
6	exp animals/ not humans.sh.	5043578
7	5 not 6	689
8	limit 7 to (english or spanish)	652
9	(review not journal article).pt.	58662
10	(review or meta-analy*).ti.	703836
11	9 or 10	758943
12	8 and 11	72
13	8 not 12	580
14	(case reports not journal article).pt.	433958
15	case report.ti.	287112
16	14 or 15	663005
17	13 not 16	556
18	limit 17 to dt=19460101-20220309	512

2. Embase

Interface: embase.com		Field labels <ul style="list-style-type: none">/exp = exploded Emtree term/de = non exploded Emtree termti,ab,kw = title, abstract and author keywordsNEAR/x = within x words, regardless of order* = truncation of word for alternate endings
Date of Search: 9 September 2022		
Number of hits: 500		
Comment: Emtree is the controlled vocabulary in Embase		

#	Searches	Results
#14	#11 NOT #12 AND [01-01-1946]/sd NOT [10-03-2022]/sd	500
#13	#11 NOT #12	551
#12	#11 AND ('case report'/de OR 'case report':ti)	61
#11	#8 NOT #10	612
#10	#8 AND #9	66
#9	review:ti OR 'meta analy*':ti OR metaanaly*:ti	834276
#8	#6 NOT #7	678
#7	#6 AND ([conference abstract]/lim OR [conference paper]/lim OR [conference review]/lim)	588
#6	#5 AND [humans]/lim AND ([english]/lim OR [spanish]/lim)	1266
#5	#3 AND #4	1433
#4	'belimumab':ti,ab,kw OR 'benlysta':ti,ab,kw OR 'gsk 1550188':ti,ab,kw OR 'gsk1550188':ti,ab,kw OR 'hgs 1006':ti,ab,kw OR 'hgs1006':ti,ab,kw OR 'lymphostat b':ti,ab,kw	1666
#3	#1 OR #2	159339
#2	lupus:ti,ab,kw OR sle:ti,ab,kw	135598
#1	'systemic lupus erythematosus'/exp OR 'systemic lupus erythematosus'	12181