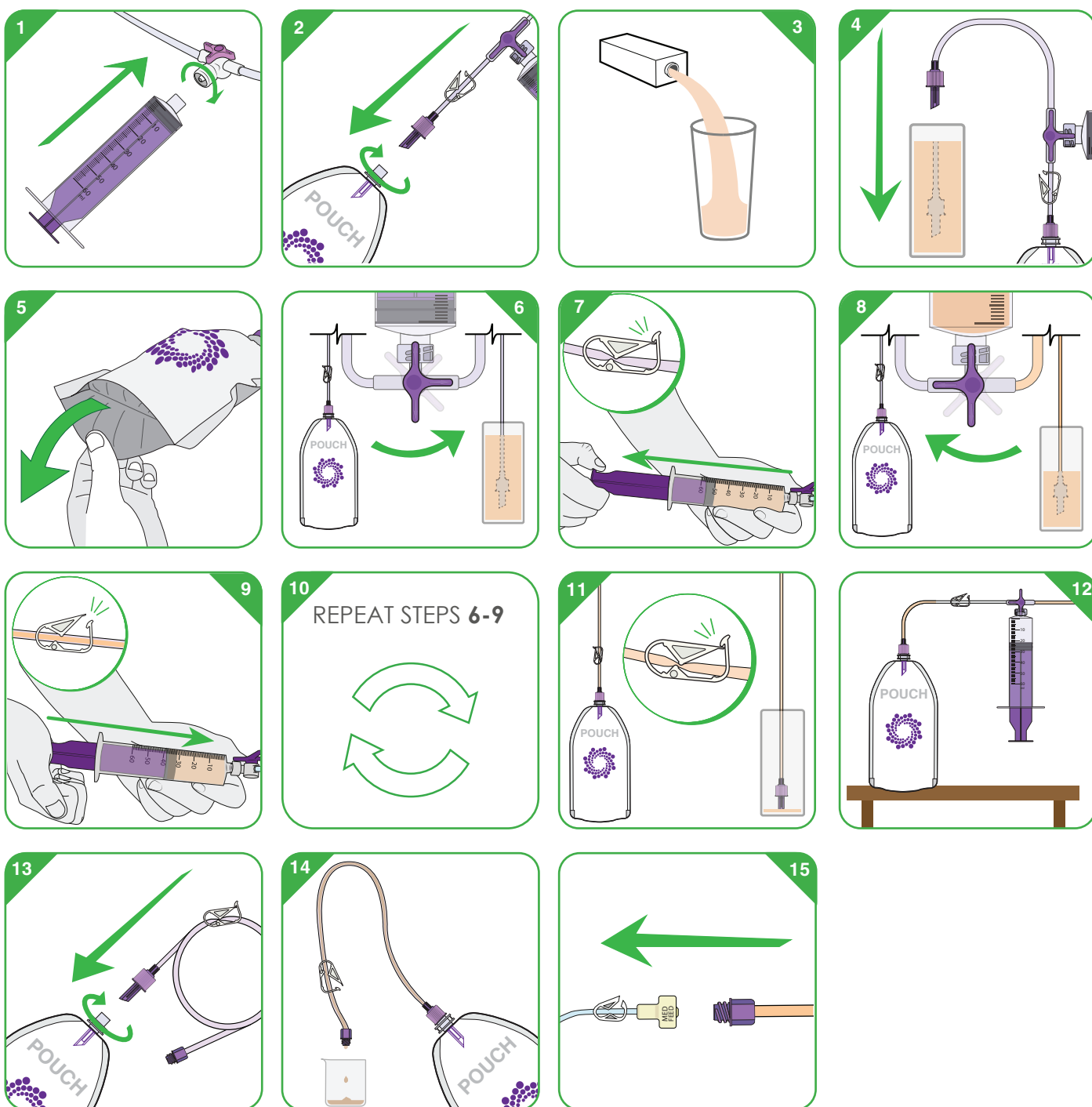


## Supplementary material. Figure S1: Illustrations of filling method and flushing steps.

### Pour Fill Method - Filling from feed poured into a container INSTRUCTIONS FOR USE

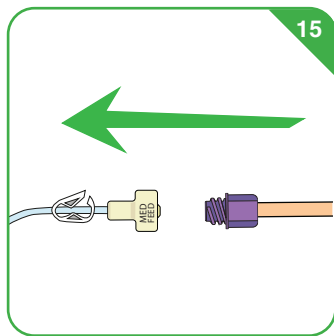
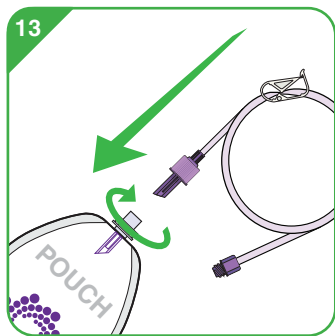
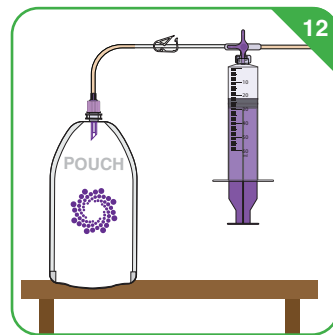
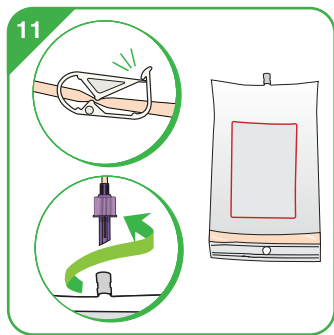
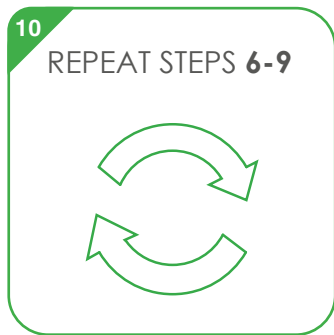
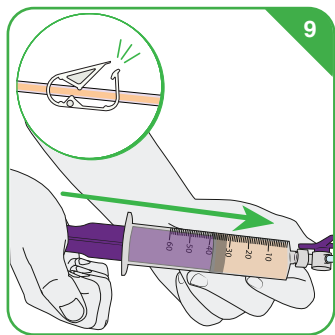
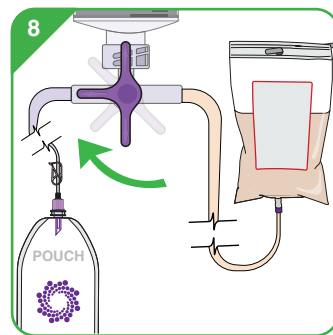
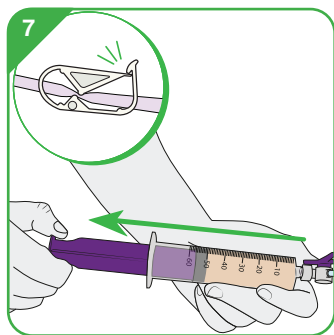
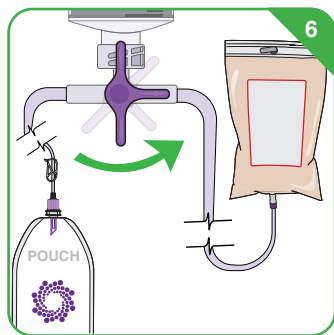
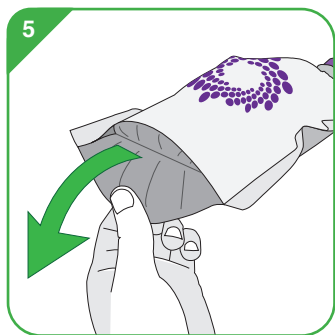
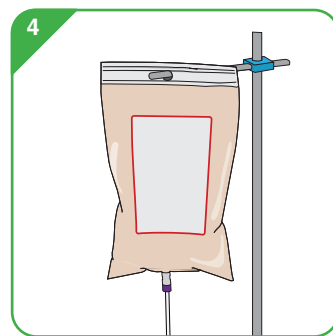
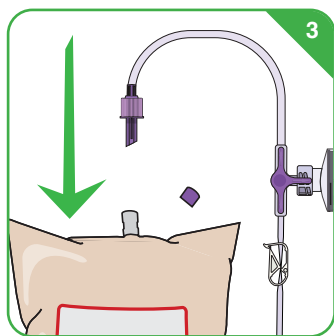
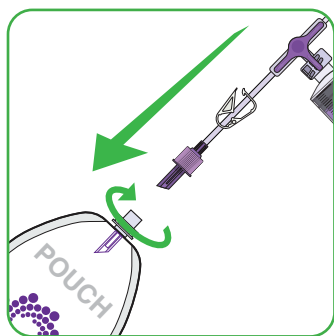
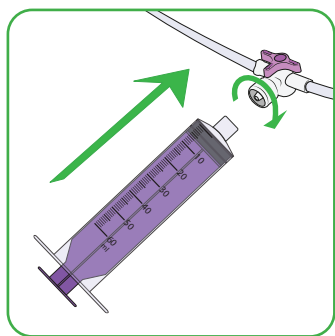
1. Connect Syringe to the 3-Way Valve on the **Filling Set**.
2. Remove the Pouch cap. Connect the **Filling Set** Cross Spike with the clamp to the Pouch in the position shown. Just push in and twist.
3. Pour feed into container.
4. Place unattached end of **Filling Set** in container of feed.
5. Open bottom of Food Pouch to allow easier filling.
6. Close clamp then rotate **Filling Set** 3-Way Valve towards container as shown.
7. Pull 50ml of feed from container into syringe.
8. Now rotate 3-Way Valve towards Pouch as shown.
9. Open clamp then push the feed into the Pouch then close clamp.
10. Repeat steps 6 – 9 until desired volume or max 500 ml has been reached.
11. When the Pouch has the desired volume, close the clamp.
12. Stand the Pouch vertical. Open clamp. Using the syringe, pull all the air into the syringe. Close clamp. Remove **Filling Set** from Pouch.
13. Attach **Giving Set** to Pouch with the clamp closed.
14. Priming: Open clamp until feed begins to drip from the **Giving Set**, then close clamp.
15. Attach the **Giving Set** to the extension set (or feeding tube) with its clamp open. Open the **Giving Set** clamp to prime the extension set. Once the extension set is primed, you are ready to feed.



## Ready To hang (RTH) Fill Method - Filling from a ready to hang feed bag

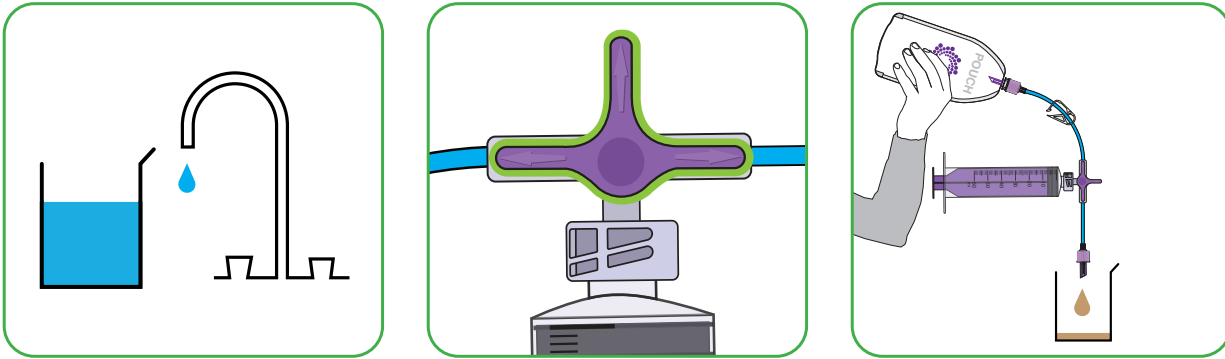
### INSTRUCTIONS FOR USE

1. Connect Syringe to the 3-Way Valve on the **Filling Set**.
2. Remove the Pouch cap. Connect the **Filling Set** Cross Spike with the clamp to the Pouch in the position shown. Just push in and twist.
3. Close the **Filling Set** clamp. Remove cap from feed bag. Place unattached end of **Filling Set** into hanging feed bag.
4. Hang up feed bag.
5. Open bottom of Food Pouch to allow easier filling.
6. Close clamp then rotate **Filling Set** 3-Way Valve towards hanging bag as shown.
7. Pull 50ml of feed from hanging feed bag into syringe.
8. Now rotate 3-Way Valve towards Pouch as shown.
9. Open clamp then push the feed into the Pouch then close clamp.
10. Repeat steps 6 – 9 until desired volume or max 500 ml has been reached
11. When the Pouch has the desired volume, close the clamp. Remove **Filling Set** from hanging feed bag.
12. Stand the Pouch vertical. For 1-2 seconds open clamp until all air has entered the syringe. Close clamp. Remove **Filling Set** from Pouch.
13. Attach **Giving Set** to Pouch with the clamp closed.
14. Priming: Open clamp until feed begins to drip from the **Giving Set**, then close clamp
15. Attach the **Giving Set** to the extension set (or feeding tube) with its clamp open. Open the **Giving Set** clamp to prime the extension set. Once the extension set is primed, you are ready to feed.



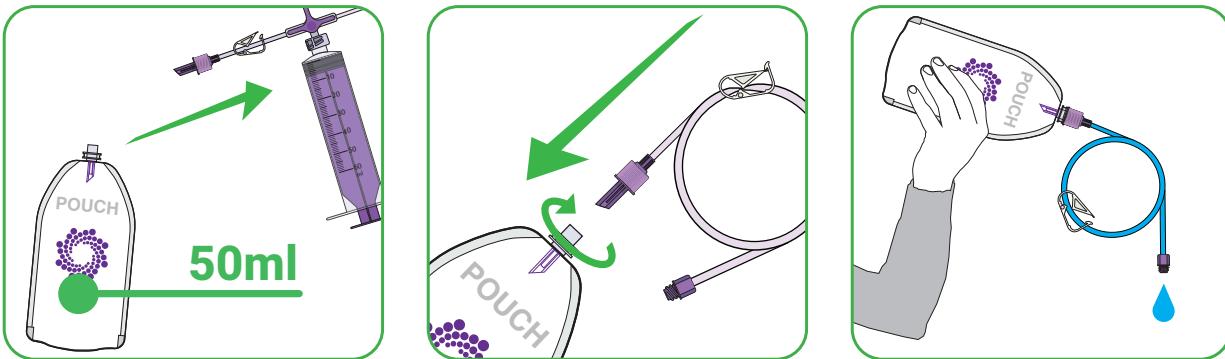
## Flushing

### Food Pouch and Filling Set



- Fill a container with 200mls of clean water
- Connect **Filling** Set into the Food Pouch.
- Fill Food Pouch with 50mls of clean water.
- Rotate the 3-way-valve as shown above.
- Open the clamp so the water flushes out through the **Filling** Set into a waste container.
- Hold the Food Pouch up at a height and squeeze to aid the flushing.
- **Repeat** with clean water.

### Giving Set



- With the **Filling** Set still connected, fill the Food Pouch with 50mls of water.
- Now remove the **Filling** Set.
- Connect the **Giving** Set into the Food Pouch with its clamp closed.
- Open the clamp to flush water out through the **Giving** Set into a container
- Hold the Food Pouch up at a height and squeeze to aid the flushing.