

Table S1 The Characteristics of LUAD and LUSC patients from the TCGA database

Dataset	LUAD	LUSC
Total patients	477	467
Age at diagnosis (y)	66(33-88)	66(39-85)
Gender		
Male	220	346
Female	257	121
TNM stage		
I	253	222
II	113	154
III	78	81
IV	25	6
unknow	8	4
T stage		
T1	159	104
T2	254	274
T3	43	68
T4	18	21
TX	3	-
N stage		
N0	307	295
N1	90	124
N2	67	39
N3	2	5
NX and unknown	11	4
M stage		
M0	313	387
M1	24	6
MX and unknown	140	74
Survival status		
Dead	157	181
Alive	320	286

Table S2 Characteristics of LUAD and LUSC patients from GEO database

Dataset	GSE31210	GSE30219	GSE30219	GSE72094
Platform	GPL570	GPL570	GPL570	GPL15048
histology	LUAD	LUAD	LUSC	LUAD
Total patients	204	83	61	386
Age at diagnosis (y)	60(30-76)	60(44-86)	63(46-82)	66(38-89)
Gender				
Male	95	65	56	168
Female	109	18	5	218
Smoking				
Never	105	-	-	95
Ever	99	-	-	291
TNM stage				
I	162	-	-	246
II	42	-	-	65
III	-	-	-	56
IV+unknow	-	-	-	14+5
T stage				
T1	-	69	49	-
T2	-	12	6	-
T3	-	2	4	-
T4	-	-	2	-
N stage				
N0	-	80	52	-
N1	-	3	9	-
Relapse				
Yes	54	27	38	-
No	150	56	22	-
NA	-	-	1	-
Survival status				
Dead	30	43	43	109
Alive	174	40	18	277

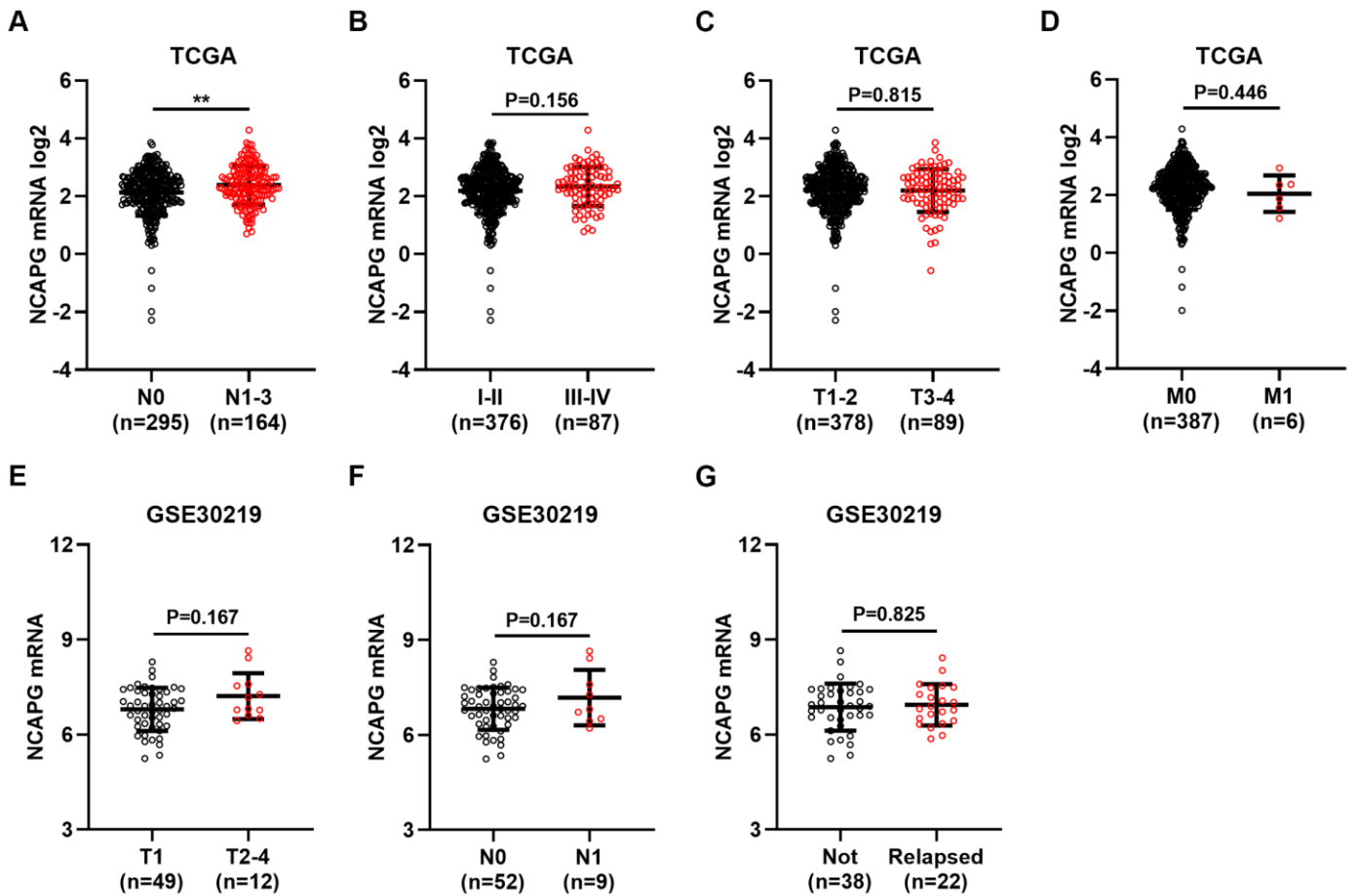


Figure S1 Correlation between NCAPG mRNA expression and clinicopathologic characteristics of LUSC patients. (A-D) The association of NCAPG mRNA with N stage, TNM stage, T stage and M stage of LUSC in TCGA dataset. (E-G) Association of NCAPG mRNA expression with T stage, N stage and relapse status of LUSC patients in GSE30219 dataset. **P < 0.01.

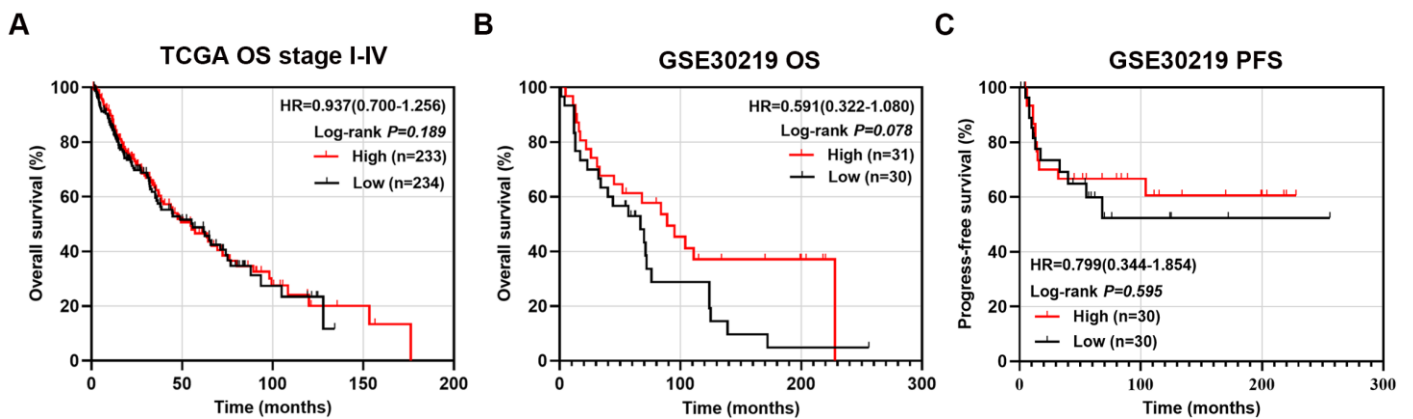


Figure S2 Impact of NCAPG on survival of patients with LUSC. (A) K-M curve showing the impact of NCAPG on the OS of TCGA-LUSC patients. (B-C) K-M curves indicating the effect of NCAPG on OS and PFS of GSE30219-LUSC patients.

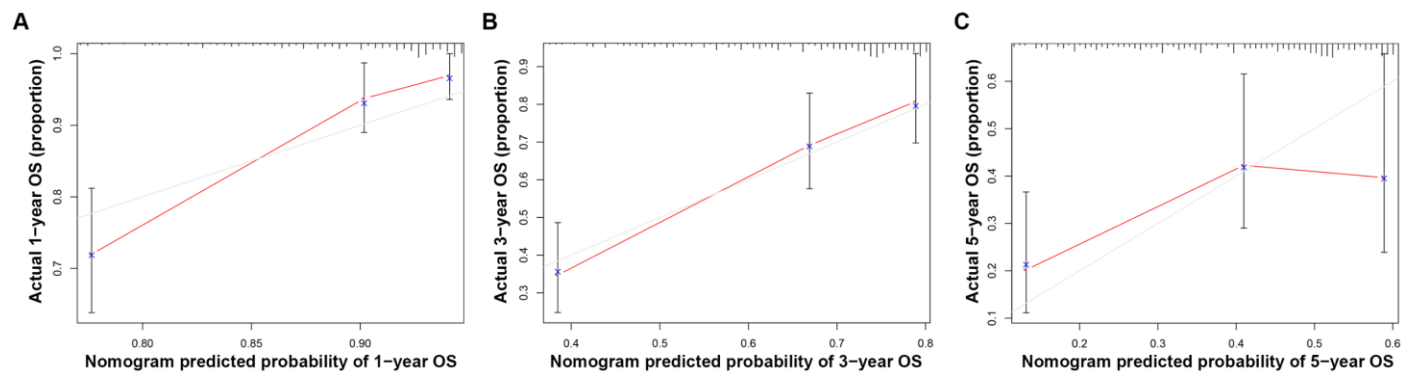


Figure S3 Calibration curve of the nomogram for patients with LUAD. The calibration curve showing the OS at one year (A), three years (B), and five years (C).

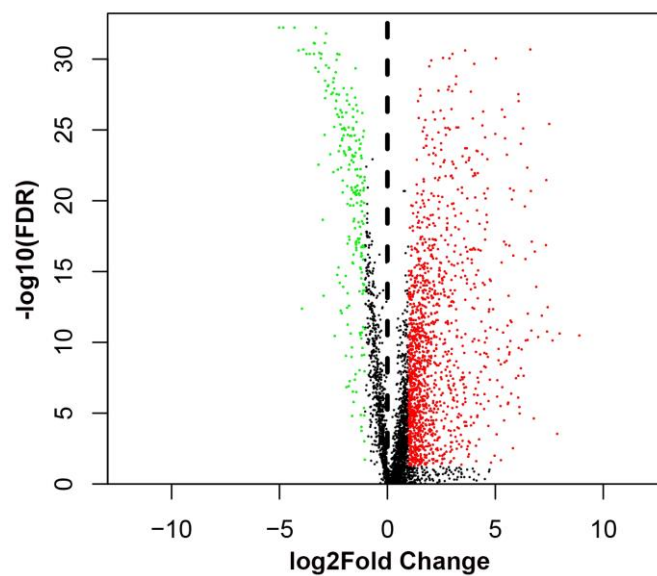


Figure S4 The volcano plot of DElncRNAs.

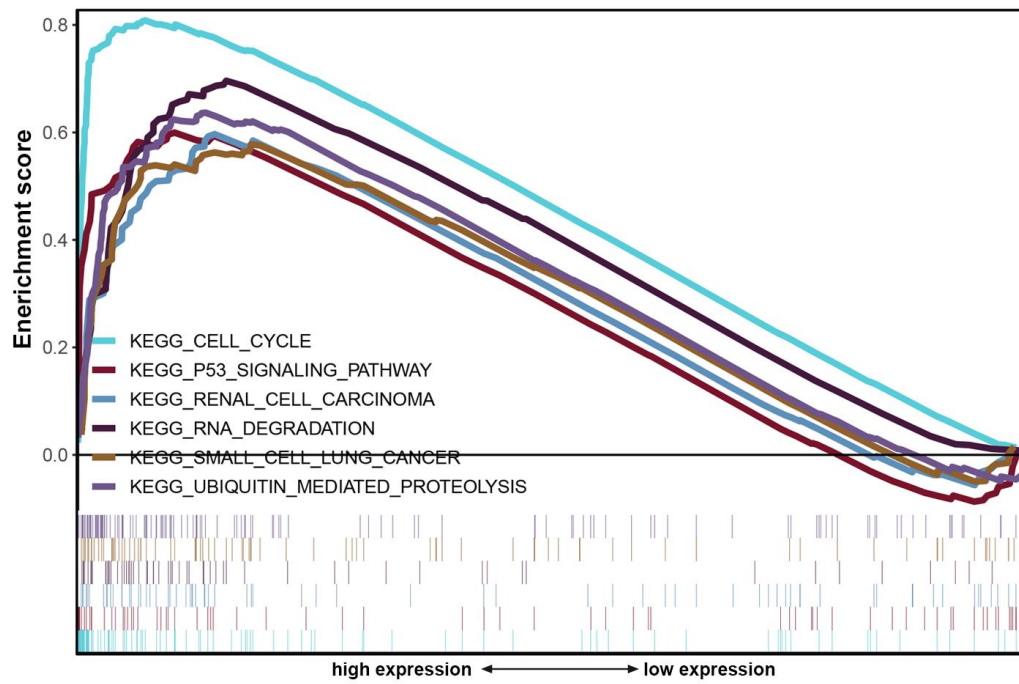


Figure S5 Plots showing GSEA results for LncRAN AC099850.3.