

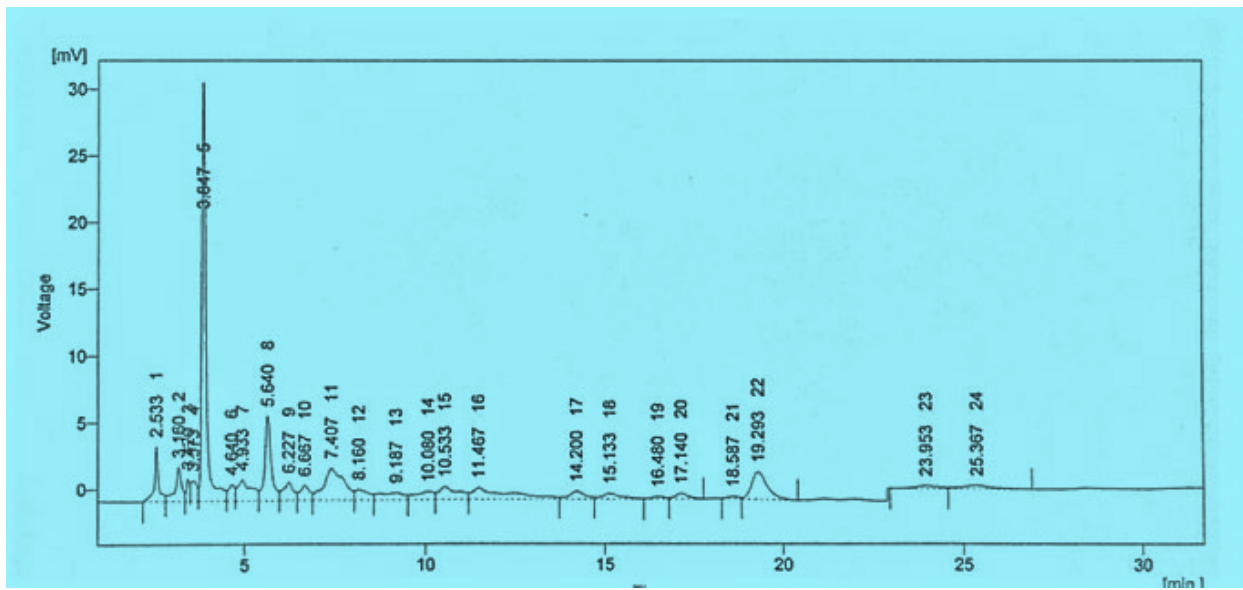
## Supplementary materials

**Table S1:** Effects of extracts on microbes.

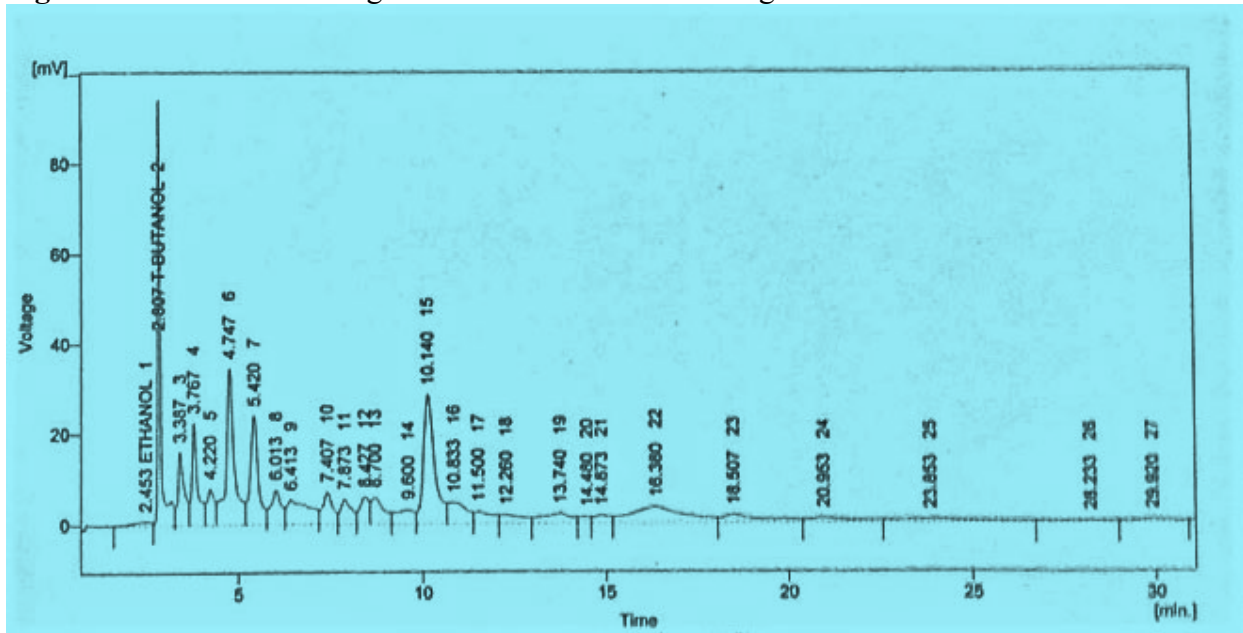
Serial #	Solvents	<i>Streptococcus mutans</i>	<i>Enterococcus faecalis</i>	<i>Staphylococcus spp.</i>	<i>Lactobacillus spp.</i>
1	Ethanol	+	+	+	+
2	Chloroform	-	-	-	+
3	Ethyl Acetate	+	+	+	+
4	Distilled water	-	-	-	-
5	<i>n</i> -Butanol	-	-	+	+
6	<i>n</i> -Hexane	-	+	+	+
7	DMSO	-	-	-	-

**Table S2:** Percentage scavenging effects of IC<sub>50</sub> of antioxidant assays for CME and Fractions.

Extracts	Scavenging effects (%) at different concentrations $\pm$ STDEV*						IC <sub>50</sub> mg/ml
	1mg/ml	0.5mg/ml	0.25mg/ml	0.01mg/ml	0.05mg/ml	0.025mg/ml	
Ethanol	52.4 $\pm$ 0.76	33.8 $\pm$ 0.21	34.5 $\pm$ 0.03	23.5 $\pm$ 0.36	22.42 $\pm$ 0.05	10.4 $\pm$ 0.26	52.4
<i>n</i> -hexane	90.6 $\pm$ 0.20	34.8 $\pm$ 0.15	26.02 $\pm$ 0.77	21.7 $\pm$ 0.07	15.8 $\pm$ 0.19	16.2 $\pm$ 0.17	90.6
Chloroform	85.6 $\pm$ 0.05	73.05 $\pm$ 0.04	50.4 $\pm$ 0.08	33.3 $\pm$ 0.03	9.4 $\pm$ 0.11	10.3 $\pm$ 0.03	85.6
Ethyl acetate	82.9 $\pm$ 0.79	60.9 $\pm$ 0.25	71.2 $\pm$ 0.92	49.7 $\pm$ 0.19	8.61 $\pm$ 0.07	4.69 $\pm$ 0.02	82.9
<i>n</i> -butanol	91.2 $\pm$ 0.04	83.1 $\pm$ 0.01	50.8 $\pm$ 0.02	17.9 $\pm$ 0.02	15.6 $\pm$ 0.12	10.5 $\pm$ 0.04	91.2
Distilled Water	43.9 $\pm$ 0.03	12.8 $\pm$ 0.02	11.6 $\pm$ 0.12	9.6 $\pm$ 0.12	7.4 $\pm$ 0.01	7.06 $\pm$ 0.02	43.9
Ascorbic acid	95 $\pm$ 0.27	94.8 $\pm$ 0.27	90 $\pm$ 0.27	66.4 $\pm$ 0.27	44.7 $\pm$ 0.27	30 $\pm$ 0.27	95



**Figure S1:** HPLC chromatogram of Ethanol extract of Ginger.



**Figure S2:** HPLC chromatogram of Water extract of Ginger.

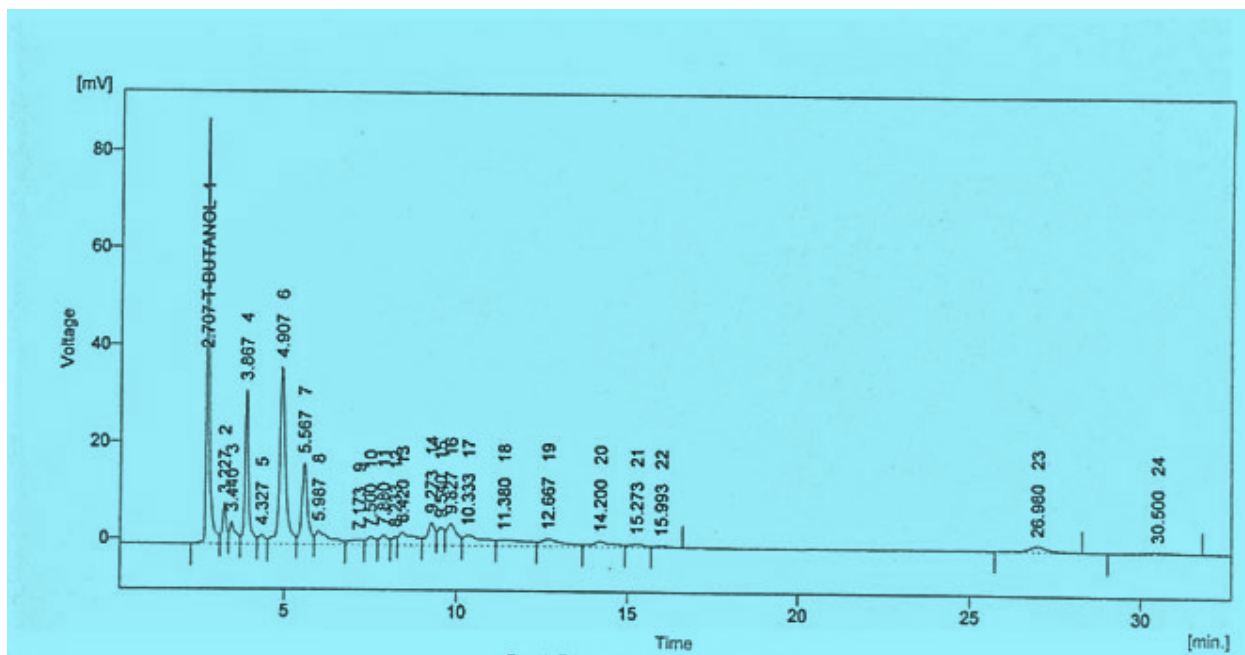


Figure S3: HPLC chromatogram of N-Hexane extract of Ginger.

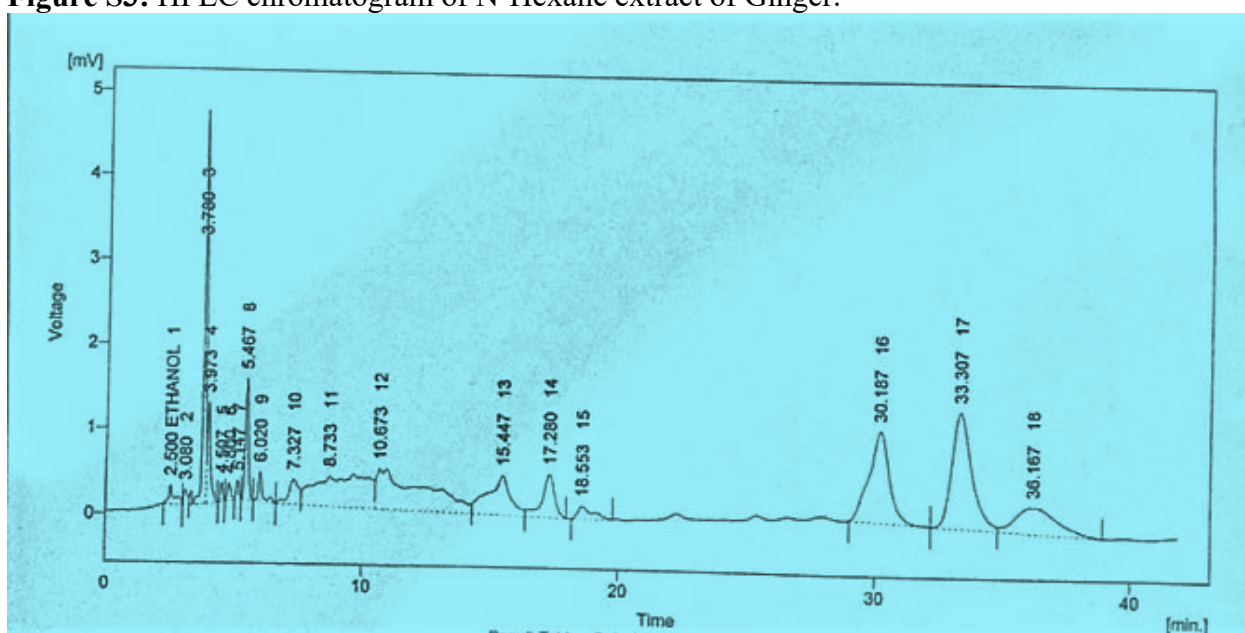


Figure S4: HPLC chromatogram of N-Butanol extract of Ginger.

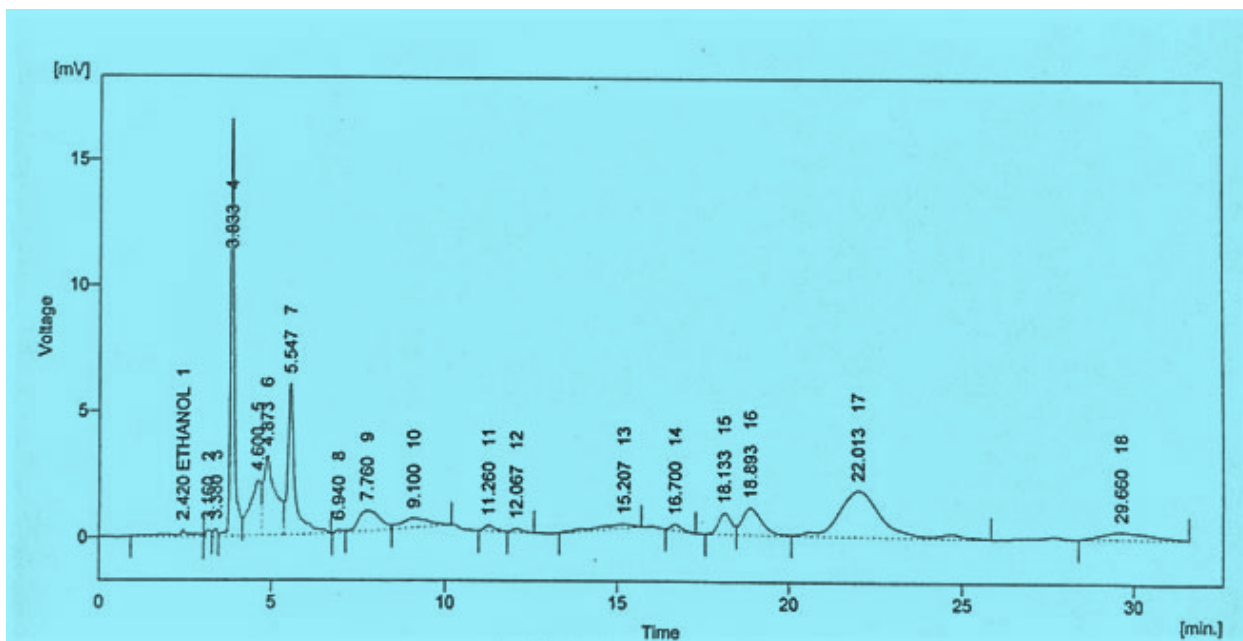


Figure S5: HPLC chromatogram of Ethyl Acetate extract of Ginger.

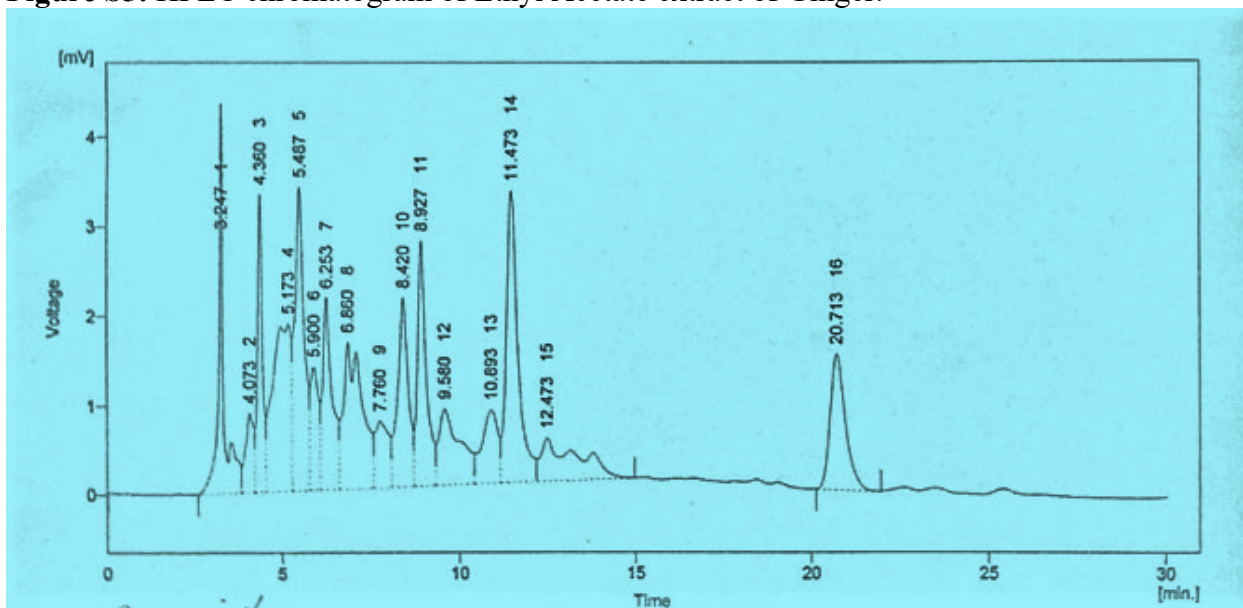


Figure S6: HPLC chromatogram of Chloroform extract of Ginger.