

# 1 **Supplementary material**

## 2 **Supplementary Figure 1. Cumulative rate of clinical relapse and HBsAg loss after** 3 **discontinuation of NA therapy.**

4 (A) Clinical relapse was observed in 62 patients within 8 years of follow-up, with a cumulative  
5 incidence of 56.9% (HBeAg-positive vs. HBeAg-negative: 50.6% vs. 64.8%, log-rank test:  $p =$   
6 0.108). (B) Fourteen patients cleared HBsAg, resulting in a cumulative incidence of 23.4% at  
7 year 8.

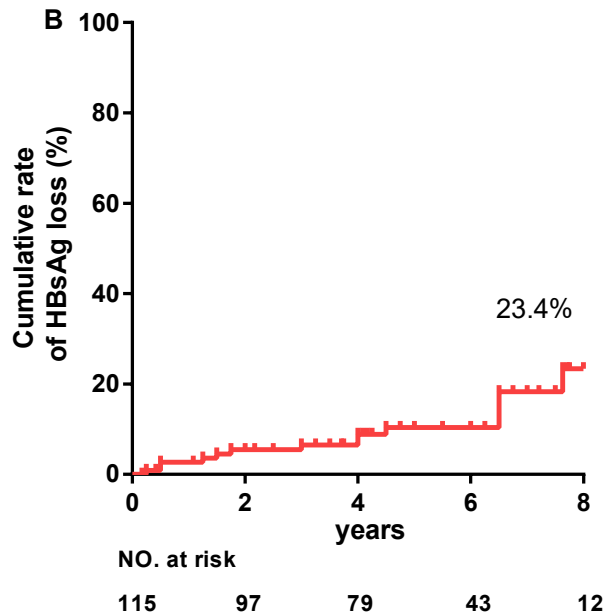
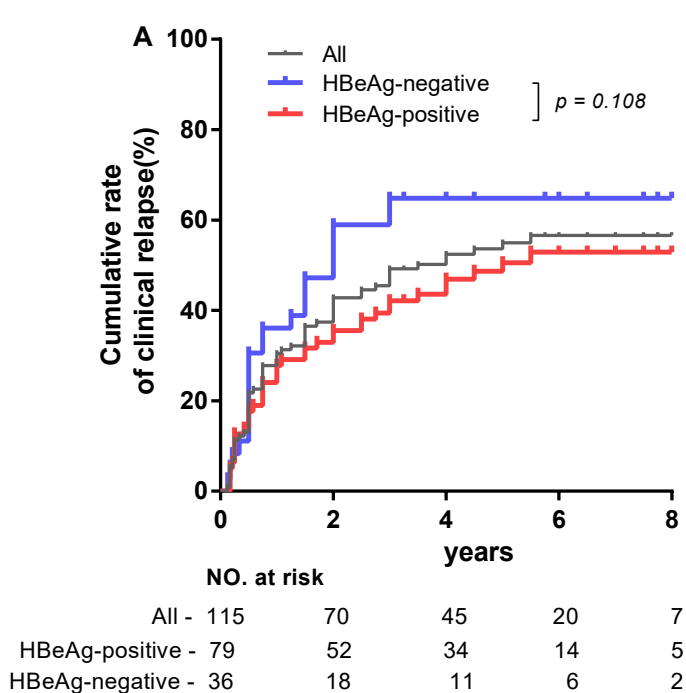
## 8 **Supplementary Figure 2. Plasma sPD-1 levels at the end-of-treatment and clinical** 9 **relapse in patients with clinical relapse.**

10 Patients who developed clinical relapse had an estimated off-treatment sPD-1 increase of 1.05  
11  $\log_{10}$  pg/mL. (n=51) EOT, end of treatment; CR, clinical relapse.

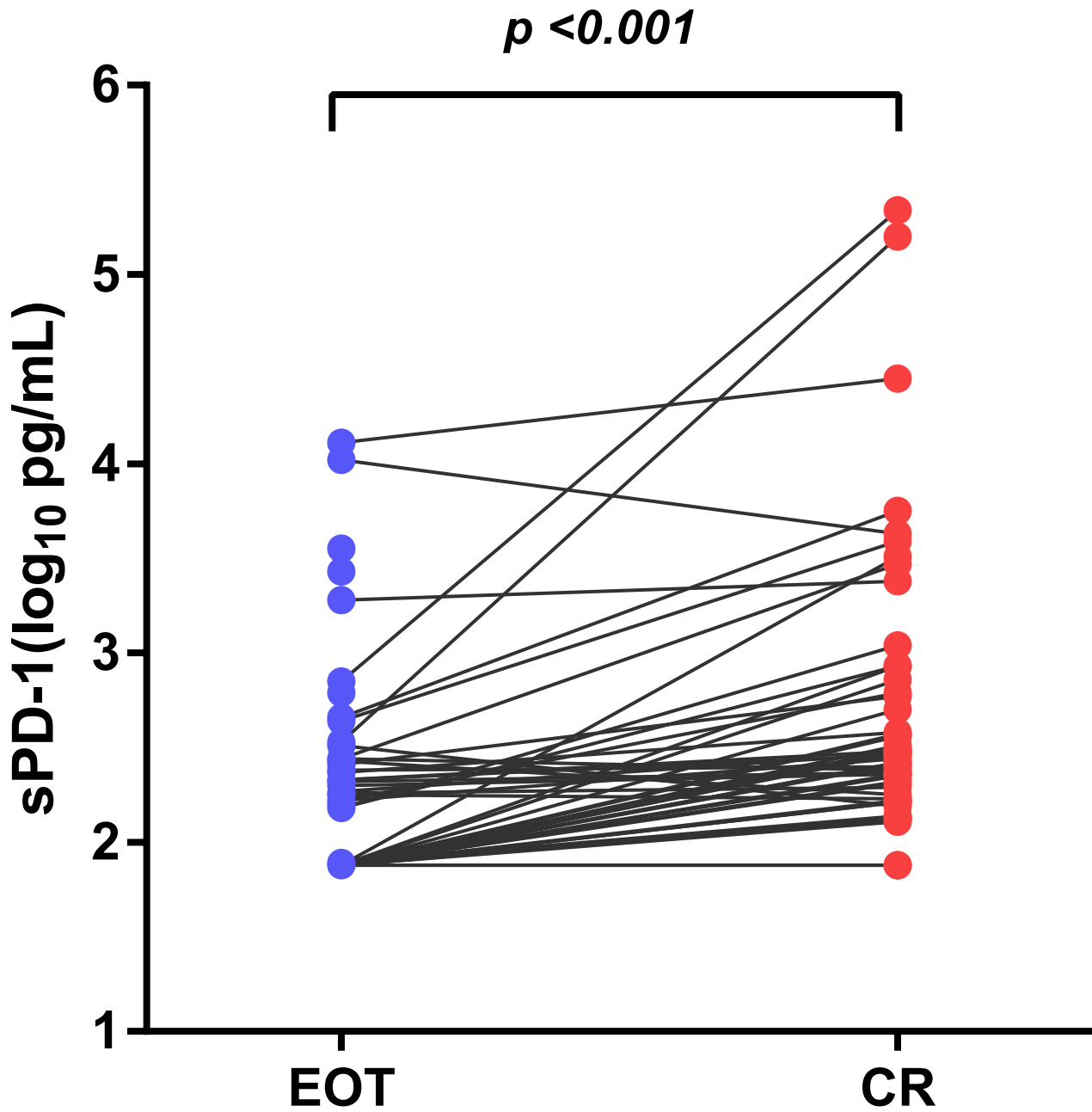
## 12 **Supplementary Figure 3 Cumulative rate of HBsAg decline to <10 IU/mL and < 100 IU/mL** 13 **in patients with detectable and undetectable sPD-1.**

14 In patients with detectable and undetectable sPD-1, the cumulative rates of HBsAg decline to  
15 HBsAg < 10 IU/mL (A) and HBsAg < 100 IU/mL (B) were 38.6 % and 9.7% (log-rank test:  $p =$   
16 0.003), 55.2% and 26.7% (log-rank test:  $p = 0.008$ ), respectively.

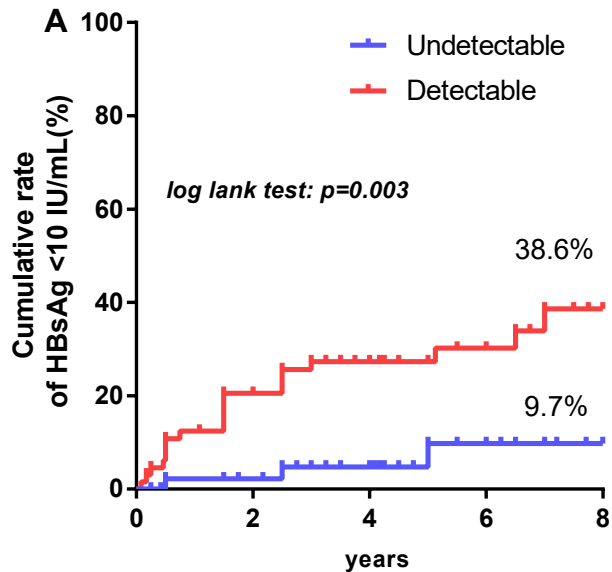
# Supplementary Figure 1



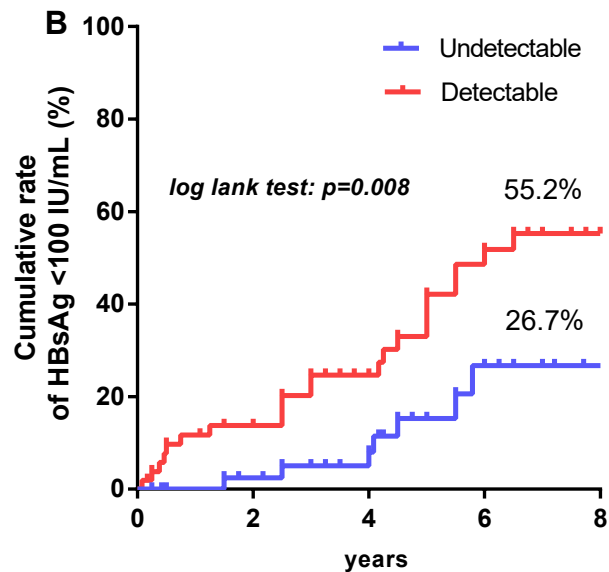
Supplementary Figure 2



Supplementary Figure 3



Undetectable	- 47	40	31	14	5
Detectable	- 66	48	36	23	5



Undetectable	- 44	38	12	12	4
Detectable	- 53	41	16	16	4