

Supplementary table 1 HLXLD-related targets, AS-related targets and HLXLD-AS-related targets

961 HLXLD targets	1436 AS-related targets	321 overlapping targets
PGR	ABCB11	MMP2
NCOA2	ABCC2	EDN1
PTGS1	ABCC4	HSPB1
PTGS2	ABCG2	IRAK1
HSP90AA1	ALB	SUMO1
KCNH2	CYP1A1	MMP7
PRKACA	CYP2C19	NOS2
DRD1	CYP2C8	CACNA2D1
CHRM3	CYP2C9	FGFR1
CHRM1	CYP2D6	FADS1
SCN5A	CYP3A4	LEP
CHRM4	CYP3A5	PTPN22
PDE3A	HDAC2	CYP2D6
ADRA1A	HMGCR	S1PR2
CHRM2	ITGAL	PRKCB
ADRA1B	SLC10A1	C5AR1
ADRB2	SLC15A1	CYP2C19
CHRNA2	SLC22A8	VKORC1
SLC6A4	SLC7A11	UGT2B7
OPRM1	SLCO1A2	FOXP3
CHRNA7	SLCO1B1	GNAS
BCL2	SLCO1B3	GSTA2
BAX	SLCO2B1	PTK2
CASP9	UGT1A1	SHBG
JUN	UGT1A3	BCL2
CASP3	UGT2B7	KL
CASP8	APOE	GCK
PRKCA	ATHS	F7
PON1	APOB	EDNRA
MAP2	APOA1	GHRL
NR3C2	ABCA1	CYP1A1
IGHG1	LDLR	MAPK10
RXRA	ABCG5	PTGES
NCOA1	PCSK9	FGF1
ADRA2A	ABCG8	CEL
SLC6A2	LIPC	CCR3
SLC6A3	LMNA	AHR
AKR1B1	PPARG	NFE2L2

PLAU	APOA2	NR1I3
LTA4H	CCL2	KLF4
MAOB	CRP	HDAC3
MAOA	LPA	ECE1
CTRB1	CETP	BMP6
ADRB1	LPL	TNFAIP6
F10	SELE	CYP19A1
F7	OLR1	GC
PTPN1	IL6	PDGFRB
PCP4	PON1	ADRB1
ADRA1D	LDLRAP1	TNF
F2	ACE	SIRT2
DPP4	ADIPOQ	EGF
GC	MMP9	IL1A
SNW1	NOS3	CMA1
AR	VEGFA	CAV3
NR3C1	LCAT	LDLR
NFKB1	TNF	JAK2
AKR1C3	VCAM1	CASP1
CYP24A1	MTHFR	SPP1
GPBAR1	SERPINE1	F2
SNAI2	ICAM1	WNT5A
MED1	INS	APOA2
SNAI1	TLR4	PTGS2
CYP3A4	APOC3	SQLE
CALB1	PLA2G7	NCF1
FGF23	APOA5	CYP2C9
GFI1	IL10	UTS2R
LANCL2	PPARA	CTSK
WNT4	WRN	NOTCH2
TCF3	ELN	PRKDC
KL	SMARCA4	BMP2
CYP2R1	CYP27A1	ESR1
PML	APOC2	ACE2
B4GALT1	EDN1	PDE4D
S100G	ESR1	SREBF2
CYP27A1	AGER	VEGFA
KANK2	MPO	MME
IRX5	CYP7A1	MYC
NR1H4	SCARB1	VCP
CYP27B1	PLTP	GSK3B
VDR	LDLR-AS1	MMP1
CNR1	THBD	STAT1

ADORA1	IL1B	MMP12
DGUOK	EPHX2	KCNQ1
NPC1L1	CX3CR1	PROC
RORC	VWF	PTPRC
SHBG	SELP	ABCC9
HMGCR	LEP	HMGCR
CYP17A1	LIPA	PPARD
SREBF2	AGTR1	NR3C2
CYP19A1	DYNC2LI1	HMOX1
RORA	MYH11	GLO1
ESR2	DOCK6	MC4R
CYP2C19	ABCG1	INS
ACHE	IL18	FLT1
SERPINA6	APOA1-AS	MMP3
G6PD	SPP1	NAMPT
TBXAS1	NAMPT	MMP8
PTGES	HSPD1	GSTM1
PPARD	ALOX5	IL10
SQLE	RETN	MAPK1
GLRA1	CYBA	CYP27B1
HSD11B1	MIR6886	MMP14
PTPN6	LOC106560211	PLAT
PTPN2	MSR1	MDM2
CES2	CXCL8	TNFSF11
PPARG	GHR	AKT2
UGT2B7	CD40	EGFR
PPARA	LIPG	MYLK
DYRK1B	PON2	SOD1
MET	CDKN2B-AS1	CXCR3
MAPKAPK2	MMP3	NR4A1
CDC25A	PON3	LGALS3
CDC25B	ZMPSTE24	SELPLG
GSK3A	FABP4	SMARCA4
CLK4	SOAT1	G6PD
SCD	F3	MAPK8
BAZ2B	ITGB3	F10
BAZ2A	ANGPTL3	ACVR1
QPCT	ENG	STAR
FLT1	TP53	F2R
PDGFRB	TGFB2	AKR1B1
FLT4	ACTA2	GPER1
IGF1R	ERCC6	APLN
PDGFRA	SMAD3	CHEK2

PTK2	MGP	PLA2G7
ROCK2	TGFB1	TERT
PLK4	CELA2A	CETP
LRRK2	ENPP1	SRC
JAK3	LOX	RUNX2
JAK1	BANF1	TFPI
JAK2	PLAT	CXCL10
DCTPP1	MMP2	CCL5
MAPK10	LRP1	ADAM8
SLC5A2	TGFBR2	TP53
TTK	PPP1R17	CASP9
TGFBR1	SREBF2	CDKN1A
BRAF	AGT	LAMP2
TNNI3K	ERCC1	ELAVL1
GRK3	PECAM1	NCOA2
GRK2	TNFRSF11B	SOSTDC1
PLK1	CD14	PDGFRA
IRAK4	FBN1	PREPL
GRK5	TGFBR1	NFKB1
HRH3	HMOX1	SIRT1
RPS6KA3	ABCC6	ABCC1
SLC9A1	PSEN1	IL1B
CLK2	TNFSF4	REN
PPIA	LTA	HPSE
PTK2B	SMPD1	NFKBIA
MAPK8	ERCC8	IGFBP3
ALOX5	APOH	NOD2
BACE1	XYLT1	TREM1
KCNA3	TGFB3	AMPD2
SRD5A1	F2	KISS1
CA12	IFNG	P2RX7
CA9	REN	GAS6
KCNA5	MIR155	GSTM2
ALOX15	XYLT2	PLAUR
CA7	JAK2	ESR2
CA14	CD36	AGTR2
CA13	PTGS2	AKT3
CA5B	TNNT2	COMT
CBR1	KCNJ5	LTA4H
CA6	CST3	MEF2C
METAP2	TUG1	SOAT2
LIMK1	F5	RYR3
CCR9	AKT1	COX5A

P2RX7	COL3A1	TGFB2
PARP2	F13A1	PLAU
MTOR	CAT	MMP13
HPGDS	MMP1	ALOX5
CA1	H19	GJA1
CA4	CD40LG	FASN
AKR1C1	LIPE	MAP3K5
ATM	NR1H2	RXRA
BRD4	NLRP3	NOS1
TTR	CREB3L3	ABCG1
MAP2K1	APOC4-APOC2	PTPN11
LYPLA1	HLA-DRB1	DPP4
LYPLA2	TP53COR1	PON1
CNR2	MIR145	ABCA1
CA2	SAA1	CSF1
CRHR1	F7	CD36
CDK8	MYLK	LIPE
GRM1	MIR21	CASP8
PTAFR	PNPLA2	ARF1
LYN	SOD2	PPARG
ROS1	MAPK14	ALOX15
MAP3K12	TLR2	DMPK
TNK2	TIMP1	CALCA
FKBP5	IL1A	MAPT
GRM4	GPIHBP1	MTTP
GRM5	NPC1	CXCL8
SYK	BGN	MAPK9
GSK3B	NFE2L2	EGR1
UTS2R	IRAK1	SELE
HIPK1	STAT3	ABCB1
CHEK1	SIRT1	CNR1
AVPR1B	PTPN22	STAP1
PTGFR	IGF1	THBD
KDR	FCGR2A	NR3C1
GPR119	APOA4	MTOR
PTGER3	HP	MAPK14
STS	NFKB1	CTSS
GCK	PRKG1	RAF1
SMO	IL1R1	FURIN
TRAP1	TNFRSF1A	CCR2
HSP90B1	EDNRA	SDC4
DRD4	FGF	MPO
FBP2	SLC2A10	PDGFB

MCHR1	GJA4	SCD
DUT	CDH5	CHUK
DHFR	GSTT1	STAT3
HRH4	HOXC-AS1	AMPD1
ALPL	NFIA-AS1	TBXAS1
PSENN1	GSTM1	TGFBR1
CDK2	MIR126	NOX4
CYP1A2	IL1RN	CDC42
MPO	NPPB	TPM1
HCAR2	ALOX5AP	ATM
MAPK14	MAT2A	BMP4
CASP7	MFAP5	AGTR1
EIF2AK3	ITGAM	PPIA
MAPK9	TNXB	ADRB2
EPHX1	JUN	TYRO3
CMA1	HULC	AIF1
PLK2	MAPT	SOAT1
SERTAD1	TXN	CCL2
CHRM5	PIK3CG	ACTN2
OPRD1	SOD1	TLR3
TOP2A	AAT1	POLB
DRD2	AAT2	LTBR
ESR1	IL17A	CASP3
PRSS1	SMAD2	HSP90AA1
RELA	SERPINC1	PARP1
EGFR	NR1H4	VDR
AKT1	CX3CL1	ACE
CCND1	SMAD4	ROCK1
BCL2L1	NOS2	CD34
CDKN1A	SORL1	FASLG
MMP2	APOC1	COL3A1
MMP9	NR1H3	RXRG
MAPK1	TNNI3	KDR
IL10RB	IL4	ABCG2
RB1	RHOA	PTPN1
CDK4	C4A	PPARA
TNFAIP6	NBN	CNR2
IL6ST	GCLM	MGLL
TP53	PPARD	RORA
NFKBIA	SREBF1	TTR
TOP1	RNF213	CCR1
MDM2	MAPK1	MAOB
APP	CBS	LYN

MMP1	CFH	ELK1
PCNA	GGCX	RBP4
ERBB2	CTNNB1	MAP2K5
HMOX1	ALMS1	IGF2
ICAM1	MIR499A	NPC1L1
MCL1	PTX3	UTS2
BIRC5	MIAT	NQO1
IL2	CLU	S1PR1
CCNB1	GSTA4	IL2
TYR	CAV1	FOS
IFNG	TNFAIP3	IFNG
IL4R	FOS	HSPA5
XIAP	PDGFB	FNDC5
SLC2A4	AHSG	CYP27A1
INSR	SOAT2	FGF2
CD40LG	SERPINA3	ICAM1
NUF2	CCL5	CAV1
ADCY2	CDKN2A	BCL2L1
CCNA2	MIR19B1	SLC9A1
ADRA2C	CXCL12	HDAC2
NOS2	KDR	IL6ST
STAT3	KNG1	HSP90B1
EDNRA	PDCD1	HNF4A
DPEP1	PTGS1	HIF1A
DRD5	FGA	RELA
ADRA2B	MIR17	SLC2A4
GABRG3	VCL	NOS3
GABRE	ACTC1	CFTR
FOS	NPY	CAPN5
AHSA1	FLNC	NR1H4
FASN	RAC1	SERPINE1
MYC	STAT4	VCAM1
CYP1A1	CEL	PTAFR
NR1I2	PF4	INSR
NPM1	HFE	ADH1B
ECE1	MIR210	JAK1
PARP4	MMP8	AKT1
CALCR	CEP19	CCR5
ITGB3	NOX1	HPX
CACNA2D1	GP6	MIF
HSD17B1	IGFBP3	ANK3
TFAP2C	MIR590	ITGB3
TOX3	ACTA2-AS1	HSD11B1

SHH	DNMT1	PTGS1
LEF1	CD163	F3
FGFR2	CTSL	NR1I2
AREG	PDE4D	KCNJ5
GPER1	CDKN2B	APOA1
WNT5A	MAPK8	LTA
SOX9	MIR208A	PSEN1
TRIM24	PSEN2	CSF1R
SLC3A2	BRCC3	JUN
GABRB2	FOXE3	AR
GABRB3	ZNF687	BAX
GPR27	GNB3	CDH5
CD36	RAD54L	PRKCA
SDC4	GHRL	CD40LG
CD47	CHIT1	CES1
BICD1	LGALS2	CYP3A4
PDE5A	HGF	SCN5A
PDE11A	MIR140	TP63
PRKCD	CCR5	APP
SCN10A	NDE1	FGF23
TRPV3	FOXP3	PTGIS
OPRK1	ADRB2	CSF2
TRPM8	CCR2	MMP9
TRPA1	HMGB1	TOP1
TNFSF11	ERCC4	RXRΒ
PHB	SOD3	
NEDD4	BLK	
SERPINB3	COG2	
SRC	MIR33A	
UBR5	ALOX15	
CD34	MMP12	
PDGFB	AKT2	
GABRA2	GCLC	
GABRD	KLF2	
CHRNA4	ETS1	
GABRB1	PDGFA	
GRIN3B	APLN	
GRIN2A	MTTP	
CYP11A1	APOL1	
GABRA3	TIMP2	
GABRG1	PPBP	
GABRP	CHEK2	
GRIA2	SERPIND1	

CDH5	PAPPA	
GABRA4	PPARGC1A	
GRIN2C	MIR146A	
GRIN2B	ABCC9	
GABRQ	MYH7	
ORM1	SCN5A	
GRIN3A	GSTP1	
GABRA5	PLA2G2A	
GABRA6	NR1I2	
GABRA1	MTRR	
GABRG2	CSF1	
GRIN2D	FGF23	
CHRFAM7A	FAS	
CRBN	PRKAA2	
ORM2	MIF	
GRIK2	ANGPTL4	
GRIN1	TCF7L2	
FGF10	CTLA4	
APLN	CHUK	
TNFRSF11A	AGTR2	
TP63	PSMA6	
LTA	ITGA2B	
CHRNA9	RAF1	
SERPINB7	CXCR4	
GRIK3	CASP3	
DCT	UTS2	
FBP1	CD5L	
SCN2B	NR3C1	
GPD1L	NOTCH1	
HMGA2	LCN2	
CDK5R2	MSTN	
NDRG2	SRC	
GRIA4	DCN	
PAX3	IL2	
NAMPT	SELL	
APOA2	PRKAA1	
DIXDC1	GPX1	
RGCC	SELPLG	
SEMA4D	CCL13	
CSF1R	CYP11B2	
CAPN5	NPPA	
CD74	SIRT6	
SCN3B	UCP2	

FNDC5	EDNRB	
NAV2	SHBG	
NFIB	CDH13	
HPX	HNF4A	
ARPIN	NFKBIA	
MIF	FABP2	
AVPR1A	TOR2A	
GRIA1	UCP1	
FASLG	MAPK10	
CCL5	NEXN	
ANK2	MIR92B	
LGALS3	GUCY1A1	
KLF4	ITGA2	
CLDN5	CCL11	
FZD2	THSD1	
METRNL	MEF2C	
ID2	SLC12A4	
LILRB1	SRFBP1	
NCKAP1L	LIPE-AS1	
FGF7	LOC101930071	
BMP15	LOC113939944	
TLR3	COMT	
TH	LRP8	
SOX17	TNFSF11	
BCL11A	CHI3L1	
NPR3	FGG	
MEF2C	ESR2	
MAP2K5	PGF	
KCNA1	ABCA4	
EIF2AK1	PTGIS	
IL1B	HDAC9	
DICER1	PLN	
PTGIS	DNASE1	
SOSTDC1	BMP4	
RIPK1	VKORC1	
FOXP3	CASR	
S1PR2	KL	
NPY5R	ANXA5	
FADD	TTN	
GREM1	ACE2	
PLAAT1	C3	
HEG1	IGFBP1	
ASXL2	CES1	

PEX14	GPT	
TBR1	RELA	
WNT2	SOCS3	
HAS2	NPC2	
PROC	XBP1	
FCER2	TREM1	
LEP	APP	
WNT2B	CP	
EGF	SERPINA1	
STAP1	MEF2A	
TGFB2	ABCG4	
TIRAP	LGALS3	
ADIRF	XDH	
CHRNE	CXCL16	
ANK3	BRCA1	
KCNE5	MTR	
COLQ	DPP4	
MMP28	GP1BA	
SMAD7	CAPN10	
INS	ITGB2	
ACE	ITGB1	
PHF14	MAPK3	
SCN4B	APBB1	
FGFR4	SQSTM1	
GLI3	MYD88	
WNT11	CLEC4A	
STAR	ATM	
CAV3	IL12A	
IL10	BCL2	
ADCY3	NPPC	
CDC20	SMARCA1	
RYR3	ELANE	
ROCK1	GGT1	
PNPT1	IRF5	
GRIK5	GDF15	
GRIK4	RARRES2	
KMT2A	CYBB	
GRIA3	CAV2	
FOXL2	STAT1	
NOD2	GSTO1	
FZD1	CCN3	
BMP4	CSF2	
APOA1	FNDC5	

CDC42	LTA4H	
MECOM	STAP1	
FGFR3	IKBKG	
KDM6B	THBS1	
RYR2	HIF1A	
CPLX2	HSPA4	
SRSF6	MYH6	
ANXA1	ALDH2	
CALCA	ANTXR1	
KCNQ1	TGFBR3	
CASQ2	AGXT	
GRIK1	HGD	
PEX5	ANGPTL6	
KISS1	ECE1	
GRM7	PMM2	
CCM2L	CASP1	
NOTCH2	PTEN	
PROZ	CYCS	
AGTR2	TNFSF10	
AGTR1	TFPI	
CBR4	PIK3CB	
PAX2	VLDLR	
DAB2	C4B	
WLS	FAM186A	
ACTN2	MIR193B	
ADCY6	MIR1306	
CSF1	MIR660	
IL34	LINC01362	
UTS2	LINC00400	
WT1	LINC01361	
HNF1B	C5	
COMT	MECP2	
PKD2	IL33	
AQP2	FGF21	
MC4R	MIR10A	
CRHBP	ABCB1	
ACE2	USF1	
BMP6	PHACTR1	
SIPA1	MIR182	
AMELX	CYP7B1	
EGR1	ROCK1	
GAS6	CSF3	
TFPI	RSAD2	

KCNK4	IL13	
CCS	IKBKB	
ARRB1	ITGAV	
AIF1	FASLG	
NMUR2	BMPR2	
ACSL4	KLF4	
RET	MYBPC3	
MC5R	NKX2-5	
MC3R	HAND2	
NCK2	VTN	
NCK1	ADM	
IMPDH1	CR2	
IMPDH2	NCF1	
CHRNA10	NOX4	
ACVR1	CCL3	
ADCY1	GCK	
AMHR2	NOS1	
TNKS2	FN1	
ABL2	PIK3CA	
ABCC9	IL1R2	
ABL1	SDC4	
CDK15	MBL2	
ACSL1	TIMP3	
ABCA1	CDKN1A	
ABCC8	APOM	
ALK	PTH	
ABCG1	TLR9	
ARAF	CXCL10	
AKT3	POLR1C	
AKT2	NINJ1	
ADA	ANKRD1	
ITFG2	FLT1	
TBXA2R	FABP3	
PLA2G5	CXCL1	
ELAVL1	ADD1	
HSD17B3	CYP2J2	
HDAC2	IL20	
SAE1	F8	
KAT2B	AGXT2	
CCR1	BGLAP	
CYP2D6	PLA2G1B	
HNF4A	SUPT3H	
LDLR	PLA2G10	

NOX4	CHST1	
PTPN11	PARP1	
PTPRC	MTOR	
NQO2	IL37	
CES1	MMP14	
TERT	MMP13	
BRD2	FCGR3B	
BRD3	ALOX12	
PABPC1	SLC2A9	
PTGER2	TFEB	
CDC25C	KIAA0319L	
BRS3	BSG	
IDH1	S100A12	
EIF4H	GAS6	
TNF	MYOCD	
POLB	H2AC18	
TUBB1	ANGPT1	
CA3	MC4R	
CA5A	FDFT1	
FUT7	GRAMD1C	
GLO1	F2R	
MMP12	SOCS1	
CYP1B1	SLC2A4	
ABCG2	ACVRL1	
AKR1B10	DES	
TNKS	ARID5B	
PTPRS	AR	
ABCC1	CTSB	
CDK6	PRKDC	
ABCB1	SDC2	
CFTR	GCKR	
GRK6	B2M	
CDK1	DUSP1	
AHR	CPE	
ESRRA	LIPI	
GPR35	SULT1A3	
AVPR2	MAPK7	
DAPK1	CD86	
MMP13	SLC17A4	
MMP3	CXCR2	
AXL	EGR1	
NUAK1	AHSP	
PFKFB3	EGFR	

PLGLA	PROC	
KDM4E	LAMP2	
PREPL	MIR196A2	
FABP1	VDR	
ACP1	MALAT1	
CD81	TNFRSF1B	
PTPN22	COX5A	
PHOSPHO1	HSP90AA1	
GPR39	PAOD1	
VCAM1	MFGE8	
PBRM1	ACTN2	
SMARCA4	CSRP3	
VCP	PLCG1	
MMP8	CD34	
MPI	BDNF	
PRF1	GSR	
NR4A1	HELLS	
ATP2A1	SLC10A2	
GSTM1	RYR3	
TTL	COL4A1	
IARS1	MME	
DUSP3	TERT	
CAPN1	PLG	
CTSG	MIR33B	
PER2	IL2RA	
CASP1	ITLN1	
VAV1	LBP	
CASP6	TNFSF12	
DNTT	MAPK12	
C5AR1	TRAF6	
FGFR1	RHOD	
MUSK	PLAUR	
CTSK	IL15	
CTSS	TP63	
KIF11	FCGR2B	
PRMT3	GALT	
CYP2C9	EIF2B2	
NUDT1	UBE2L3	
GCGR	CLCN1	
F2R	BRDT	
TYMS	PEX6	
MAP3K11	ATRIP	
LIPE	STAG3	

ST6GAL1	TREX1	
MAP3K14	CCT7	
CCR5	PREPL	
S1PR1	TNIP1	
MAP3K5	JAZF1	
PRCP	PXK	
MALT1	BANK1	
NAT1	MSH4	
TDP2	INSL6	
HDAC6	SGO2	
HDAC3	ATRIP-TREX1	
HDAC8	SLEB3	
HDAC1	CHDS1	
FAP	CHDS2	
CFD	CHDS3	
MMP14	CHDS4	
CPT1A	CHDS8	
FKBP1A	CHDS9	
TDO2	SLEB4	
CAPN2	SLEB5	
GPR139	SLEB7	
CDK9	SLEB8	
CCR3	SLEB15	
PPOX	SLEB12	
HRH2	SLEB13	
ACP3	SLEB14	
OPRL1	MCI2	
AMPD3	FBLN5	
PTGER1	CCDC71L	
KDM4C	CYP46A1	
CTSC	ANGPT2	
DHODH	IL12B	
PTGER4	IRS2	
PLAUR	CD59	
FADS1	NR4A3	
ALKBH3	AOC3	
KCNK3	ABCA12	
KCNK9	SPEG	
S1PR3	NR3C2	
NR1I3	SCAP	
AMPD1	LMF1	
LDHA	HTR2A	
LDHB	MIR221	

MME	DSP	
AMPD2	TPM1	
SELPLG	DMD	
CAMKK2	DSG2	
THRA	SGCD	
KDM3A	TMPO	
MKNK2	BAG3	
NEU3	EYA4	
HDAC4	TCAP	
GSTM2	TSFM	
UQCRB	LDB3	
MGLL	TMEM43	
MAP3K8	HEY2	
VEGFA	PPP1R13L	
FGF1	NDUFAF2	
FGF2	FKTN	
HPSE	RBM20	
NAE1	CEP85L	
MPG	TAFAZZIN	
SLC22A12	PGBD3	
ODC1	HAND2-AS1	
ESRRB	TTN-AS1	
ADCY10	DSG2-AS1	
GPR55	MHRT	
GPR18	ERCC8-AS1	
SLC22A2	LOC106780803	
SRD5A2	MYMY4	
CXCR3	SP1	
CXCL8	TTR	
PRKCB	ADAM17	
IGF2	GAS5	
GSTA2	MASP2	
EIF6	ADAMTS1	
ELK1	SPARC	
RAF1	P2RY12	
SOD1	TLR7	
HIF1A	ABCC1	
STAT1	KEAP1	
RUNX1T1	AKR1B1	
HSPA5	GSTM3	
ACACA	GSTM2	
CAV1	GSTM5	
F3	GSTM4	

GJA1	PRTN3	
CCL2	SORT1	
SELE	RHBDF2	
DUOX2	RBP4	
NOS3	AHR	
HSPB1	CLEC1A	
PLAT	HSPA14	
THBD	NUDCD1	
SERPINE1	S100A9	
IL1A	NOS1AP	
NCF1	PROCR	
NFE2L2	CYP2E1	
NQO1	ADPRH	
PARP1	ADAMTS7	
PSMD3	NRG1	
COL3A1	NQO1	
CXCL11	G6PC2	
CXCL2	LRP6	
DCAF5	ALOX15B	
CHEK2	GCG	
CLDN4	ABO	
HSF1	SLC30A8	
CXCL10	PRKCB	
CHUK	MB	
SPP1	PTK2	
RUNX2	PNLIP	
RASSF1	SAA4	
E2F1	MMP7	
E2F2	FTO	
CTSD	IL6R	
IGFBP3	PLAU	
IRF1	SERPINF1	
ERBB3	TERF2	
DIO1	ARG2	
PCOLCE	THBS4	
NPEPPS	LIPF	
HK2	CTH	
RASA1	MIR92A1	
CSNK2A1	EGF	
CRYZL1	CXCL9	
VKORC1	PTPN1	
TRPV1	MIR214	
FADS2	SERPINA12	

PDE7B	MIR34A	
PDE9A	BMP2	
PDE4A	POMC	
RYR1	XRCC5	
ITPR1	BMP6	
PDE6A	KISS1	
PRKDC	LTB4R	
PDE3B	PINX1	
PDE1A	BAX	
PDE4D	MIR122	
ITPR2	TAGLN	
PDE1B	PRL	
PDE7A	TNFRSF4	
ITPR3	HSP90B1	
PDE4C	IFNA1	
PDE1C	LEPR	
PDE6B	FOXO3	
PDE4B	PALLD	
PDE2A	BHMT	
PDE8B	APCS	
PDE6C	FUT3	
PDE8A	F9	
RINT1	SLC9A1	
HAP1	CXCR3	
PRLR	RECK	
ACTN3	CNR1	
TACC1	ADIPOR1	
SIRT1	HSPA5	
DGKI	FOXO1	
FURIN	HNF1A	
STUB1	NCF2	
CTR9	IRS1	
SIX1	CACNA1C	
SYT2	TET2	
SIX4	DNAH8	
SIRT2	SLC17A5	
SPI1	S100A8	
XRCC4	MAP3K5	
UBE2B	MACROD2	
HCN4	FURIN	
EDN1	MERTK	
CETN2	GRN	
CETN1	NOD2	

NUDT9	CCR7	
BMP2	RXRA	
FER	TNFRSF10A	
KCNB1	MIR29A	
ADAM8	IGF2	
VTI1A	MTNR1B	
ADAP2	TPO	
AURKA	ARG1	
MCM3	LPXN	
GHRL	INSIG2	
HIPK2	POSTN	
TET1	NPC1L1	
C2CD5	THBS2	
CSF2	HTRA1	
KIT	MT-CYB	
BNIP3	IRF7	
GATA3	PIK3R1	
ZFP42	MAPK9	
UCN2	TNC	
RAB8B	MTHFD1	
DKK3	CCL4	
AQP1	CALR	
DPPA3	HBEGF	
CASQ1	ADORA2A	
HPS4	FGF2	
TKT	PIK3C2A	
ADAP1	SCD	
EDA	VEGFB	
SELENOP	PRKAG2	
NOS1	CD44	
TREM1	SRF	
TAL1	TSPO	
PAWR	PDGFRA	
BMP5	FCAMR	
RTN2	INSR	
CD63	CD68	
LAMP2	ADH1C	
GLYR1	HSPB1	
GNAS	IDO1	
NCBP2	MIR142	
TPM1	F13B	
PCSK6	NECTIN2	
REST	COL8A1	

HCN2	CHST2	
NFX1	XRCC6	
SOAT1	PRKAB1	
ADH1A	NR4A1	
COX6C	KCNQ1	
COX5B	CD4	
COX7C	GSK3B	
ADH1B	CTSS	
COX5A	TRAF2	
ADA2	PTGDS	
COX7B	CCN2	
COX8A	PIGR	
HIBCH	MGLL	
PIM1	MIR30C1	
HCK	MDM2	
CALY	ABCA7	
GLRA2	JAK1	
KCNJ3	TNFSF13B	
KCNJ6	ACTG1	
KCNJ5	MIR30A	
KCNJ9	ATF3	
SOAT2	VCP	
MTTP	PLIN1	
HSPA1L	MAP3K7	
DAO	MAP2K4	
SNCA	PIK3R3	
MAPT	H2AX	
MYLK	PLA2G2D	
ATP12A	IL6ST	
PTGIR	F11R	
FFAR1	OSM	
LTB4R	KLF5	
AKR1C2	NEBL	
RBP4	PROS1	
DAGLA	AMPD1	
CEL	SAMSN1	
ABHD6	HHIPL1	
PLA2G7	ACTB	
BACE2	ELAVL1	
ACACB	GNAS	
ITK	ACTA1	
REN	GC	
BTK	CREB1	

ACER2	YAP1	
CCR2	SOST	
ASAH1	CALCA	
CALCRL	PPP1R3A	
ARF1	MMP10	
MDM4	ABCA3	
TYRO3	CD274	
SUMO1	MIR222	
HIPK4	PTPRC	
SBK1	PPIA	
DAPK3	HSPA12B	
CDK7	TLR6	
RPS6KA4	FMN2	
IRAK1	PLIN2	
STK17B	CMA1	
STK10	EP300	
EPHA5	NGF	
EPHA8	GJA1	
SLK	HSPA1A	
FRK	ID3	
STK36	SRA1	
TXK	CAMP	
STK17A	SCNN1A	
EPHA6	C2	
EPHA3	ATG9B	
EPHB1	RPA1	
IRAK3	TRAF1	
MAPK6	CDC42	
DMPK	PDGFRB	
NLK	FCGR3A	
MINK1	SAA2	
CIT	RTN4	
LTK	CXCL13	
NUAK2	HABP2	
SIK2	C1QTNF9	
MAPK4	HPSE	
EPHA1	ST3GAL4	
MAP3K2	ADAMTS4	
MAP3K3	COL5A1	
DCLK3	GPBP1	
MAP3K19	ACP5	
PAM	TNFRSF9	
P2RX3	MCAM	

MAST3	ITGA4	
AURKAIP1	MYLIP	
PTGDR	WDFY4	
SLC5A1	IL5	
EIF4A1	KCNJ11	
SLC28A3	CACNA2D1	
MMP7	MIR143	
HRH1	CCR1	
CENPE	MEFV	
HAO1	LBR	
KDM2A	APLNR	
PHF8	DDAH2	
KDM5C	LAMA4	
PSEN1	RXRG	
RXRB	TRIB3	
RXRG	APOD	
MC1R	LY96	
EPAS1	KISS1R	
CETP	C5AR1	
LSS	IL32	
	CYP19A1	
	CCL15	
	FGF19	
	CXCR6	
	PRKCZ	
	TFAP2A	
	NOTCH3	
	CD28	
	CSF1R	
	ZNF202	
	CALM1	
	SDC1	
	TOP1	
	FEN1	
	BMPR1B	
	TRPV4	
	AGPAT2	
	ADH1B	
	GRK4	
	LEPQTL1	
	RXRB	
	EIF2S1	
	RUNX2	

	WWTR1	
	BCL2L1	
	CDKN1B	
	TNFSF13	
	F11	
	CNR2	
	UCP3	
	RGS2	
	LTB4R2	
	CARD8	
	HS3ST1	
	SUCNR1	
	LPAL2	
	PTGES	
	XPA	
	BSCL2	
	SYNE2	
	MIR199A1	
	ADRB3	
	HMCN1	
	ADAM10	
	BLM	
	MAP2K6	
	CALM3	
	CASP8	
	MIR30C2	
	SST	
	LYN	
	RAC2	
	PLIN3	
	GCH1	
	SORCS1	
	HAMP	
	DGAT1	
	HLA-DQB1	
	PSRC1	
	ICMT	
	FEM1A	
	FADS1	
	SGCB	
	CDKN1C	
	IGFBP2	
	ATF4	

	GAPDH	
	RECQL4	
	AKT3	
	MAPK13	
	MAP2K7	
	HSP90AB1	
	IFNB1	
	PRKCE	
	APEX1	
	ACVR1	
	ACVR2A	
	ABCD1	
	CRYAA	
	M6PR	
	CH25H	
	UTS2R	
	TFPI2	
	IL23R	
	MIR19A	
	PTPN11	
	RAP1A	
	RAP1B	
	NFKBIB	
	LMNB1	
	SYNE3	
	LIAS	
	GHSR	
	PCSK5	
	FASN	
	NAT2	
	ADAMTSL1	
	MAOB	
	C9orf72	
	CYP2B6	
	ITGA5	
	GLP1R	
	IL23A	
	VCAN	
	SAMD1	
	GPR132	
	CD80	
	EMD	
	CBX5	

	LMNB2	
	CIDEC	
	SYNE1	
	SUN1	
	SUN2	
	HBB	
	WNT5A	
	TEK	
	CD69	
	ERN1	
	POU2F1	
	CXCL3	
	S1PR1	
	SIRT2	
	ATP2A2	
	TPM2	
	PNPLA3	
	PRDX5	
	ZFPM2	
	NEAT1	
	GPB1	
	ARMS2	
	RORA	
	CTSK	
	ILK	
	BRAP	
	CYP27B1	
	ADRB1	
	PLA2G3	
	TRIB1	
	SH2B3	
	GDF2	
	IRF2BP2	
	CFTR	
	RAD51	
	MLH1	
	POLB	
	EXO1	
	TERF1	
	MRE11	
	RAD52	
	RECQL	
	DHX9	

	RECQL5	
	WRNIP1	
	PURG	
	PIK3CD	
	PIK3R2	
	MAPK11	
	CALM2	
	CALML3	
	CALML5	
	CALML4	
	CALML6	
	ICOS	
	ASS1	
	C1S	
	MIR29B1	
	TYRO3	
	MCPH1	
	ARF1	
	ABHD5	
	PITPNA	
	PNPLA5	
	LIPK	
	LIPJ	
	LIPM	
	VSTM4	
	LOC121331340	
	HLA-DQA1	
	CAVIN1	
	SLC2A1	
	F2RL1	
	SSTR2	
	IGF2BP2	
	CDKAL1	
	MTHFD1L	
	MARS1	
	TLR1	
	DKK1	
	PCSK2	
	HSPB2	
	CCR3	
	CD79A	
	RICTOR	
	SERPINF2	

	ADORA2B	
	S1PR2	
	MT2A	
	APOBEC1	
	HPX	
	LTBP1	
	CD55	
	IL19	
	NR4A2	
	TGM2	
	CTNNA1	
	CXADR	
	COPS5	
	FMO3	
	CCL19	
	MIR181B1	
	CSN1S1	
	CANT1	
	ATF6	
	MAP2K5	
	GSTO2	
	PIAS4	
	ACAN	
	PRPS1	
	RFC1	
	LAMA1	
	TP53BP1	
	LPAR3	
	RAN	
	ANK3	
	SPG7	
	TWIST2	
	UBA7	
	LEMD3	
	NUP153	
	NAT10	
	CLMP	
	RCE1	
	MIR9-1	
	TLR3	
	MIR30E	
	MIR144	
	FABP5	

	TBK1	
	PTAFR	
	LDB2	
	IL9	
	IFNA2	
	IL20RA	
	FST	
	SERPING1	
	AMH	
	CXCR5	
	IGF2-AS	
	MIR99A	
	EFEMP1	
	LTB	
	MIR150	
	PRDM16	
	MIR223	
	HBA1	
	CAV3	
	GLB1	
	HSD11B1	
	PDGFC	
	NFKB2	
	LRP5	
	SLC11A1	
	MIR124-1HG	
	JUP	
	CTNNA3	
	SYNM	
	ITIH4	
	F10	
	TBX20	
	BCAR1	
	MIR92A2	
	TNFAIP6	
	BMPER	
	lnc-KDM5D-4	
	IFNGR2	
	TCN2	
	KCNK1	
	MS4A2	
	ADAM33	
	INSIG1	

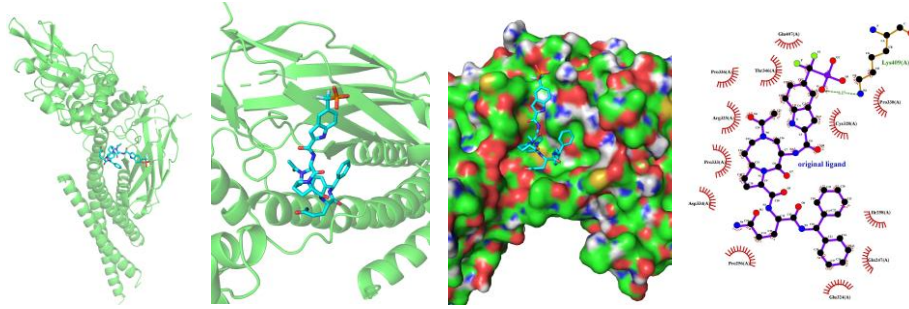
	LGMN	
	MIR19B2	
	G6PD	
	SFTPD	
	KIF6	
	FPR2	
	IL24	
	SUMO1	
	GPC1	
	CTF1	
	CHGA	
	CACNA1H	
	IFNGR1	
	DMPK	
	PRKAG1	
	PAX6	
	SCNN1B	
	AMPD2	
	PRKAB2	
	SCNN1G	
	RGS9	
	CAPN5	
	MSH3	
	PDYN	
	MYO7A	
	PRKAG3	
	CMKLR1	
	PLEKHA1	
	TCN1	
	BHMT2	
	KCNK2	
	PGLYRP1	
	NFKBIE	
	MIA3	
	MRPL10	
	TSLP	
	FEM1B	
	OLFML2B	
	RGS9BP	
	F12	
	CASP9	
	DDIT3	
	TAT	

	CCDC92	
	NOTCH2	
	ORAI1	
	CD70	
	FCN2	
	MIR638	
	RELN	
	SCARB2	
	FMOD	
	OGN	
	NCOA2	
	AIF1	
	SELENOS	
	HSD3B7	
	FDX1	
	PRKCA	
	TF	
	STK11	
	NUMB	
	HYAL1	
	ADAMTS5	
	LCT	
	ABI2	
	DNAH5	
	LECT2	
	LRRC18	
	UTP20	
	EPO	
	DNM2	
	LRIG1	
	ZHX2	
	RPL21P41	
	HBP1	
	CBL1	
	LINC02577	
	ENSG00000243797	
	ENSG00000267052	
	PRMT5P1	
	HSALNG0060378-001	
	lnc-PIK3CG-6	
	HSALNG0060385	
	APOBR	
	IFIH1	

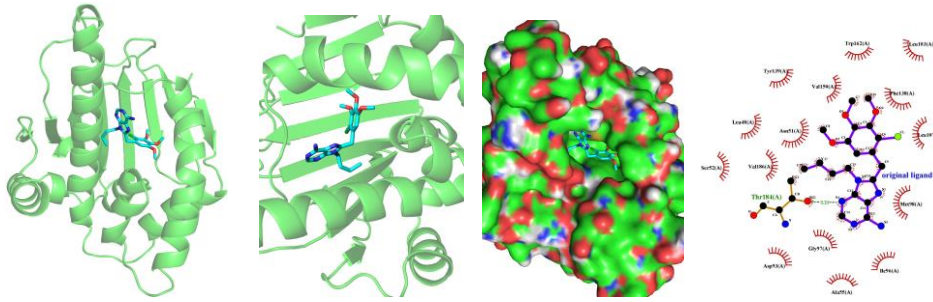
	HAVCR1	
	SLAMF7	
	ZFHX3	
	GPD1	
	DPH3	
	P2RX7	
	MIR216A	
	LYVE1	
	IBSP	
	FRS2	
	NOX5	
	GZMB	
	SERPIN1	
	ANGPTL2	
	CCL21	
	CUBN	
	POU2F3	
	SCARA3	
	SDHB	
	PRKAR1A	
	RPS6KA1	
	RALBP1	
	CNTN1	
	ADAM8	
	ZBTB20	
	CXCL5	
	PAFAH2	
	TUSC1	
	CDKN3	
	TBXAS1	
	ELK1	
	HSPA8	
	TXNRD1	
	IL17B	
	CIITA	
	ACVR2B	
	BMPR1A	
	ARHGEF2	
	RAC3	
	TXN2	
	GSTA3	
	MGST2	
	GSTA1	

	GSTA2	
	MGST1	
	MGST3	
	SUMO3	
	SUMO4	
	SUMO2	
	GSTA5	
	GSTT2B	
	GSTT2	
	GH1	
	NFAT5	
	CCL1	
	FABP12	
	NR1I3	
	STAR	
	GLO1	
	KCNN4	
	NFATC2	
	HDAC3	
	ACKR3	
	LRRIQ3	
	IRF3	
	VEGFC	
	GATA4	
	MT-ATP6	
	MIR217	
	MIR212	
	PRNP	
	IL27	
	ITGAX	
	MIRLET7G	
	FLACC1	
	OTSC6	
	OTSC9	
	OTSC1	
	OTSC2	
	OTSC3	
	OTSC4	
	OTSC7	
	OTSC5	
	MPV17	
	TSC1	
	MS	

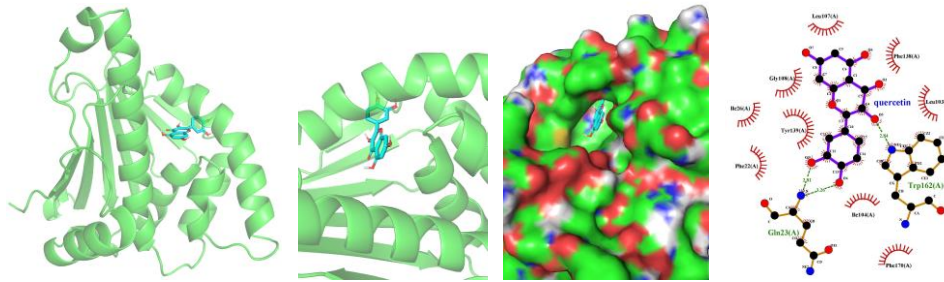
	ALS5	
	ALS3	
	C2CD6	
	CARF	
	RAPH1	
	ALS2	
	TSC2	
	SOSTDC1	
	TYS	
	ZNRD2	
	EXOSC9	
	EXOSC10	
	FGFR1	
	SQLE	
	HTR1A	
	HTR2B	
	FGF1	
	MYC	
	CFB	
	GRIA	
	p38	
	PK	



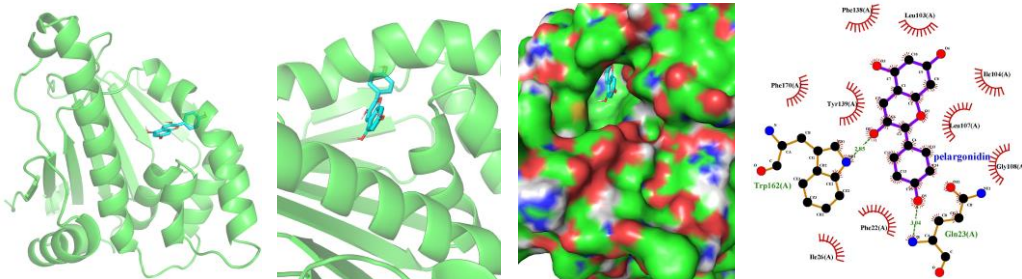
1. STAT3- original ligand



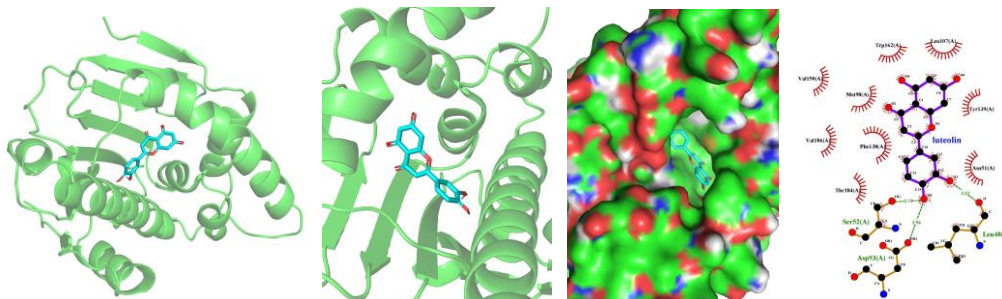
2.HSP90AA1- original ligand



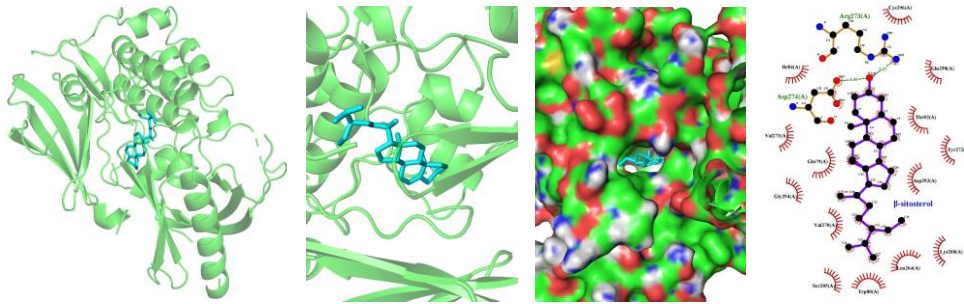
3.HSP90AA1-quercetin



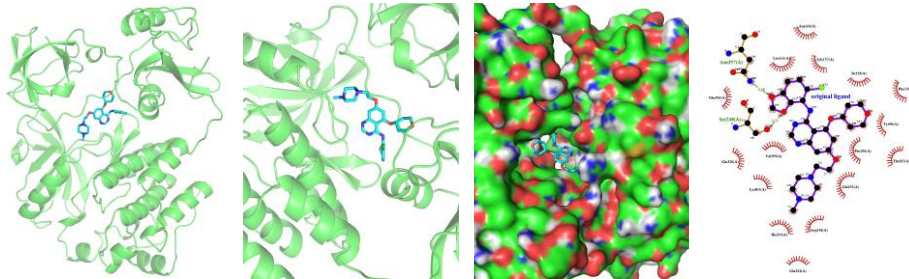
4.HSP90AA1-pelargonidin



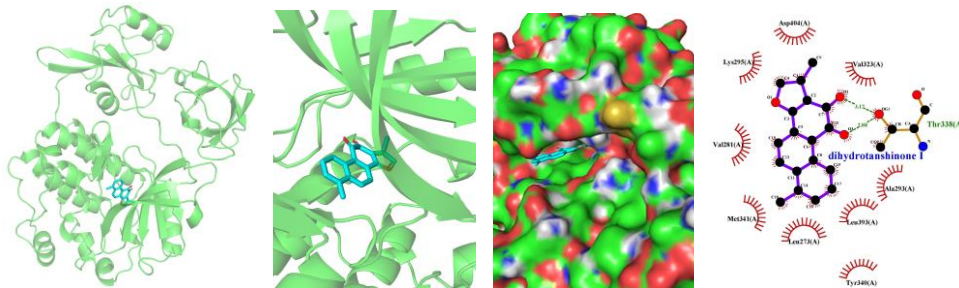
5.HSP90AA1-luteolin



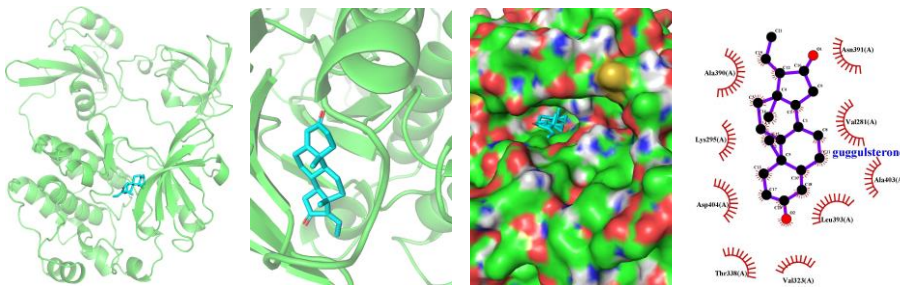
11.AKT1- β -sitosterol



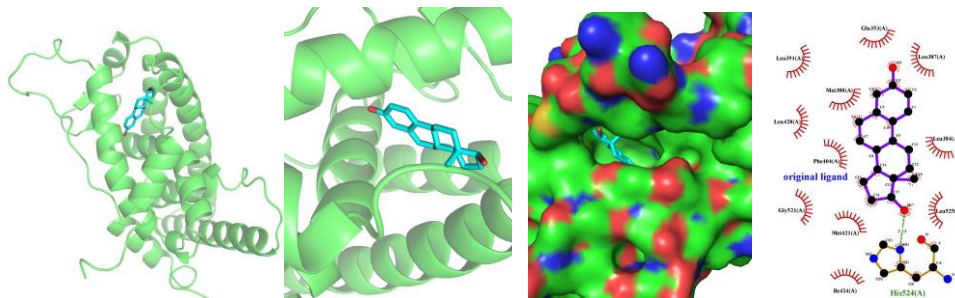
12.SRC- original ligand



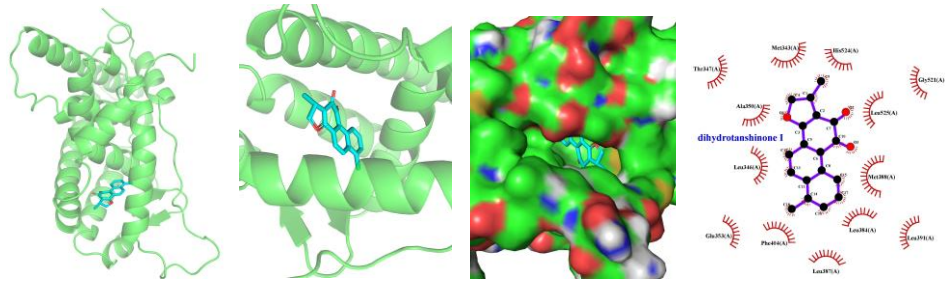
13.SRC- dihydrotanshinone I



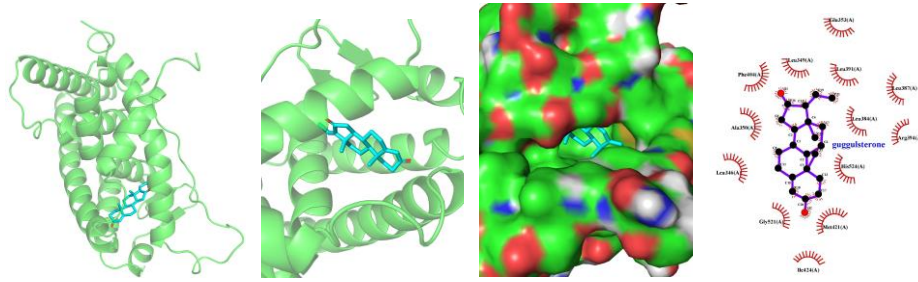
14.SRC-guggulsterone



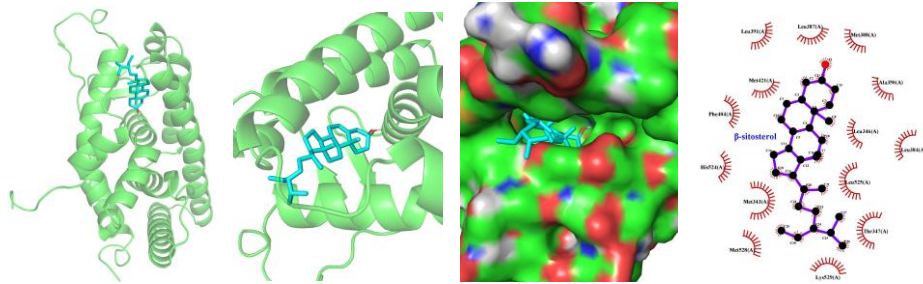
15.ESR1- original ligand

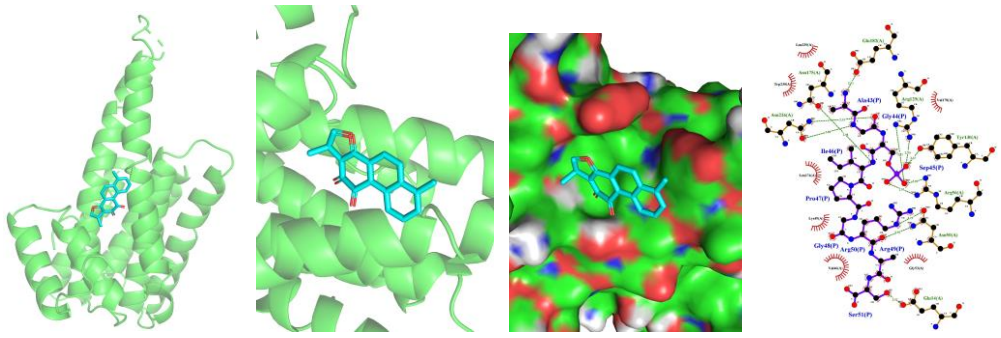


16. ESR1- dihydrotanshinone I

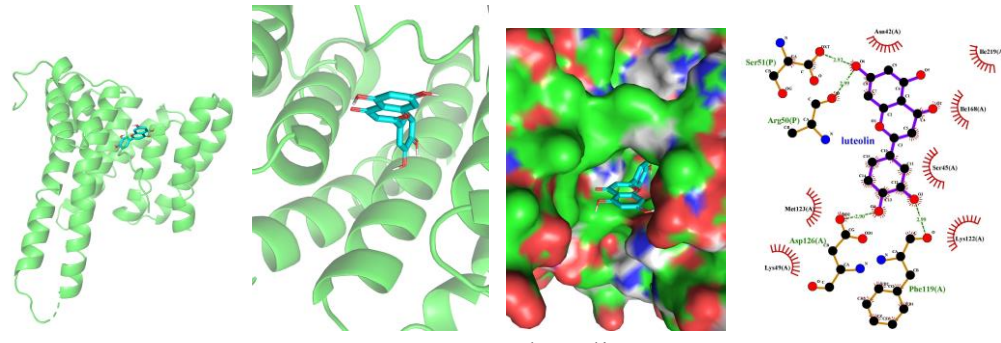


17. ESR1- guggulsterone

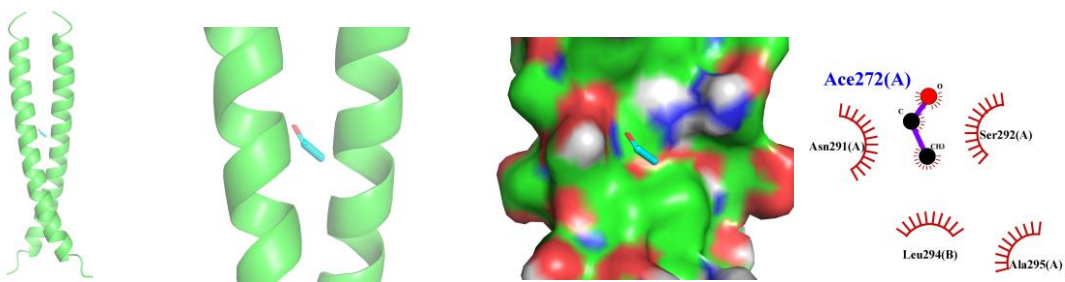




21. RELA- dihydrotanshinone I



22. RELA- luteolin



23. JUN- original ligand

