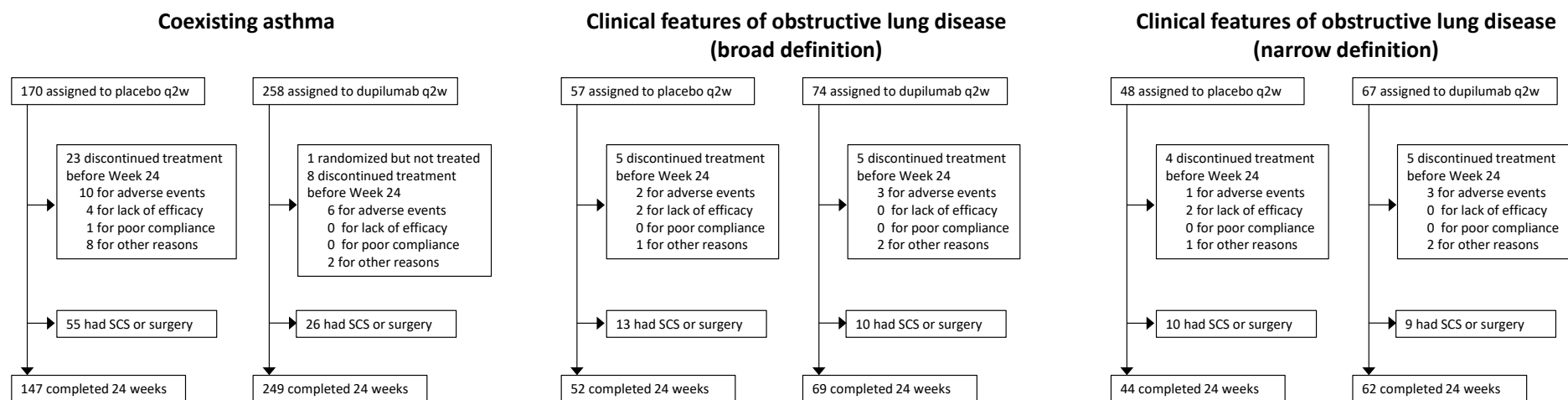


Supplementary Figure 1 Flowchart of patient disposition



Abbreviations: SCS, systemic corticosteroids; q2w, every 2 weeks

Supplementary Table 1 Effect of dupilumab on lung function as assessed by pre-bronchodilator FEV₁ and FEV₁/FVC in patients with CRSwNP with asthma and in patients with CRSwNP, asthma, and clinical features of obstructive lung disease

	Asthma and clinical features of obstructive lung disease					
	Asthma		(Broad Definition)		(Narrow Definition)	
	Placebo (n = 170)	Dupilumab (n = 258)	Placebo (n = 40)	Dupilumab (n = 50)	Placebo (n = 31)	Dupilumab (n = 43)
FEV₁						
Baseline, n	169	258	40	50	31	43
FEV ₁ , mean (SD), L	2.62 (0.83)	2.61 (0.92)	2.45 (0.76)	2.43 (0.92)	2.36 (0.76)	2.33 (0.79)
Week 16, n	166	253	40	49	31	42
FEV ₁ , mean (SD), L	2.57 (0.81)	2.76 (0.86)	2.35 (0.83)	2.69 (0.83)	2.28 (0.88)	2.67 (0.87)
LS mean change from baseline (SE)	-0.07 (0.03)	0.15 (0.03)	-0.07 (0.08)	0.31 (0.08)	-0.04 (0.10)	0.36 (0.11)
LS mean difference vs placebo (95% CI)	0.22 (0.15, 0.29)		0.38 (0.17, 0.59)		0.40 (0.20, 0.61)	
Nominal p vs placebo	<0.0001		0.0004		0.0001	
Week 24, n	163	252	40	49	31	42
FEV ₁ , mean (SD), L	2.57 (0.80)	2.76 (0.91)	2.40 (0.83)	2.66 (0.81)	2.34 (0.88)	2.65 (0.84)
LS mean change from baseline (SE)	-0.07 (0.04)	0.14 (0.03)	-0.03 (0.08)	0.27 (0.08)	-0.02 (0.09)	0.28 (0.10)
LS mean difference vs placebo (95% CI)	0.21 (0.13, 0.29)		0.29 (0.09, 0.49)		0.30 (0.11, 0.49)	
Nominal p vs placebo	<0.0001		0.0039		0.0016	
FEV₁/FVC						
Baseline, n	169	258	40	50	31	43
FEV ₁ /FVC, mean (SD)	0.72 (0.10)	0.71 (0.10)	0.68 (0.10)	0.65 (0.09)	0.64 (0.09)	0.62 (0.07)
Week 16, n	166	253	40	49	31	42
FEV ₁ /FVC, mean (SD)	0.72 (0.10)	0.73 (0.09)	0.67 (0.12)	0.69 (0.08)	0.64 (0.12)	0.68 (0.08)

LS mean change from baseline (SE)	<0.01 (0.01)	0.02 (0.01)	<0.01 (0.01)	0.05 (0.01)	0.03 (0.02)	0.09 (0.02)
LS mean difference vs placebo (95% CI)	0.03 (0.01, 0.04)		0.05 (0.02, 0.08)		0.06 (0.03, 0.10)	
Nominal p vs placebo	<0.0001		0.0024		0.0003	
Week 24, n	163	252	40	49	31	42
FEV ₁ /FVC, mean (SD)	0.72 (0.10)	0.74 (0.09)	0.67 (0.12)	0.69 (0.07)	0.65 (0.12)	0.67 (0.06)
LS mean change from baseline (SE)	<0.01 (0.01)	0.02 (0.01)	<0.01 (0.01)	0.04 (0.01)	0.02 (0.02)	0.06 (0.02)
LS mean difference vs placebo (95% CI)	0.02 (0.01, 0.04)		0.04 (0.01, 0.07)		0.04 (0.01, 0.08)	
Nominal p vs placebo	0.0014		0.0235		0.0152	

Notes: Patients with baseline and post-baseline FEV₁ and FVC assessments at either Week 16 or Week 24 were included in the analysis.

Abbreviations: CI, confidence interval; CRSwNP, chronic rhinosinusitis with nasal polyps; FEV₁, forced expiratory volume in 1 second; FVC, forced vital capacity; LS, least squares; SD, standard deviation; SE, standard error.