

Supplementary material

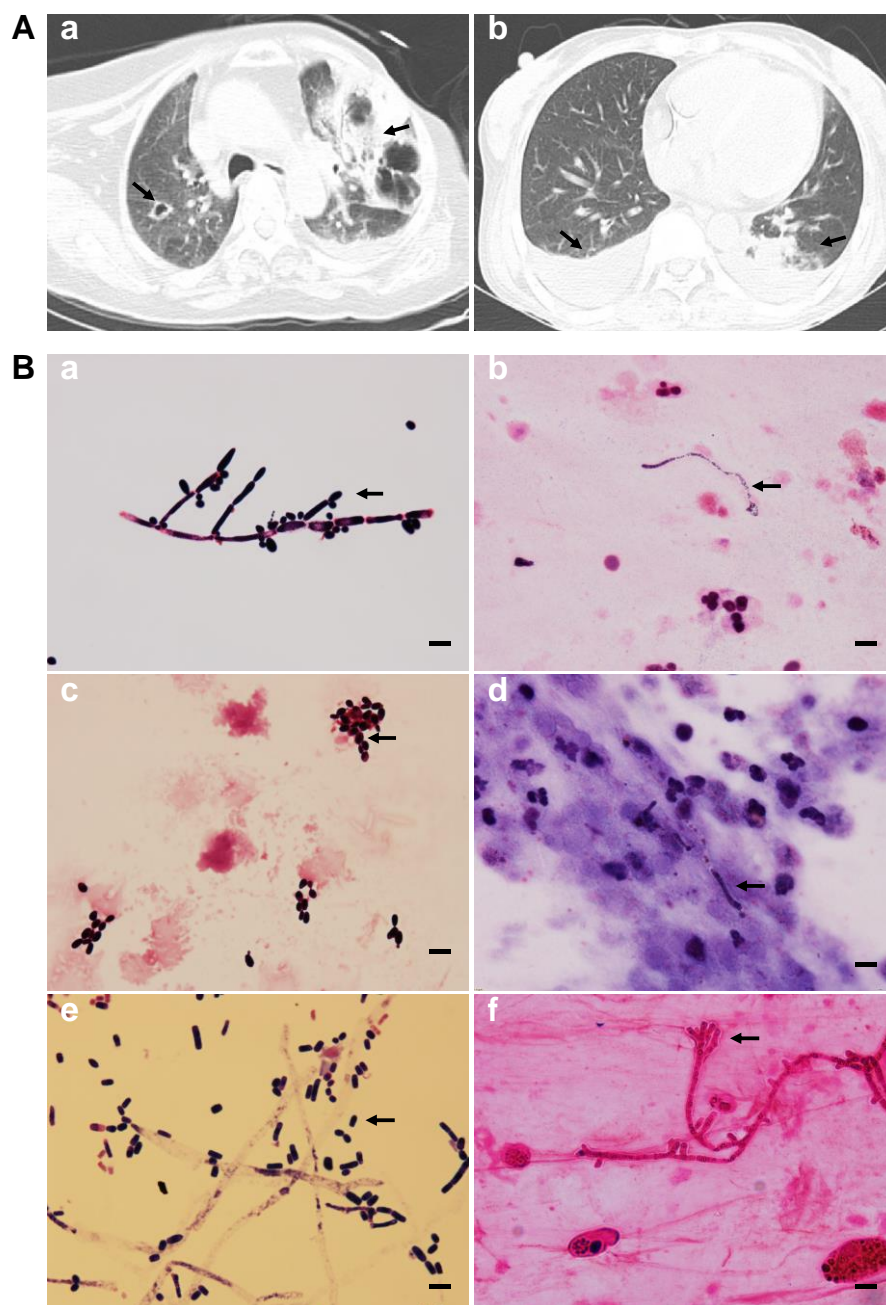


Figure S1 Representative clinical and mycological features of patients with clinically diagnosed invasive fungal infections in the study. **(A)** Chest CT imaging data of patients with fungal pneumonia of *Aspergillus flavus* featured with ground-glass opacity, pulmonary nodular infiltration, cavity and air crescent sign. (a); or with pneumonia of *Candida tropicalis* with pulmonary inflammation and pleural effusion (b). **(B)** Gram staining data of the indicated fungal isolates; (a) *Candida albicans* from urogenital specimen, (b) *Candida albicans* from respiratory specimen, (c) *Candida glabrata* from urogenital specimen, (d) *Candida glabrata* from respiratory specimen, (e) *Trichosporon asahii* from urogenital specimen, and (f) *Aspergillus fumigatus* from respiratory specimen; scale bar: 10 μ m.