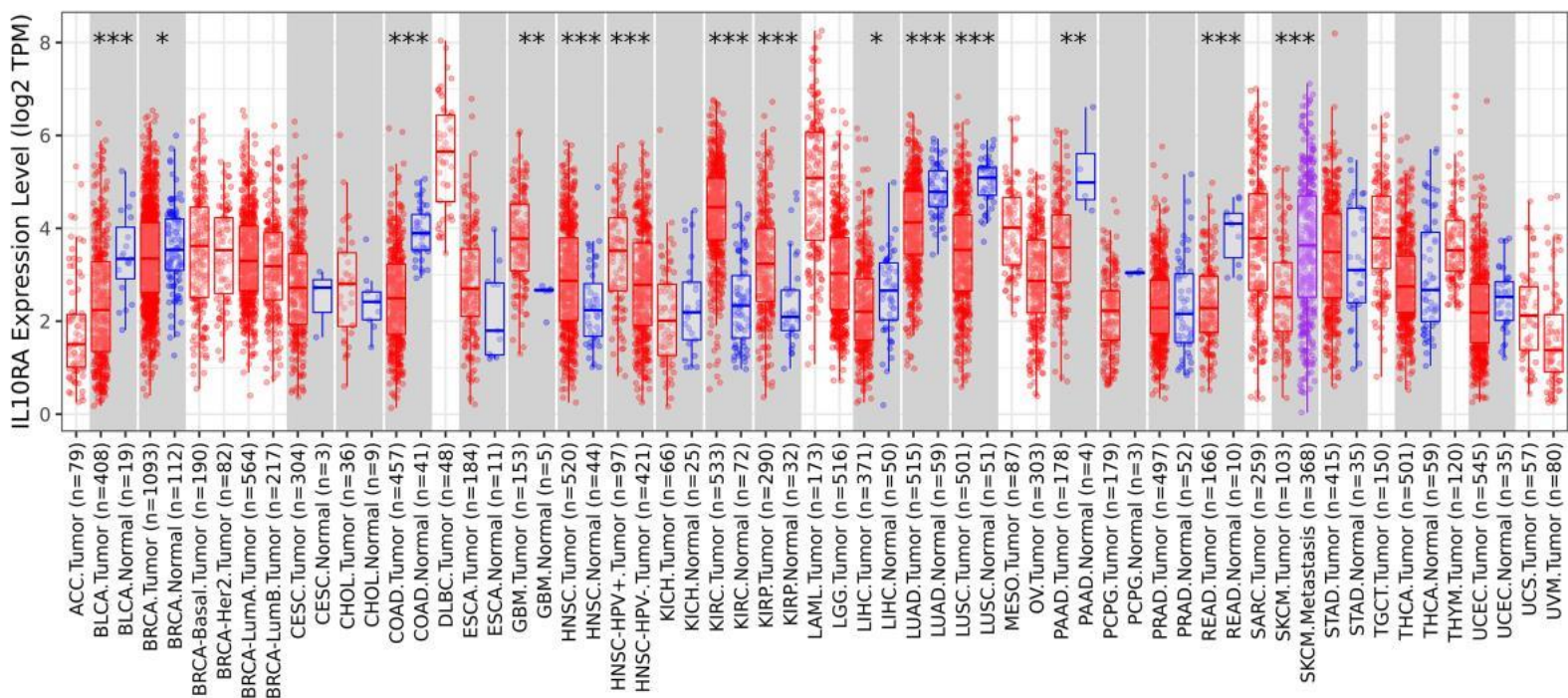
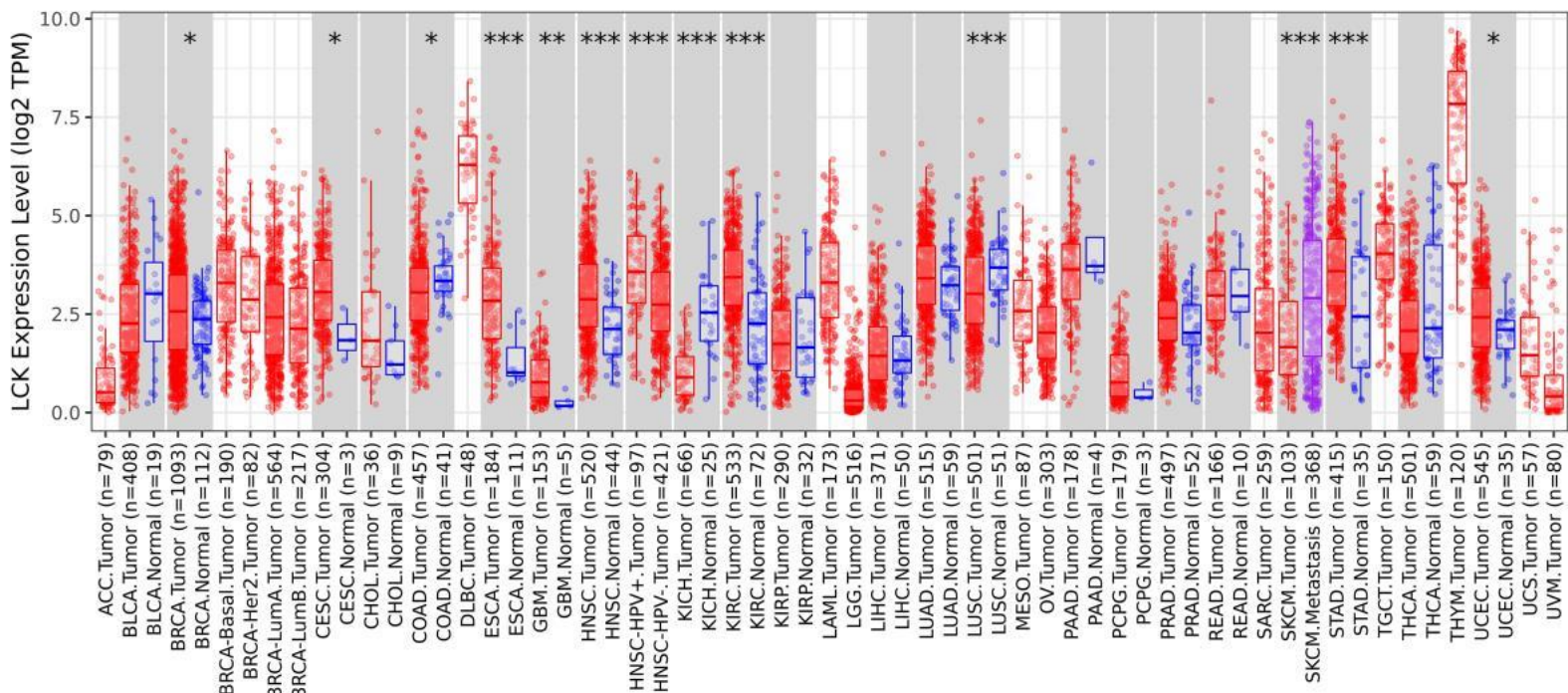


Supplementary Figure 1 | The workflow of the study.



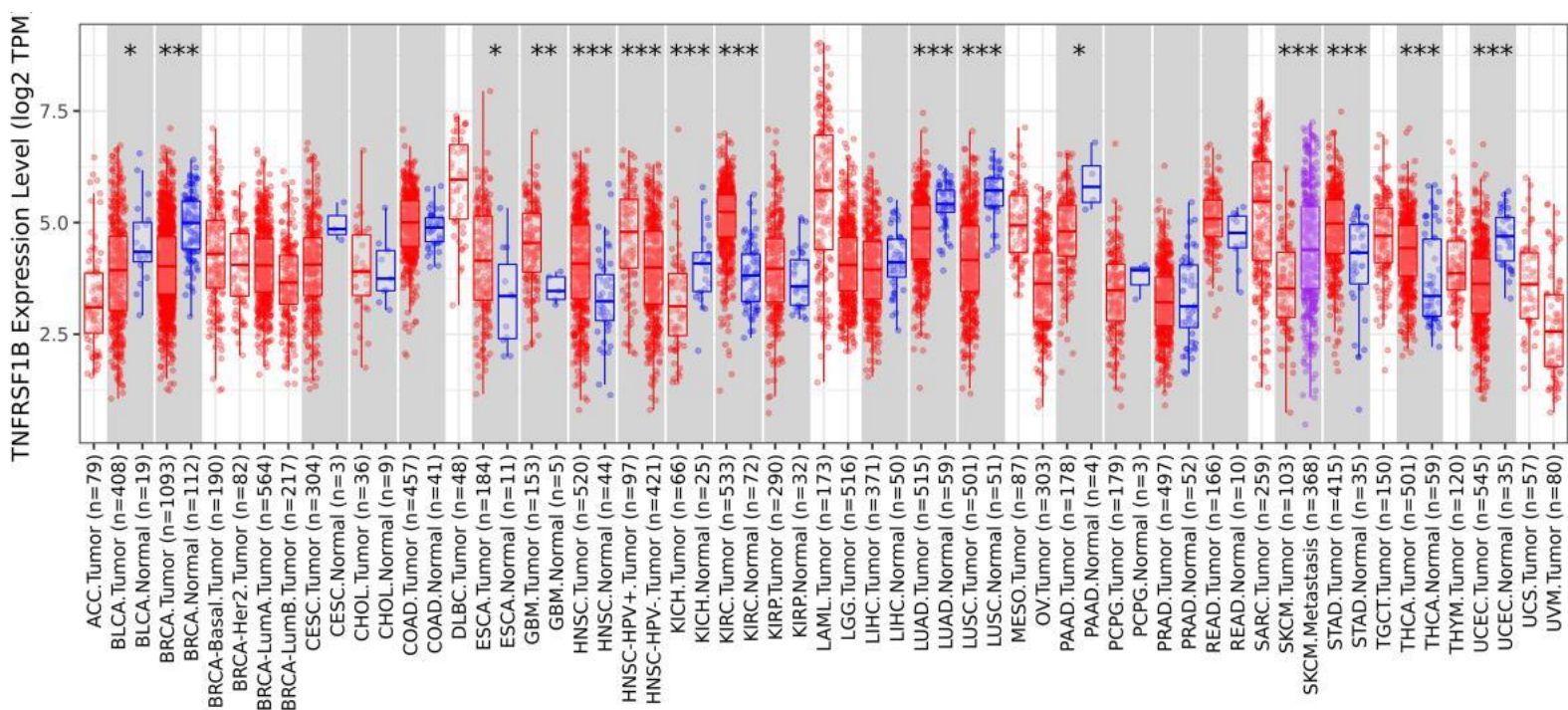
Supplementary Figure 2 | Expression of IL10RA in pan-cancer

Expression level of IL10RA in different cancers or specific cancer subtypes was analyzed through TIMER2. * $P < 0.05$; ** $P < 0.01$; *** $P < 0.001$.



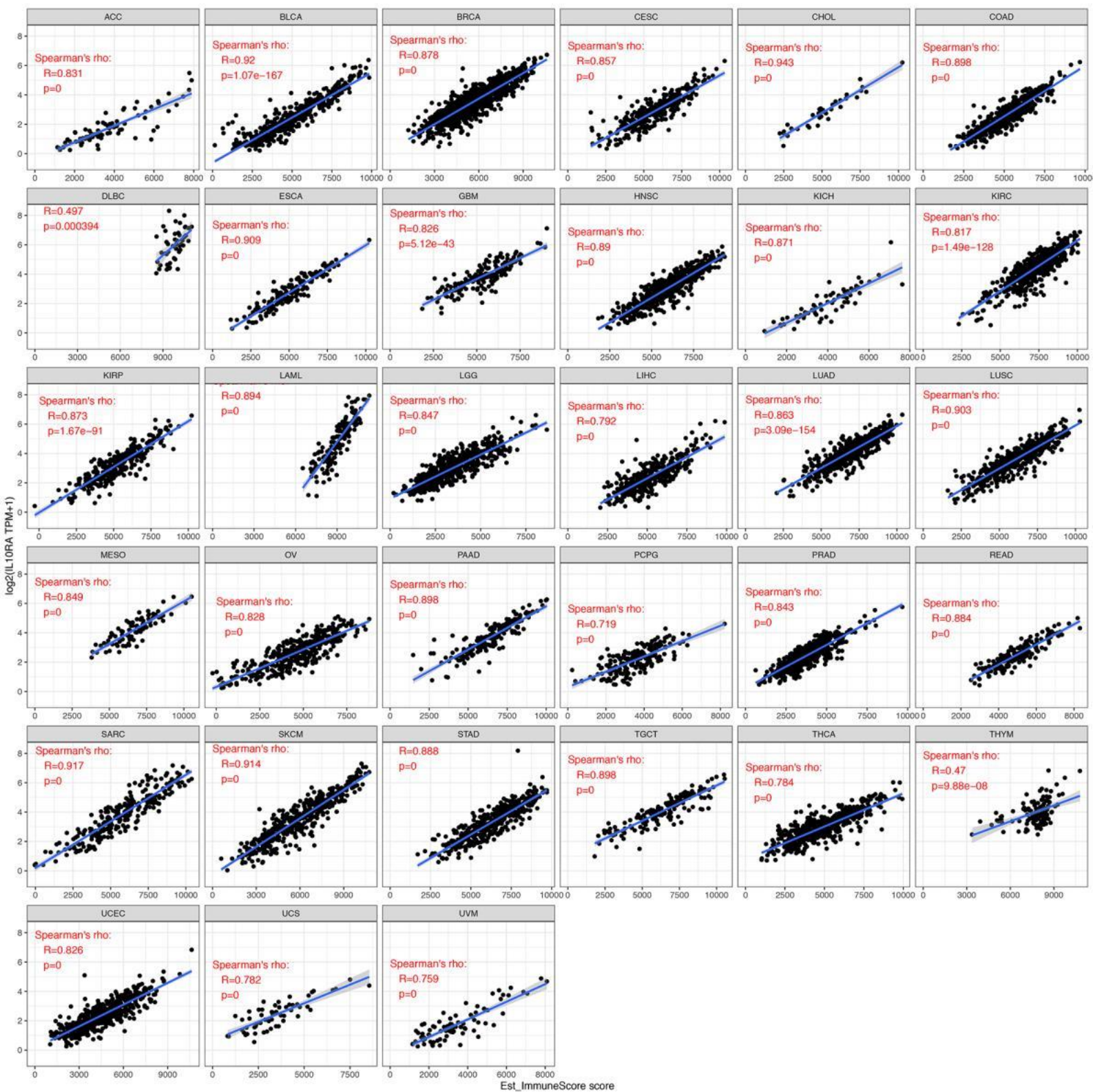
Supplementary Figure 3 | Expression of LCK in pan-cancer

Expression level of LCK in different cancers or specific cancer subtypes was analyzed through TIMER2. * P<0.05; ** P<0.01; *** P<0.001.



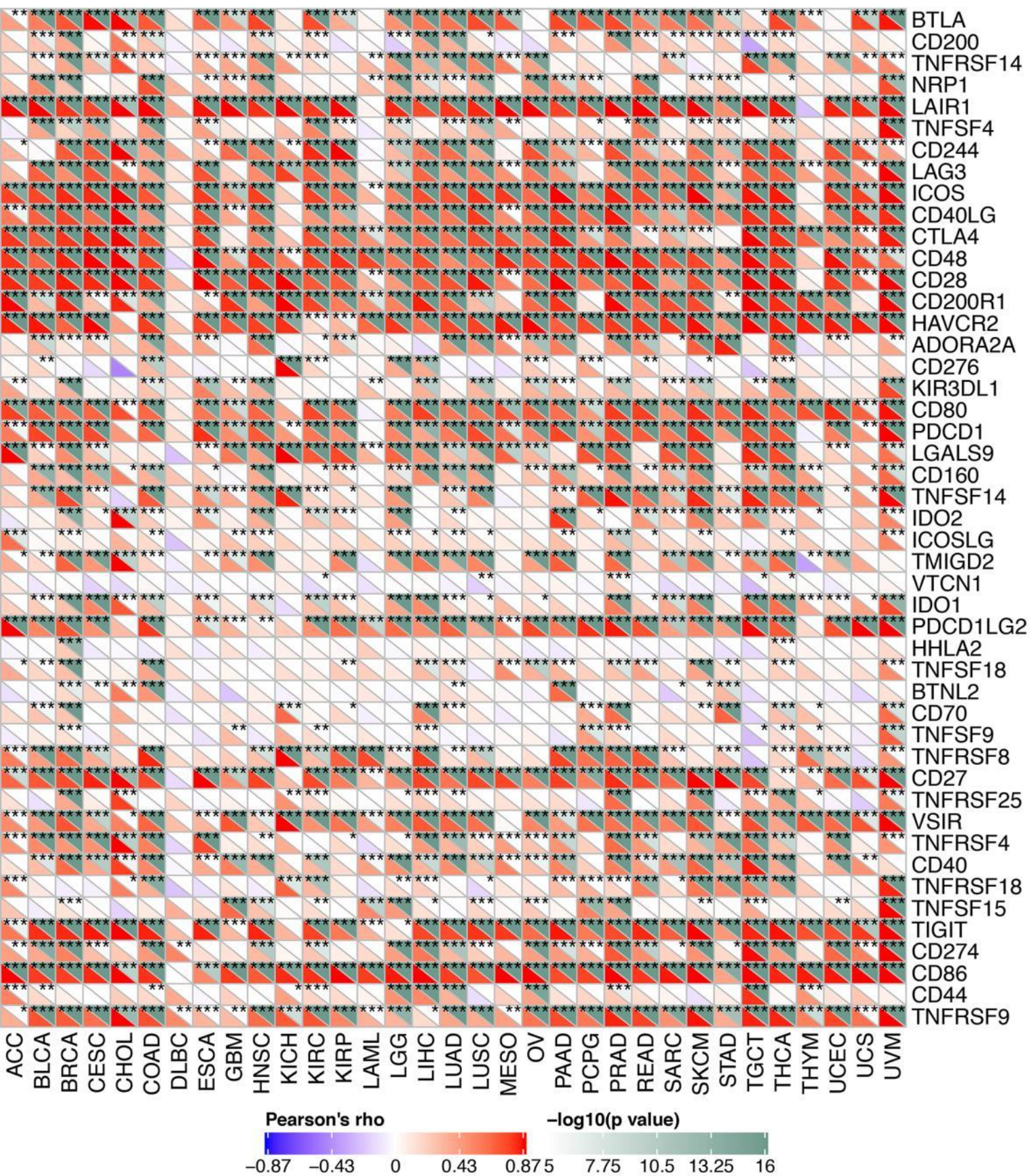
Supplementary Figure 4 | Expression of TNFRSF1B in pan-cancer

Expression level of TNFRSF1B in different cancers or specific cancer subtypes was analyzed through TIMER2. * P<0.05; ** P<0.01; *** P<0.001.

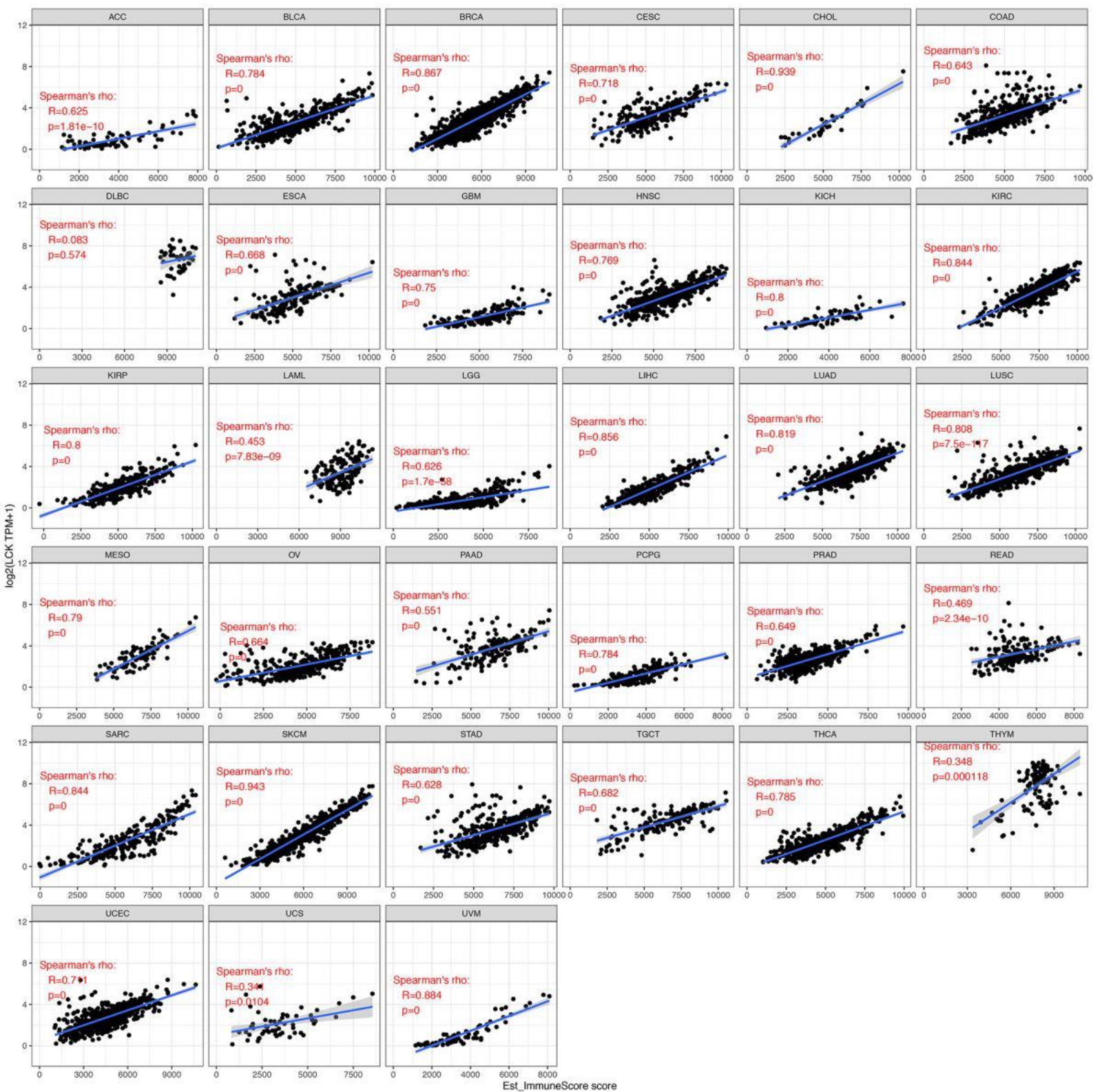


Supplementary Figure 5 | Correlation analysis between IL10RA expression and tumor immune infiltration in Pan-cancer

Correlation analysis between IL10RA expression in Pan-cancer and estimate immune score. * $P < 0.05$; ** $P < 0.01$; *** $P < 0.001$.

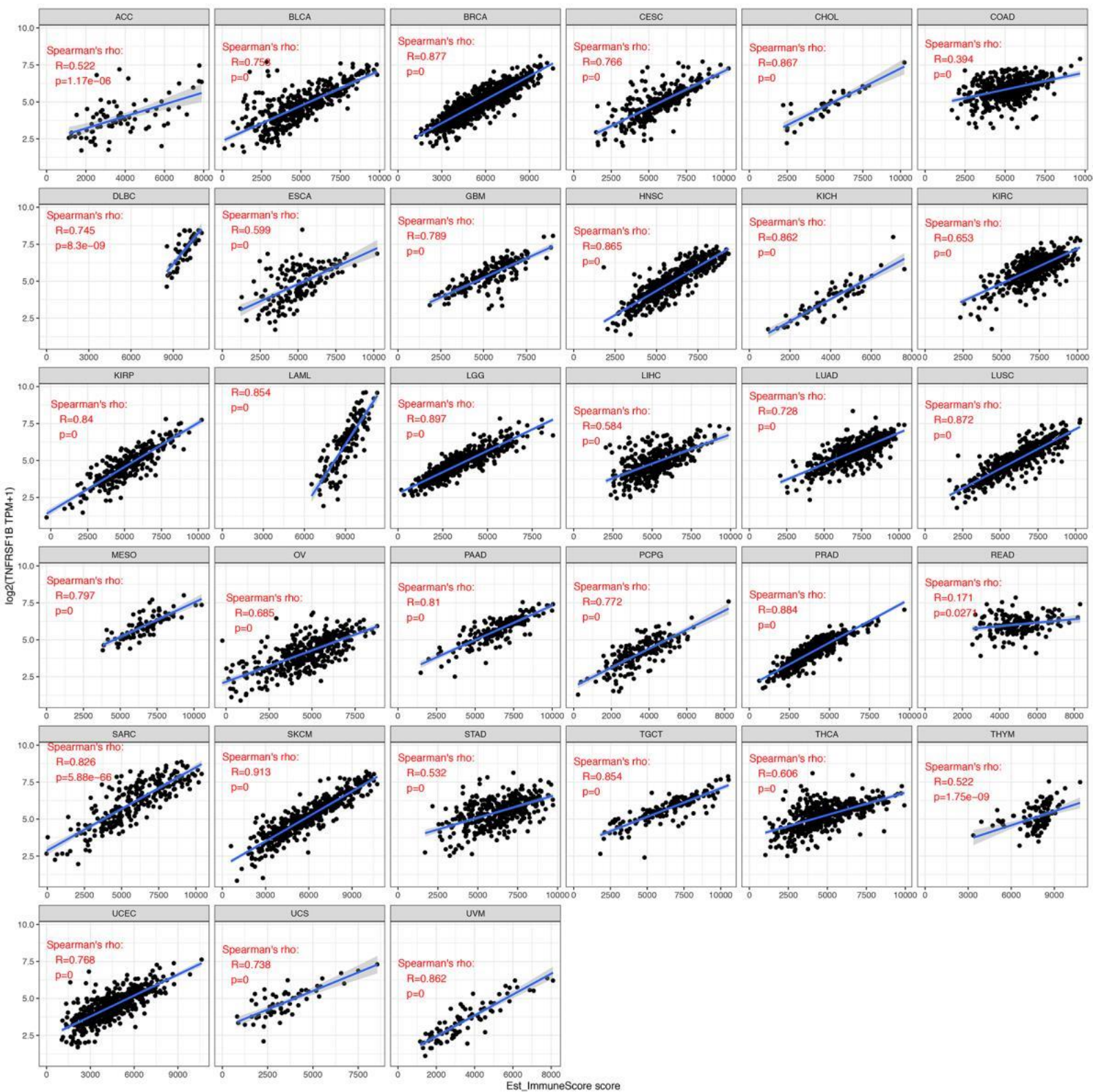


Supplementary Figure 6 | Correlation analysis between IL10RA expression and immune checkpoint gene expression in Pan-cancer
 Correlation analysis between IL10RA expression and immune checkpoint gene expression in Pan-cancer . * P<0.05; ** P<0.01; *** P<0.001.



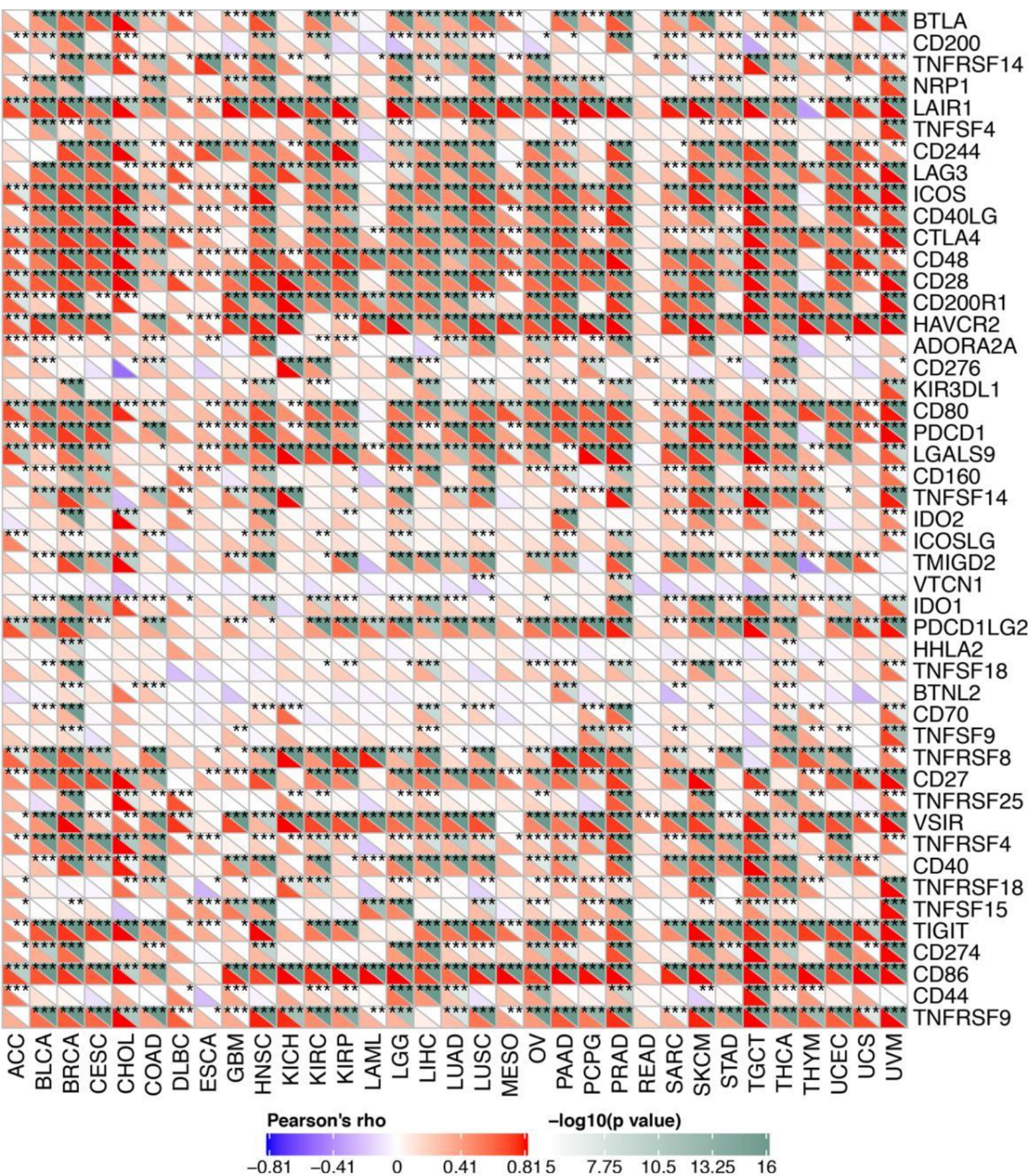
Supplementary Figure 7 | Correlation analysis between LCK expression and tumor immune infiltration in Pan-cancer

Correlation analysis between LCK expression in Pan-cancer and estimate immune score. * $P < 0.05$; ** $P < 0.01$; *** $P < 0.001$.



Supplementary Figure 9 | Correlation analysis between TNFRSF1B expression and tumor immune infiltration in Pan-cancer

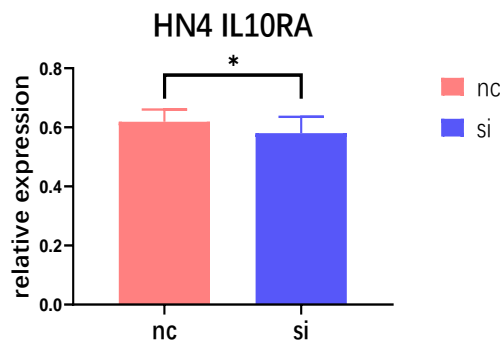
Correlation analysis between TNFRSF1B expression in Pan-cancer and estimate immune score. * $P < 0.05$; ** $P < 0.01$; *** $P < 0.001$.



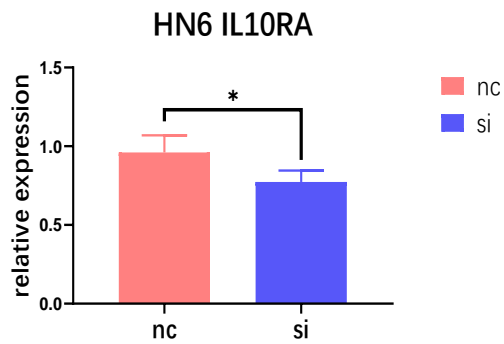
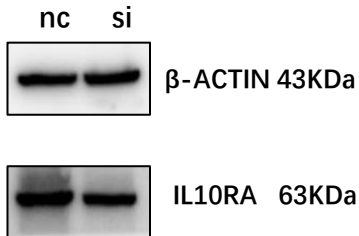
Supplementary Figure 10 | Correlation analysis between TNFRSF1B expression and immune checkpoint gene expression in Pan-cancer

Correlation analysis between TNFRSF1B expression and immune checkpoint gene expression in Pan-cancer. * P<0.05; ** P<0.01; *** P<0.001.

HN4 IL10RA

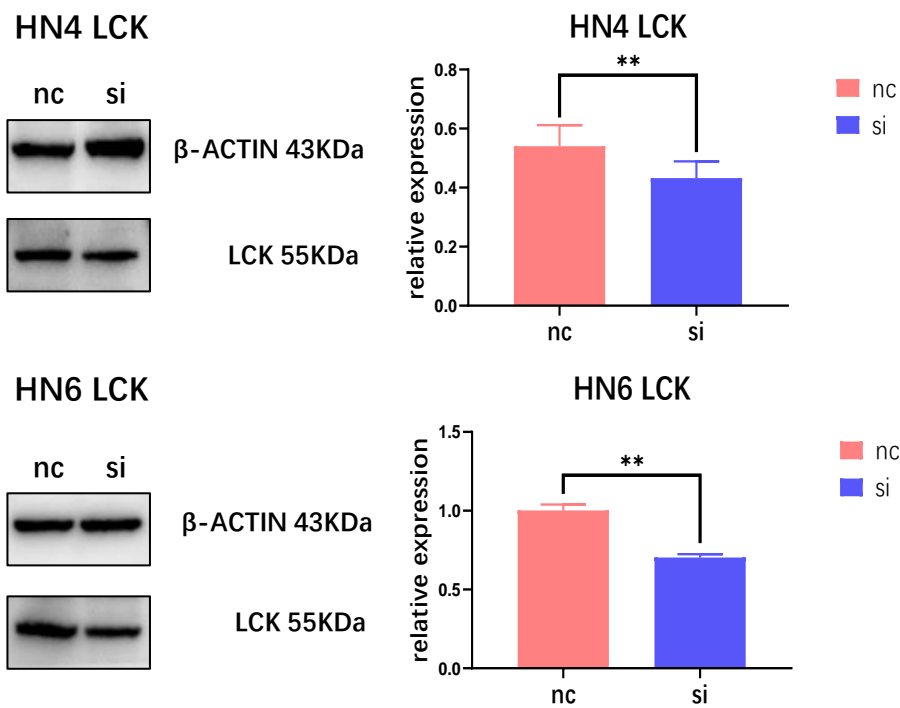


HN6 IL10RA



Supplementary Figure 11 | The protein expression of IL10RA on HN4 cells and HN6 cells transfected with siNC and siRNA.

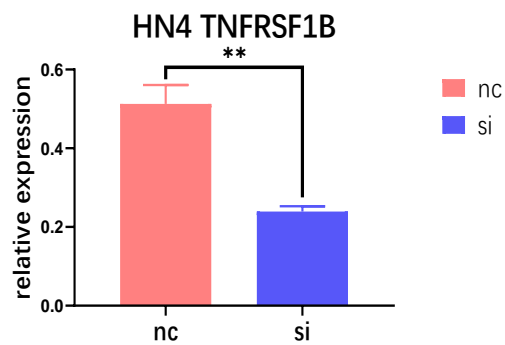
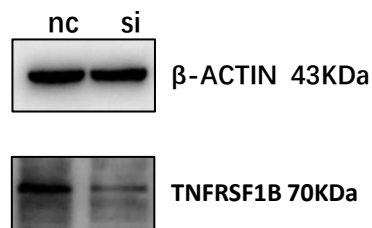
The protein expression of IL10RA on HN4 cells (nc group, si group) and HN6 cells (nc group, si group), which were confirmed by Western blot.* P<0.05.



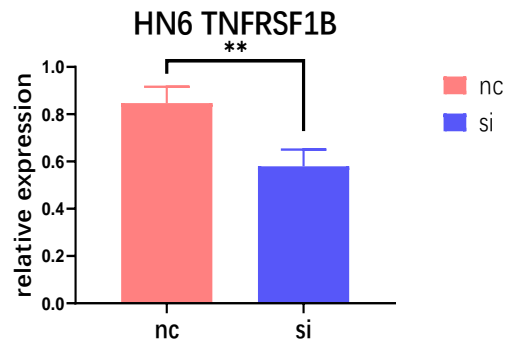
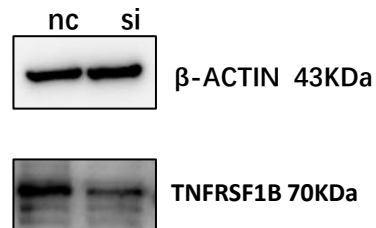
Supplementary Figure 12 | The protein expression of LCK on HN4 cells and HN6 cells transfected with siNC and siRNA.

The protein expression of LCK on HN4 cells (nc group, si group) and HN6 cells (nc group, si group), which were confirmed by Western blot. ** P<0.01.

HN4 TNFRSF1B



HN6 TNFRSF1B



Supplementary Figure 13 | The protein expression of TNFRSF1B on HN4 cells and HN6 cells transfected with siNC and siRNA.

The protein expression of TNFRSF1B on HN4 cells (nc group, si group) and HN6 cells (nc group, si group), which were confirmed by Western blot. ** P<0.01.