

## **Supplementary Information**

# **TLR3 Expression is a Potential Prognosis Biomarker and Shapes the Immune-Active Tumor Microenvironment in Esophageal Squamous Cell Carcinoma**

Ruibing Su<sup>¶</sup>, Lijun Cai<sup>¶</sup>, Pan Xiong<sup>¶</sup>, Zhiwei Liu<sup>¶</sup>, Shaobin Chen, Xi Liu, Runhua Lin, Zhijin Lei,  
Dongping Tian, Min Su\*

\* Corresponding author: Min Su

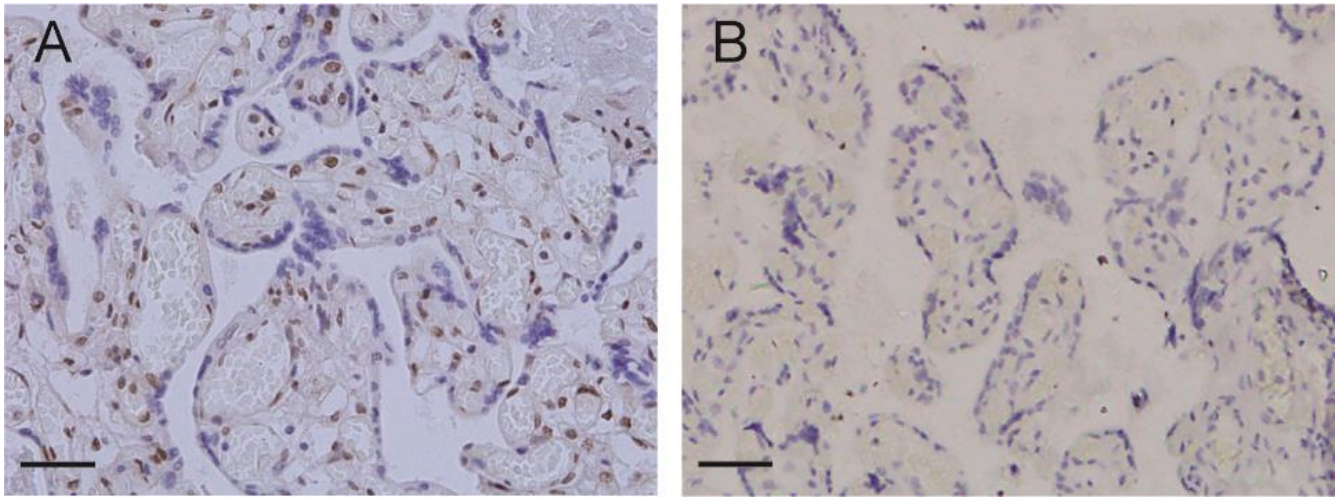
E-mail: minsu@stu.edu.cn

<sup>¶</sup>These authors contributed equally to this work.

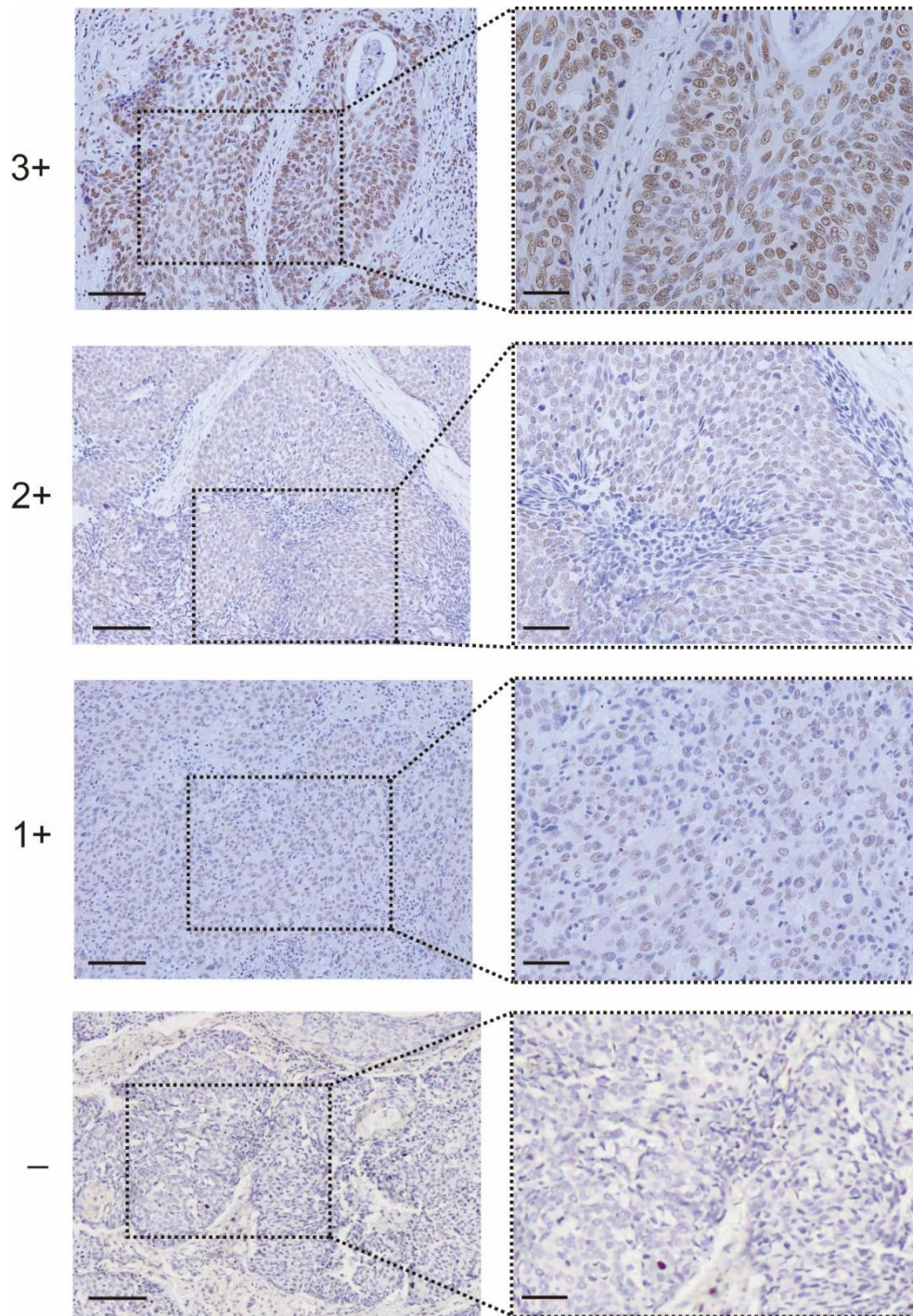
This file includes:

Supplementary Figure 1 to 7

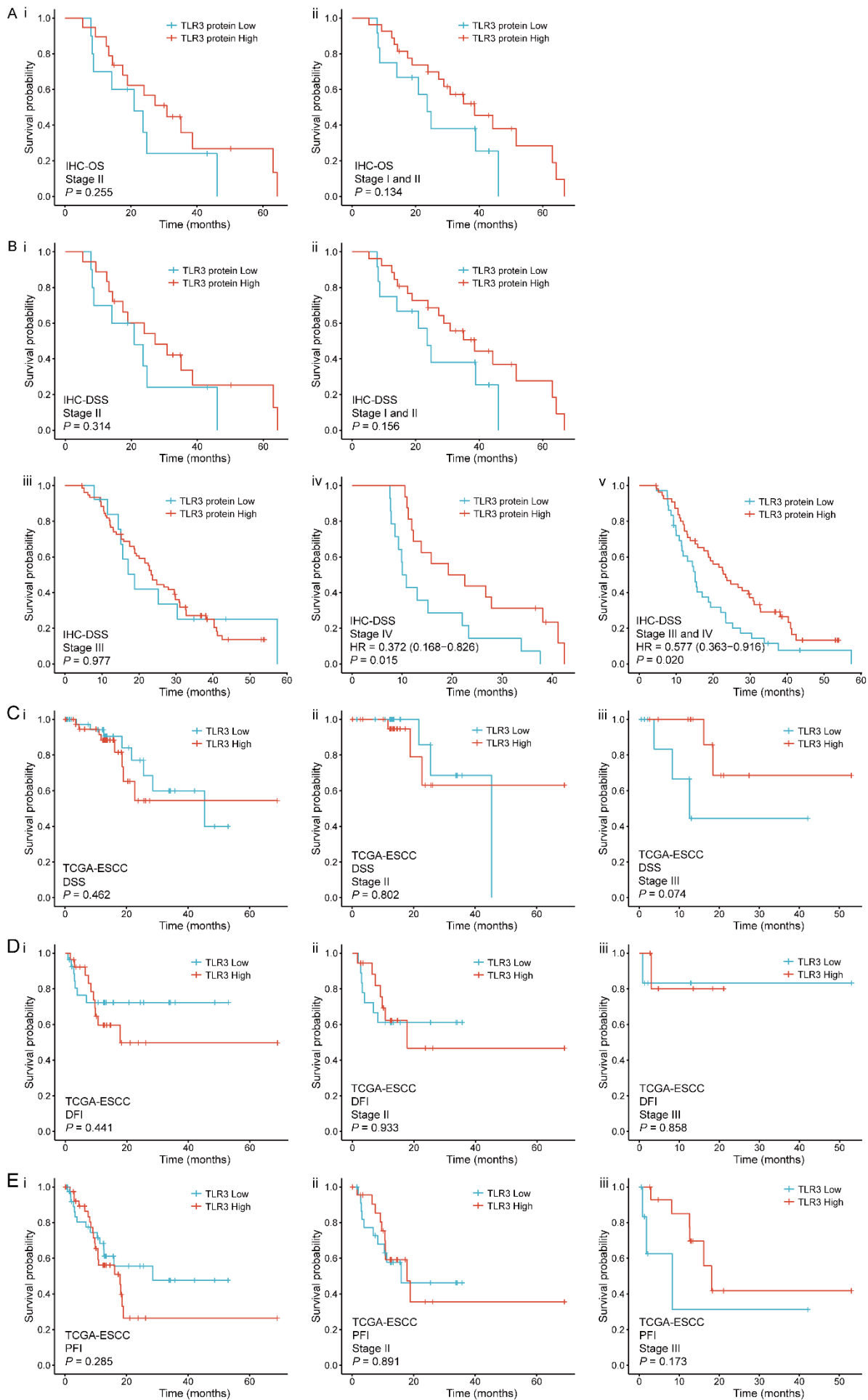
Supplementary Table 1 to 2



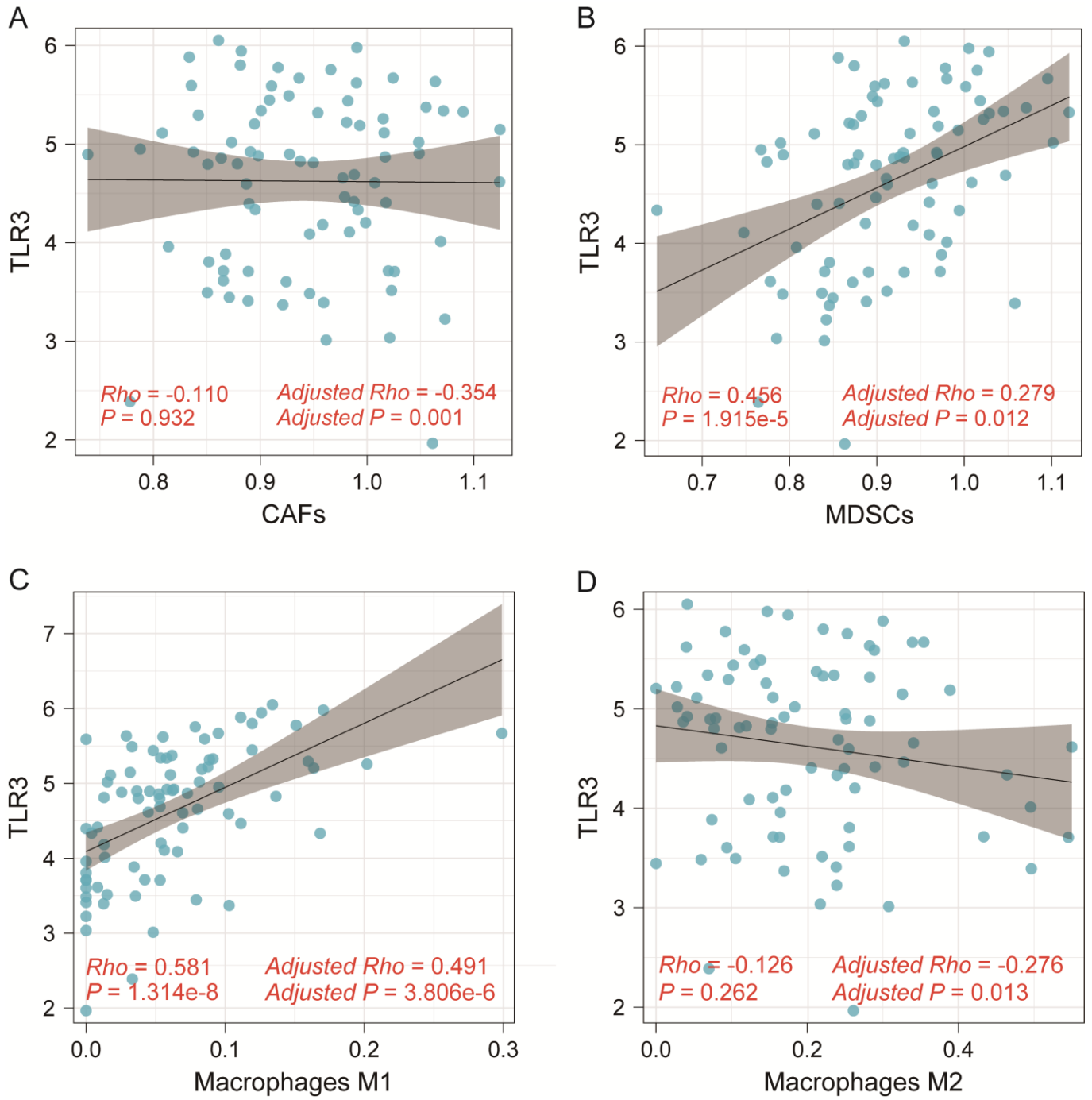
**Figure S1. Representative IHC images of controls of placental tissues. (A) Positive control. (B) Negative control using normal mouse IgG. Scale bars: 40  $\mu$ m.**



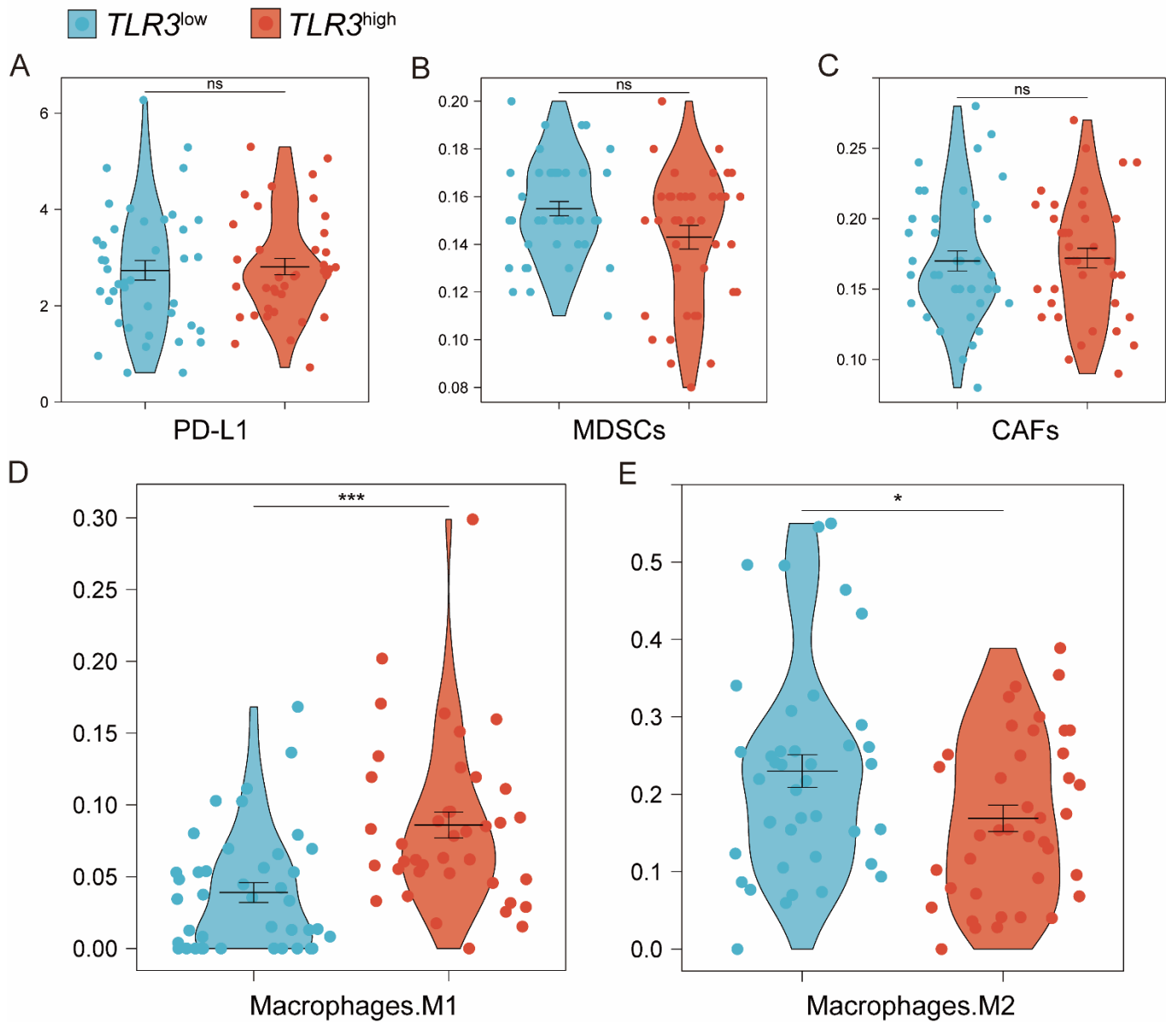
**Figure S2. Representative photomicrographs of TLR3 IHC staining in ESCC tissue show 3+, 2+, 1+, and - scores. Scale bars:100  $\mu\text{m}$  (left side) and 40  $\mu\text{m}$  (right side).**



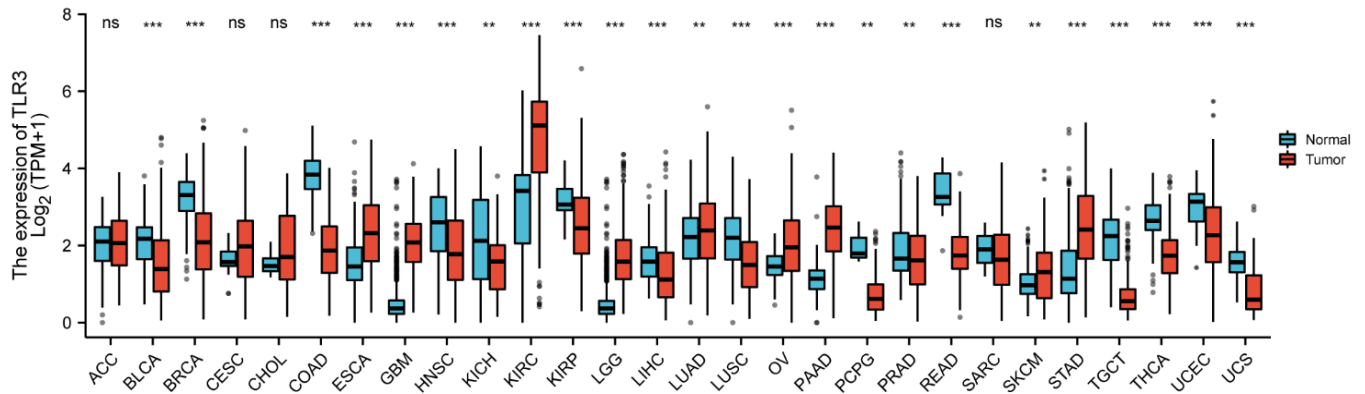
**Figure S3. Survival curves for TLR3 in IHC samples and TCGA.** (A) OS survival curves in TNM stage II (i) and combined stages I and II (ii) for the IHC samples. (B) Survival curves for DSS in TNM stage II (i), combined stages I and II (ii), stage III (iii), stage IV (iv), and combined stages III and IV (v) for the IHC samples. (C) Survival curves for DSS in all data (i), TNM stage II (ii) and stage III (iii) in TCGA-ESCC. (D) Survival curves for DFI in all data (i), TNM stage II (ii) and stage III (iii) in TCGA-ESCC. (E) Survival curves for PFI in all data (i), TNM stage II (ii) and stage III (iii) in TCGA-ESCC.



**Figure S4. Correlation between TLR3 expression in CAFs (A), MDSCs (B), M1-type macrophages (C) and M2-type macrophage (D).**

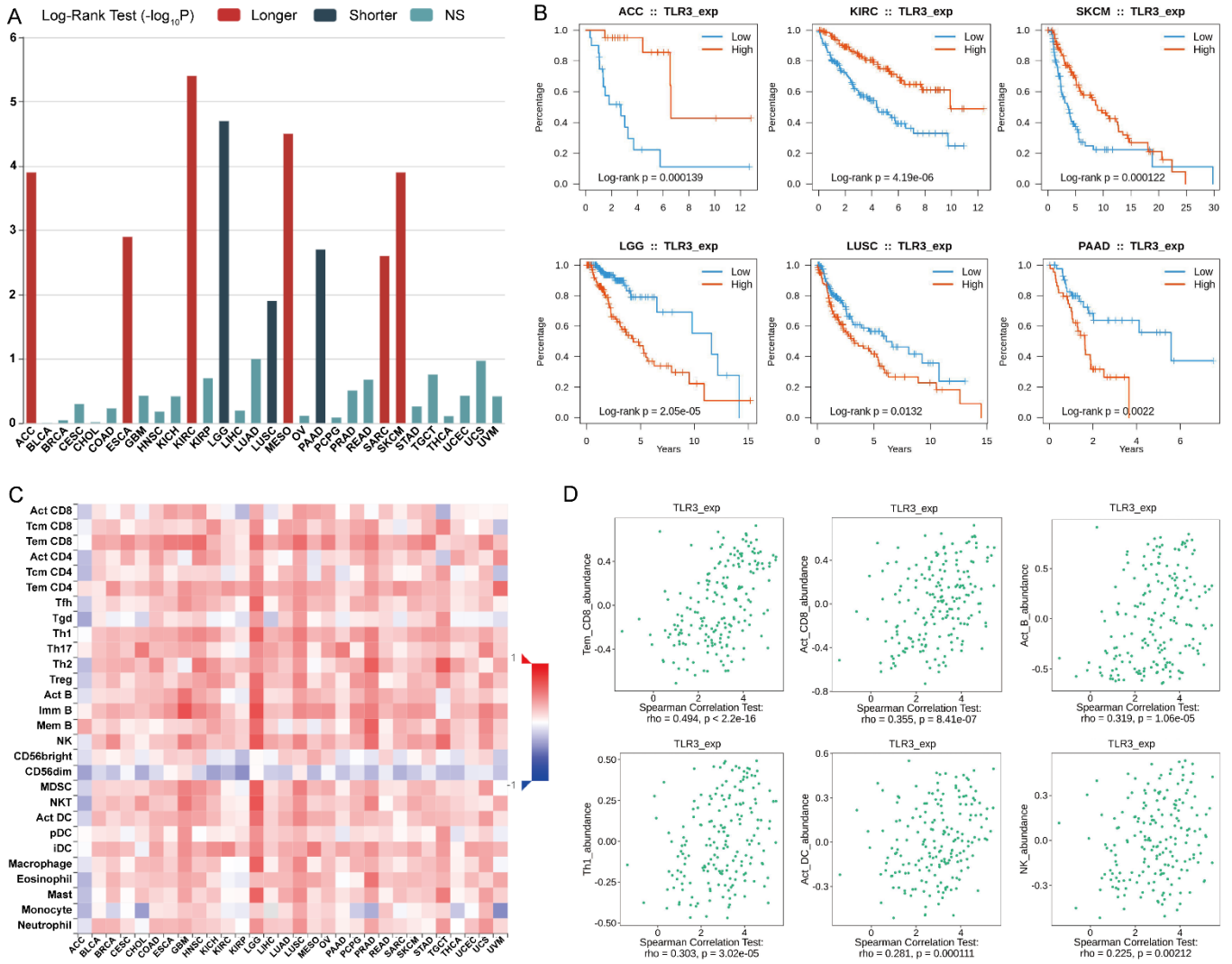


**Figure S5. Violin plot showing difference analysis in PD-L1 (A), CAFs (B), MDSCs (C), M1-type macrophages (D) and M2-type macrophage (E) between  $TLR3^{low}$  and  $TLR3^{high}$  groups. ns, no significance; \* $P < 0.05$ , \*\*\* $P < 0.001$ .**



**Figure S6. Expression pattern of *TLR3* in pan-cancer.** The mRNA expression of *TLR3* changed in 24 of 28 cancer types compared with normal tissues, including 9 types showing upregulation and 15 types showing downregulation. ACC, adrenocortical cancer; BLCA, bladder urothelial carcinoma; BRCA, breast invasive carcinoma; CESC, cervical cancer; CHOL, cholangiocarcinoma; COAD, colon adenocarcinoma; ESCA, esophageal cancer; GBM, glioblastoma multiforme; HNSC, head and neck squamous cell carcinoma; KICH, kidney chromophobe; KIRC, kidney renal clear cell carcinoma; KIRP, kidney renal papillary cell carcinoma; LGG, lower grade glioma; LIHC, liver hepatocellular carcinoma; LUAD, lung adenocarcinoma; LUSC, lung squamous cell carcinoma; OV, ovarian cancer; PAAD, pancreatic cancer; PCPG, pheochromocytoma and paraganglioma; PRAD, prostate adenocarcinoma; READ, rectum adenocarcinoma; SARC, sarcoma; SKCM, skin cutaneous melanoma; STAD, stomach adenocarcinoma; TGCT, testicular germ cell tumor; THCA, thyroid carcinoma; UCEC, uterine corpus endometrial carcinoma; UCS, uterine carcinosarcoma. \*\* $P < 0.01$ , \*\*\* $P < 0.001$ ; ns, no significance.





**Figure S7. Associations between *TLR3* expression, OS, and immune infiltration level in pan-cancers.** (A) Associations between *TLR3* expression and OS across human cancers (longer,  $P < 0.05$ , red; shorter,  $P < 0.05$ , cyan-blue; NS, no significant, cyan). (B) Representative survival curves of *TLR3* expression with different cancers, including ACC (adrenocortical cancer), KIRC (kidney renal clear cell carcinoma), SKCM (skin cutaneous melanoma), LGG (lower grade glioma), LUSC (lung squamous cell carcinoma) and PAAD (pancreatic cancer). (C) Relations between the expression of *TLR3* and 28 types of TILs across human cancers. (D) *TLR3* was correlated with the abundance of CD8+ T cells, CD4+ T cells, Th1 cells, DCs, and NK cells.

**Table S1. Detailed clinicopathological parameters in the IHC sample cohort.**

Patients	Gender	Age	Location	Gross	size (cm)	Grade	pT	pN	pM	pTNM	Margin	radiotherapy	chemotherapy	OS	DSS	Survival time (months)
1	M	58	Mid	Medullary	6.0	I	T4	N0	M0	-	R0	NA	NA	1	1	11.60
2	M	54	Mid	Medullary	5.0	I	T2	N0	M0	IB	R0	NA	NA	1	1	38.93
3	M	65	Mid	Medullary	5.5	I	T3	N0	M0	IIA	R0	NA	NA	1	1	7.83
4	F	69	Mid	Medullary	5.0	I	T4	N0	M0	-	R0	NA	NA	1	1	8.73
5	M	71	Mid	Ulcerative	7.0	I	T3	N0	M0	IIA	R0	NA	NA	1	1	38.57
6	M	69	Mid	Ulcerative	3.0	I	T2	N0	M0	IB	R0	NA	NA	1	1	66.83
7	M	67	Mid	Ulcerative	3.5	I	T2	N0	M0	IB	R0	NA	NA	1	1	51.67
8	F	56	Proximal	Fungating	2.5	I	T1	N0	M0	IA	R0	0	0	0	0	43.00
9	M	56	Proximal	Ulcerative	3.0	I	T3	N0	M0	IIA	R0	1	0	1	1	46.03
10	M	70	Mid	Ulcerative	3.5	I	T3	N0	M0	IIA	R0	0	0	1	1	12.53
11	F	66	Mid	Medullary	1.5	I	T3	N0	M0	IIA	R0	0	0	1	1	18.90
12	M	64	Distal	Medullary	4.0	I	T3	N0	M0	IIA	R0	0	0	0	0	34.83
13	M	71	Mid	Ulcerative	9.0	I	T3	N0	M0	IIA	R0	0	0	1	1	5.33
14	F	74	Distal	Ulcerative	5.0	I	T3	N1	M0	IIIB	R0	0	0	1	0	29.70
15	M	63	Mid	Medullary	4.5	I	T3	N1	M0	IIIB	R0	1	1	1	1	25.23
16	F	68	Mid	Ulcerative	3.0	I	T3	N1	M0	IIIB	R0	0	0	1	1	12.17
17	M	56	Mid	Ulcerative	4.0	I	T3	N1	M0	IIIB	R0	0	0	0	0	43.47
18	M	70	Mid	Ulcerative	3.5	I	T4	N0	M0	-	R0	0	0	0	0	38.40
19	M	76	Mid	Fungating	5.5	I	T2	N0	M0	IB	R0	1	1	1	1	28.87
20	M	52	Mid	Medullary	3.0	I	T3	N1	M0	IIIB	R0	0	0	1	1	4.60
21	F	67	Mid	Medullary	3.0	I	T2	N1	M0	IIIA	R0	NA	NA	1	1	22.73
22	M	71	Distal	Medullary	5.0	I	T3	N2	M0	IIIB	R0	NA	NA	1	0	15.13
23	M	49	Distal	Medullary	4.0	I	T3	N2	M0	IIIB	R0	0	0	1	1	11.43
24	M	63	Mid	Medullary	5.0	II	T4	N0	M0	-	R0	NA	NA	1	1	11.83
25	F	61	Mid	Medullary	4.3	I	T3	N2	M0	IIIB	R0	1	1	1	1	17.03
26	M	61	Mid	Fungating	4.0	I	T2	N1	M0	IIIA	R0	0	0	0	0	9.33
27	M	47	Mid	Medullary	5.0	II	T4	N0	M0	-	R0	NA	NA	1	1	13.07
28	M	56	Mid	Medullary	5.0	I	T3	N3	M0	IVA	R0	NA	NA	1	1	27.87
29	M	46	Mid	Ulcerative	5.0	II	T3	N0	M0	IIB	R0	NA	NA	1	1	64.30
30	M	50	Mid	Medullary	5.0	II	T3	N0	M0	IIB	R0	NA	NA	1	1	30.83

Patients	Gender	Age	Location	Gross	size (cm)	Grade	pT	pN	pM	pTNM	Margin	radiotherapy	chemotherapy	OS	DSS	Survival time (months)
31	F	60	Mid	Ulcerative	4.0	II	T3	N0	M0	IIB	R0	NA	NA	1	1	63.07
32	M	65	Mid	Ulcerative	4.2	I	T2	N3	M0	IVA	R1	0	0	1	1	23.33
33	M	54	Mid	Ulcerative	5.0	II	T3	N0	M0	IIB	R0	NA	NA	1	1	14.30
34	M	66	Mid	Fungating	2.5	II	T2	N0	M0	IIA	R0	NA	NA	1	1	17.47
35	M	64	Mid	Medullary	3.0	II	T2	N0	M0	IIA	R0	NA	NA	1	1	24.80
36	M	51	Proximal	Medullary	4.0	II	T3	N0	M0	IIB	R0	NA	NA	1	1	8.20
37	F	60	Distal	Ulcerative	8.0	II	T4	N0	M0	-	R0	NA	NA	1	1	20.00
38	M	62	Mid	Ulcerative	7.0	II	T4	N0	M0	-	R0	1	0	1	1	6.60
39	F	60	Proximal	Ulcerative	4.5	II	T4	N0	M0	-	R0	0	0	1	1	19.33
40	M	53	Mid	Medullary	3.5	II	T3	N0	M0	IIB	R0	0	0	1	1	20.90
41	M	52	Mid	Ulcerative	5.0	II	T4	N0	M0	-	R0	0	0	1	1	4.67
42	M	70	Mid	Ulcerative	2.5	II	T3	N0	M0	IIB	R0	0	0	1	1	35.07
43	M	64	Mid	Ulcerative	4.0	II	T3	N0	M0	IIB	R0	0	1	0	0	50.20
44	M	65	Mid	Ulcerative	3.0	II	T3	N0	M0	IIB	R0	0	0	0	0	32.60
45	M	63	Distal	Ulcerative	3.5	II	T3	N0	M0	IIB	R0	0	0	0	0	14.83
46	M	64	Mid	Ulcerative	4.0	II	T4	N0	M0	-	R0	0	0	1	1	6.20
47	F	55	Mid	Ulcerative	4.0	II	T4	N0	M0	-	R0	1	0	0	0	53.60
48	M	65	Proximal	Ulcerative	4.0	II	T4b	N0	M0	IVA	R1	1	0	1	1	7.80
49	M	60	Mid	Ulcerative	3.5	II	T3	N0	M0	IIB	R0	0	0	0	0	18.87
50	F	70	Mid	Fungating	4.5	II	T4a	N0	M0	IIIB	R0	0	0	0	0	44.13
51	M	52	Mid	Constrictive	4.0	I	T4	N1	M0	-	R0	1	0	1	1	27.40
52	M	61	Proximal	Medullary	5.0	II	T4	N1	M0	-	R0	NA	NA	1	1	18.63
53	F	55	Mid	Medullary	4.0	II	T3	N1	M0	IIIB	R0	NA	NA	1	1	15.10
54	F	63	Distal	Medullary	4.0	II	T4	N1	M0	-	R0	NA	NA	1	1	12.97
55	M	50	Mid	Medullary	5.0	II	T4	N1	M0	-	R0	NA	NA	1	1	30.83
56	M	49	Mid	Ulcerative	6.0	II	T4	N1	M0	-	R0	1	0	1	1	15.43
57	M	66	Proximal	Medullary	5.0	II	T3	N1	M0	IIIB	R0	NA	NA	1	1	15.17
58	M	64	Mid	Ulcerative	5.0	II	T4a	N1	M0	IIIB	R0	1	1	1	1	9.70
59	M	60	Mid	Medullary	3.5	II	T2	N0	M0	IIA	R0	0	0	1	1	23.60
60	M	48	Mid	Medullary	5.0	II	T3	N1	M0	IIIB	R0	NA	NA	1	1	40.97
61	M	62	Proximal	Ulcerative	5.3	II	T4	N1	M0		R0	0	0	1	1	9.23

Patients	Gender	Age	Location	Gross	size (cm)	Grade	pT	pN	pM	pTNM	Margin	radiotherapy	chemotherapy	OS	DSS	Survival time (months)
62	M	59	Mid	Medullary	6.0	II	T3	N1	M0	IIIB	R0	NA	NA	1	1	23.67
63	M	74	Mid	Ulcerative	4.5	II	T4a	N1	M0	IIIB	R1	0	1	0	0	4.53
64	M	75	Mid	Constrictive	4.0	II	T3	N1	M0	IIIB	R0	NA	NA	1	1	18.80
65	M	62	Mid	Medullary	5.0	II	T3	N1	M0	IIIB	R0	NA	NA	1	1	30.37
66	F	66	Mid	Ulcerative	5.5	II	T4a	N1	M0	IIIB	R0	NA	NA	1	NA	13.00
67	M	59	Mid	Medullary	5.0	II	T3	N1	M0	IIIB	R0	NA	NA	1	1	32.77
68	M	72	Proximal	Medullary	3.5	II	T2	N0	M0	IIA	R0	NA	NA	0	NA	30.00
69	M	63	Distal	Ulcerative	7.0	II	T2	N0	M0	IIA	R0	0	0	0	0	43.07
70	M	63	Proximal	Medullary	5.0	II	T2	N0	M0	IIA	R0	1	1	1	1	13.23
71	M	49	Proximal	Ulcerative	3.0	III	T4	N1	M0	-	R0	1	1	1	1	23.43
72	M	51	Mid	Medullary	7.0	I	T4	N2	M0	IVA	R0	NA	NA	1	1	7.53
73	M	55	Mid	Medullary	5.0	II	T3	N1	M0	IIIB	R0	NA	NA	1	1	23.33
74	M	42	Mid	Fungating	4.5	II	T3	N1	M0	IIIB	R0	0	1	0	0	53.07
75	M	58	Proximal	Medullary	3.0	II	T3	N1	M0	IIIB	R0	1	0	0	0	34.83
76	M	53	Mid	Ulcerative	7.0	I	T4	N2	M0	IVA	R0	NA	NA	1	1	9.27
77	M	56	Distal	Medullary	6.0	I	T4	N2	M0	IVA	R0	NA	NA	1	1	26.73
78	M	68	Mid	Ulcerative	5.0	II	T3	N1	M0	IIIB	R0	0	0	0	0	32.57
79	M	37	Mid	Medullary	5.0	I	T4	N2	M0	IVA	R0	1	1	1	1	12.27
80	M	49	Mid	Medullary	5.0	II	T2	N1	M0	IIIA	R0	NA	NA	1	1	10.47
81	M	62	Distal	Ulcerative	7.5	I	T4	N2	M0	IVA	R0	1	0	1	1	37.60
82	M	64	Mid	Ulcerative	7.5	I	T4	N2	M0	IVA	R0	0	1	1	1	19.27
83	M	55	Mid	Ulcerative	3.5	I	T4	N2	M0	IVA	R0	0	1	0	0	38.73
84	M	58	Mid	Ulcerative	3.8	II	T2	N1	M0	IIIA	R0	NA	NA	1	NA	19.00
85	M	51	Distal	Ulcerative	5.0	I	T4a	N2	M0	IVA	R0	0	1	0	0	36.67
86	M	51	Mid	Ulcerative	2.0	II	T2	N1	M0	IIIA	R0	0	1	0	0	53.90
87	M	49	Mid	Ulcerative	4.0	II	T3	N1	M0	IIIB	R0	1	1	1	1	9.63
88	M	56	Mid	Ulcerative	4.5	II	T2	N1	M0	IIIA	R0	NA	NA	1	NA	18.00
89	M	45	Mid	Medullary	5.0	II	T4	N2	M0	IVA	R0	NA	NA	1	1	10.93
90	M	51	Distal	Ulcerative	3.5	II	T3	N1	NA	-	R0	1	0	1	1	14.70
91	M	61	Mid	Ulcerative	4.5	II	T4	N2	M0	IVA	R0	0	1	1	1	15.83
92	M	52	Mid	Medullary	7.0	II	T3	N1	NA	-	R0	NA	NA	1	NA	19.00

Patients	Gender	Age	Location	Gross	size (cm)	Grade	pT	pN	pM	pTNM	Margin	radiotherapy	chemotherapy	OS	DSS	Survival time (months)
93	F	56	Mid	Medullary	1.2	II	T3	N1	M0	IIIB	R0	0	1	0	0	38.03
94	M	52	Mid	Ulcerative	8.0	II	T3	N2	M0	IIIB	R0	NA	NA	1	1	18.77
95	F	54	Proximal	Medullary	2.5	II	T2	N1	M0	IIIA	R0	1	0	1	1	29.53
96	M	40	Mid	Medullary	6.0	II	T3	N2	M0	IIIB	R0	NA	NA	1	1	15.63
97	M	71	Mid	Medullary	4.0	II	T3	N2	M0	IIIB	R0	NA	NA	1	1	57.37
98	F	60	Mid	Ulcerative	4.0	II	T4	N2	M0	IVA	R0	1	0	1	1	41.20
99	F	71	Mid	Medullary	4.5	II	T3	N2	NA	-	R0	0	0	1	1	32.63
100	F	75	Mid	Medullary	4.0	II	T3	N2	M0	IIIB	R0	0	0	1	1	5.17
101	F	66	Mid	Medullary	1.5	II	T2	N1	M0	IIIA	R0	0	0	0	0	36.90
102	M	68	Mid	Medullary	5.0	II	T3	N3	M0	IVA	R0	NA	NA	1	1	7.67
103	M	47	Distal	Constrictive	3.0	III	T4	N2	M0	IVA	R0	0	1	1	1	11.23
104	M	59	Mid	Medullary	6.0	II	T3	N3	M0	IVA	R0	NA	NA	1	1	11.93
105	M	51	Mid	Medullary	7.0	II	T3	N3	M0	IVA	R0	NA	NA	1	1	42.43
106	M	57	Distal	Ulcerative	3.5	II	T3	N3	M0	IVA	R1	0	0	1	1	13.83
107	M	64	Distal	Ulcerative	4.2	II	T3	N3	M0	IVA	R0	1	1	1	1	13.03
108	M	44	Mid	Medullary	6.0	I	T4	N3	M0	IVA	R0	1	1	1	1	33.80
109	M	53	Mid	Ulcerative	5.0	II	T2	N2	M0	IIIB	R0	NA	NA	1	1	31.03
110	M	60	Mid	Medullary	4.0	I	T1	N0	M0	IA	R0	0	0	0	0	23.90
111	M	62	Mid	Ulcerative	6.0	II	T3	N3	M0	IVA	R0	1	1	1	1	9.90
112	F	55	Mid	Medullary	5.0	I	T1	N0	M0	IA	R0	0	0	0	0	38.67
113	F	63	Mid	Medullary	3.5	II	T3	N3	M0	IVA	R0	1	1	1	1	22.07
114	M	55	Mid	Ulcerative	2.0	III	T3	N0	M0	IIB	R0	NA	NA	1	1	27.27
115	M	51	Mid	Medullary	5.0	II	T2	N2	M0	IIIB	R0	NA	NA	1	1	17.47
116	M	63	Proximal	Medullary	3.0	III	T3	N0	M0	IIB	R0	NA	NA	1	1	23.90
117	M	42	Distal	Medullary	8.0	II	T4	N3	M0	IVA	R0	NA	NA	1	1	10.53
118	M	46	Proximal	Medullary	4.0	II	T2	N2	M0	IIIB	R0	1	1	1	1	7.90
119	M	55	Mid	Fungating	2.0	II	T1	N0	M0	IB	R0	NA	NA	1	1	44.33
120	M	65	Mid	Ulcerative	10.0	II	T4	N3	M0	IVA	R0	NA	NA	1	1	10.80
121	M	60	Proximal	Medullary	2.0	II	T1	N0	M0	IB	R1	0	0	0	0	38.43
122	M	56	Mid	Ulcerative	6.5	II	T4	N3	M0	IVA	R0	1	1	1	1	8.57
123	F	58	Mid	Medullary	2.5	II	T1	N1	M0	IIB	R0	0	0	1	1	9.23

Patients	Gender	Age	Location	Gross	size (cm)	Grade	pT	pN	pM	pTNM	Margin	radiotherapy	chemotherapy	OS	DSS	Survival time (months)
124	M	53	Mid	Ulcerative	4.0	III	T3	N0	M0	IIB	R0	0	0	1	1	14.10
125	F	48	Mid	Medullary	2.5	III	T3	N1	M0	IIIB	R0	NA	NA	1	1	24.77
126	F	50	Mid	Medullary	2.0	II	T1	N0	M0	IB	R0	0	0	0	0	37.43
127	M	64	Mid	Medullary	2.5	II	T1	N2	NA	-	R0	NA	NA	1	NA	12.00
128	M	53	Mid	Ulcerative	4.5	II	T2	N2	M0	IIIB	R0	0	0	1	1	14.37
129	M	65	Mid	Fungating	3.8	II	T2	N3	M0	IVA	R0	0	0	1	1	22.50
130	M	40	Mid	Medullary	3.0	III	T3	N1	M0	IIIB	R0	NA	NA	1	1	21.57
131	M	75	Mid	Medullary	5.0	III	T2	N0	M0	IIA	R0	0	0	1	1	8.63
132	M	64	Distal	Ulcerative	7.5	II	T4	N3	M0	IVA	R0	0	0	1	1	10.03
133	M	55	Mid	Ulcerative	5.5	II	T4	N3	M1	IVB	R1	0	0	1	1	38.13
134	M	58	Distal	Ulcerative	4.3	II	T4a	N3	M0	IVA	R0	NA	NA	1	NA	8.00
135	M	64	Proximal	Ulcerative	4.0	III	T3	N2	M0	IIIB	R0	1	0	1	1	29.80
136	M	66	Mid	Medullary	2.8	III	T2	N1	M0	IIIA	R0	0	0	1	1	40.30
137	F	63	Distal	Ulcerative	5.0	III	T4	N3	M0	IVA	R0	0	0	1	1	15.13

**Table S2. Clinicopathological parameters of ESCC patients in TCGA dataset.**

Characteristics	TCGA-ESCC				TCGA-ESCA			
	Total N (%)	TLR3 <sup>High</sup> N (%)	TLR3 <sup>Low</sup> N (%)	P value	Total N (%)	TLR3 <sup>High</sup> N (%)	TLR3 <sup>Low</sup> N (%)	P value
<b>Gender</b>				0.925				0.760
Female	12 (15.00)	6 (7.50)	6 (7.50)		23 (14.38)	6 (3.75)	17 (10.63)	
Male	68 (85.00)	33 (41.25)	35 (43.75)		137 (85.63)	40 (25.00)	97 (60.63)	
<b>Age (years)</b>				0.855				0.546
< 60	48 (48.18)	23 (28.75)	25 (31.25)		74 (46.25)	23 (14.38)	51 (31.88)	
≥ 60	32 (40.00)	16 (20.00)	16 (20.00)		86 (53.75)	23 (14.38)	63 (39.38)	
<b>Tumor location</b>				0.239				
Upper	6 (7.50)	3 (3.75)	3 (3.75)		6 (3.75)	2 (1.25)	4 (2.50)	0.446
Middle	35 (43.75)	13 (16.25)	22 (27.50)		40 (25.00)	12 (7.50)	28 (17.50)	
Lower	38 (47.50)	22 (27.50)	16 (20.00)		113 (70.63)	31 (19.38)	82 (51.25)	
Unknown	1 (1.25)	1 (1.25)	0 (0.00)		1 (0.63)	1 (0.63)	0 (0.00)	
<b>Tumor grade</b>				0.697				0.252
G1	15 (18.75)	7 (8.75)	8 (10.00)		16 (10.00)	5 (3.13)	11 (6.88)	
G2	38 (47.50)	17 (21.25)	21 (26.25)		66 (41.25)	17 (10.63)	49 (30.63)	
G3	18 (22.50)	9 (11.25)	9 (11.25)		43 (26.88)	17 (10.63)	26 (16.25)	
GX	9 (11.25)	6 (7.50)	3 (3.75)		35 (21.88)	7 (4.38)	28 (17.50)	
<b>pT stage</b>				0.460				0.013
I	8 (10.00)	3 (3.75)	5 (6.25)		27 (16.88)	2 (1.25)	25 (15.63)	
II	27 (33.75)	15 (18.75)	12 (15.00)		37 (23.13)	16 (10.00)	21 (13.13)	
III	40 (50.00)	20 (25.00)	20 (25.00)		76 (47.50)	24 (15.00)	52 (32.50)	
IV	5 (6.30)	1 (1.30)	4 (5.00)		20 (12.50)	4 (2.50)	16 (10.00)	
<b>pN stage</b>				0.363				0.755
N0	45 (56.30)	22 (27.50)	23 (28.70)		65 (40.63)	18 (11.25)	47 (29.38)	
N1	26 (32.50)	14 (17.50)	12 (15.00)		63 (39.38)	21 (13.13)	42 (26.25)	
N2	5 (6.25)	2 (2.50)	3 (3.75)		10 (6.25)	3 (1.88)	7 (4.38)	
N3	1 (1.25)	1 (1.25)	0 (0.00)		6 (3.75)	1 (0.63)	5 (3.13)	
NX	3 (3.75)	0 (0.00)	3 (3.75)		16 (10.00)	3 (1.88)	13 (8.13)	
<b>pM stage</b>				0.785				0.856
M0	70 (87.50)	34 (42.50)	36 (45.00)		121 (75.63)	36 (22.50)	85 (53.13)	
M1	3 (3.75)	1 (1.25)	2 (2.50)		9 (5.63)	2 (1.25)	7 (4.38)	
MX	7 (8.75)	4 (5.00)	3 (3.75)		30 (18.75)	8 (5.00)	22 (13.75)	
<b>pTNM stage</b>				0.438				0.631
I	7 (8.75)	5 (6.25)	2 (2.50)		17 (10.63)	3 (1.88)	14 (8.75)	
II	46 (57.50)	21 (26.25)	25 (31.25)		66 (42.50)	21 (13.13)	47 (29.38)	
III	22 (27.50)	12 (15.00)	10 (12.50)		49 (30.63)	16 (10.00)	33 (20.63)	
IV	4 (5.00)	1 (1.25)	3 (3.75)		8 (5.00)	1 (0.63)	7 (4.38)	
Unknown	1 (1.25)	0 (0.00)	1 (1.25)		18 (11.25)	5 (3.13)	13 (8.13)	
<b>Resection margin</b>				0.617				0.215
R0 resection	65 (81.25)	33 (41.25)	32 (40.00)		121 (75.63)	35 (21.88)	86 (53.75)	
R1 resection	6 (7.50)	3 (3.75)	3 (3.75)		13 (8.13)	6 (3.75)	7 (4.38)	
Unknown	9 (11.25)	3 (3.75)	6 (7.50)		26 (16.25)	5 (3.13)	21 (13.13)	