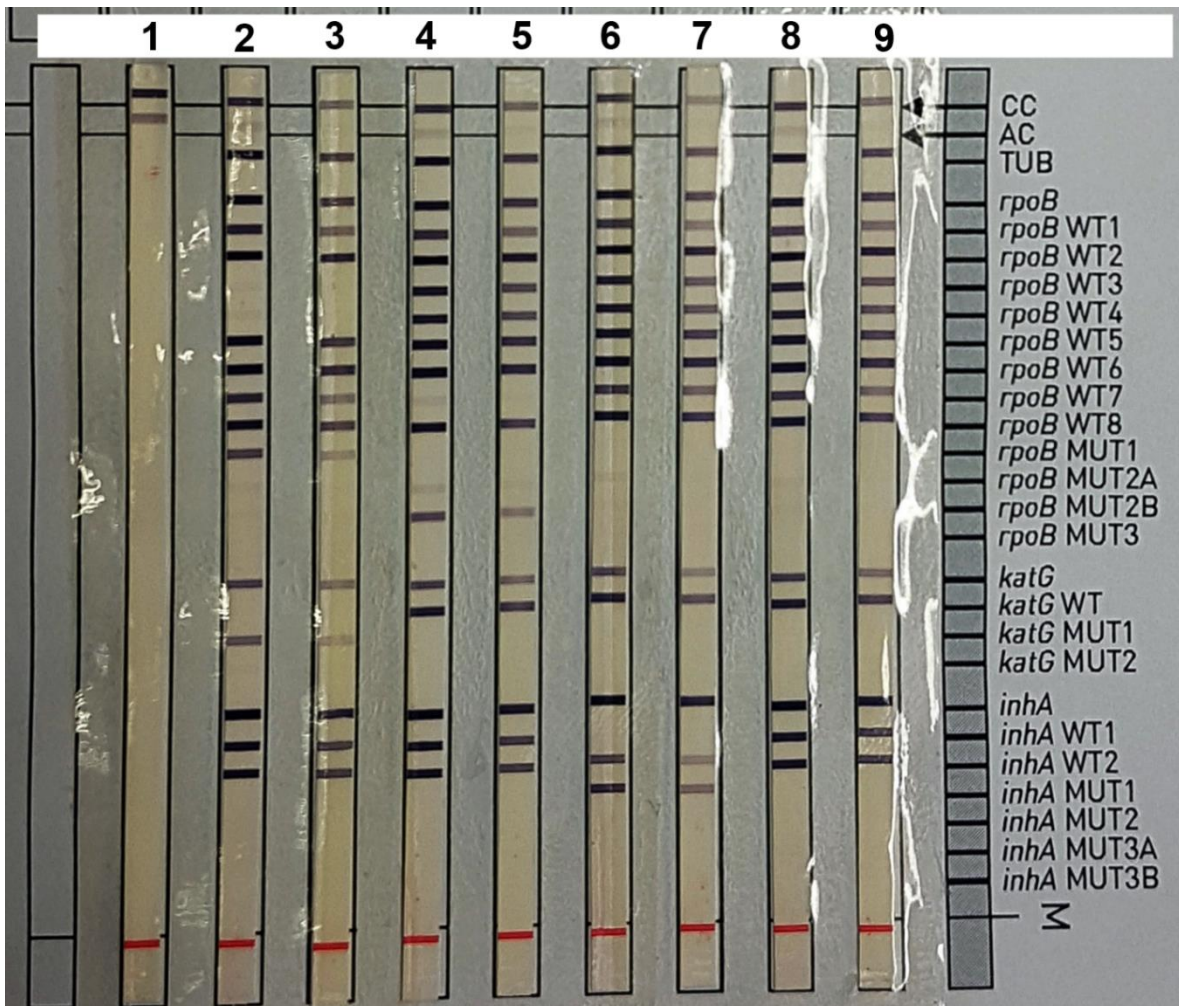


Supplementary materials



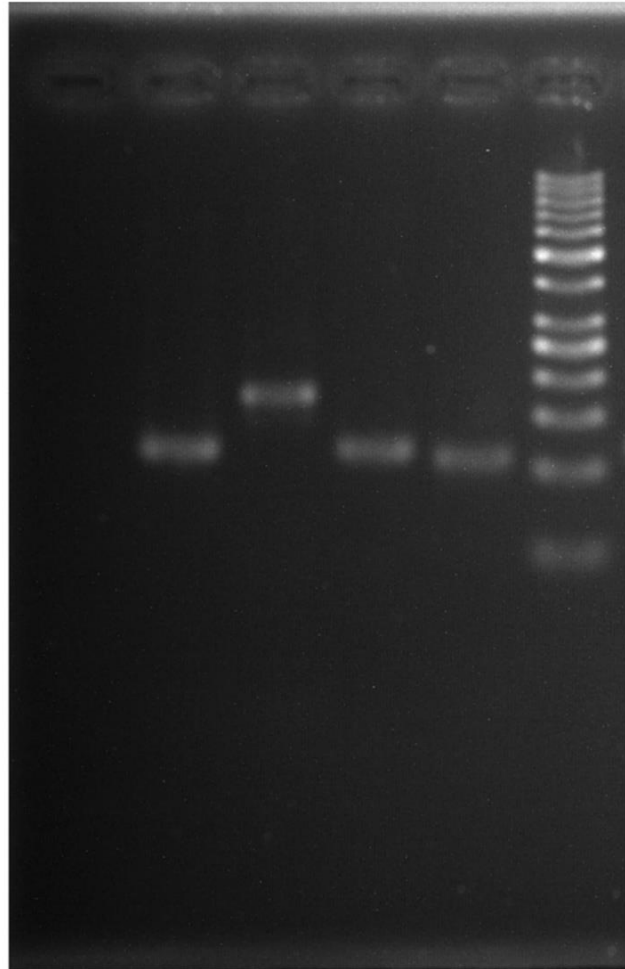
Supplementary Figure S1: Genotypic drug resistance profiles of MTB samples by the GenoType MTBDRplus assay. Lane 1; negative control, lane 2 and 3; MDR, lane 4 and 5; RIF-R, lane 6 and 7; INH-R, lane 8 and 9; H37Rv.

Supplementary Table S1 Phenotypic drug resistance profiles of MTB samples by the GenoType MTBDRplus assay.

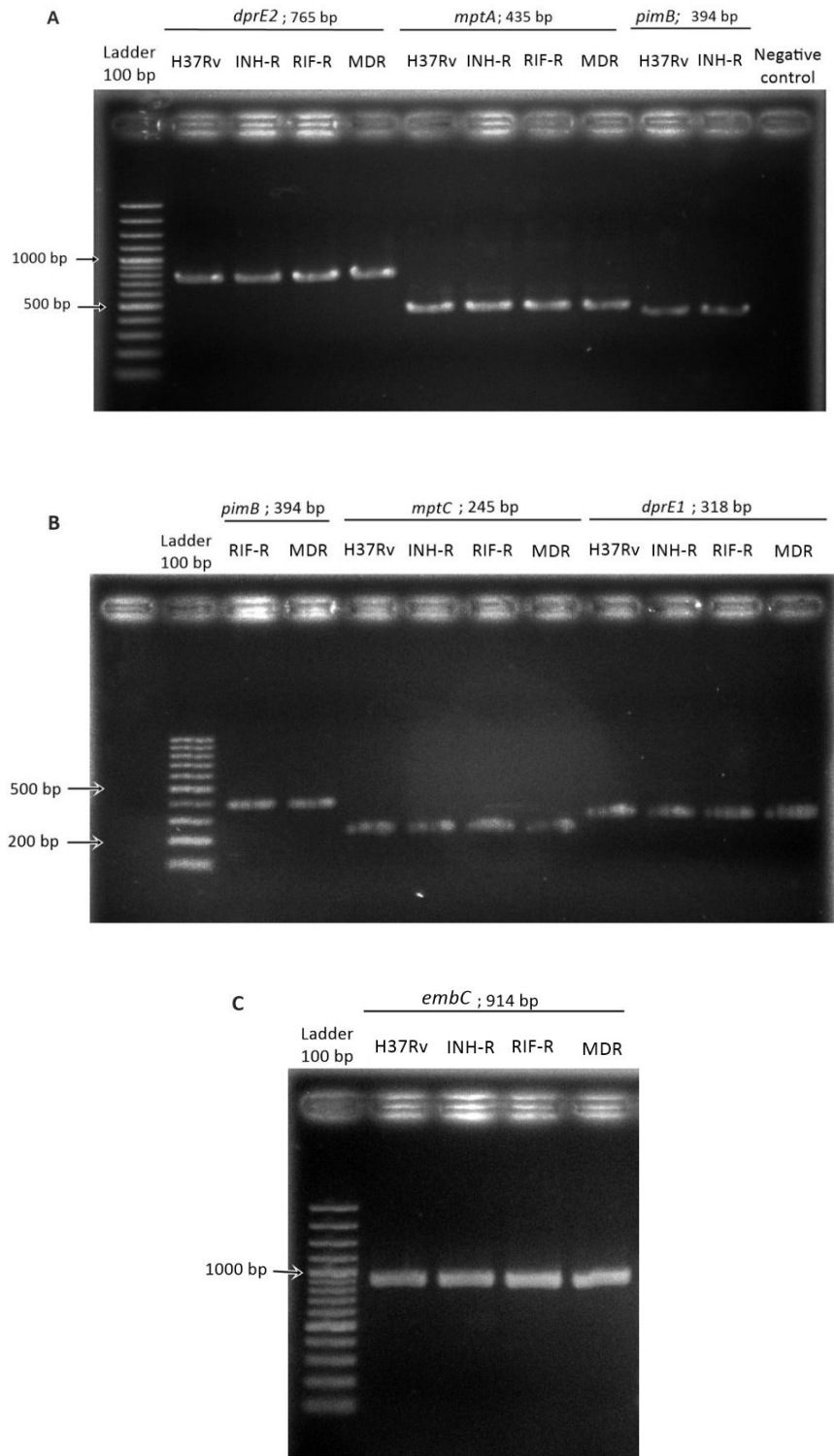
Sample	Control	INH	RIF	STM	ETM	PNB	Result
1.H37Rv	4+	S	S	S	S	S	Drug susceptible
	3+	S	S	S	S	S	
2.H37Rv	4+	S	S	S	S	S	Drug susceptible
	3+	S	S	S	S	S	
3.INH-R	4+	4+	S	S	S	S	Isoniazid resistance
	3+	3+	S	S	S	S	
4.INH-R	4+	4+	S	S	S	S	Isoniazid resistance
	4+	4+	S	S	S	S	
5.RIF-R	4+	S	4+	S	S	S	Rifampin resistance
	3+	S	3+	S	S	S	
6.RIF-R	4+	S	4+	S	S	S	Rifampin resistance
	3+	S	3+	S	S	S	
7.MDR	4+	4+	4+	4+	4+	S	MDR
	3+	3+	3+	3+	1+	S	
8.MDR	4+	4+	4+	4+	4+	S	MDR
	3+	3+	3+	3+	1+	S	

Notes: INH; isoniazid, RIF; rifampin, STM; streptomycin, ETM; ethambutol, PNB; p-Nitrobenzoic acid, S; susceptible.

sigA *hspX* *sigE* *tgs1* Ladder
116 bp 173 bp 114 bp 107 bp 50 bp



Supplementary Figure S2: PCR products using primers and probes target stress-related genes.



Supplementary Figure S3: specificity of ManLAM-related gene primers (a-c)