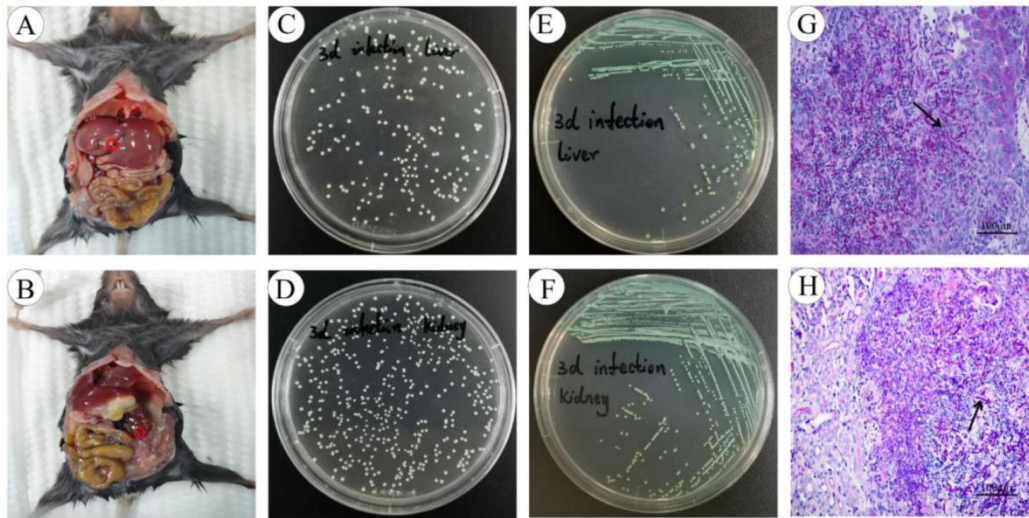


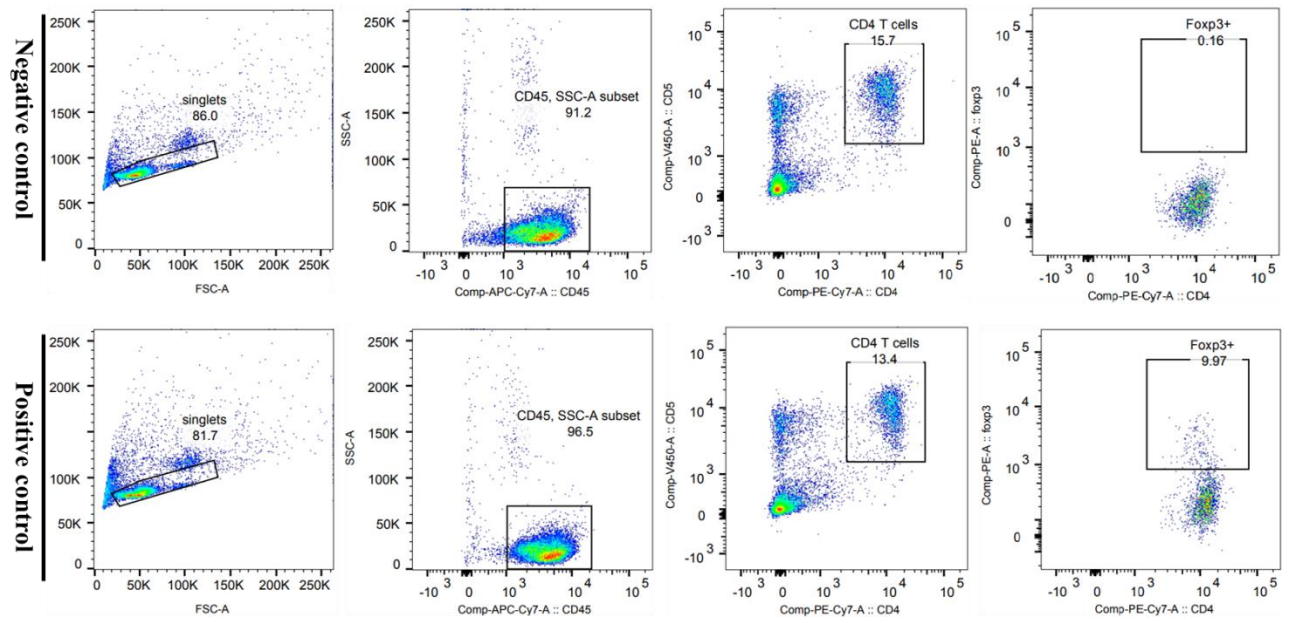
S1 Fig



S1 Fig. Generation of a mouse model of *C. albicans* infection

(A) Mouse liver infection focus. (B) Mouse kidney infection focus. (C) Plating liver tissue in Sabouraud's medium. (D) Plating kidney tissue in Sabouraud's medium. (E) Identification of *C. albicans* isolated from the liver. (F) Identification of *C. albicans* isolated from the kidney. (G) Periodic acid-Schiff (PAS) staining and microscopic examination of liver tissue ($\times 400$ magnification, scale bar = $100\mu\text{m}$). (H) PAS staining and microscopic examination of kidney tissue ($\times 400$ magnification, scale bar = $100\mu\text{m}$). Arrows indicate representative *C. albicans* hyphae.

S2 Fig



S2 Fig. The gating strategy of Treg cells in flow cytometry.

Negative control: Without Foxp3 antibodies. Positive control: With Foxp3 antibodies.