

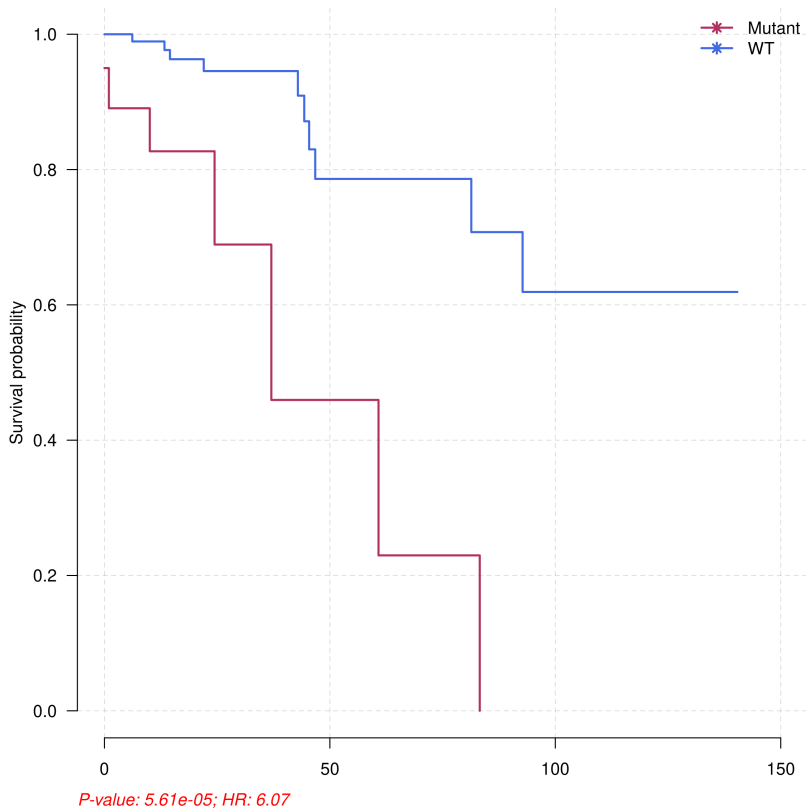
ABL1	CDK12	FGF14	JAK1	NKX2-1	RUNX1
ARAF	CDK4	FGF19	JAK2	NOTCH1	RUNX1T1
ABL2	CDK6	FGF23	JAK3	NOTCH2	SDHA
ARFRP1	CDK8	FGF3	JUN	NOTCH3	SDHB
ACVR1B	CDKN1A	FGF4	KAT6A (MYST3)	NPM1	SDHC
AKT1	CDKN2A	FGFR1	KDM5A	NSD1	SETD2
ARID1B	CDKN2B	FGFR2	KDM5C	NTRK1	SF3B1
AKT2	CDKN2C	FGFR3	KDM6A	NTRK2	SLIT2
ARID2	CEBPA	FGFR4	KDR	NTRK3	SMAD2
AKT3	CHD2	FH	KEAP1	NUP93	SMAD3
ASXL1	CHD4	FLCN	KEL	PAK3	SMAD4
ALK	CHEK1	FLT1	KIT	PALB2	SMARCA4
ATM	CHEK2	FLT3	KLHL6	PARK2	SMARCB1
AMER1 (FAM123B)	CIC	FLT4	KMT2A	PAX5	SMO
ATR	CRKL	FOXP1	KMT2C (MLL3)	PDCD1LG2	SOCS1
ATRX	CSF1R	FUBP1	KMT2D (MLL2)	PDGFRB	SOX2
AURKA	CTNNA1	GATA1	KRAS	PIK3C2B	SPEN
AURKB	CTNNB1	GATA2	LMO1	PIK3CA	SPOP
AXIN1	CUL3	GATA3	LRP1B	PIK3CB	SPTA1
AXL	CYLD	GATA4	LYN	PIK3CG	SRC
BAP1	DAXX	GATA6	LZTR1	PIK3R1	STAG2
BARD1	DDR2	GID4 (C17orf39)	MAGI2	PIK3R2	STAT3
BCL2L1	DNMT3A	GLI1	MAP2K2	PMS2	STK11
BCL2L2	DOT1L	GNA11	MAP2K4	POLD1	SUFU
BCL6	EGFR	GNA13	MAP3K1	POLE	SYK
BCOR	EP300	GNAQ	MCL1	PPP2R1A	TAF1
BCORL1	EPHA3	GNAS	MDM2	PRDM1	TBX3
BLM	EPHA5	GPR124	MDM4	PREX2	TERC
BRAF	EPHA7	GRIN2A	MED12	PRKAR1A	TERT (promoter only)
BRCA1	EPHB1	GRM3	MEF2B	PRKCI	TET2
BRCA2	ERBB2	GSK3B	MEN1	PRKDC	TGFBR2
BRD4	ERBB3	H3F3A	MET	PRSS8	TNFAIP3
BRIP1	ERBB4	HGF	MITF	PTCH1	TNFRSF14
BTG1	ERG	HNF1A	MLH1	PTEN	TOP1
BTK	ERRFI1	HRAS	MPL	PTPN11	TOP2A
C11orf30 (EMSY)	ESR1	HSD3B1	MRE11A	QKI	TP53
CARD11	FAM46C	IDH1	MSH6	RAD50	TSC2
CBFB	FANCA	IDH2	MTOR	RAD51	TSHR
CBL	FANCC	IGF1R	MUTYH	RAF1	U2AF1
CCND1	FANCD2	IGF2	MYC	RANBP2	VEGFA
CCND2	FANCE	IKBKE	MYCL (MYCL1)	RARA	VHL
CCNE1	FANCG	IL7R	MYCN	RBM10	WT1
CD274	FANCL	INHBA	MYD88	RET	XPO1

CD79A	FAS	INPP4B	NF1	RICTOR	ZBTB2
CD79B	FAT1	IRF2	NF2	RNF43	ZNF217
CDC73	FBXW7	IRF4	NFE2L2	ROS1	ZNF703
CDH1	FGF10	IRS2	NFKBIA	RPTOR	

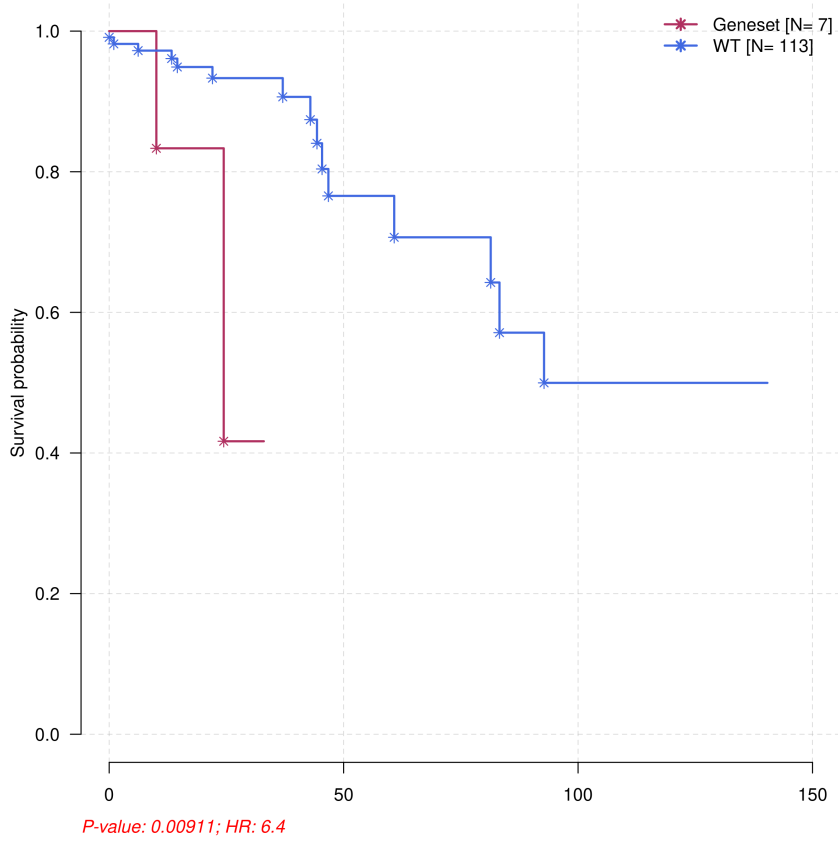
DNA Gene List: For the Detection of Select Rearrangements

ALK	BRCA2	ETV5	KIT	NTRK1	RET
BCL2	BRD4	ETV6	MSH2	NTRK2	ROS1
BCR	EGFR	FGFR1	MYB	PDGFRA	TMPRSS2
BRAF	ETV1	FGFR2	MYC	RAF1	
BRCA1	ETV4	FGFR3	NOTCH2	RARA	

Supplementary Table. DNA Gene List: Entire Coding Sequence for the Detection of Base Substitutions, Insertion/Deletions, and Copy Number Alterations



Supplementary Figure 1. Survival in FBXW7 mutated vs FBXW7 wild type stage II CRC COAD TCGA



Supplementary Figure 2. Correlation between survival and co-occurred mutation status of FBXW7- TP53 in stage II CRC COAD TCGA