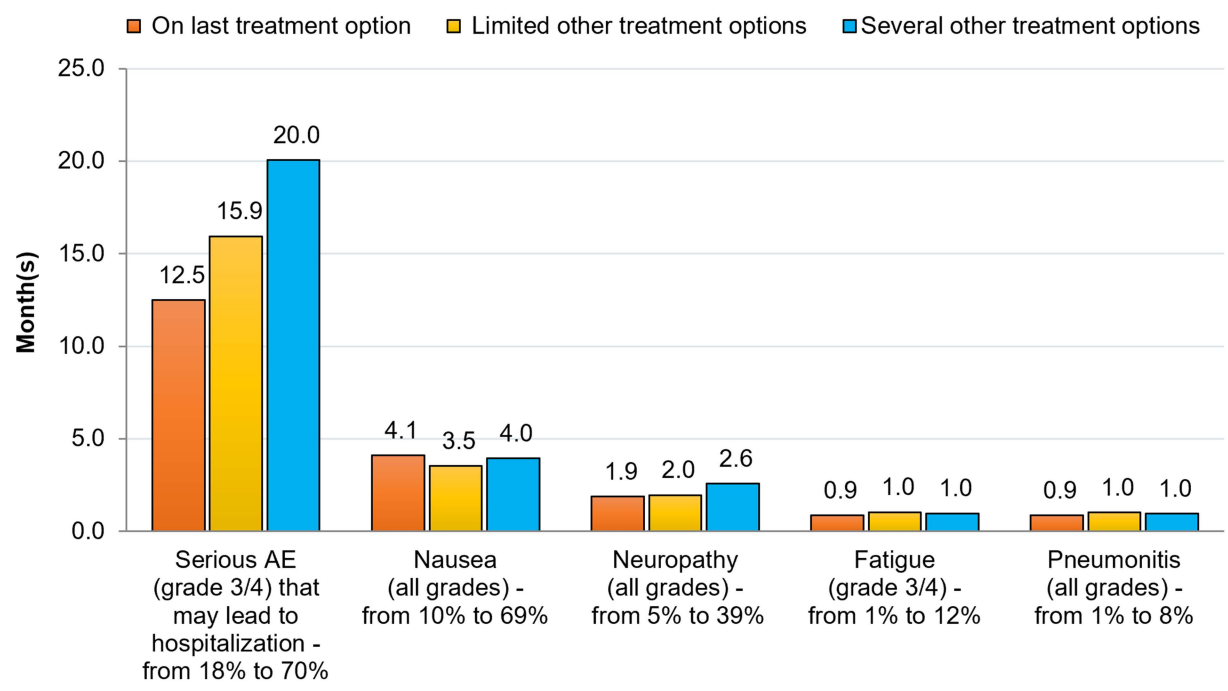
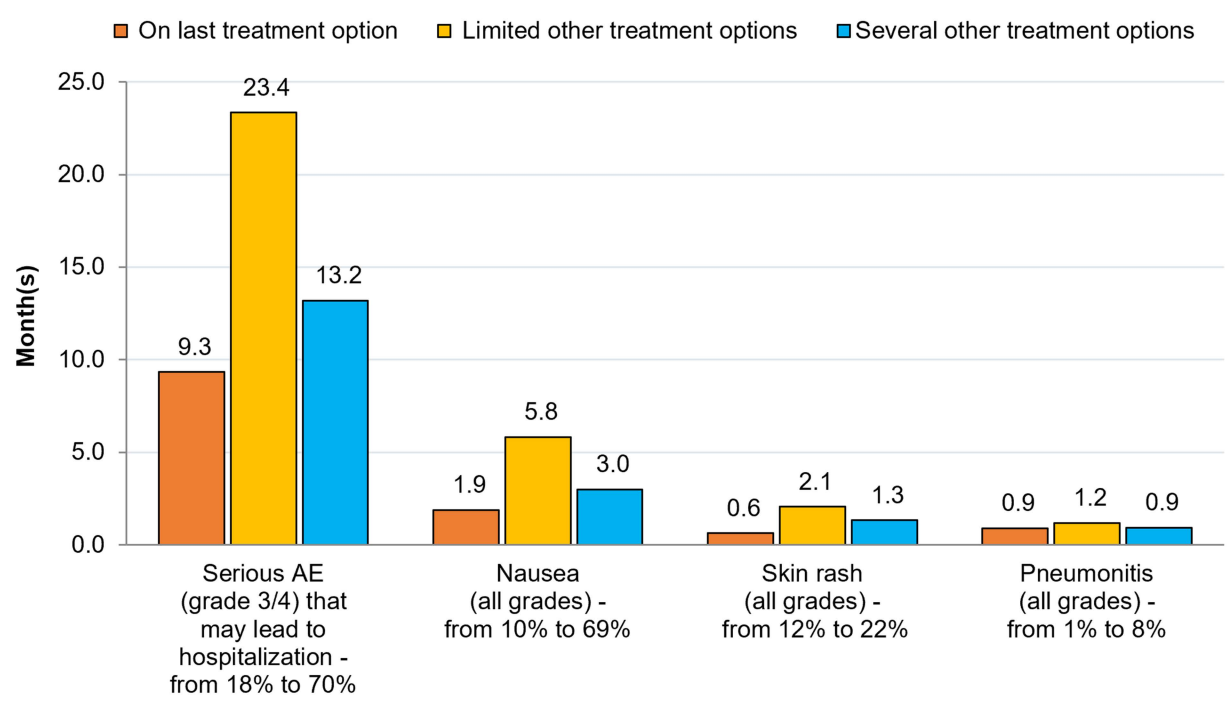


Supplemental Figure 1 Increases in number of OS months needed to accept increases in toxicity levels by employment status: Patients.

Abbreviations: AE, adverse event.

A**B**

Supplemental Figure 2 Increases in number of OS months needed to accept increases in toxicity levels by perception of future treatment options among (a) patients and (b) caregivers.

Abbreviations: AE, adverse event.