

Supplementary table 1 Summary of clinical dosimetric and physical parameters of IMRT planning in esophageal cancers

Parameters	MSW (Mean \pm SD)			
	0.5 cm	1 cm	1.5 cm	2 cm
Heart.V30 (%)	6.174 \pm 8.407	5.931 \pm 7.960	6.236 \pm 8.365	6.808 \pm 9.003
Heart.V40 (%)	2.852 \pm 3.824	2.745 \pm 3.600	2.920 \pm 3.865	3.523 \pm 4.667
H.Dmean (Gy)	6.130 \pm 6.524	6.097 \pm 6.439	6.177 \pm 6.51	6.084 \pm 6.61
Llung.V20 (%)	19.388 \pm 3.351	19.105 \pm 3.440	19.500 \pm 3.327	20.599 \pm 3.365
Llung.V30 (%)	8.838 \pm 3.270	8.630 \pm 3.256	8.652 \pm 3.269	9.267 \pm 3.608
Llung.Dmean (Gy)	10.833 \pm 1.403	10.759 \pm 1.503	10.842 \pm 1.51	10.934 \pm 1.678
Rlung.V20 (%)	20.195 \pm 3.064	20.534 \pm 2.873	20.584 \pm 3.048	20.253 \pm 3.055
Rlung.V30 (%)	9.347 \pm 2.719	9.467 \pm 2.914	9.884 \pm 2.776	9.919 \pm 2.936
Rlung.Dmean (Gy)	10.502 \pm 1.556	10.59 \pm 1.606	10.642 \pm 1.654	10.479 \pm 1.660
Spine.Dmax (Gy)	41.905 \pm 1.795	42.123 \pm 1.671	42.444 \pm 1.503	43.615 \pm 1.509
PTV51.D95 (Gy)	51.776 \pm 0.470	51.84 \pm 0.607	51.714 \pm 0.713	51.44 \pm 1.158
PTV51.CI	0.854 \pm 0.049	0.848 \pm 0.047	0.839 \pm 0.047	0.790 \pm 0.048
PTV51.HI	1.212 \pm 0.022	1.213 \pm 0.023	1.224 \pm 0.025	1.256 \pm 0.045
PTV60.CI	0.748 \pm 0.079	0.728 \pm 0.097	0.705 \pm 0.106	0.604 \pm 0.126
PTV60.HI	1.060 \pm 0.012	1.064 \pm 0.016	1.071 \pm 0.016	1.094 \pm 0.026
Monitor units	668.896 \pm 57.900	573.022 \pm 59.361	540.501 \pm 57.386	574.883 \pm 92.867
Control points	144.250 \pm 1.164	137.350 \pm 5.696	130.100 \pm 9.442	116.700 \pm 9.669
Delivery times (sec)	208.754 \pm 21.616	182.504 \pm 13.074	180.019 \pm 14.807	189.638 \pm 24.712
GPR.2.2AD (%)	95.040 \pm 2.397	95.625 \pm 2.454	95.465 \pm 2.052	94.680 \pm 2.336
GPR.2.2RD (%)	95.520 \pm 1.696	96.140 \pm 2.110	96.185 \pm 1.477	96.490 \pm 1.363
GPR.3.3AD (%)	98.510 \pm 1.039	98.875 \pm 0.962	98.740 \pm 0.859	98.825 \pm 0.685
GPR.3.3RD (%)	98.780 \pm 0.916	99.140 \pm 0.849	99.180 \pm 0.608	99.395 \pm 0.341

Note:

Heart.V30 (%) : The percent volume receiving a dose of 30Gy of Heart

Heart.V40 (%) : The percent volume receiving a dose of 40Gy of Heart

H.Dmean (Gy) : The mean radiation dose of Heart

Llung.V20 (%) : The percent volume receiving a dose of 20Gy of left lung

Llung.V30 (%) : The percent volume receiving a dose of 30Gy of left lung

Llung.Dmean (Gy) : The mean radiation dose of left lung

Rlung.V20 (%) : The percent volume receiving a dose of 20Gy of right lung

Rlung.V30 (%) : The percent volume receiving a dose of 20Gy of right lung

Rlung.Dmean (Gy) : The mean radiation dose of right lung

Spine.Dmax (Gy) : The maximal radiation dose of Spine

PTV51.D95 (Gy) : The radiation dose covering 95% volume of PTV51

PTV51.CI : The Conformity index of PTV51

PTV51.HI : The Homogeneity index of PTV51

PTV60.CI : The Conformity index of PTV60

PTV60.HI : The Homogeneity index of PTV60

GPR.2.2AD (%) : Absolute Dose of GPR with a standard of 2% dose difference and a 2 mm distance to agreement

GPR.2.2RD (%) : Relative Dose of GPR with a standard of 2% dose difference and a 2 mm distance to agreement

GPR.3.3AD (%) : Absolute Dose of GPR with a standard of 3% dose difference and a 3 mm distance to agreement

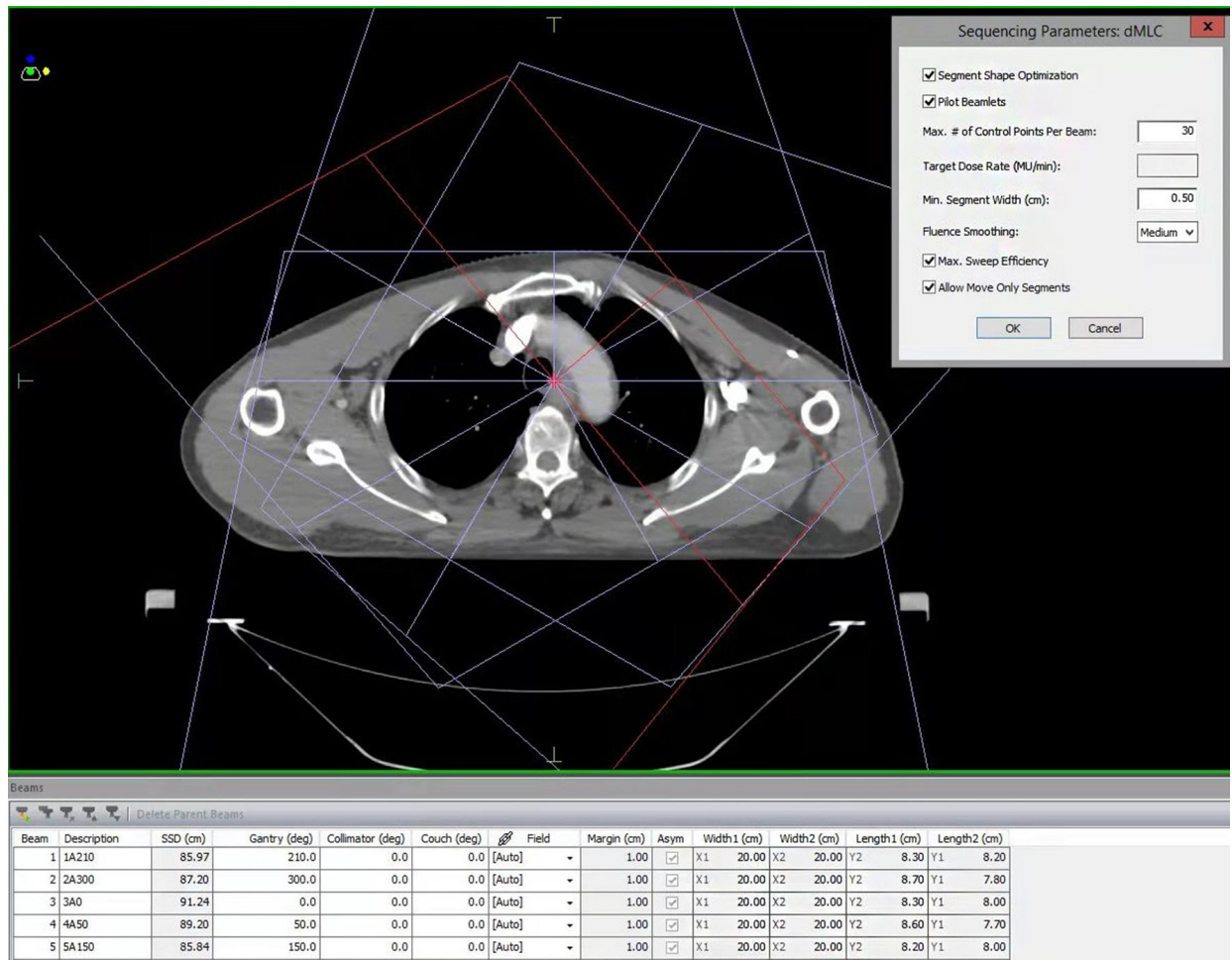
GPR.3.3RD (%) : Relative Dose of GPR with a standard of 3% dose difference and a 3 mm distance to agreement

Supplementary table 2 Summary of clinical dosimetric and physical parameters in esophageal cancers

Parameter	MSW Groups	Mean \pm SD	Relative value (95%Ci)
	0.5(ref)	1	1
Heart.V30 (%)	1.0	1.011 \pm 0.089	1.011 (0.913 - 1.110)
	1.5	1.028 \pm 0.071	1.028 (0.929 - 1.126)
	2.0	1.005 \pm 0.299	1.005 (0.906 - 1.103)
	0.5(ref)	1	1
Heart.V40 (%)	1.0	1.012 \pm 0.091	1.012 (0.859 - 1.165)
	1.5	1.061 \pm 0.196	1.061 (0.909 - 1.214)
	2.0	1.022 \pm 0.445	1.022 (0.870 - 1.175)
	0.5(ref)	1	1
H.Dmean (Gy)	1.0	0.988 \pm 0.048	0.988 (0.945 - 1.030)
	1.5	1.006 \pm 0.079	1.006 (0.963 - 1.049)
	2.0	0.961 \pm 0.108	0.961 (0.919 - 1.004)
	0.5(ref)	1	1
Llung.V20 (%)	1.0	0.986 \pm 0.065	0.986 (0.944 - 1.028)
	1.5	1.011 \pm 0.089	1.011 (0.969 - 1.052)
	2.0	1.072 \pm 0.121	1.072 (1.030 - 1.114) ^{ab}
	0.5(ref)	1	1
Llung.V30 (%)	1.0	0.975 \pm 0.085	0.975 (0.934 - 1.016)
	1.5	0.973 \pm 0.072	0.973 (0.932 - 1.014)
	2.0	1.050 \pm 0.107	1.050 (1.009 - 1.091) ^a
	0.5(ref)	1	1
Llung.Dmean (Gy)	1.0	0.992 \pm 0.030	0.992 (0.976 - 1.009)
	1.5	1.000 \pm 0.032	1.000 (0.984 - 1.016)
	2.0	1.007 \pm 0.048	1.007 (0.991 - 1.023)
	0.5(ref)	1	1
Rlung.V20 (%)	1.0	1.020 \pm 0.051	1.020 (0.992 - 1.047)
	1.5	1.021 \pm 0.068	1.021 (0.994 - 1.048)
	2.0	1.005 \pm 0.086	1.005 (0.978 - 1.032)
	0.5(ref)	1	1
Rlung.V30 (%)	1.0	1.008 \pm 0.038	1.008 (0.964 - 1.051)
	1.5	1.063 \pm 0.087	1.063 (1.020 - 1.106) ^a
	2.0	1.065 \pm 0.121	1.065 (1.022 - 1.109) ^a
	0.5(ref)	1	1
Rlung.Dmean (Gy)	1.0	1.008 \pm 0.017	1.008 (0.994 - 1.022)
	1.5	1.012 \pm 0.024	1.012 (0.998 - 1.026)
	2.0	0.997 \pm 0.044	0.997 (0.983 - 1.011)
	0.5(ref)	1	1
Spine.Dmax (Gy)	1.0	1.005 \pm 0.014	1.005 (0.998 - 1.012)
	1.5	1.013 \pm 0.014	1.013 (1.006 - 1.020) ^a
	2.0	1.041 \pm 0.022	1.041 (1.034 - 1.048) ^{abc}
	0.5(ref)	1	1
PTV51.D95 (Gy)	1.0	1.001 \pm 0.005	1.001 (0.996 - 1.006)

	1.5	0.999 ± 0.007	0.999 (0.994 - 1.004)
	2.0	0.993 ± 0.015	0.993 (0.989 - 0.998) ^a
	0.5(ref)	1	1
PTV51.CI	1.0	0.993 ± 0.016	0.993 (0.980 - 1.006)
	1.5	0.983 ± 0.014	0.983 (0.970 - 0.996) ^a
	2.0	0.927 ± 0.042	0.927 (0.914 - 0.940) ^{abc}
	0.5(ref)	1	1
PTV51.HI	1.0	1.001 ± 0.013	1.001 (0.992 - 1.009)
	1.5	1.010 ± 0.014	1.010 (1.001 - 1.019) ^a
	2.0	1.036 ± 0.029	1.036 (1.027 - 1.044) ^{abc}
	0.5(ref)	1	1
PTV60.CI	1.0	0.970 ± 0.055	0.970 (0.931 - 1.010)
	1.5	0.939 ± 0.066	0.939 (0.900 - 0.979) ^a
	2.0	0.805 ± 0.128	0.805 (0.766 - 0.845) ^{abc}
	0.5(ref)	1	1
PTV60.HI	1.0	1.004 ± 0.007	1.004 (0.997 - 1.010)
	1.5	1.011 ± 0.010	1.011 (1.004 - 1.017) ^a
	2.0	1.033 ± 0.020	1.033 (1.026 - 1.040) ^{abc}
	0.5(ref)	1	1
Monitor units	1.0	0.858 ± 0.069	0.858 (0.815 - 0.900) ^a
	1.5	0.812 ± 0.095	0.812 (0.769 - 0.854) ^a
	2.0	0.861 ± 0.137	0.861 (0.819 - 0.904) ^a
	0.5(ref)	1	1
Control points	1.0	0.952 ± 0.038	0.952 (0.927 - 0.977) ^a
	1.5	0.902 ± 0.063	0.902 (0.877 - 0.927) ^a
	2.0	0.809 ± 0.066	0.809 (0.784 - 0.834) ^{abc}
	0.5(ref)	1	1
Delivery times (sec)	1.0	0.879 ± 0.064	0.879 (0.840 - 0.918) ^a
	1.5	0.870 ± 0.105	0.870 (0.831 - 0.909) ^a
	2.0	0.913 ± 0.119	0.913 (0.874 - 0.952) ^a
	0.5(ref)	1	1
GPR.2.2AD (%)	1.0	1.006 ± 0.018	1.006 (0.999 - 1.014)
	1.5	1.005 ± 0.013	1.005 (0.997 - 1.012)
	2.0	0.996 ± 0.014	0.996 (0.989 - 1.004)
	0.5(ref)	1	1
GPR.2.2RD (%)	1.0	1.007 ± 0.016	1.007 (1.000 - 1.013)
	1.5	1.007 ± 0.011	1.007 (1.000 - 1.014) ^a
	2.0	1.01 ± 0.012	1.010 (1.004 - 1.017) ^a
	0.5(ref)	1	1
GPR.3.3AD (%)	1.0	1.004 ± 0.009	1.004 (1.001 - 1.007) ^a
	1.5	1.002 ± 0.006	1.002 (0.999 - 1.006)
	2.0	1.003 ± 0.009	1.003 (1.000 - 1.007)
	0.5(ref)	1	1
GPR.3.3RD (%)	1.0	1.004 ± 0.008	1.004 (1.001 - 1.007) ^a
	1.5	1.004 ± 0.005	1.004 (1.001 - 1.007) ^a
	2.0	1.006 ± 0.008	1.006 (1.003 - 1.009) ^a

- a $P < 0.05$, vs. 0.5 cm MSW Generalized Linear Mixed Regression Analysis
- b $P < 0.05$, vs. 1.0 cm MSW Generalized Linear Mixed Regression Analysis
- c $P < 0.05$, vs. 1.5 cm MSW Generalized Linear Mixed Regression Analysis



Supplementary Figure 1. The beam's eye view of an example treatment plan.