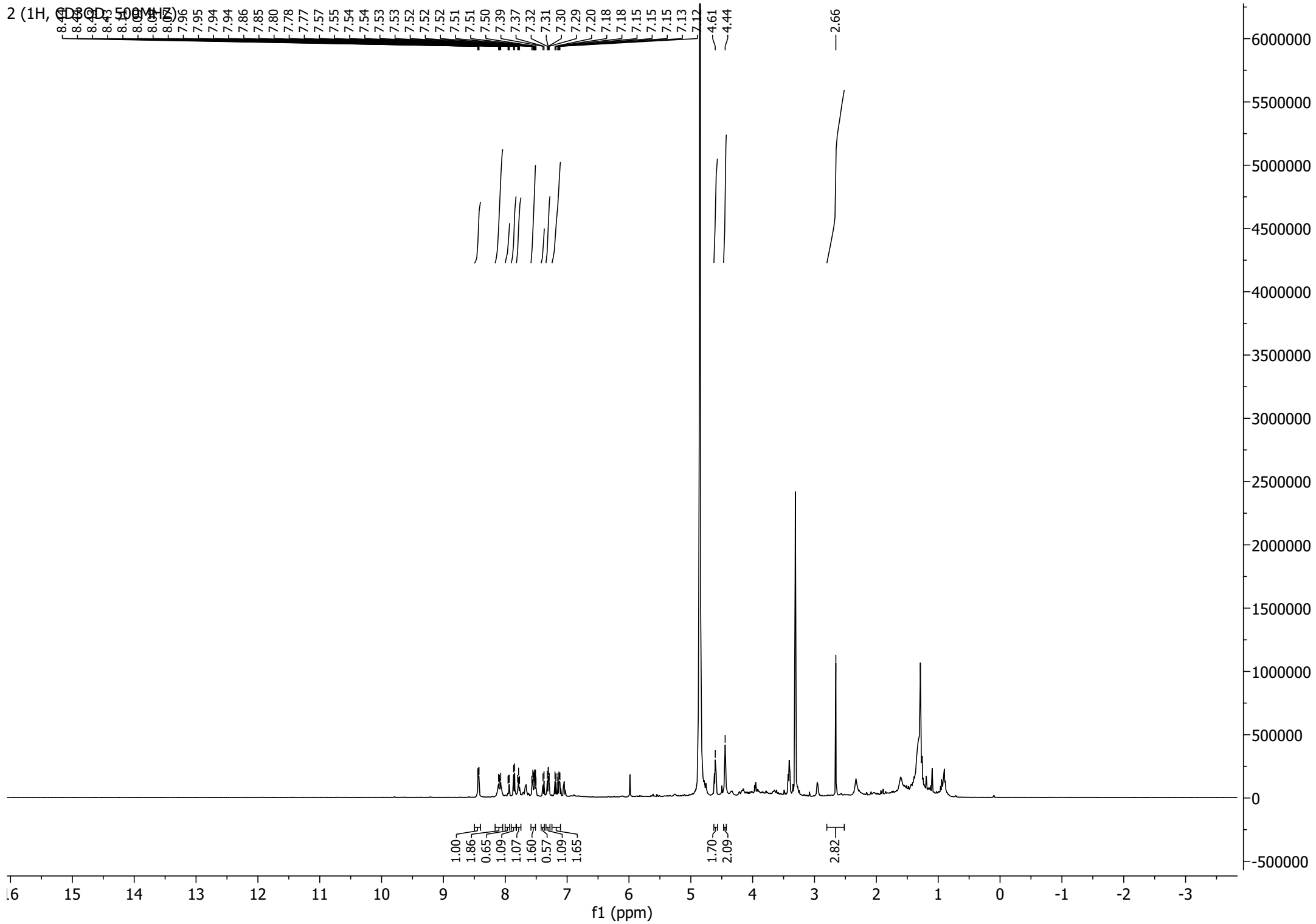
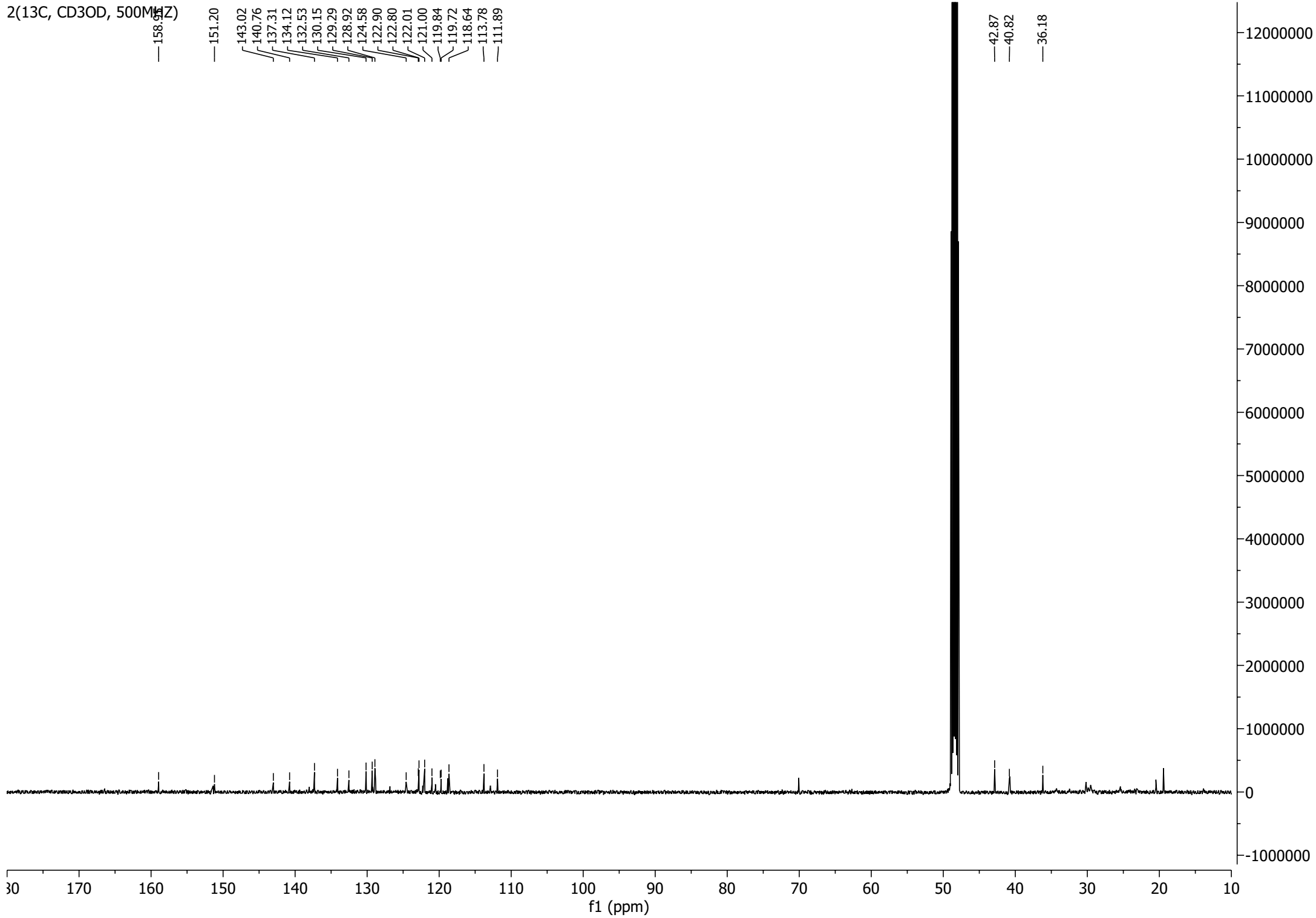


2 (1H, CDCl₃, 500 MHz)



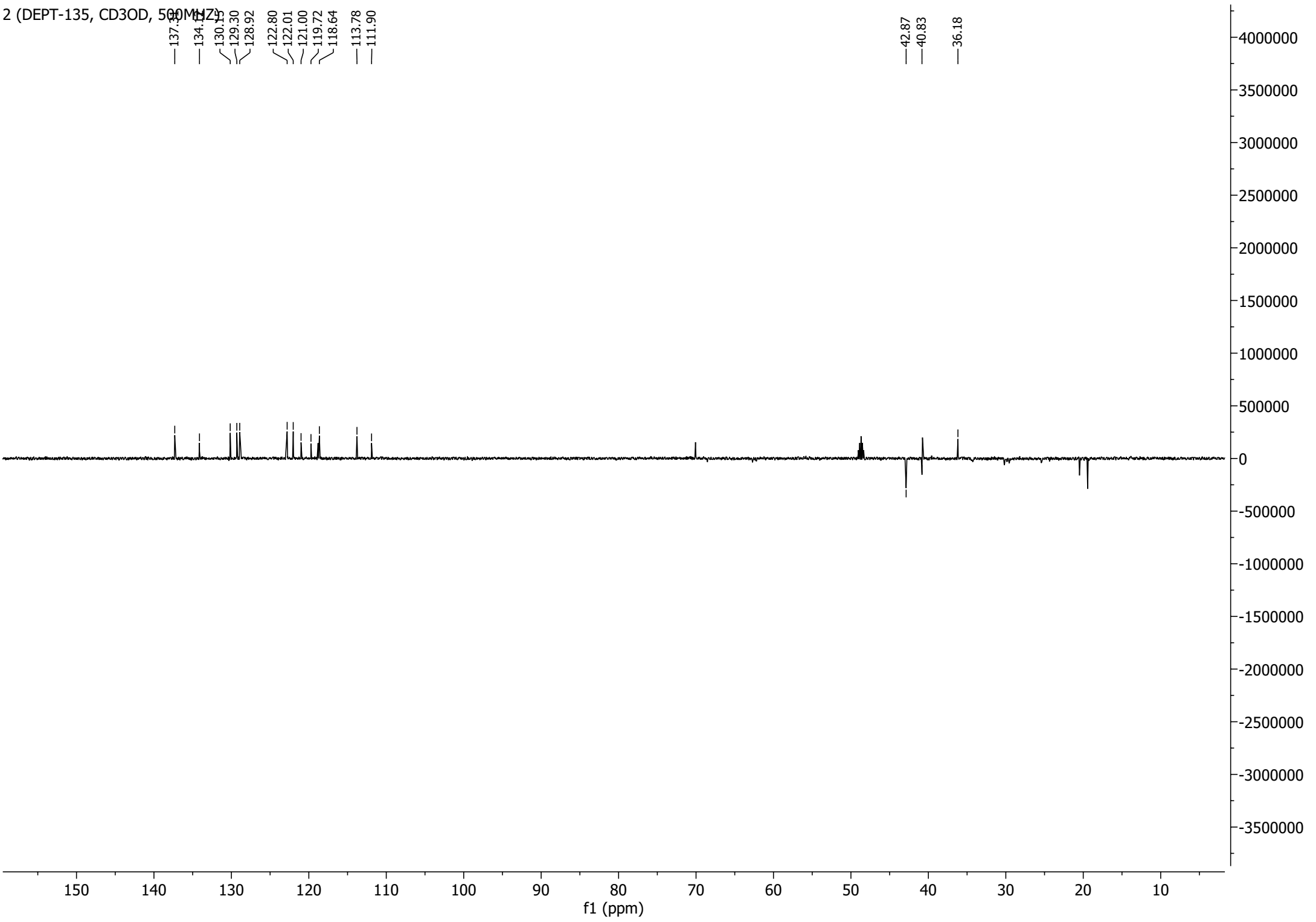
2(13C, CD3OD, 500MHz)

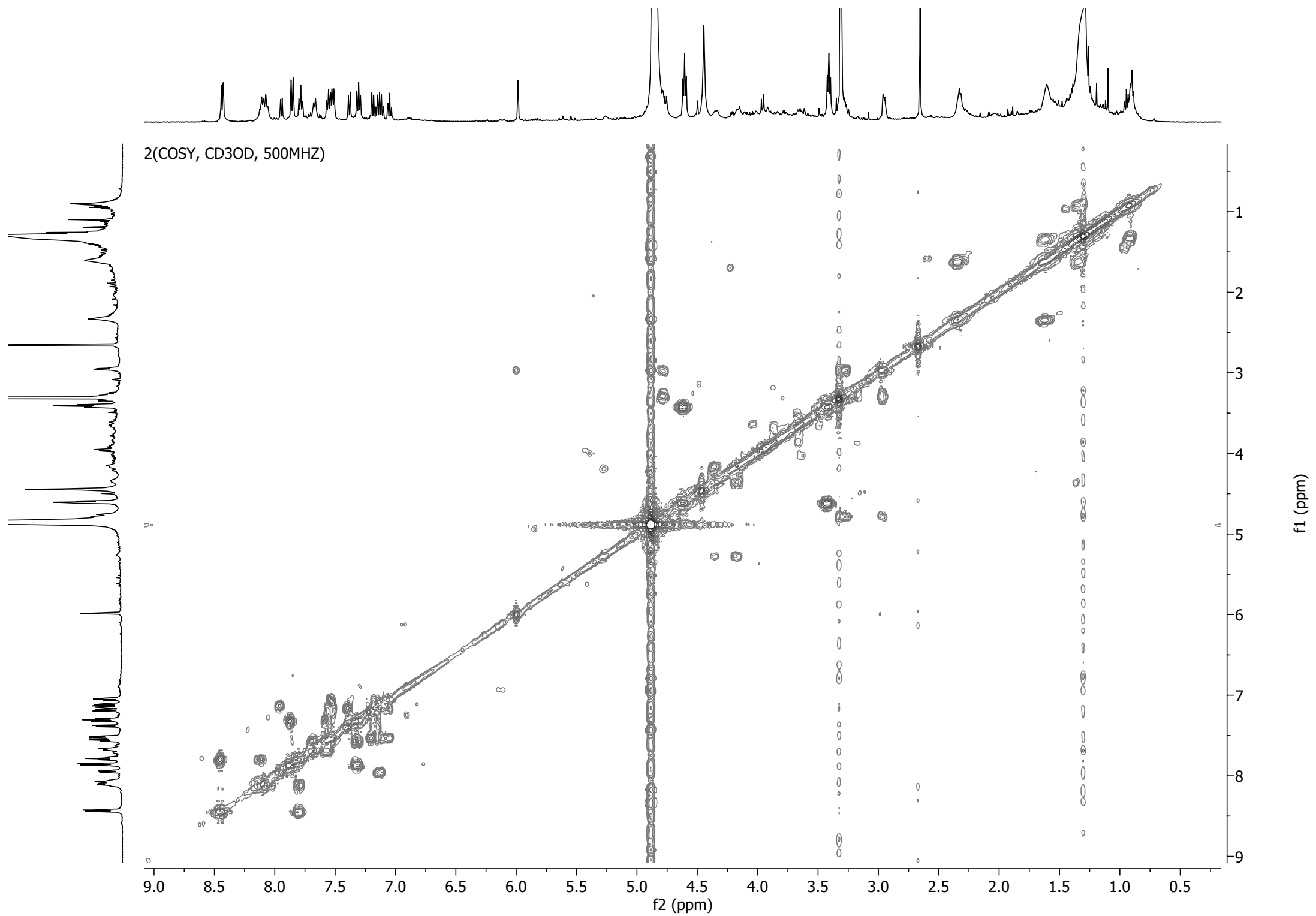


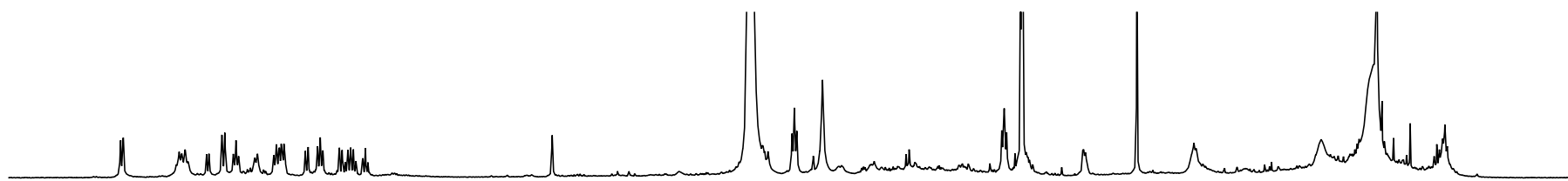
2 (DEPT-135, CD3OD, 500 MHz)

137.39
134.11
130.15
129.30
128.92
122.80
122.01
121.00
119.72
118.64
113.78
111.90

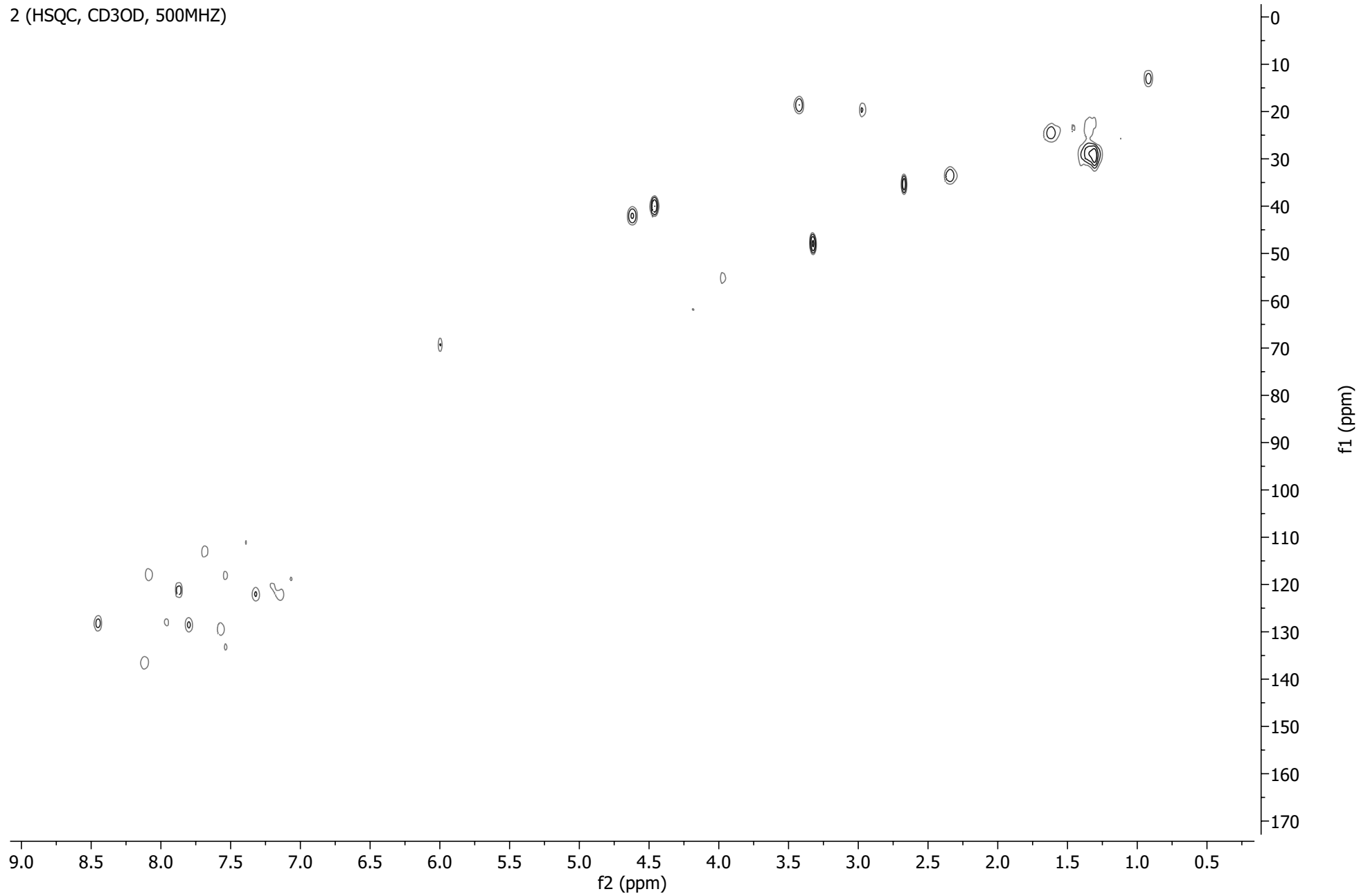
42.87
40.83
36.18

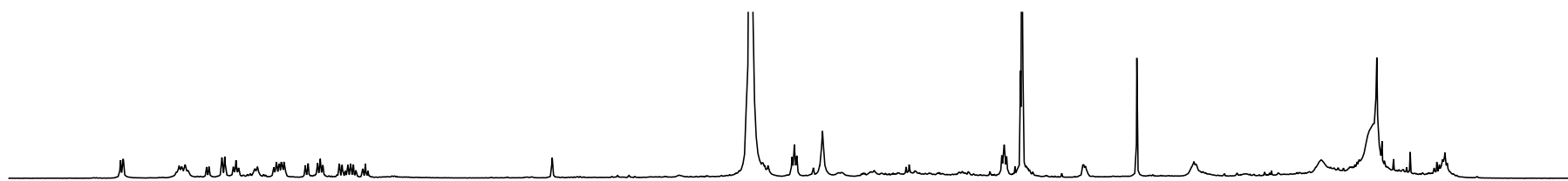






2 (HSQC, CD3OD, 500MHZ)





2 (HMBC, CD3OD, 500MHZ)

