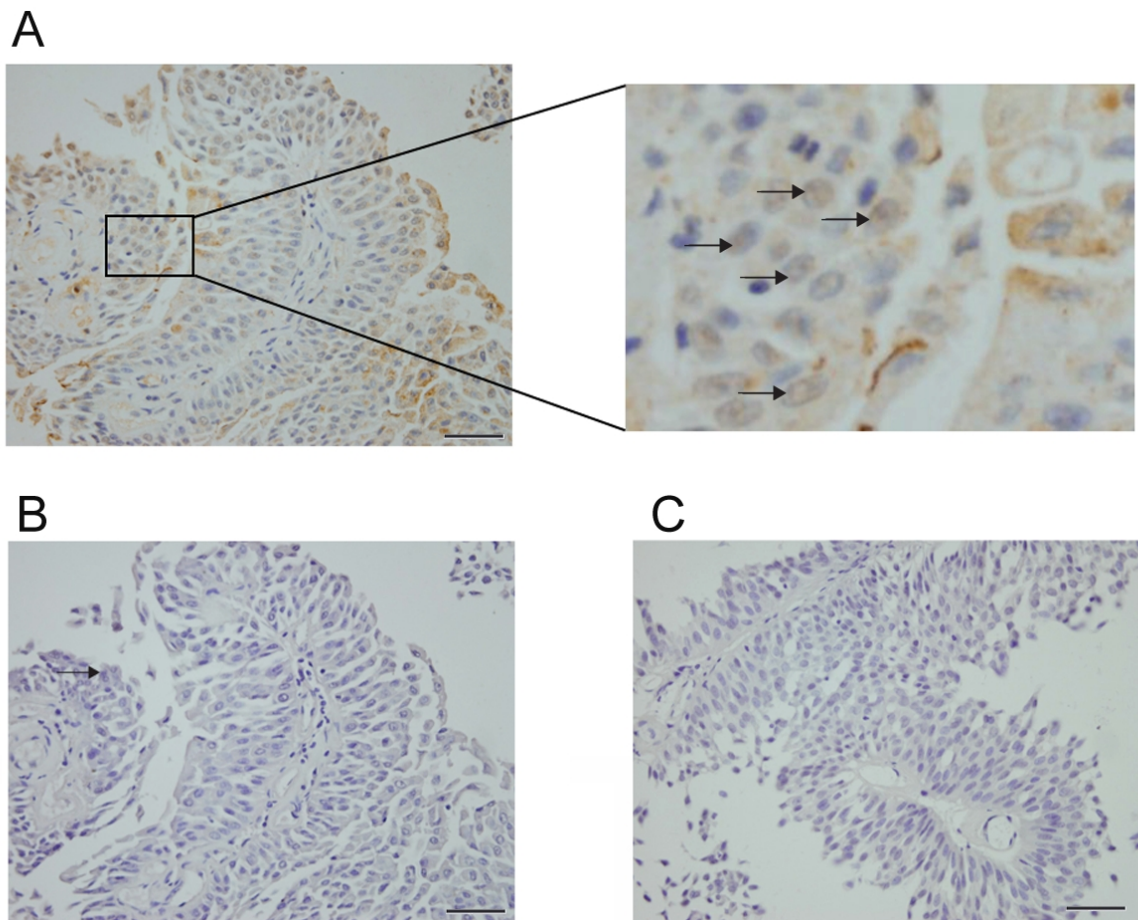


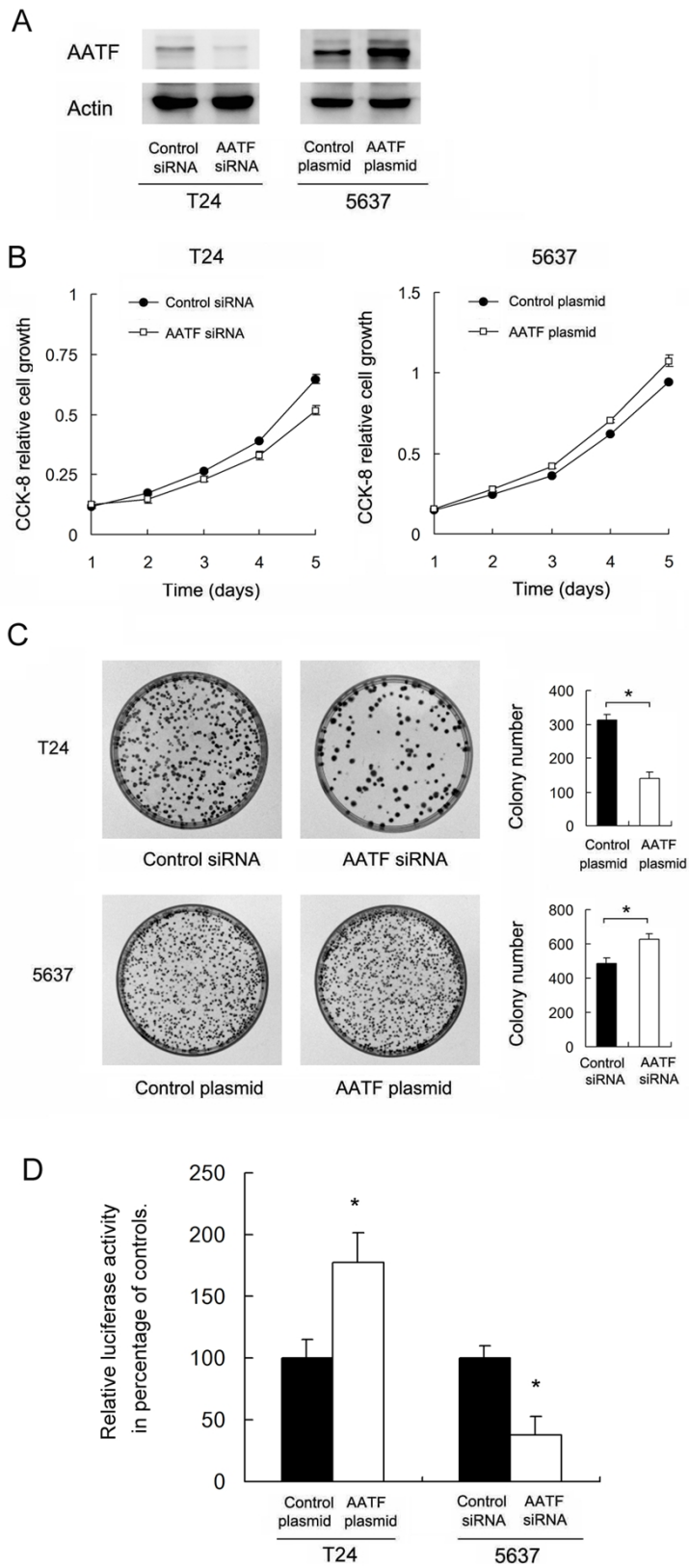
Supplementary Figure1



Supplementary Figure1. Negative control of AATF staining

A. Magnified image in Figure 1C showed nuclear staining (indicated by arrows) B. Negative control of Figure 1C using IgG showed no nuclear staining. C. Negative control of Figure 1D using IgG showed no nuclear staining.

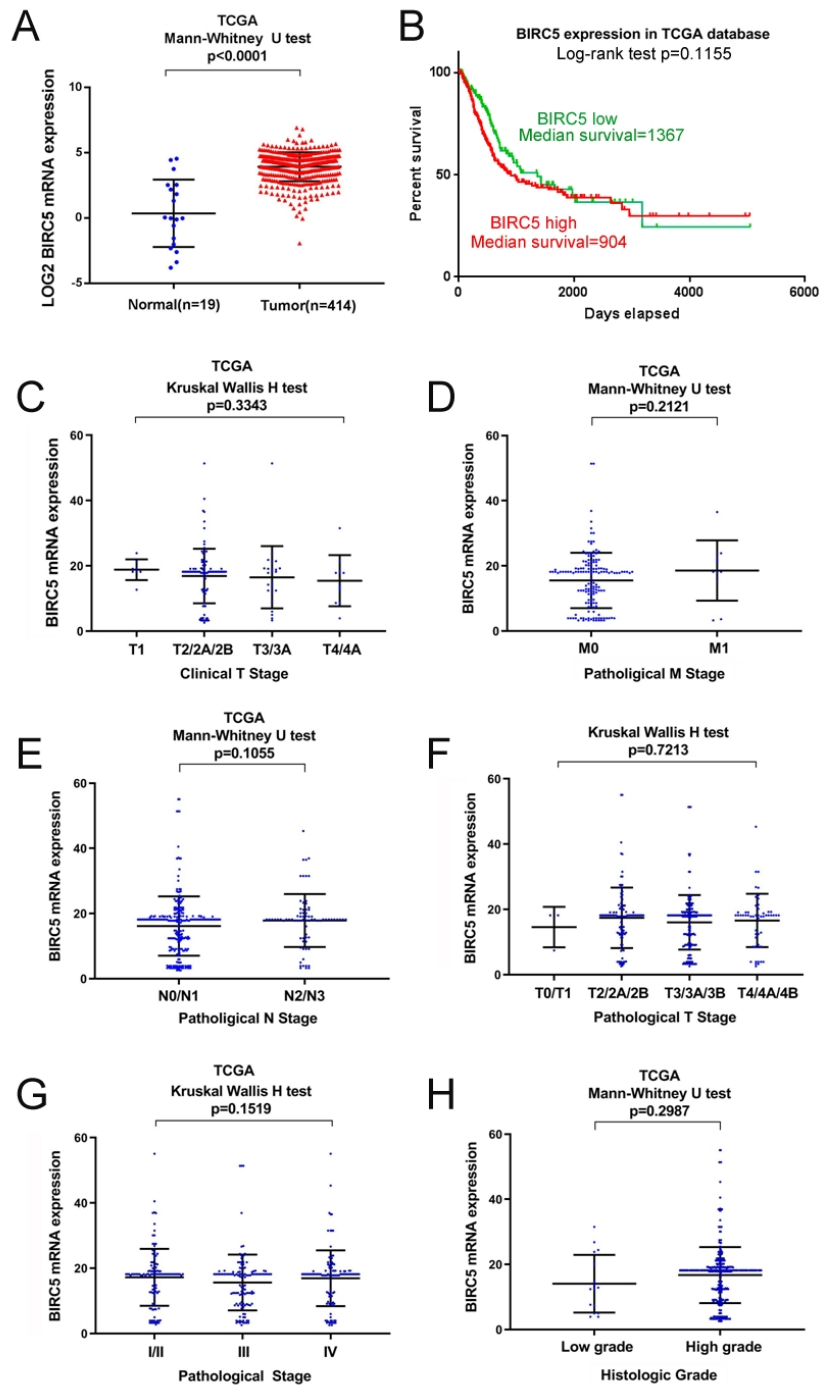
Supplementary Figure2



Supplementary Figure2.

A. We also overexpressed AATF in 5637 cell line and silenced AATF in T24 cell line. The efficiency was confirmed by western blot. B. AATF overexpression increased 5637 cell growth rates. AATF silencing reduced T24 cell growth. C. AATF silencing reduced T24 colony formation ability. Overexpression of AATF increased 5637 colony formation ability. D. T24 and 5637 cells were transfected with a survivin promoter firefly luciferase vector together with AATF plasmid or siRNA for 48 h to analyze changes of Survivin promoter activity. Relative luciferase activity was calculated as percentage of untreated controls.

Supplementary Figure3



Supplementary Figure3.

A. TCGA data showed that Survivin/BIRC5 expression was significantly higher in BC tissues compared with normal tissues. B. The relationship between Survivin expression and patients' survival according to TCGA. C. The relationship between Survivin expression and clinical T stage according to TCGA. D. The relationship

between Survivin expression and pathological M stage according to TCGA. E. The relationship between Survivin expression and pathological N stage according to TCGA. F. The relationship between Survivin expression and pathological T stage according to TCGA. G. The relationship between Survivin expression and pathological TNM stage according to TCGA. H. The relationship between Survivin expression and histologic grade according to TCGA