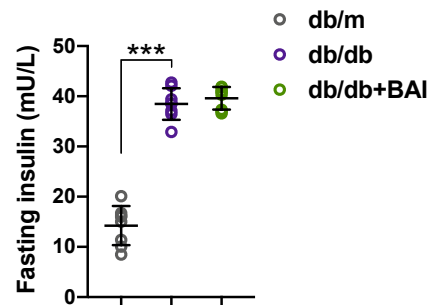
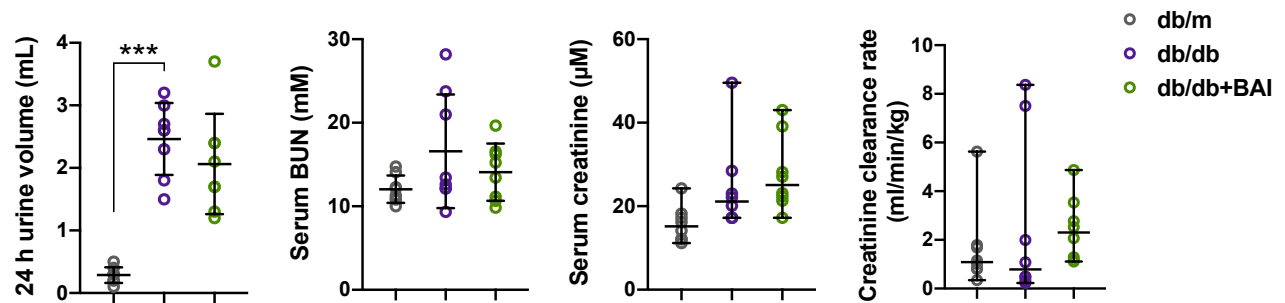


Supplementary Figures

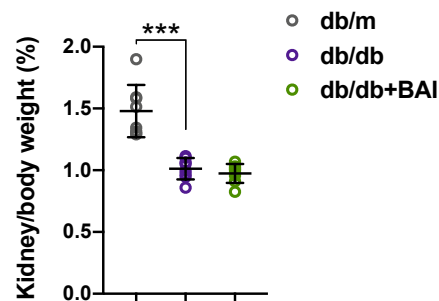
Title: Baicalin alleviates oxidative stress and inflammation in diabetic nephropathy via Nrf2 and MAPK signaling pathway



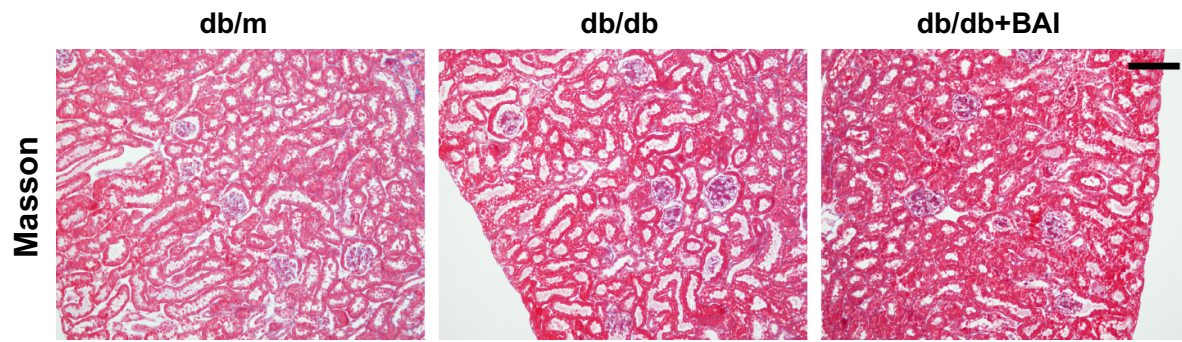
Supplementary Fig. 1. Fasting insulin level of different groups. All data are presented as means \pm SD. *** $p < 0.001$.



Supplementary Fig. 2. 24 h urine volume, serum urea nitrogen (BUN), serum creatinine and creatinine clearance rate (Ccr) of different groups. 24 h urine volume and serum BUN are presented as means \pm SD, serum creatinine and Ccr are presented as median (min - max). *** $p < 0.001$.



Supplementary Fig. 3. Kidney/body weight ratio of different groups. All data are presented as means \pm SD. *** $p < 0.001$.



Supplementary Fig. 4. Representative kidney Massoon staining of different groups. Scale bar, 100 μm . (n=8)