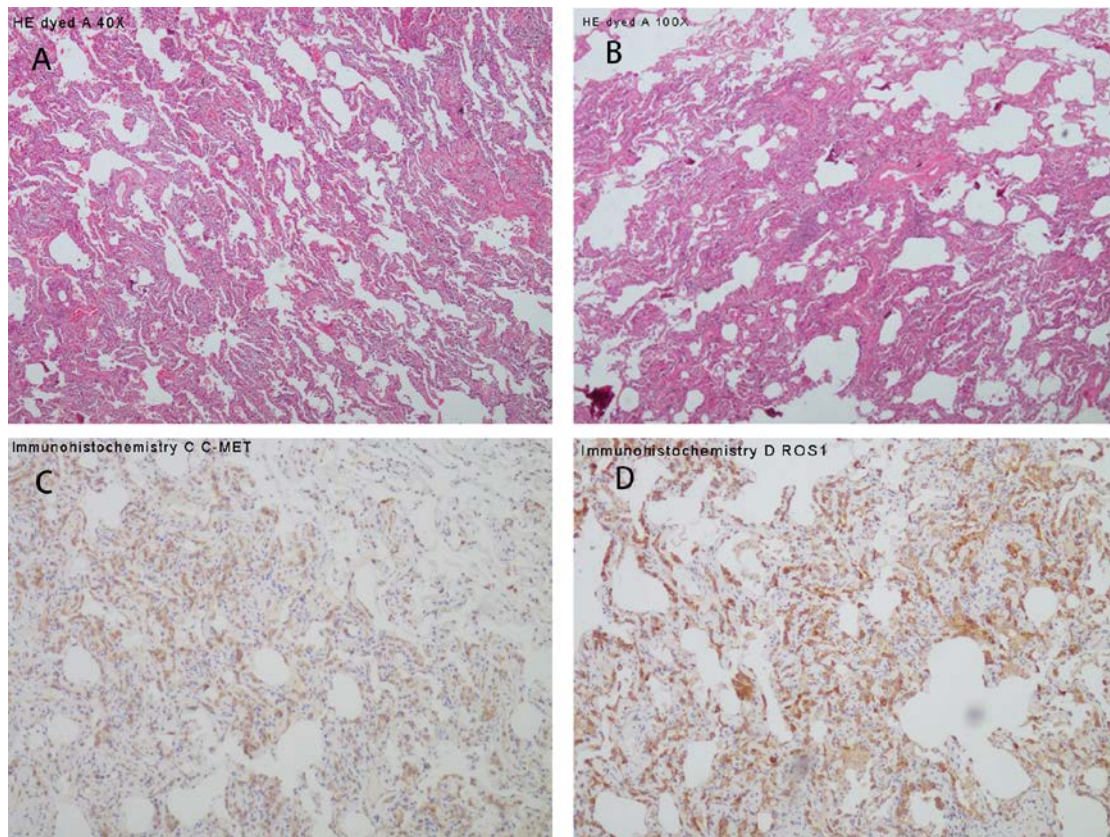
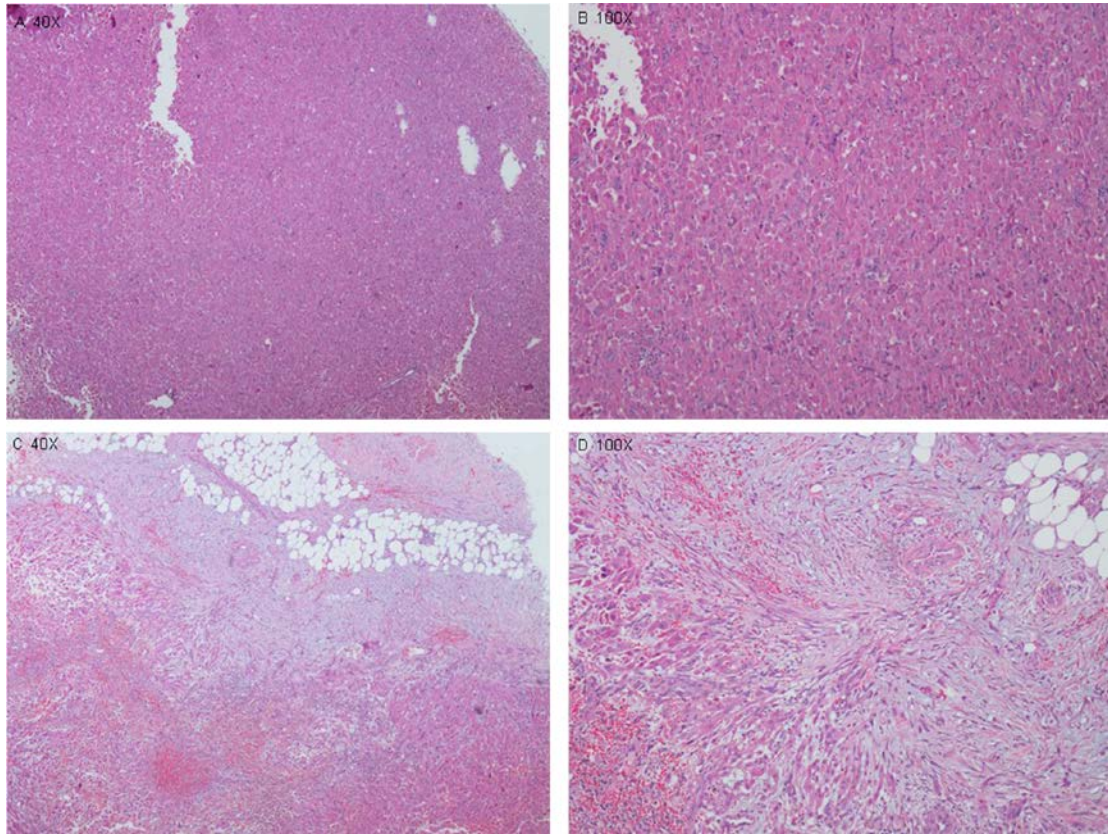


Supplementary Files



Supplementary Figure 1 Postoperative pathology (HE dyed) of the pulmonary mass indicated microinvasive lung adenocarcinoma. Immunohistochemistry showed C-MET (+), ROS1 (+). HE dyed.

(A) 40X; (B) 100X Immunohistochemistry; (C) C-MET; (D) ROS1.



Supplementary Figure 2 Histological specimen (HE dyed) showed the perirenal tumor was composed of cells with eosinophilic cytoplasm with moderate epithelioid appearance. (A) 40X; (B) 100X; (C) 40X; (D)100X.