

Supplementary Table 1 Association between TyG index and progression of NAFLD in ordered logistic regression models

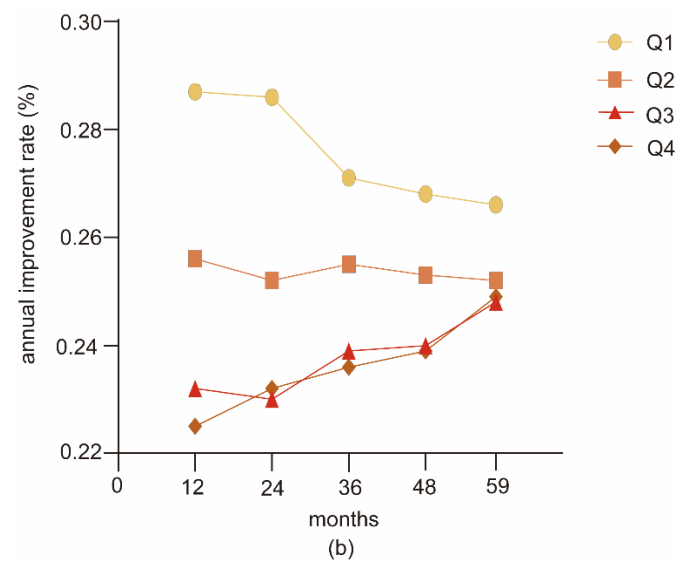
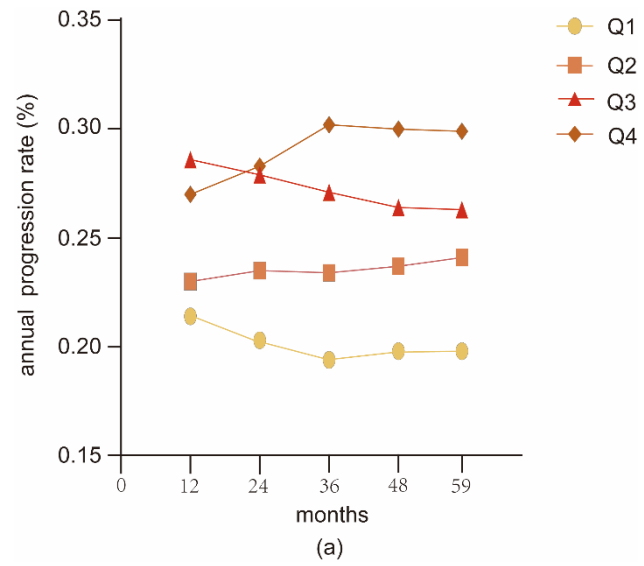
	Unadjusted		Model 1		Model 2		Model 3	
	OR	<i>P</i>	OR	<i>P</i>	OR	<i>P</i>	OR	<i>P</i>
Quartile 1	1(Ref)		1(Ref)		1(Ref)		1(Ref)	
Quartile 2	1.151 (1.008,1.315)	0.038	1.138(0.996,1.301)	0.057	1.155 (1.002,1.332)	0.047	1.151 (0.998,1.328)	0.053
Quartile 3	1.268 (1.112,1.446)	<0.001	1.272 (1.115,1.450)	<0.001	1.347 (1.171,1.548)	<0.001	1.345 (1.169,1.547)	<0.001
Quartile 4	1.472 (1.294,1.675)	<0.001	1.458(1.282,1.659)	<0.001	1.522 (1.327,1.745)	<0.001	1.519 (1.325,1.743)	<0.001

Model 1: Adjusted for sex, age; Model 2: Adjusted for sex, age, SBP, DBP, BMI, HDL, LDL, FPG, TG, ALT, Scr; Model 3: Adjusted for sex, age, SBP, DBP, BMI, HDL, LDL, FPG, TG, ALT, Scr, diet, smoking, alcohol consumption and physical activity.

Supplementary Table 2 Association between TyG index and improvement of NAFLD in ordered logistic regression models

	Unadjusted		Model 1		Model 2		Model 3	
	OR	<i>P</i>	OR	<i>P</i>	OR	<i>P</i>	OR	<i>P</i>
Quartile 1	1(Ref)		1(Ref)		1(Ref)		1(Ref)	
Quartile 2	0.874 (0.787,0.970)	0.012	0.879(0.791,0.976)	0.016	0.874 (0.782,0.978)	0.018	0.879 (0.786,0.983)	0.024
Quartile 3	0.817 (0.735,0.907)	<0.001	0.820 (0.738,0.911)	<0.001	0.808 (0.722,0.904)	<0.001	0.814 (0.728,0.911)	<0.001
Quartile 4	0.797 (0.718,0.885)	<0.001	0.802(0.722,0.890)	<0.001	0.787 (0.704,0.880)	<0.001	0.790 (0.707,0.884)	<0.001

Model 1: Adjusted for sex, age; Model 2: Adjusted for sex, age, SBP, DBP, BMI, HDL, LDL, FPG, TG, ALT, Scr; Model 3: Adjusted for sex, age, SBP, DBP, BMI, HDL, LDL, FPG, TG, ALT, Scr, diet, smoking, alcohol consumption and physical activity.



Supplementary Figure 1 Trends of the outcomes of NAFLD against time. **(a)**. The annual progression rate over time. **(b)**. The annual improvement rate over time.