

Suppl Table A

Clinical and biochemical characteristics of the study cohort according to sex

	Male n = 42	Female n = 38	p value
Age (years)	79 [75, 85]	79 [72, 85]	0.7104
Type 2 diabetes (n, %)	11, 26.2	11, 29.0	0.7827
Hypertension (n, %)	22, 52.4	24, 63.1	0.3302
Heart failure (n, %)	4, 9.5	5, 13.1	0.6075
Atrial fibrillation (n, %)	10, 23.8	6, 15.8	0.3705
ASCVD (n; %)	13, 31.0	6, 15.8	0.1115
ACEi/ARB (n; %)	22, 52.4	18, 47.4	0.6543
Statins (n, %)	13, 31.0	8, 21.0	0.3149
Antithrombotic therapy (n, %)	23, 54.7	18, 47.4	0.5088
eGFR <60 ml/min/1.73m ² (n, %)	21, 50.0	16, 42.1	0.4794
Deceased (n, %)	10, 23.8	4, 10.5	0.1184
Discharged (n, %)	32, 76.2	34, 89.5	0.1184
Random plasma glucose (mg/dl)	138 [114, 179]	125 [104, 147]	0.1012
Serum creatinine (mg/dl)	1.2 [1.0, 1.4]	0.9 [0.7, 1.2]	0.0048
eGFR (ml/min/1.73 m ²)	60.7 ± 20.2	59.6 ± 17.4	0.8004
Serum Na ²⁺ (mEq/l)	136 [134, 140]	138 [136, 140]	0.2155
Serum K ⁺ (mEq/l)	4.1 ± 0.57	4.05 ± 0.47	0.6072
BUN (mmol/l)	23 [18, 34]	23 [18, 29]	0.7567
CRP (mg/dl)	7.7 [2.6, 12.8]	5.2 [2.2, 11.3]	0.4598
IL-6 (pg/ml)	13.6 [7.0, 29.6]	22.3 [6.1, 30.0]	0.6021
Ferritin (µg/l)	702 [357, 1297]	326 [201, 665]	0.0027
Fibrinogen (mg/dl)	515 ± 157	491 ± 127	0.4485
D-dimer (mg/l)	0.5 [0.3, 1.0]	0.4 [0.3, 0.6]	0.2090
HS Troponine (ng/l)	19 [10, 35]	20 [10, 40]	0.8820
BNP (pg/ml)	85 [30, 217]	55 [40, 153]	0.0231
pH	7.47 [7.43, 7.49]	7.46 [7.44, 7.50]	0.6511
PaO ₂ (mmHg)	60 [53, 74]	61 [55, 71]	0.9124
PaCO ₂ (mmHg)	33 [31, 36]	35 [31, 38]	0.1643
HCO ₃ ⁻ (mmol/l)	24.0 ± 3.3	26.3 ± 2.6	0.0630
PaO ₂ /FiO ₂ (P/F) (mmHg)	276 [239, 323]	286 [234, 316]	0.7718

Wilcoxon/Kruskal-Wallis Tests (Rank Sums). Statistically significant values are in bold.

Suppl Table B Clinical and biochemical characteristics of the study cohort according to the presence of type 2 diabetes.

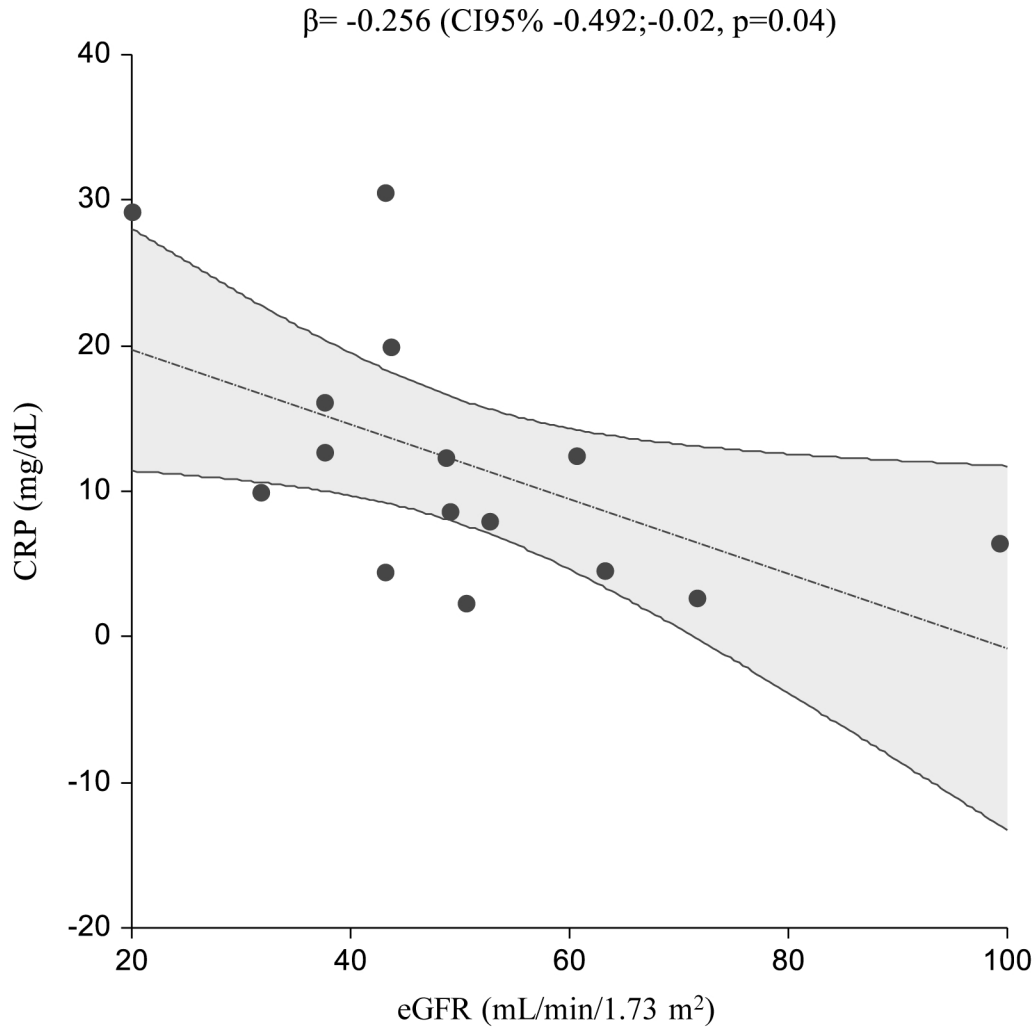
	Type 2 diabetes n = 22	Normal glucose metabolism n = 58	p value
Age (years)	79 [74, 85]	79 [73, 85]	0.6780
Male (n, %)	11, 50.0	31, 53.5	0.7827
Hypertension (n, %)	18; 82.0	28, 48.3	0.0067
Heart failure (n, %)	5, 22.7	4, 6.9	0.0454
Atrial fibrillation (n, %)	4, 18.2	12, 20.7	0.8023
ASCVD (n, %)	6, 27.2	13, 22.4	0.6484
ACEi/ARB (n, %)	15, 68.2	25, 43.1	0.0452
Statins (n, %)	9, 40.0	12, 20.1	0.0665
Antithrombotic therapy (n, %)	12, 54.5	29, 50.0	0.7165
eGFR <60 ml/min/1.73m ² (n, %)	9, 41.0	28, 48.3	0.5551
Deceased (n, %)	4, 18.2	10, 17.3	0.9213
Discharged (n, %)	18, 81.8	48, 82.7	0.9213
Random plasma glucose (mg/dl)	174 [128, 234]	124 [111, 140]	0.0022
Fasting plasma glucose (mg/dl)	179 [120, 240]	108 [91, 134]	0.0005
HbA1c (mmol/l)	56 [51, 69]	---	---
Serum creatinine (mg/dl)	1.1 [0.8, 1.2]	1.0 [0.8, 1.4]	0.7100
eGFR (ml/min/1.73m ²)	58.0 ± 18.7	61.0 ± 19.0	0.5080
Serum Na ²⁺ (mEq/l)	136 [134, 139]	138 [136, 141]	0.0206
Serum K ⁺ (mEq/l)	4.3 ± 0.4	4.0 ± 0.5	0.0284
BUN (mmol/l)	23 [17, 33]	23 [21, 31]	0.4608
CRP (mg/dl)	9.6 [3.0, 13.4]	6.2 [2.3, 12.3]	0.2796
IL-6 (pg/ml)	19.0 [7.0, 29.2]	19.6 [6.8, 30.0]	0.7144
Ferritin (µg/l)	357 [202, 648]	561 [281, 927]	0.1616
Fibrinogen (mg/dl)	551 ± 145	485 ± 140	0.0687
D-dimer (mg/l)	0.5 [0.3, 1.4]	0.4 [0.2, 0.8]	0.5005
HS Troponine (ng/l)	20 [13, 42]	20 [9, 30]	0.3700
BNP (pg/ml)	63 [46, 188]	60 [31, 208]	0.6758
pH	7.45 [7.42, 7.47]	7.47 [7.45, 7.50]	0.0453
PaO ₂ (mmHg)	64 [56, 76]	61 [51, 70]	0.1657
PaCO ₂ (mmHg)	34 [31, 37]	33 [31, 38]	0.6581
HCO ₃ ⁻ (mmol/l)	24.5 ± 3.0	25.3 ± 3.3	0.3591
PaO ₂ /FiO ₂ (P/F) (mmHg)	276 [247, 340]	281 [33, 313]	0.6891

Wilcoxon/Kruskal-Wallis Tests (Rank Sums). Statistically significant values are in bold.

Suppl Table C Clinical and biochemical characteristics according to outcome in patients with type 2 diabetes.

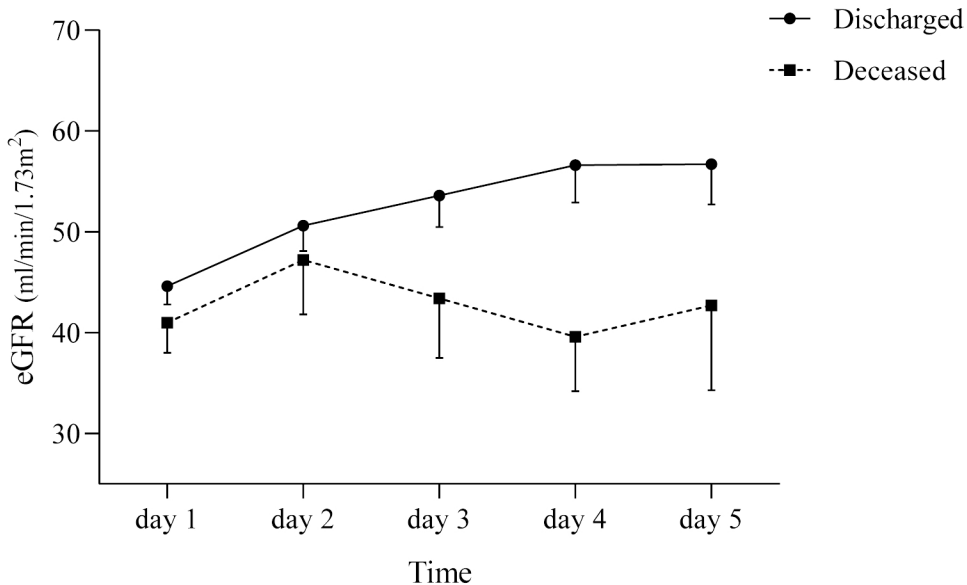
	Discharged n = 18	Deceased n = 4	p value
Age (years)	78 [73, 84]	85 [79, 90]	0.1474
Male (n, %)	8, 44.4	3, 75.0	0.2689
Hypertension (n, %)	15, 83.3	3, 75.0	0.6959
Heart failure (n, %)	4, 22.2	1, 25.0	0.9046
Atrial fibrillation (n, %)	3, 16.7	1, 25.0	0.6959
ASCVD (n, %)	5, 27.8	1, 25.0	0.9102
ACEi/ARB (n; %)	13, 72.2	2, 50.0	0.3881
Statins (n, %)	6, 33.3	3, 75.0	0.1252
Antithrombotic therapy (n, %)	10, 55.5	2, 50.0	0.8400
eGFR <60 ml/min/1.73m ² (n, %)	6, 33.3	3, 75.0	0.1252
Random plasma glucose (mg/dl)	170 [119, 195]	221 [170, 265]	0.2021
Fasting plasma glucose (mg/dl)	175 [113, 238]	229 [198, 260]	0.1315
HbA1c (mmol/l)	54 [51, 66]	57 [52, 63]	0.1388
Serum creatinine (mg/dl)	1.0 [0.8, 1.2]	1.5 [1.1, 2.5]	0.0368
eGFR (ml/min/1.73m ²)	62.3 ± 16.1	38.2 ± 18.2	0.0154
Serum Na ²⁺ (mEq/l)	136 [134, 139]	133 [129, 138]	0.3909
Serum K ⁺ (mEq/l)	4.3 ± 0.4	4.2 ± 0.2	0.6016
BUN (mmol/l)	22 [19, 27]	35 [25, 64]	0.0597
CRP (mg/dl)	5.5 [2.2, 13.2]	13.0 [5.8, 26.0]	0.2113
IL-6 (pg/ml)	21.4 [11.0, 29.0]	11.0 [4.3, 33.0]	0.7115
Ferritin (µg/l)	311 [190, 592]	649 [341, 1599]	0.1706
Fibrinogen (mg/dl)	533 ± 148	631 ± 115	0.2288
D-dimer (mg/l)	0.5 [0.3, 2.7]	0.6 [0.3, 1.3]	0.9479
HS Troponine (ng/l)	17 [10, 36]	38 [21, 57]	0.1837
BNP (pg/ml)	63 [40, 189]	185 [56, 192]	0.4491
pH	7.45 [7.42, 7.46]	7.49 [7.42, 7.49]	0.3119
PaO ₂ (mmHg)	70 [59, 79]	53 [51, 58]	0.0207
PaCO ₂ (mmHg)	34 [32, 37]	27 [23, 40]	0.2663
HCO ₃ ⁻ (mmol/l)	25.0 ± 2.8	22.5 ± 4.0	0.2124
PaO ₂ /FiO ₂ (P/F) (mmHg)	283 [251, 352]	252 [243, 276]	0.0442

Wilcoxon/Kruskal-Wallis Tests (Rank Sums). Statistically significant values are in bold.

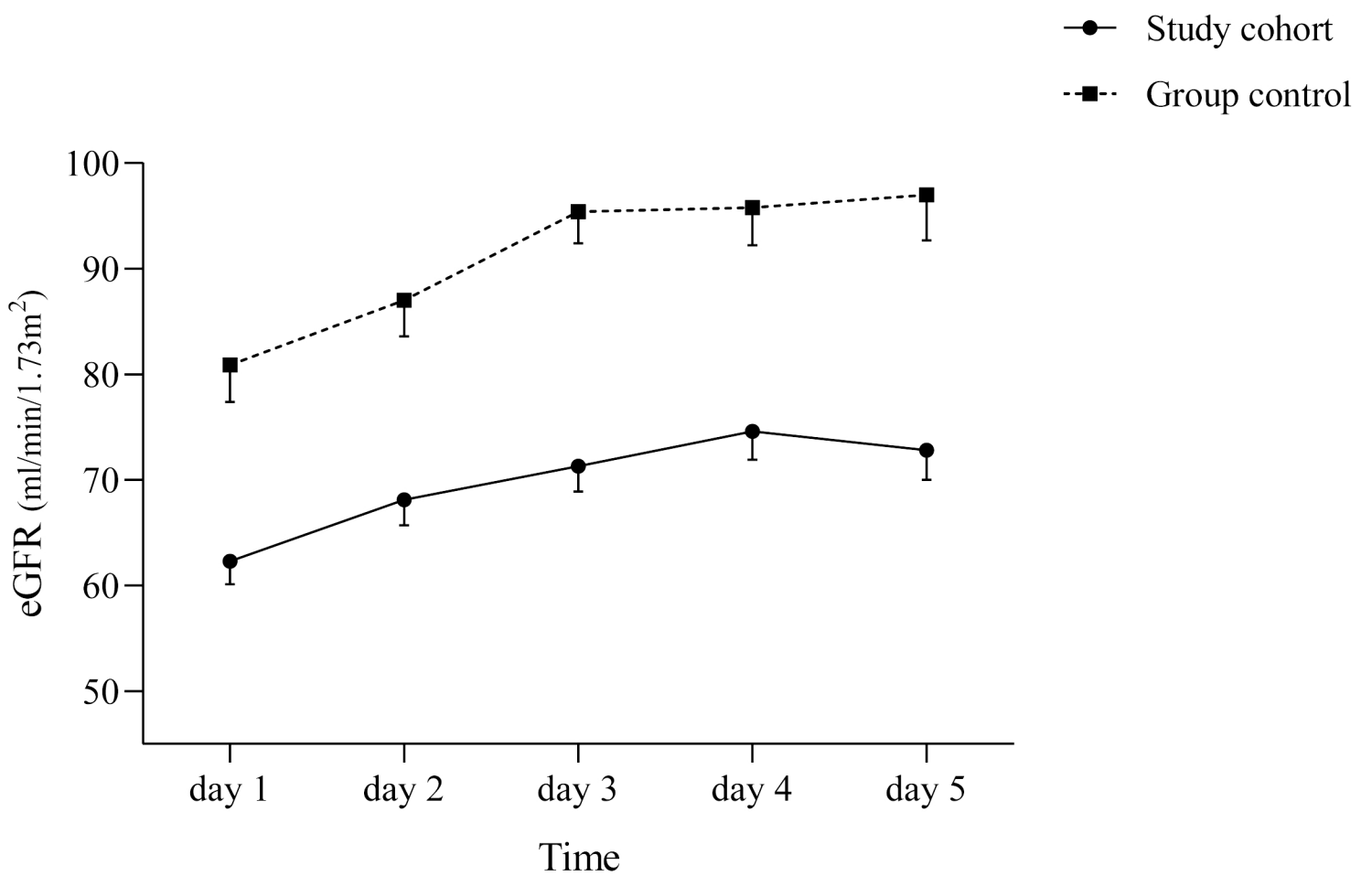
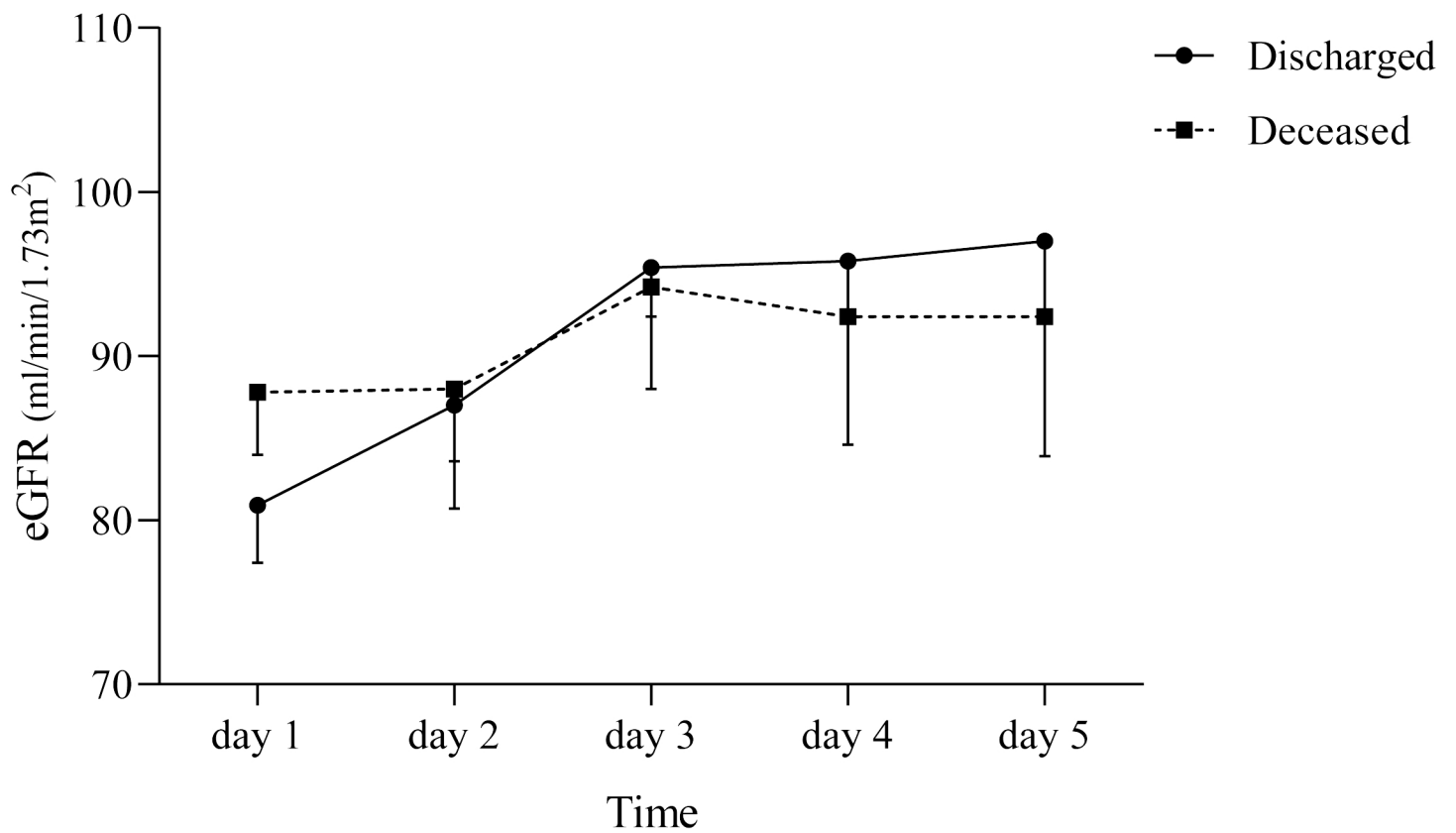


Suppl Figure A

Linear regression between eGFR at admission (independent variable) and CRP levels at admission (dependent variable) in deceased patients with age ≥ 65 years.



Suppl Figure B Glomerular function according to clinical outcome (circles= discharged; squares=deceased) in the subset of elderly patients with CKD III at baseline. Data are shown as mean±SE.



Suppl Figure C Upper panel: Glomerular function according to clinical outcome (circles= discharged; squares=deceased) in the whole control group. Lower panel: Glomerular function in discharged elderly (circles) and young (squares) patients. Data are shown as mean±SE