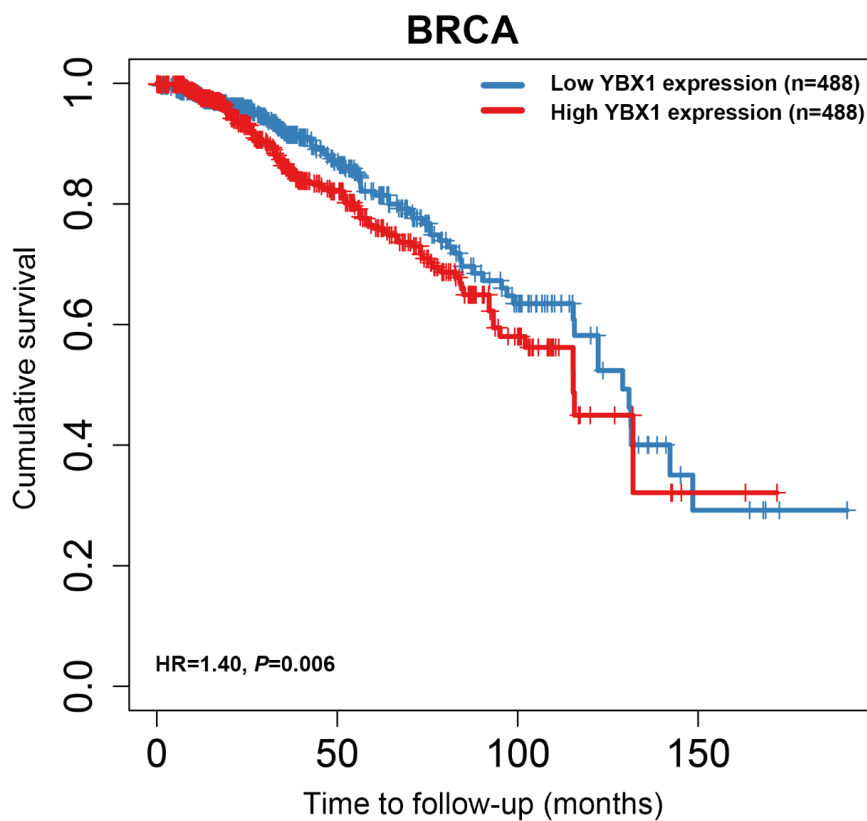


1 **Supplementary Figure 1.** Survival curves comparing the high and low
2 expression of *YBX1* in the BRCA cohort after adjusting potential
3 confounding factors including patient age, gender, race and tumor stage by
4 TIMER database.



5

6 **Abbreviations:** BRCA, breast cancer; HR, hazard ratio; TIMER, the
7 Tumor Immune Estimation Resource database; *YBX1*, Y-box binding
8 protein 1.

9