

Figure S1

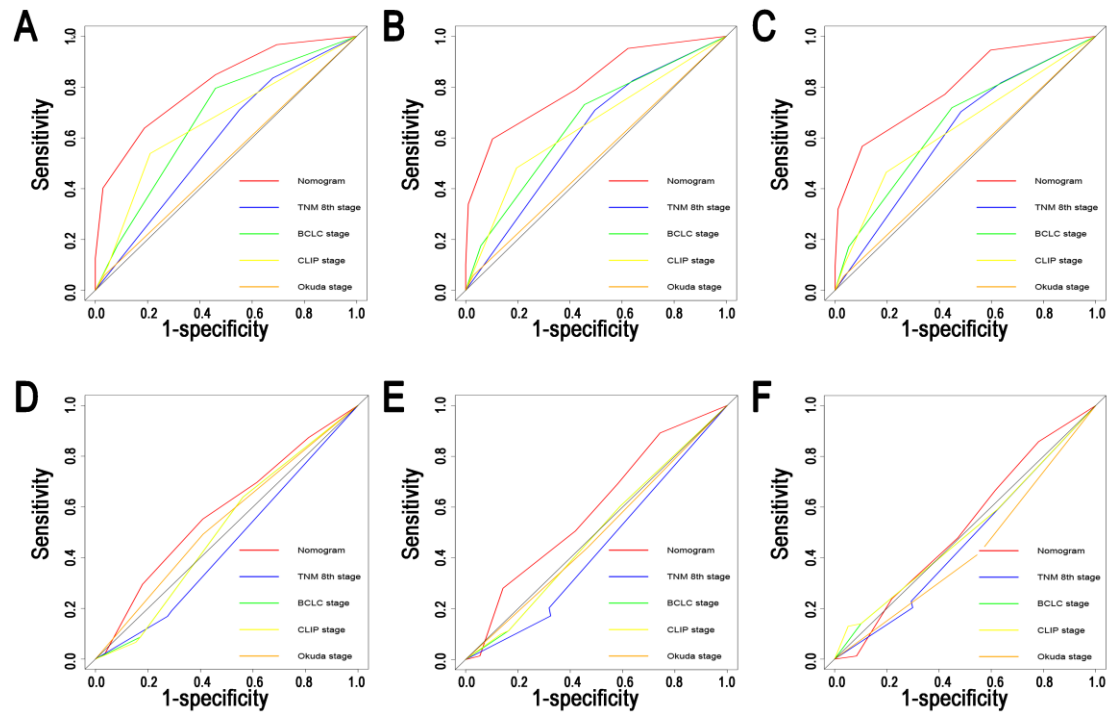


Figure S1. Comparisons of ROC curves of the nomogram, TNM staging system, BCLC staging score, CLIP score, and Okuda staging system for 1-, 2- and 3-year PFS in the primary (A, B, C) and validation (D, E, F) cohorts. ROC, receiver operating characteristic; TNM, tumor-node-metastasis; BCLC, Barcelona Clinic Liver Cancer; CLIP, Cancer of the Liver Italian Program; PFS, progression-free survival