

## Supplementary data

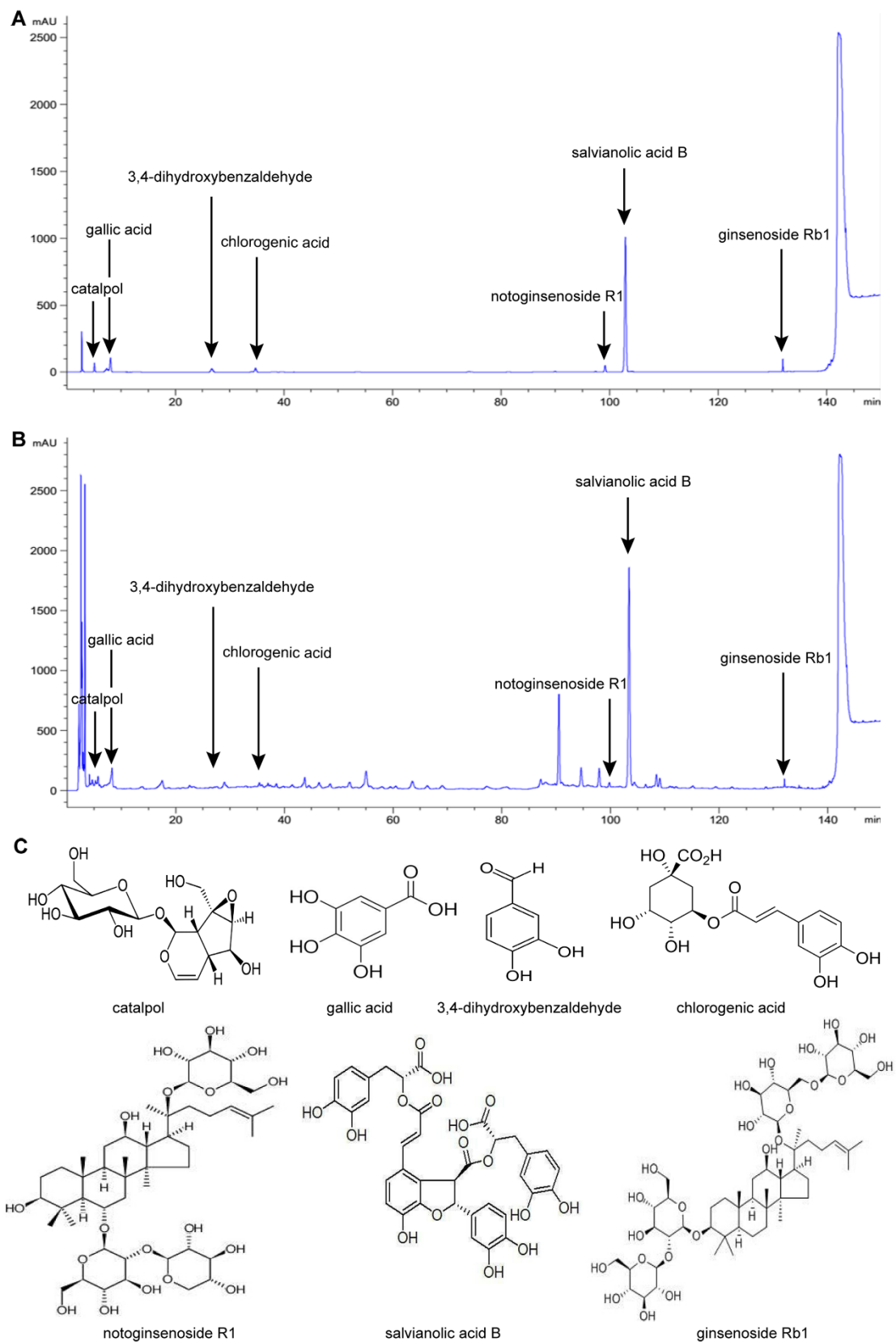
Table S1

Primer sequences for RT-qPCR analyses.

Gene name		Primer sequences (5' to 3')
Bcl-2	Forward	5'- GGGCTACGAGTGGGATACTGGAG-3'
	Reverse	5'- CGGGCGTTCGGTTGCTCT-3'
TRAF2	Forward	5'- CCATGTCAGAACGTGCAGTAA-3'
	Reverse	5'- CTTGGGACTCCAGGAACGA-3'
Mcl-1	Forward	5'- CCAAGAAAGCTGCATCGAA-3'
	Reverse	5'- GGAAGAACTCCACAAACCCA-3'
APAF1	Forward	5'- ACGTGGAGGTGATCGTGAAATG-3'
	Reverse	5'- TGCTGTGATGACCTGTGTGGA-3'
p53	Forward	5'- TCCAGTTCATTGGGACTTATCCTTG-3'
	Reverse	5'- GCTCATATCCGACTGTGAATCCTC-3'
p73	Forward	5'- TGTCGCCAACCTTATCAAGCTC-3'
	Reverse	5'- GCATGGCCAGCTCTGTTCTC-3'
TNFR1	Forward	5'- CCTCAGGAACGGGACTCGAA-3'
	Reverse	5'- ATGTACACCAAGTCGGTAGCACCA-3'
P14 <sup>ARF</sup>	Forward	5'- CCCGAACACTTTCGGTCGTA-3'
	Reverse	5'- CAGGAGAGCTGCCACTTTGA-3'
$\beta$ -actin	Forward	5'- CCTAAGGCCAACCGTGAAA-3'
	Reverse	5'- CAGAGGCATACAGGGACAACAC-3'

**Table S1** Primer sequences for RT-qPCR analyses

**Abbreviations:** RT-qPCR, quantitative real-time PCR; Bcl-2, B-cell lymphoma 2; TRAF2, TNF receptor associated factor 2; Mcl-1, myeloid cell leukemia 1; APAF1, apoptotic peptidase activating factor 1; p53, tumor protein 53; p73, tumor protein 73, the homologue of p53; TNFR1, tumor necrosis factor receptor 1; p14<sup>ARF</sup>, alternative reading frame product of the INK4A/ARF locus.

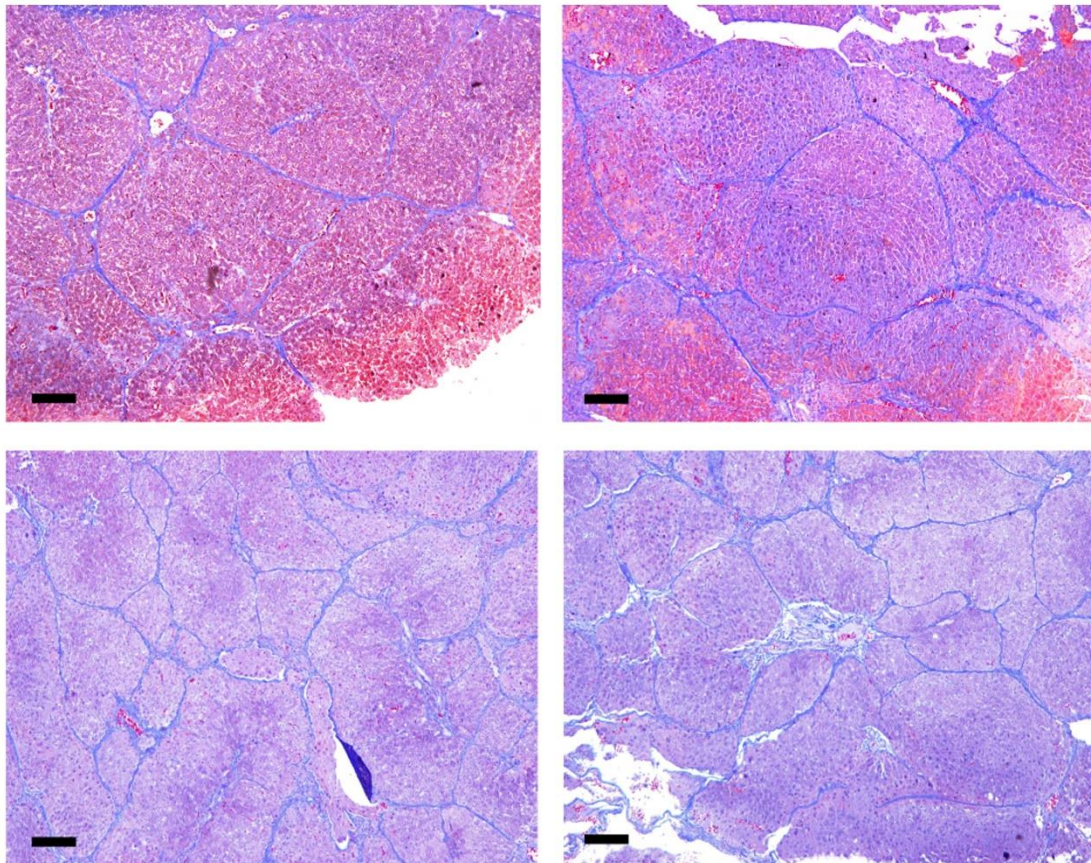


**Figure S1** Results of the HPLC analysis of the JDNW formula.

**Notes:** (A) The HPLC chromatograms of standards at 203nm. (B) The HPLC chromatograms

of the JDNW testing solution at 203nm. (C) The chemical structures of seven compounds in the JDNW formula, including catalpol, gallic acid, 3,4-dihydroxybenzaldehyde, chlorogenic acid, notoginsenoside R1, salvianolic acid B, and ginsenoside Rb1.

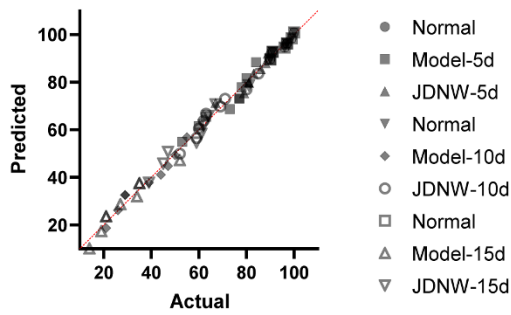
**Abbreviations:** HPLC, high-performance liquid chromatography; JDNW, Jieduan-Niwan.



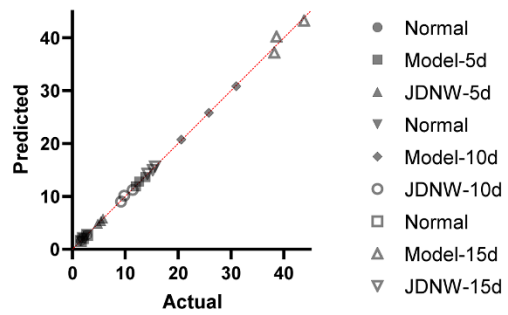
**Figure S2** Masson's trichrome staining of liver biopsy from the treatment group rats

(magnification,  $\times 40$ ). Scale bars in all images are 250  $\mu\text{m}$ .

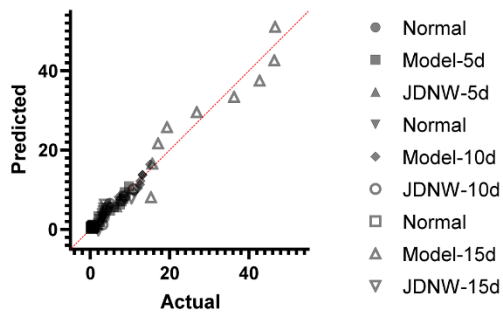
Normal QQ plot of PTA



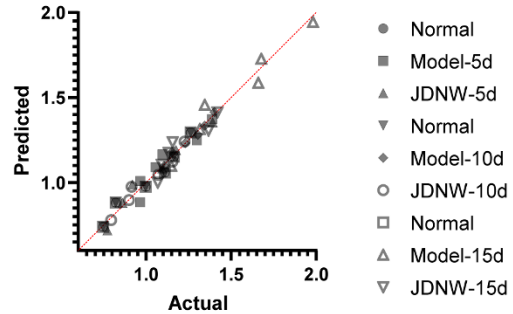
Normal QQ plot of hepatocyte apoptosis index



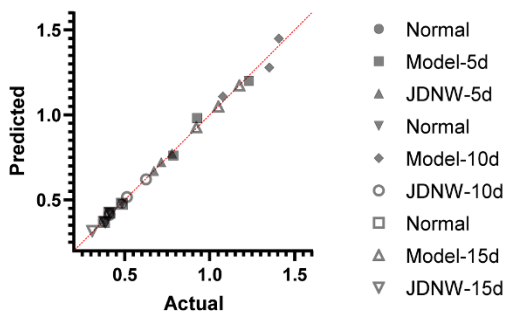
Normal QQ plot of hepatocyte apoptosis rate



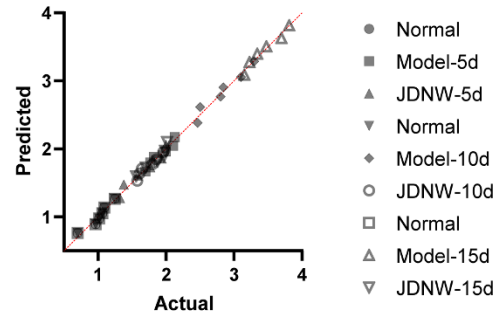
Normal QQ plot of TNFR1



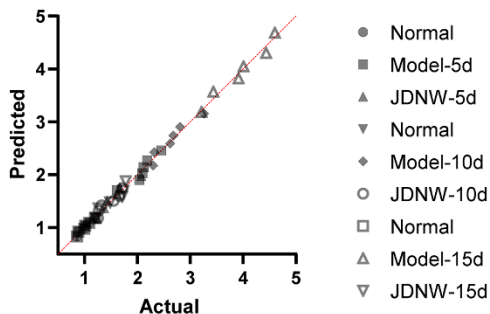
Normal QQ plot of E2F1



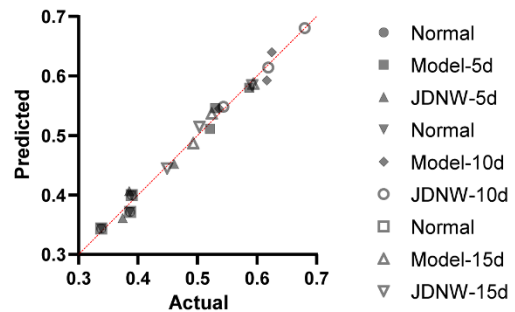
Normal QQ plot of P14arf

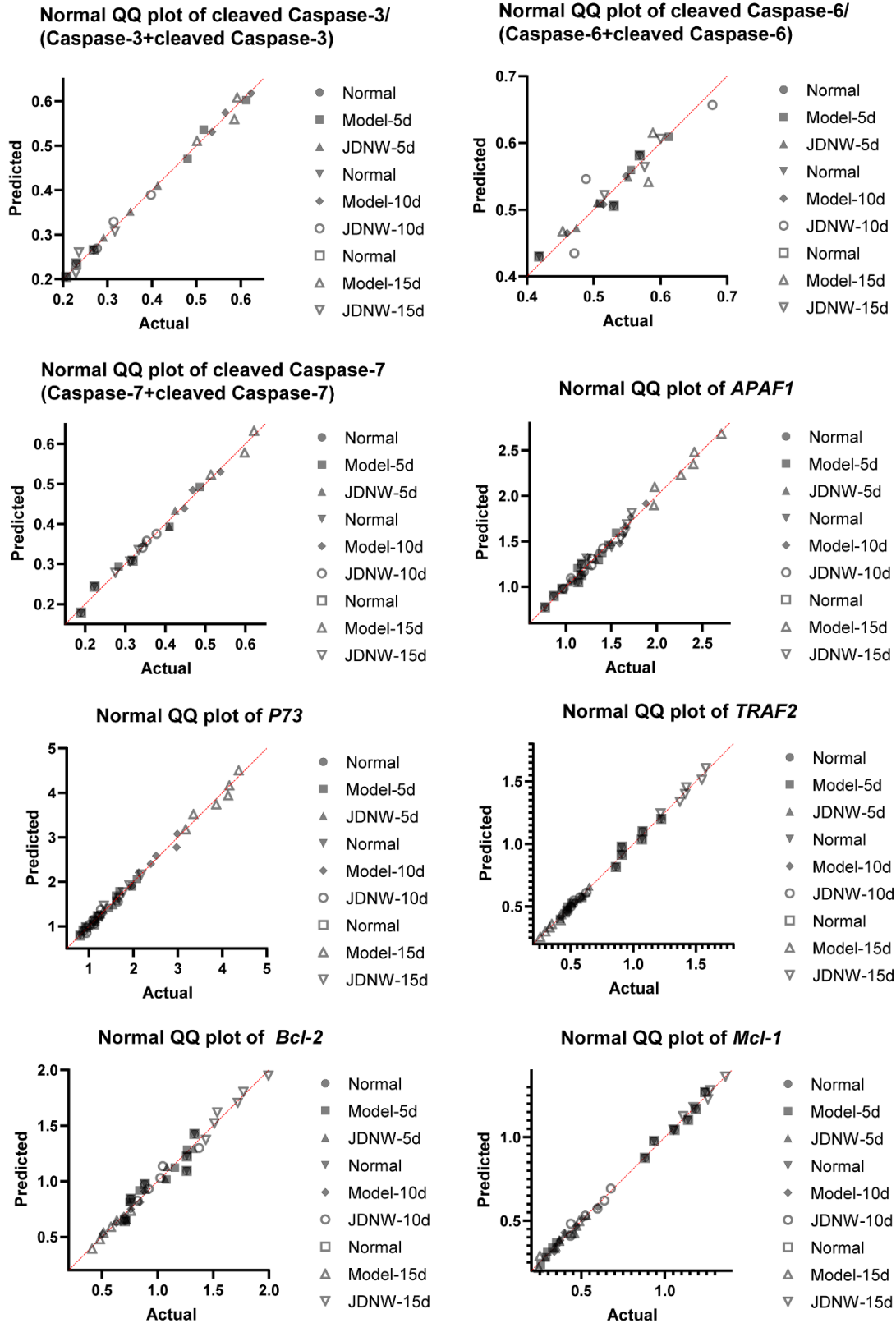


Normal QQ plot of P53



Normal QQ plot of cleaved Caspase-9/  
(Caspase-9+cleaved Caspase-9)



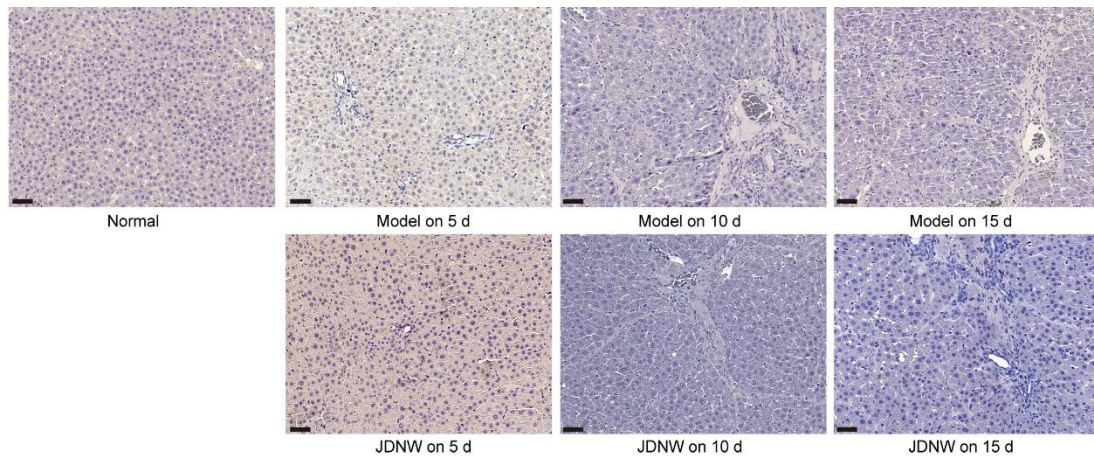


**Figure S3** QQ plots were used to test the normality of experimental data.

**Abbreviations:** PTA, prothrombin time activity; TNFR1, tumor necrosis factor receptor 1;



E2F1, E2F transcription factor 1; p14<sup>ARF</sup>, alternative reading frame product of the INK4A/ARF locus; p53, tumor protein 53; APAF1, apoptotic peptidase activating factor 1; Caspases, cysteinyl aspartate-specific proteinase; p73, tumor protein 73, the homologue of p53; TRAF2, TNF receptor associated factor 2; Bcl-2, B-cell lymphoma 2; Mcl-1, myeloid cell leukemia 1.



**Figure S4** The negative controls of TUNEL assay of hepatic tissues from the different groups

(magnification,  $\times 200$ ). Scale bars in all images are 50  $\mu\text{m}$ .