

Figure 1: *Helicobacter* genus-specific *16S rRNA* gene amplification from gastric biopsies DNA.

Lane 1: 100bp Molecular weight marker; Lane 2 to 8: positive amplification.

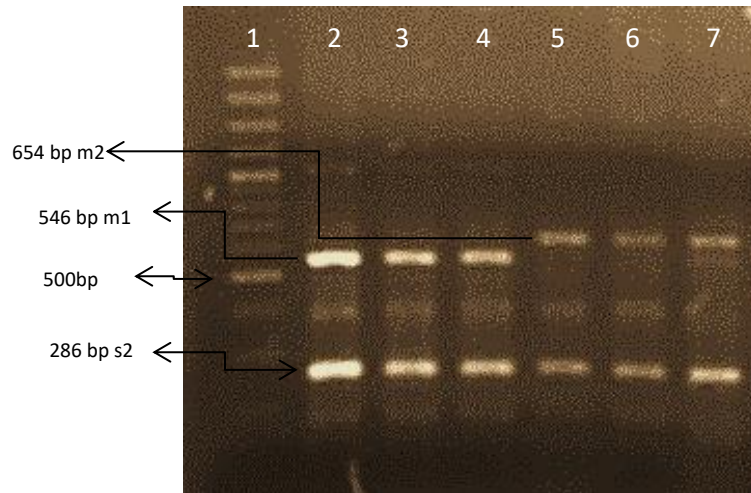


Figure 2: Multiplex PCR for *vacA* gene alleles of *H. pylori*. Lane 1: 100bp Molecular weight marker; Lane 2 to 4: s2m1 alleles of *vacA* gene; Lane 5 to 7: s2m2 alleles of *vacA* gene.

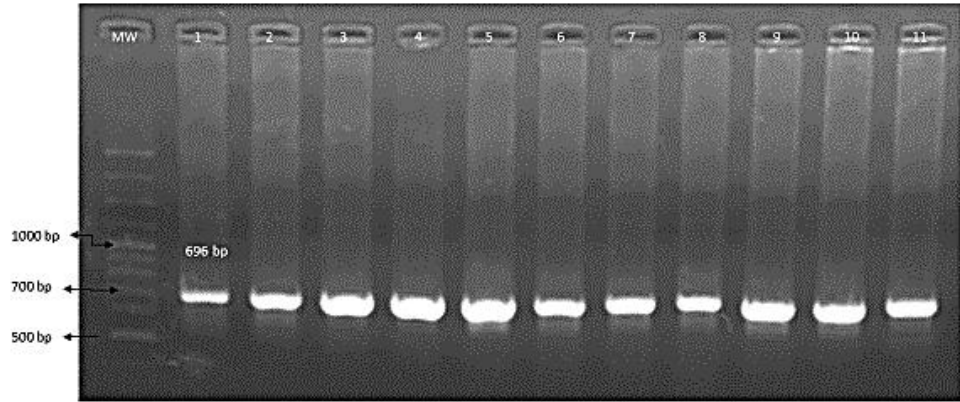


Figure 3. Nested PCR using 1.4 kb and 1.2 kb fragments of domain V of 23S rRNA gene of *H. pylori* as template to amplify the 696 bp internal region of domain V. Lane 1 to 5: amplified product using 1.4 kb fragment as template. Lane 6 to 11: amplified product using 1.2 kb fragments as template. MW; 100 bp Molecular weight marker.

