

Online Data Supplement

Predicting Survival for Patients with Malignant Pleural Effusion: Development of the CONCH Prognostic Model

Xin Zhang, Feng-Shuang Yi*, Huan-Zhong Shi*

Department of Respiratory and Critical Care Medicine, Beijing Institute of Respiratory
Medicine and Beijing Chao-Yang Hospital, Capital Medical University, Beijing 100020,
China

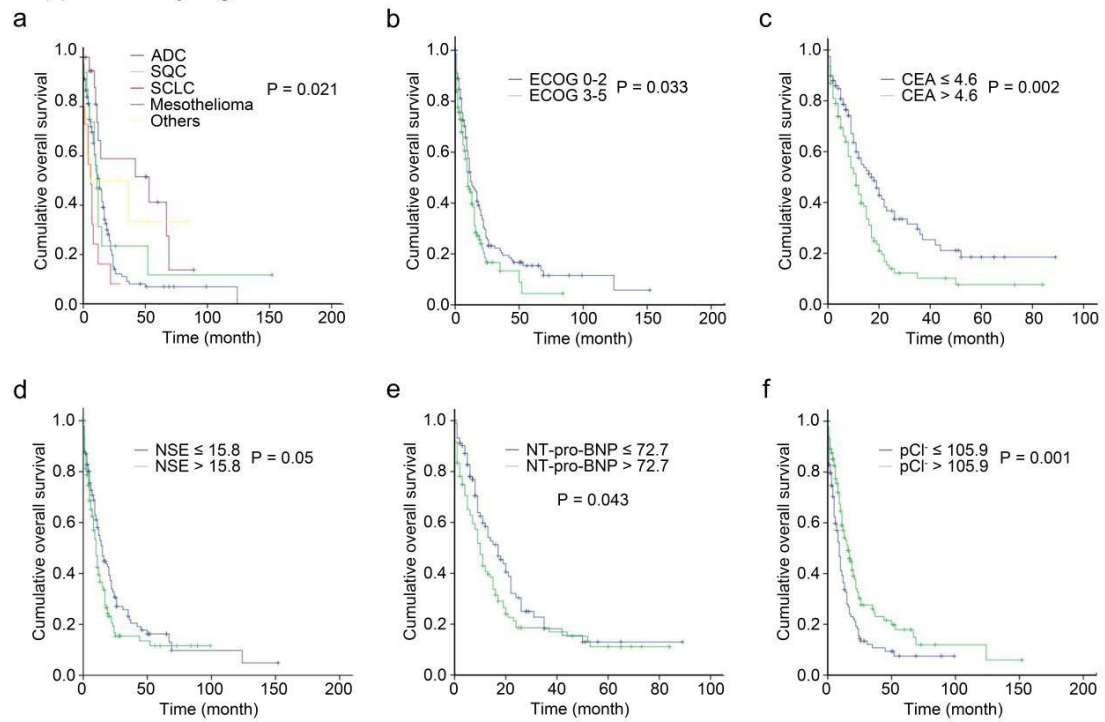
*Corresponding author: Huan-Zhong Shi; Feng-Shuang Yi

Department of Respiratory and Critical Care Medicine, Beijing Institute of
Respiratory Medicine and Beijing Chao-Yang Hospital, Capital Medical University, 8
Gongti Nanlu, Chao-Yang District, Beijing 100020, China

Tel/Fax: (86) 10 85231890

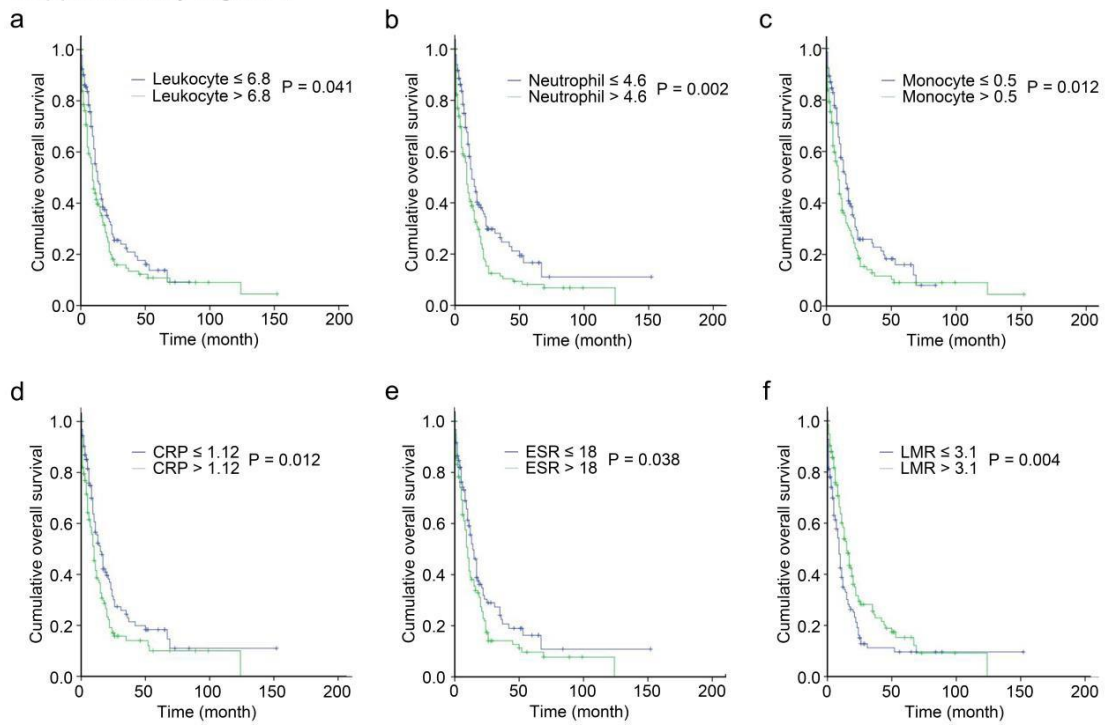
E-mail: shihuanzhong@ccmu.edu.cn ; yifengshuang@ccmu.edu.cn

Supplementary Figure 1



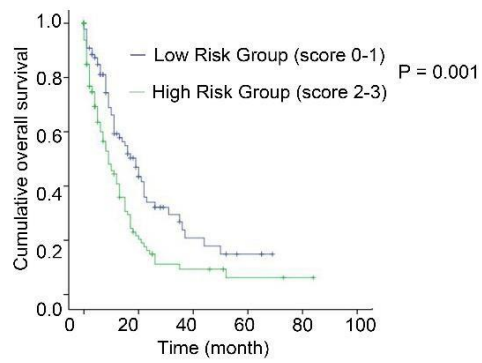
Supplementary Figure 1. Survival curves estimated by the Kaplan–Meier survivor function for histologic types, ECOG PS, and CEA, NSE, NT-pro-BNP, and pleural effusion chloride levels. P values are obtained by univariate Cox logistic regression.

Supplementary Figure 2



Supplementary Figure 2. Survival curves estimated by the Kaplan–Meier survivor function for leukocyte, neutrophil, and monocyte counts, CRP level, and ESR and LMR. P values are obtained by univariate Cox logistic regression.

Supplementary Figure 3



Supplementary Figure 3. Survival curves estimated by Kaplan–Meier survivor function of 2 groups stratified by CEA level, monocyte count and pleural effusion Cl level.

Supplementary Table 1. Prognostic scoring method and multivariate analysis of prognostic factors

Predictors	MVP			Points
	HR	95% CI	P value	
CEA ng/mL				
≤ 4.5	1	-	-	0
> 4.5	1.919	1.310-2.812	0.001	1
Monocyte ×10⁹/L				
≤ 0.5	1	-	-	0
> 0.5	1.539	1.057-2.242	0.024*	1
Pleural effusion Cl⁻ mmol/L				
≤ 105.9	1	-	-	1
> 105.9	0.629	0.436-0.909	0.013*	0

*p<0.05

Supplementary Table 2. Median survival of patients according to—CEA, monocyte count and pleural effusion CI—based strategy.

Variable	n	Median survival (IQR) months	HR	95% CI	P value
Low Risk Group (score 0-1)	92	19 (6-21)	1	-	-
High Risk Group (score 2-3)	112	9 (2-13)	1.791	1.264-2.538	0.001