

3D culture of CTCs from different HCC patients

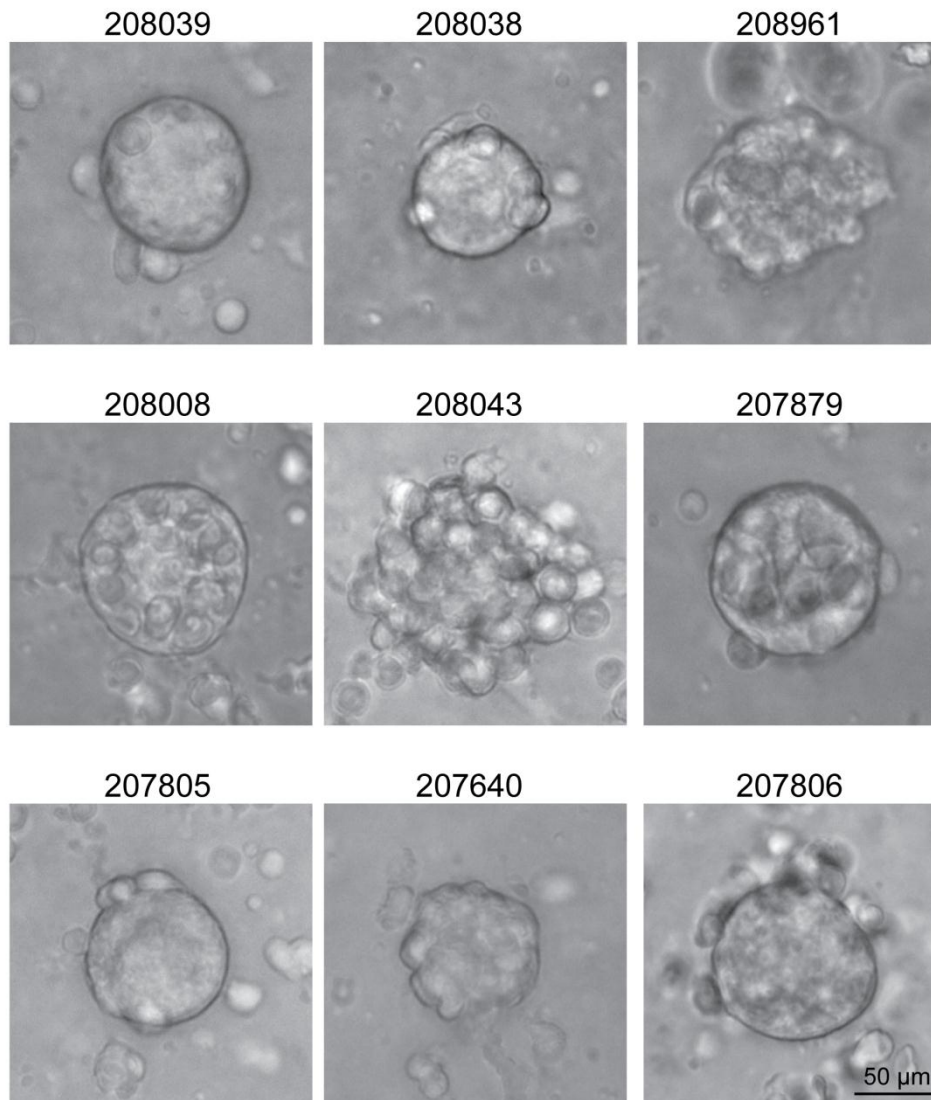


Figure S1. Culture of CTC spheroids from the blood samples of patients with HCC. Typical images of CTC spheroids from the blood samples of patients with HCC cultured for 7 days. CTC, circulating tumor cell; HCC, hepatocellular carcinoma. Scale bar: 50 µm.

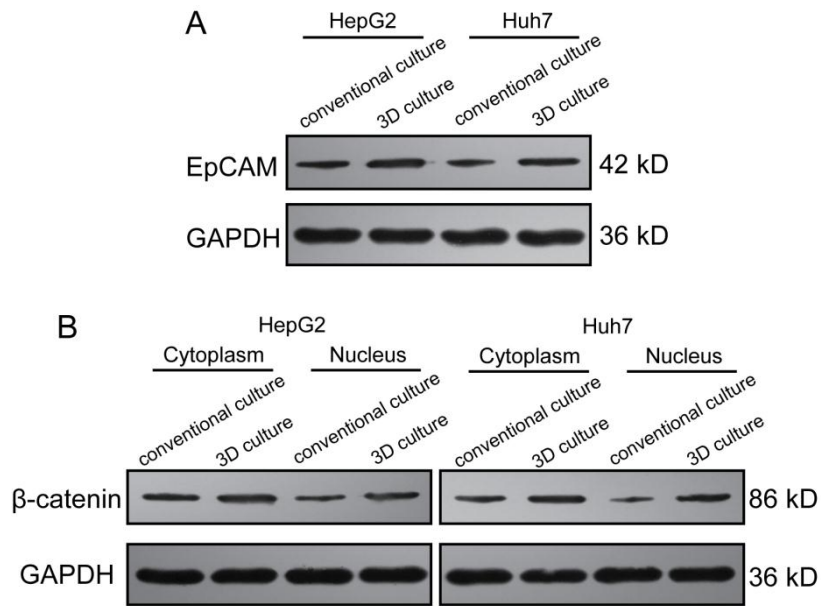


Figure S2. Three dimensional culture significantly enhances CSC-like properties of HCC cells. A: The protein expression of EpCAM in HCC cells which cultured by different culture methods was measured by western blot. B: The protein expression of  $\beta$ -catenin in cytoplasm and nucleus of HCC cells was measured by western blot. GAPDH was used as internal control.