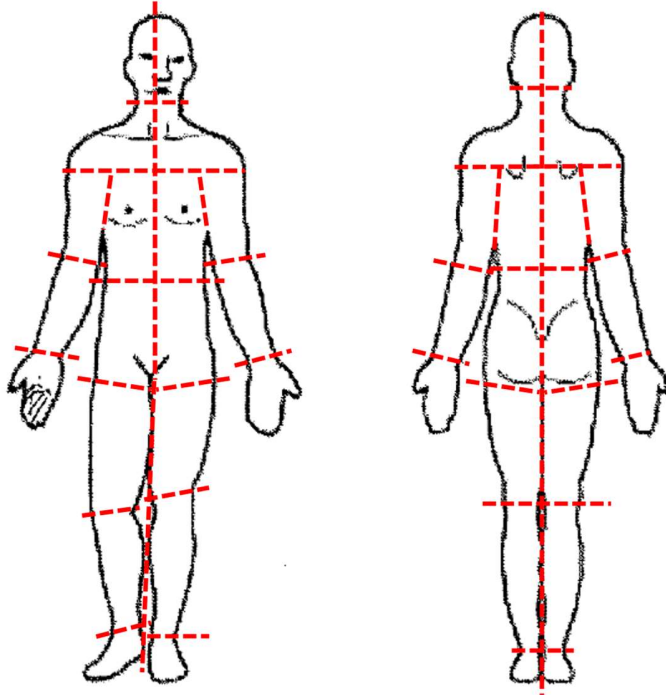


Supplementary Figure 1 Patient's perception of whether their main pain was radiating or not



Notes: Patients' perception of whether their main pain was radiating or not was defined, according to areas on the S-LANSS⁴³ body maps the patients marked as the worst pain. Patients in Study 1333 (patients with CLBP with accompanying lower limb pain below the knee [NeP component]) were considered to perceive their main pain radiating if they marked on ipsilateral adjacent areas of the lower half of the body; those in Study 1354 (patients with chronic cervical pain and accompanying upper limb radiating pain [NeP component]) were considered as such when they marked the ipsilateral adjacent areas of the upper half of the body.

Reprinted from Bennett MI, Smith BH, Torrance N, Potter J. J Pain. 2005 Mar;6(3):149-58,

Copyright (2005), with permission from Elsevier.

Abbreviations: CLBP, chronic low back pain; NeP, neuropathic pain; S-LANSS, self-reported Leeds Assessment of Neuropathic Symptoms and Signs.