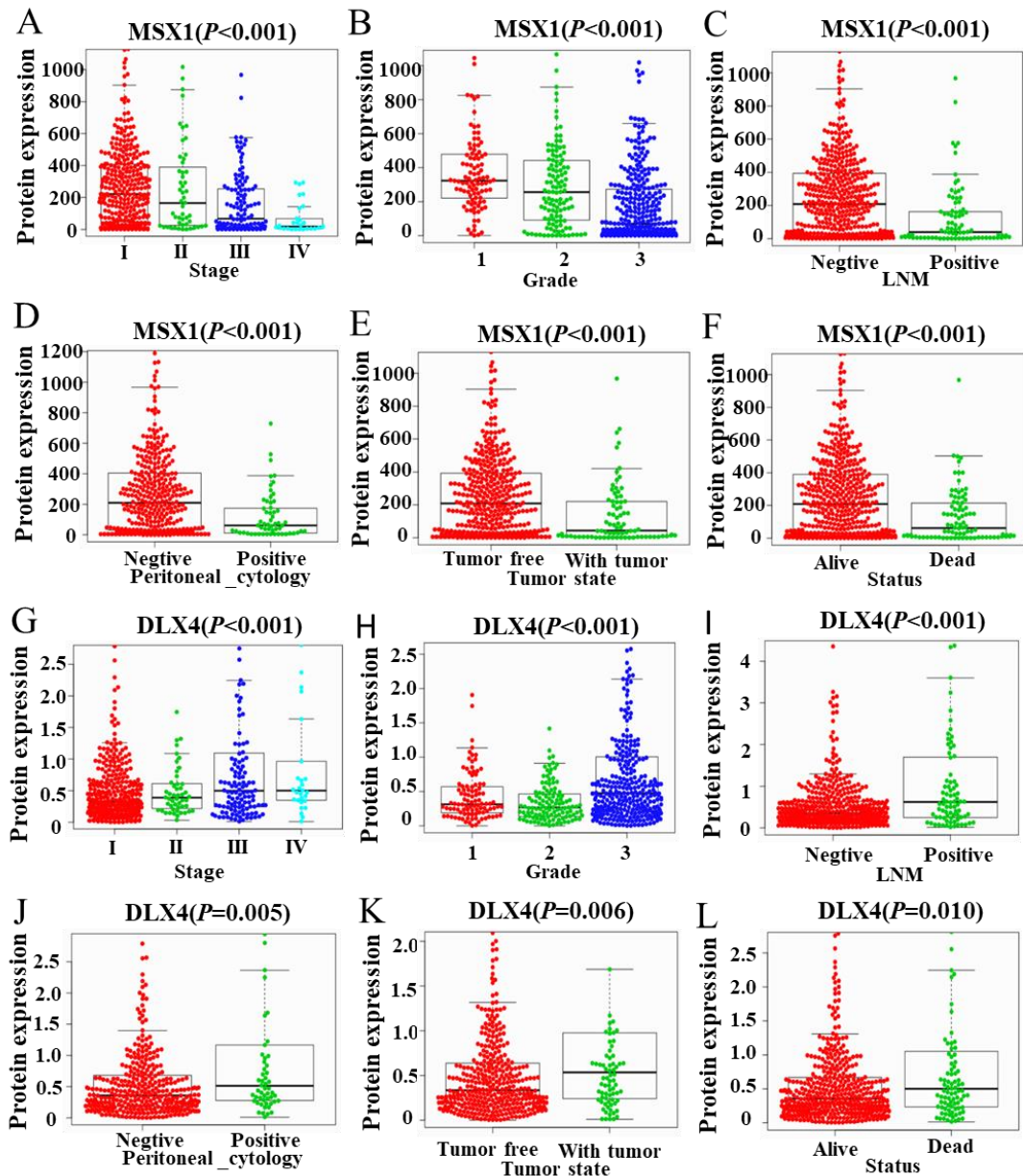


**Supplementary Figure S1.** Associations of the variables in the prognostic signature with the clinicopathological features of EC patients in the entire cohort. A. DLX2 was significantly correlated with tumor grade. B. HOXB9 was significantly correlated with survival status of patients. C-D: FOXP3 was significantly correlated with tumor state and status. E-H. BNC2 was significantly correlated with clinicopathological features (stage, grade, LNM and peritoneal\_cytology). I-N: E2F1 was significantly correlated with clinicopathological features (stage, grade, LNM, peritoneal\_cytology, tumor state and status).



**Supplementary Figure S2.** Associations of the variables in the prognostic signature with the clinicopathological features of EC patients in the entire cohort. A-F. MSX1 was significantly correlated with clinicopathological features (stage, grade, LNM, peritoneal\_cytology, tumor state and status). G-L. DLX4 was significantly correlated with clinicopathological features (stage, grade, LNM, peritoneal\_cytology, tumor state and status).