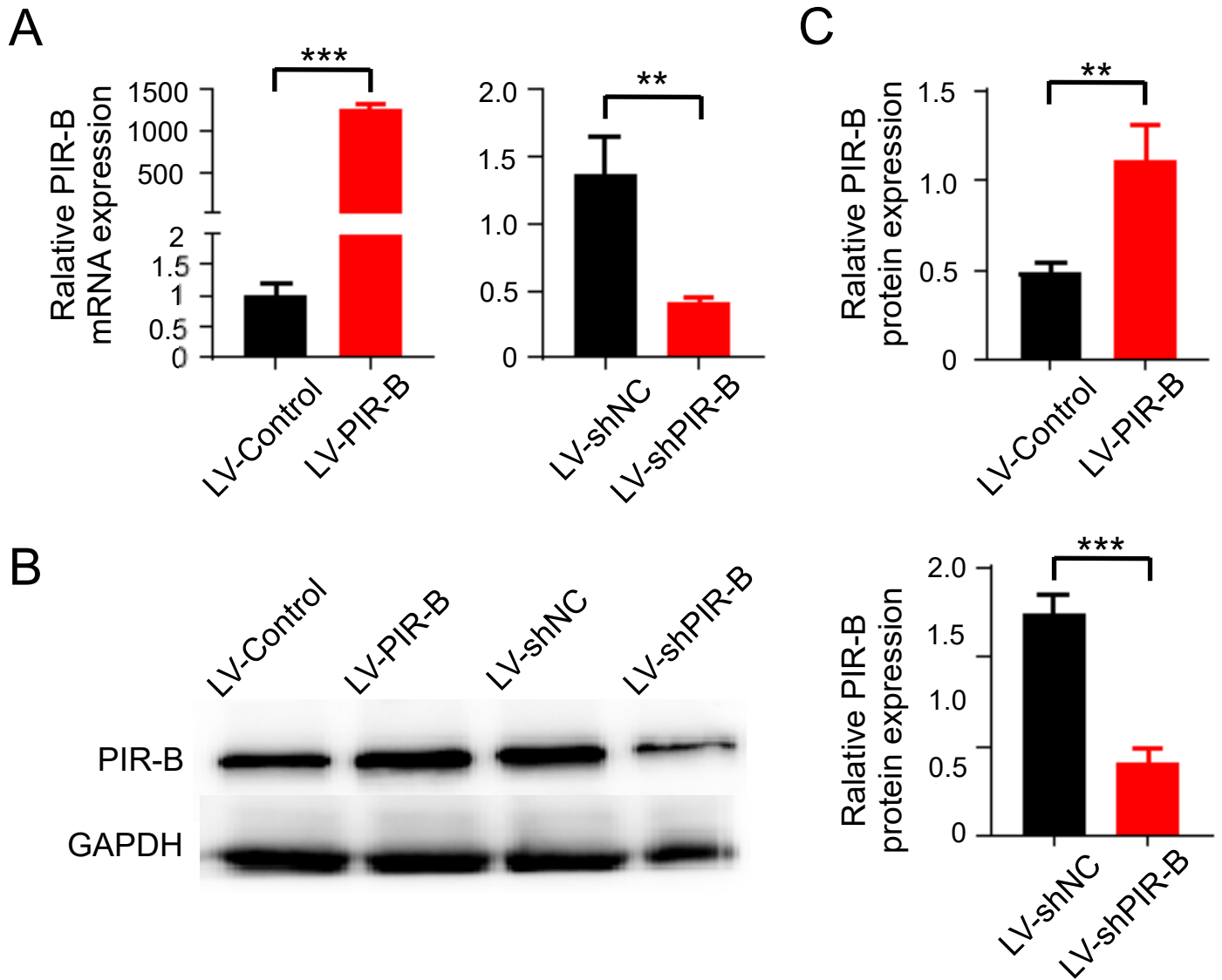


**Supplementary table 1: Baseline characteristics of 145 colorectal cancer patients**

Characteristics	Value , <i>n</i> (%)
Gender	
Male	97 (66.90)
Female	48 (33.10)
Age	
Mean±SD	65.52±12.97
Median, <i>n</i> ( <i>range</i> )	66(32-90)
Tumor size	
Mean±SD	5.48±1.96
Median, <i>n</i> ( <i>range</i> )	5.5(0.6-14)
T stage	
pT1-2	13 (8.97)
pT3-4	132 (91.03)
N stage	
pN0	85 (58.62)
pN1-2	60 (41.38)
M stage	
pM0	136 (93.79)
pM1	9 (6.21)
pTNM stage	
Stages I–II	82 (56.55)
Stages III–IV	63 (43.45)
Differentiation degree	
G1–2	98 (67.59)
G3	47 (32.41)
Perineural invasion	
No	133 (91.72)
Yes	12 (8.28)
Pathological type	
Mucous adenocarcinoma	19 (13.10)
No Mucous adenocarcinoma	126 (8.4)

T stage, invasion depth.; N stage, lymph node metastasis; M stage, Distant metastasis; pTNM, pathological TNM;



**Supplementary Figure** Detection of PIR-B expression in MC38 cell line by RT-PCR and Western blotting

(A) mRNA expression levels of PIR-B were detected by RT-PCR following transfection with lentiviral vector

(B,C) Overexpression and Knockdown of PIR-B via lentivirus were detected in protein levels using Western blotting