

## Supporting information

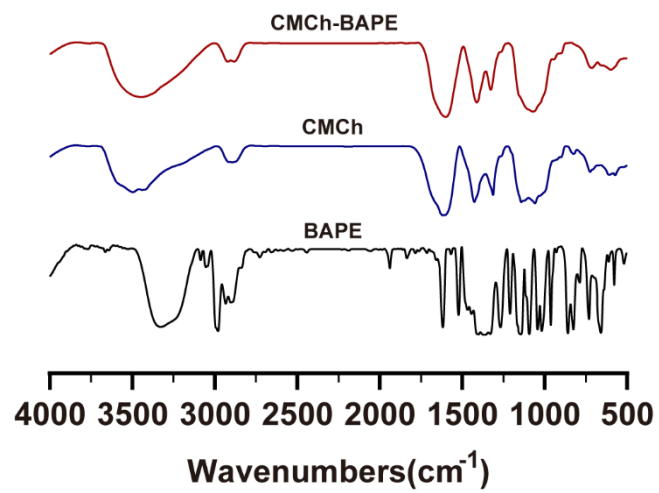
### Figure caption

**Figure S1** FTIR spectra of CMCh, BAPE, and CMCh-BAPE.

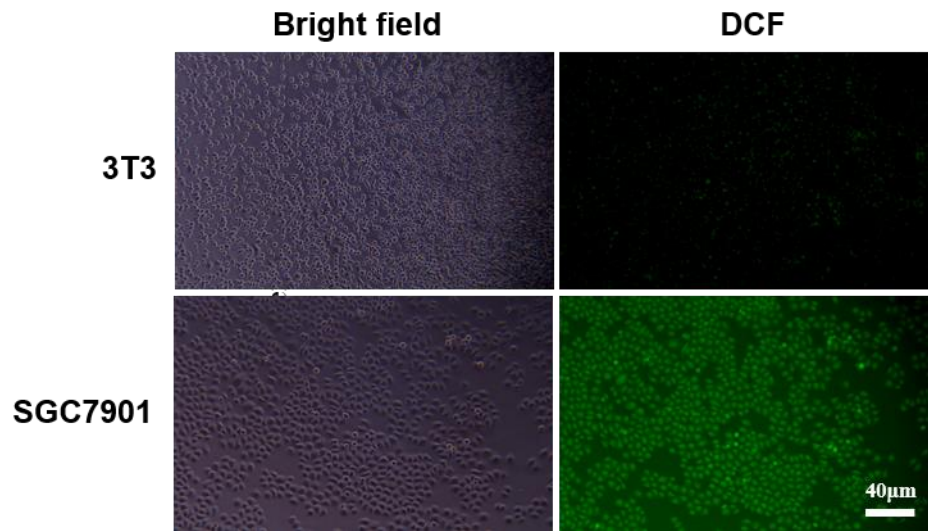
**Figure S2** Confocal laser scanning microscope images of 3T3cells and SGC7901 cells.

**Figure S3** Semi-quantitative results of in vivo distribution.

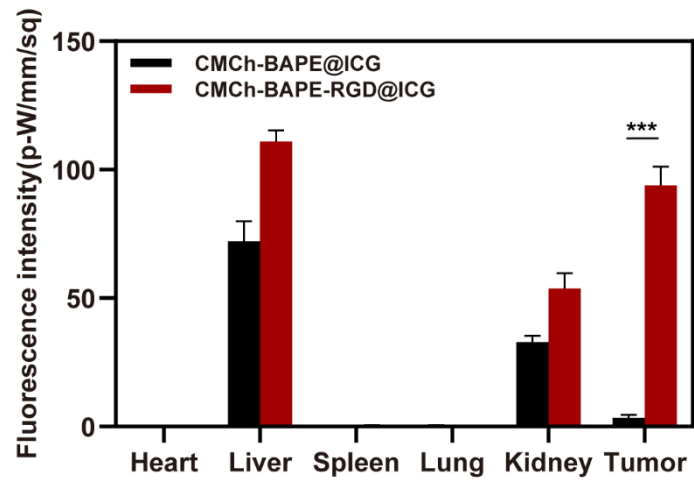
**Figure S4** (A) Weight changes curve within 21-day treatments of ICG and ICG+NIR group. (B) Tumor growth curve within 21-day treatments of ICG and ICG+NIR group. (C) Images of tumor in ICG and ICG+NIR group collected on day 21. (D) Average tumor weight in ICG and ICG+NIR group after 21-day treatment. (E) H&E, TUNEL and Ki67 staining of tumor sections in ICG and ICG+NIR group.



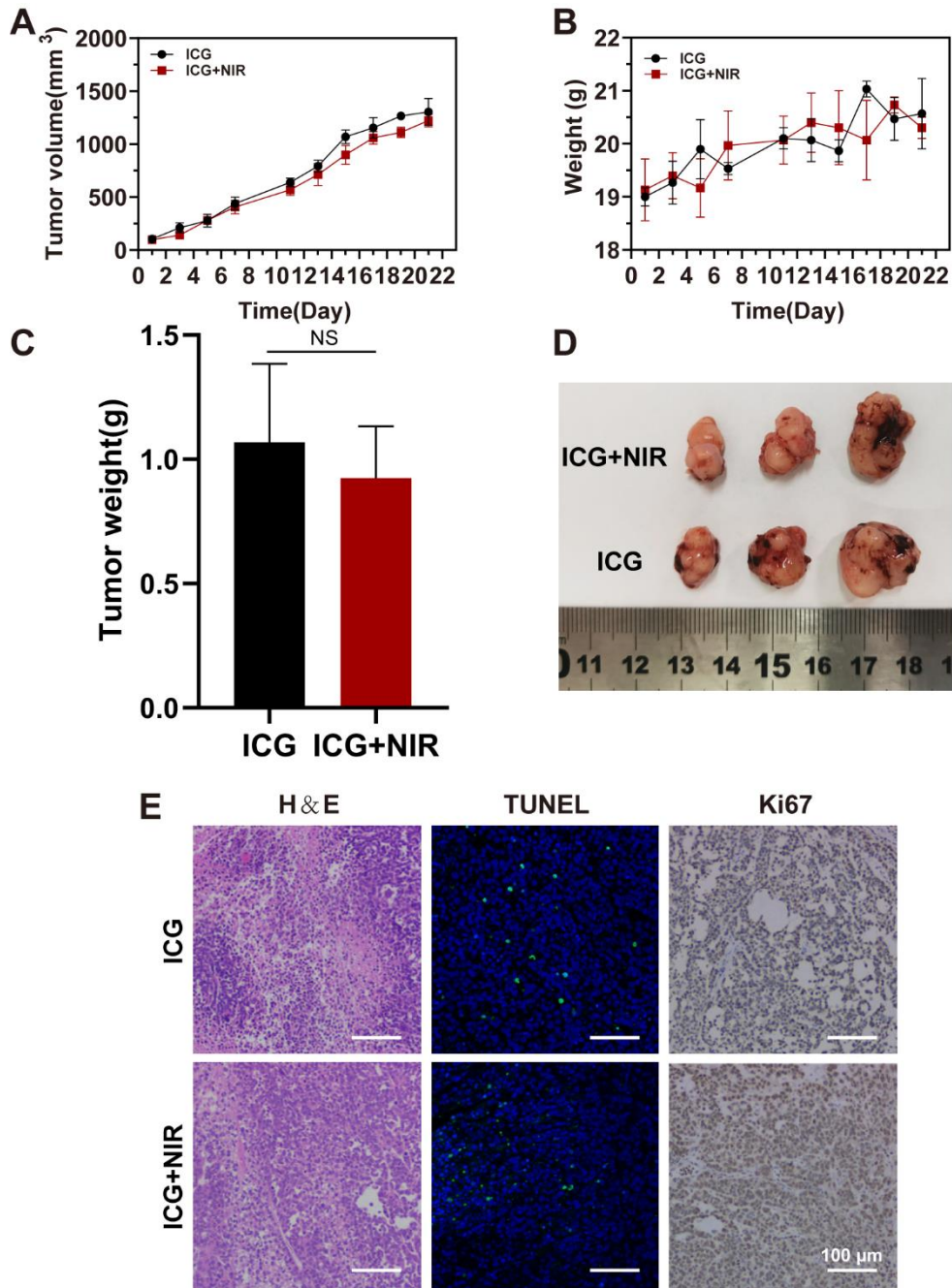
**Figure S1** FTIR spectra of CMCh, BAPE, and CMCh-BAPE.



**Figure S2** Confocal laser scanning microscope images of 3T3cells and SGC7901 cells.



**Figure S3** Semi-quantitative results of in vivo distribution.



**Figure S4** (A) Weight changes curve within 21-day treatments of ICG and ICG+NIR group. (B) Tumor growth curve within 21-day treatments of ICG and ICG+NIR group. (C) Images of tumor in ICG and ICG+NIR group collected on day 21. (D) Average tumor weight in ICG and ICG+NIR group after 21-day treatment. (E) H&E, TUNEL and Ki67 staining of tumor sections in ICG and ICG+NIR group.