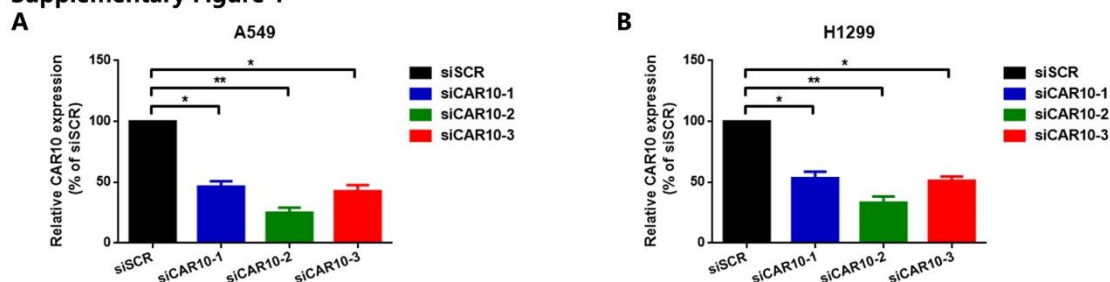


Long non-coding RNA CAR10 facilitates non-small cell lung cancer cell metastasis by modulating the miR-892a/GJB2 pathway

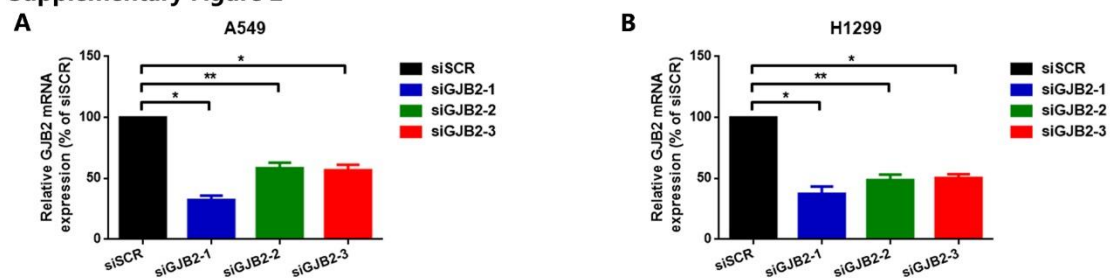
Shanshan Li, Yize Liu, Guanzhen Qiu, Yinzhou Luo, Lan Luan, Tiance Xu, Yong Wang and Shuyue Xia

Supplementary Figure 1



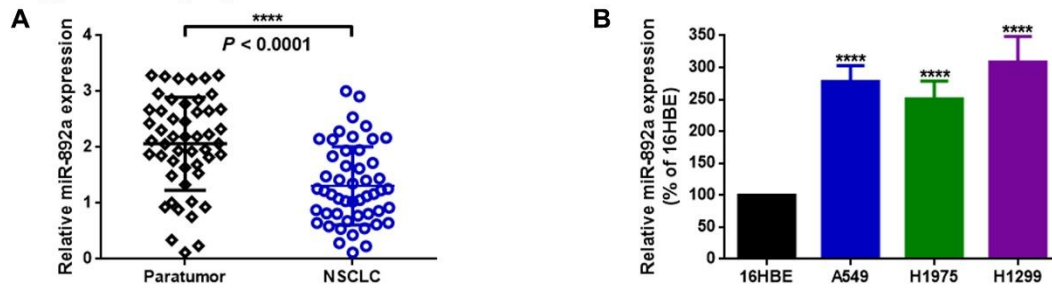
Supplementary figure 1. Three specific small interfering RNAs that targeting CAR10 were transfected into (A) A549 and (B) H1299 cells, and the expression of CAR10 was determined by reverse transcription-quantitative PCR. * $P < 0.05$ and ** $P < 0.01$. Data are presented as the mean \pm SD from three independent experiments. CAR10, chromatin-associated RNA *Intergenic 10*.

Supplementary Figure 2



Supplementary figure 2. Three specific small interfering RNAs that targeted GJB2 were transfected into (A) A549 and (B) H1299 cells, and the expression of GJB2 was determined by reverse transcription-quantitative PCR. * $P < 0.05$ and ** $P < 0.01$. Data are presented as the mean \pm SD from three independent experiments. GJB2, gap junction protein beta 2.

Supplementary figure 3



Supplementary figure 3. The expression of miR-892a in NSCLC tissue samples (A) and in NSCLC cell lines (B) were measured by reverse transcription-quantitative PCR.

**** $P < 0.0001$. Data are presented as the mean \pm SD from three independent experiments.

Supplementary table I. Overlapping differentially expressed genes in dataset GSE19188.

8 overlapped DEGs in GSE19188

ID	adj.P.Val	P.Value	t	B	logFC	Gene.symbol	Gene.title
1552766_at	0.119755	7.92E-03	3.149121	-2.57208	4.3473223	HS6ST2	heparan sulfate 6-O-sulfotransferase 2
37892_at	0.081704	3.57E-03	3.5699237	-1.80935	4.0197917	COL11A1	collagen type XI alpha 1 chain
209125_at	0.030674	5.18E-04	4.6170278	0.04734	3.6339387	KRT6A	keratin 6A
209875_s_at	0.068119	2.51E-03	3.757594	-1.47018	3.6184956	SPP1	secreted phosphoprotein 1
203889_at	0.092009	4.61E-03	3.4345128	-2.05478	3.1717812	SCG5	secretogranin V
204580_at	0.109227	6.56E-03	3.2483354	-2.39242	3.0672376	MMP12	matrix metalloproteinase 12
223278_at	0.034965	6.82E-04	4.4643512	-0.21649	3.064814	GJB2	gap junction protein beta 2
203878_s_at	0.19935	2.28E-02	2.5908403	-3.56841	2.4589426	MMP11	matrix metalloproteinase 11

Supplementary table II. Overlapping differentially expressed genes in dataset GSE30219.

8 overlapped DEGs in GSE30219							
ID	adj.P.Val	P.Value	t	B	logFC	Gene.symbol	Gene.title
204580_at	9.37E-14	1.41E-15	8.6166523	24.78038	4.7341592	MMP12	matrix metalloproteinase 12
204475_at	3.57E-08	1.76E-09	6.2848818	11.05461	3.990671	MMP1	matrix metalloproteinase 1
209875_s_at	3.28E-17	2.71E-19	9.8909501	33.18718	3.8799062	SPP1	secreted phosphoprotein 1
37892_at	7.50E-07	5.29E-08	5.6381259	7.755252	3.1579413	COL11A1	collagen type XI alpha 1 chain
230030_at	4.57E-08	2.32E-09	6.2344825	10.78841	2.9634373	HS6ST2	heparan sulfate 6-O-sulfotransferase 2
223278_at	1.79E-04	2.63E-05	4.295339	1.797876	2.8480633	GJB2	gap junction protein beta 2
209125_at	3.18E-02	1.21E-02	2.5316507	-3.87842	2.6499132	KRT6A	keratin 6A
203889_at	2.64E-06	2.20E-07	5.3520754	6.380573	2.5150231	SCG5	secretogranin V

Supplementary table III. Overlapping differentially expressed genes in dataset GSE118370.

8 overlapped DEGs in GSE118370

ID	adj.P.Val	P.Value	t	B	logFC	Gene.symbol	Gene.title
1552766_at	0.119755	7.92E-03	3.149121	-2.57208	4.3473223	HS6ST2	heparan sulfate 6-O-sulfotransferase 2
37892_at	0.081704	3.57E-03	3.5699237	-1.80935	4.0197917	COL11A1	collagen type XI alpha 1 chain
204475_at	0.042965	1.01E-03	4.2492089	-0.59298	3.857191	MMP1	matrix metalloproteinase 1
209125_at	0.030674	5.18E-04	4.6170278	0.04734	3.6339387	KRT6A	keratin 6A
209875_s_at	0.068119	2.51E-03	3.757594	-1.47018	3.6184956	SPP1	secreted phosphoprotein 1
203889_at	0.092009	4.61E-03	3.4345128	-2.05478	3.1717812	SCG5	secretogranin V
204580_at	0.109227	6.56E-03	3.2483354	-2.39242	3.0672376	MMP12	matrix metalloproteinase 12
223278_at	0.034965	6.82E-04	4.4643512	-0.21649	3.064814	GJB2	gap junction protein beta 2
