










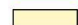
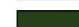




Prophage types

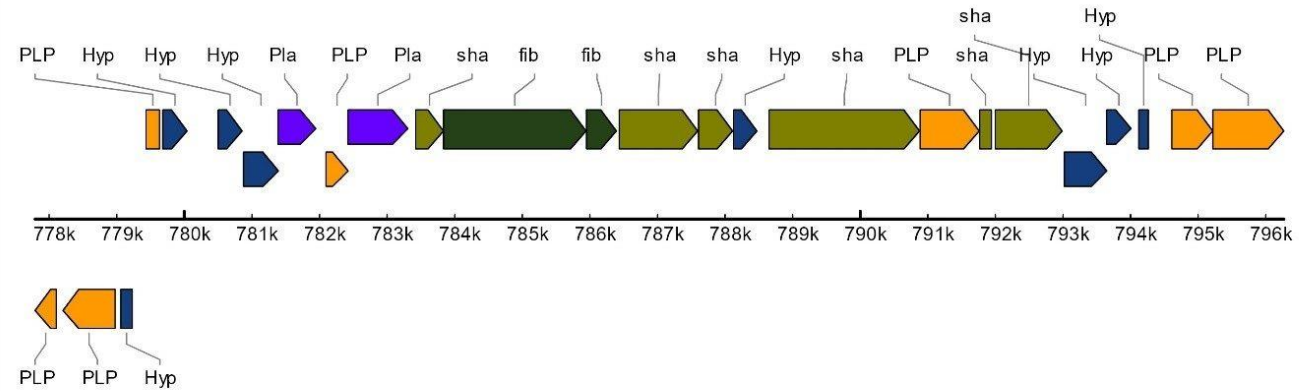
- | | | |
|---|---|---|
|  intact prophage |  incomplete prophage |  questionable prophage |
|---|---|---|

BLAST identified phage elements

- | | | |
|--|---|--|
|  Lysis |  Terminase |  Portal |
|  Protease |  Coat |  Tail shaft |
|  Attachment site |  Integrase |  Other phage-like protein |
|  Hypothetical protein |  Other |  Transposase |
|  Tail fiber |  Plate |  tRNA |

Supplementary Figure 1 prophage types visualization

Prophage region: 1
Number of CDS: 25
Location: from 777791 to 796266 (18476 bps)
Predicted status: intact prophage
GC content: 65.25%

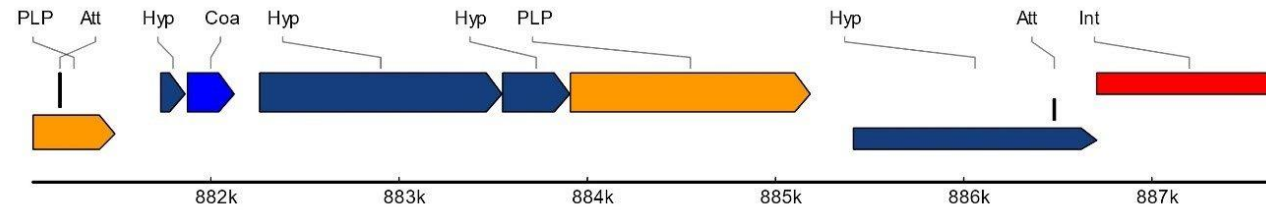


Identified CDS types:

	1	Lysis		2	Terminase		3	Portal
	4	Protease		5	Coat		6	Tail shaft
	7	Attachment site		8	Integrase		9	Other phage-like protein
	10	Hypothetical protein		11	Other		12	Transposase
	13	Tail fiber		14	Plate		15	tRNA

Supplementary Figure 2 Identified CDS types, prophage region 1

Prophage region: 2
Number of CDS: 10
Location: from 881055 to 887689 (6635 bps)
Predicted status: questionable prophage
GC content: 62.47%

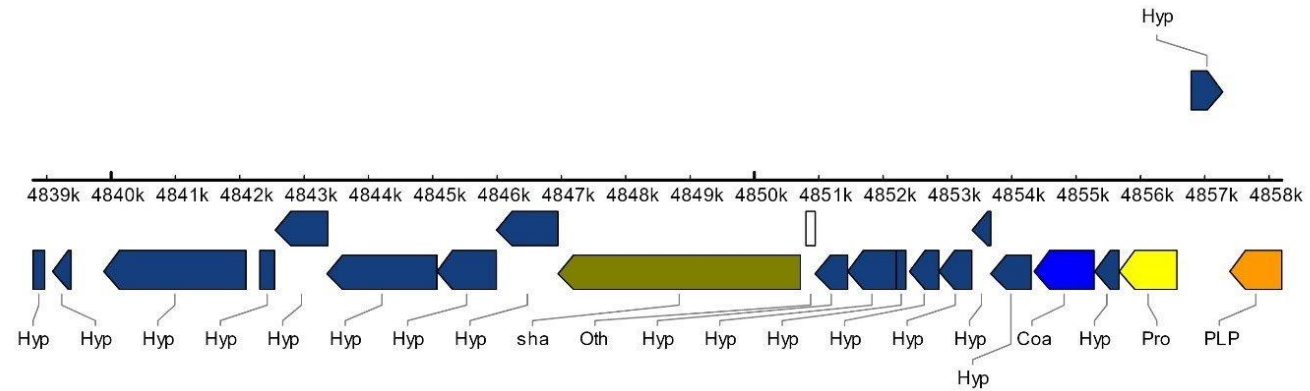


Identified CDS types:



Supplementary Figure 3 Identified CDS types, prophage region 2

Prophage region: 3
Number of CDS: 22
Location: from 4838787 to 4858196 (19410 bps)
Predicted status: incomplete prophage
GC content: 64.49%



Identified CDS types:



Supplementary Figure 4 Identified CDS types, prophage region 3