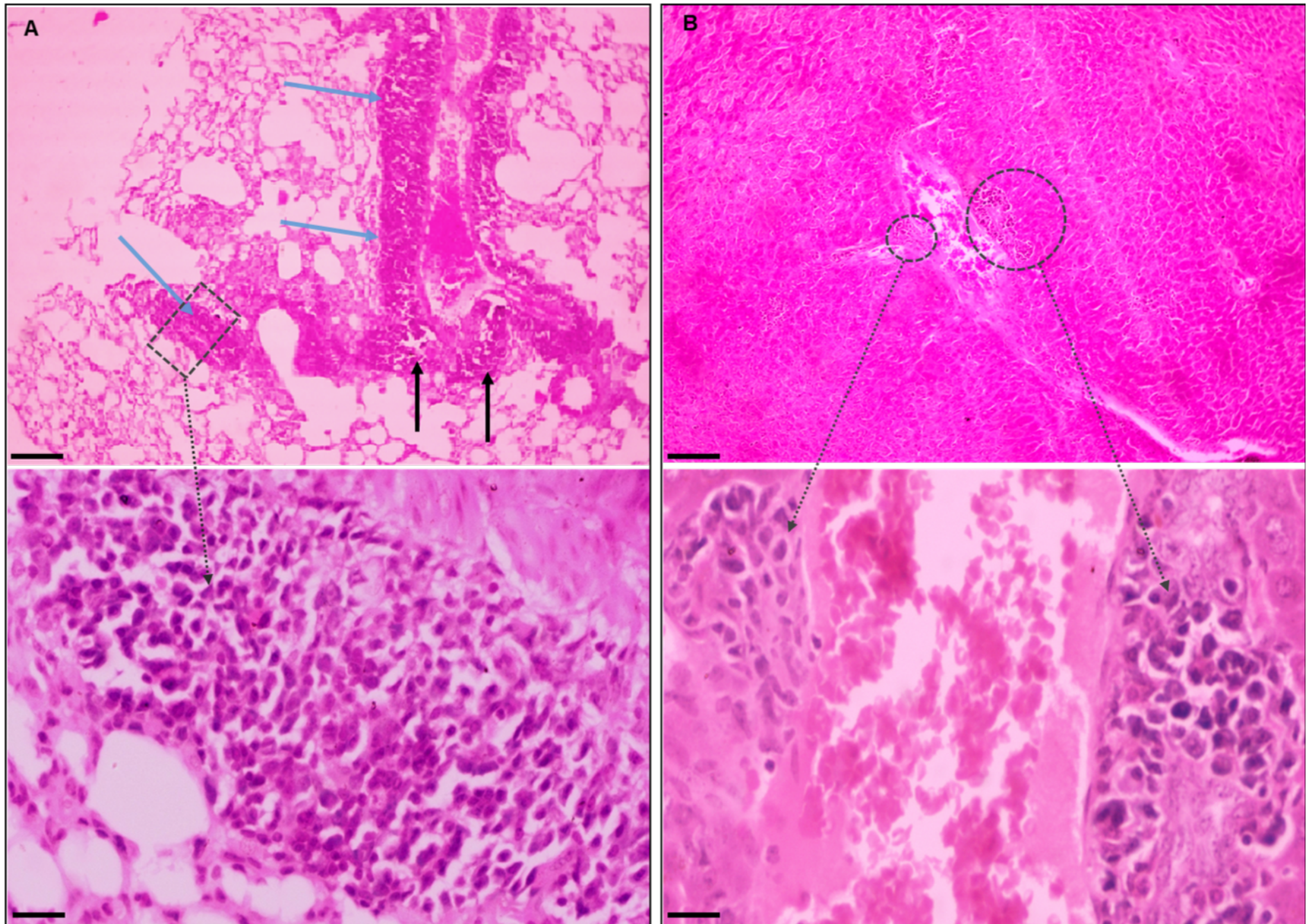


Supplementary Figure 1



Legends to supplementary figure

Supplementary Figure 1 (S1): Development of cancer by BaP in lungs and liver

Notes: The representative H&E stained images of: **(A)** G2 Lungs: section is showing clumps of malignant tumor consisting of sheets of small cells (blue arrow) with frequent necrosis (black arrow). **(B)** G2 Liver: is showing focal clusters of small malignant cells within and beside the blood vessel indicating vascular invasion. H&E staining, upper panel: 100x, bar = 100 μ m; lower panel: 400x, bar = 50 μ m.