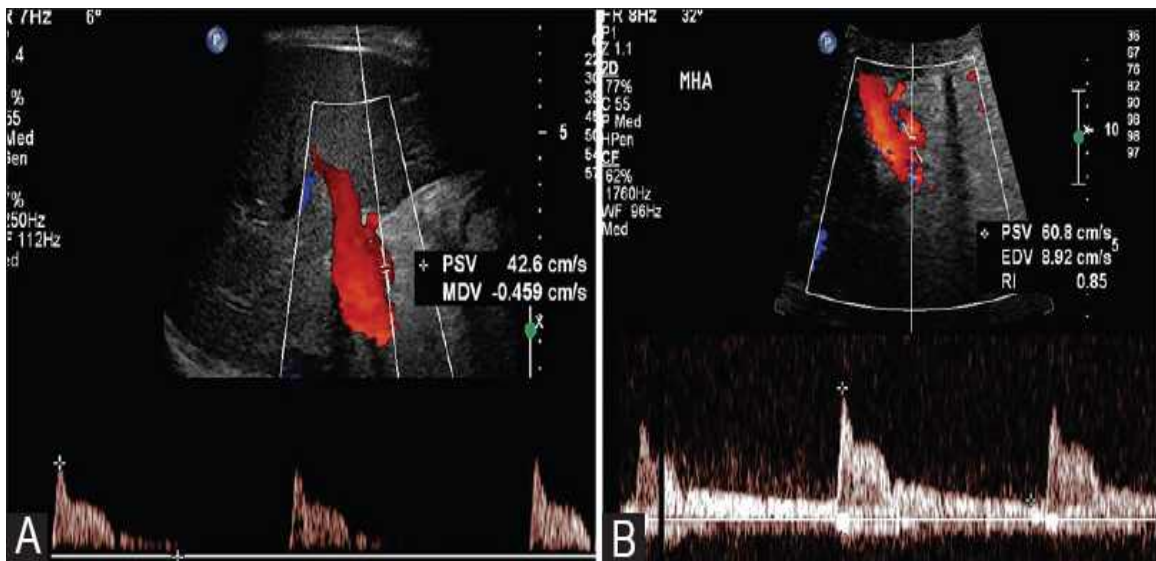


Supp. Figure 1: Example of gradual decrease of PVV during the early PO period

(A) First PO day Doppler US post LT shows increased PVV (PVV 123 cm/s)

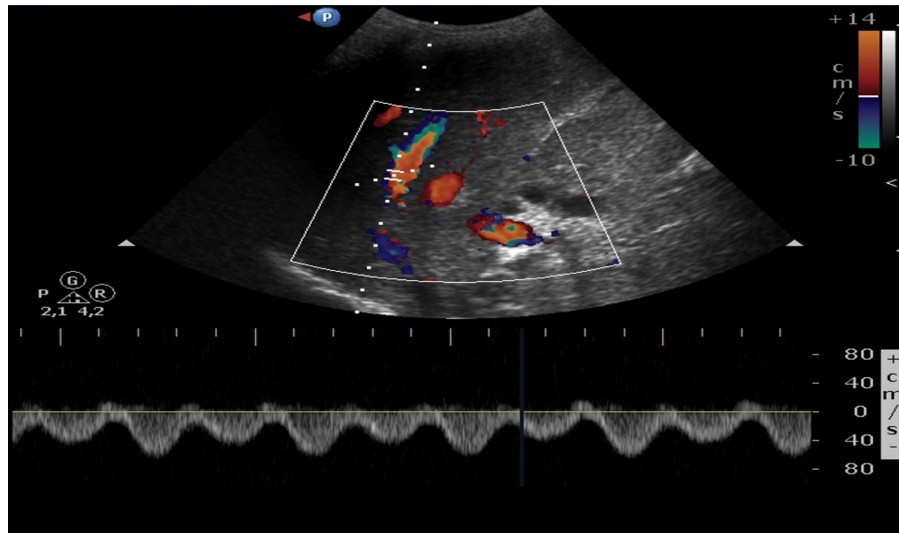
(B) Follow-up Doppler US performed 7 days later shows decrease in the PVV (59 cm/s).



Supp. Figure 2: Example of changes occurring in both RI and PSV early in the PO period

(A) Doppler US on day 1 post LT demonstrates near absent diastolic hepatic arterial flow (RI = 1)

(B) Follow-up Doppler US after four days shows improvement of the waveform (RI 0.85).



Supp. Figure 3: Normal triphasic hepatic veins waveform