

Supplementary materials

Figure Legends

Figure S1. The blood expression levels of triglycerides (TG), total cholesterol (TC), high-density lipoprotein (HDL), low-density lipoprotein (LDL) in benign liver disease (BL), chronic hepatitis (CH), liver cirrhosis (LC), and hepatocellular carcinoma (HCC) groups. A, triglycerides (TG). B, total cholesterol (TC). C, high-density lipoprotein (HDL). D, low-density lipoprotein (LDL). * indicates $P < 0.05$, ** indicates $P < 0.01$

Figure S2. Overall survival curves in training cohort. A, ApoB. B, ApoE. C, triglycerides (TG). D, total cholesterol (TC). E, high-density lipoprotein (HDL). F, low-density lipoprotein (LDL).

Figure S3. Disease free survival curves in training cohort. A, ApoB. B, ApoE. C, triglycerides (TG). D, total cholesterol (TC). E, high-density lipoprotein (HDL). F, low-density lipoprotein (LDL).

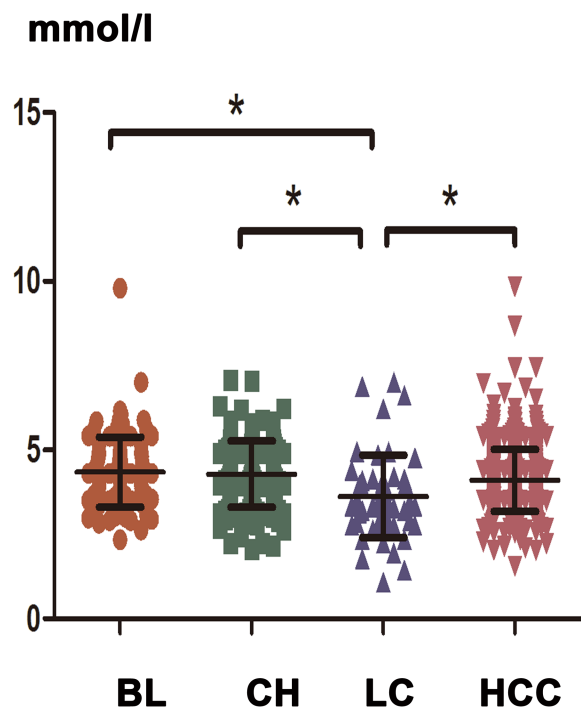
Figure S4. Overall survival curves in validation cohort. A, ApoB. B, ApoE. C, triglycerides (TG). D, total cholesterol (TC). E, high-density lipoprotein (HDL). F, low-density lipoprotein (LDL).

Figure S5. Disease free survival curves in validation cohort. A, ApoB. B, ApoE. C, triglycerides (TG). D, total cholesterol (TC). E, high-density lipoprotein (HDL). F, low-density lipoprotein (LDL).

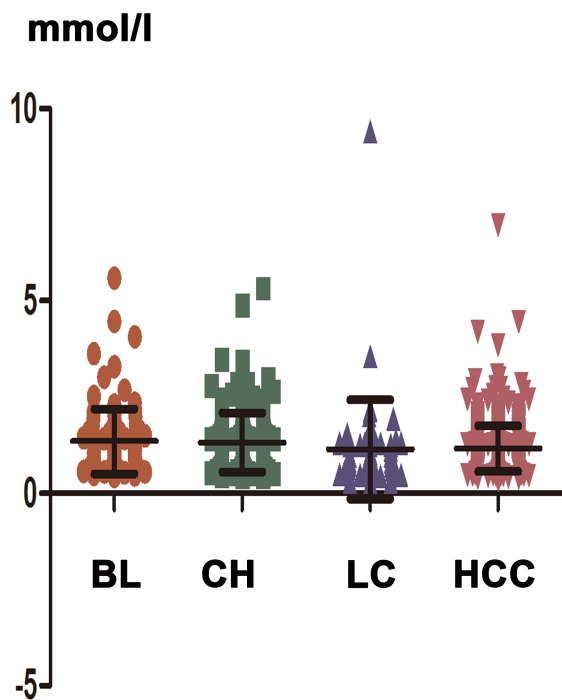
Figure S6. Prognostic significance of ApoA1 in patients with AFP concentration of ≤ 400 ng/mL in the training and validation cohorts. (A, B) HCC patients with a low ApoA1 have a poor OS (A) and short DFS (B) in training cohort. (C, D) HCC patients with a low ApoA1 have a poor OS (C) and short DFS (D) in validation cohort.

Figure S7. Early recurrence curves according to ApoA1 ≤ 1.23 g/l or ApoA1 > 1.23 g/l in subgroups. (A) subgroup with an AFP concentration of ≤ 400 μ g/L in training cohort. (B) subgroup with an AFP concentration of ≤ 400 μ g/L in validation cohort. (C) subgroup with tumor size ranging from 2cm to 5cm in training cohort. (D) subgroup with an AFP concentration of ≤ 400 μ g/L in validation cohort. (E) subgroup of TNM stage I in training cohort. (F) subgroup of TNM stage I in validation cohort. (G) subgroup with solitary tumor in training cohort. (H) subgroup with solitary tumor in validation cohort.

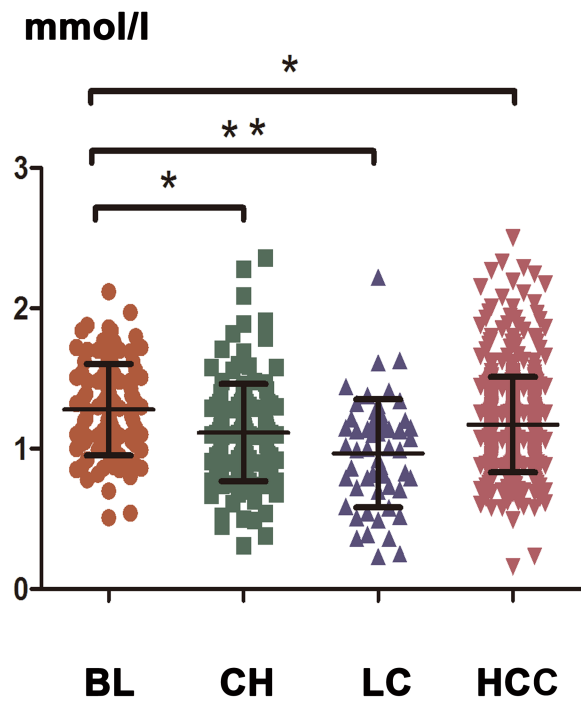
Figure S8. Early recurrence curves according to ApoA1 $\leq 1.23\text{g/l}$ or ApoA1 $>1.23\text{g/l}$ in subgroups. (A) vascular invasion negative subgroup in training cohort. (B) vascular invasion negative subgroup in validation cohort.



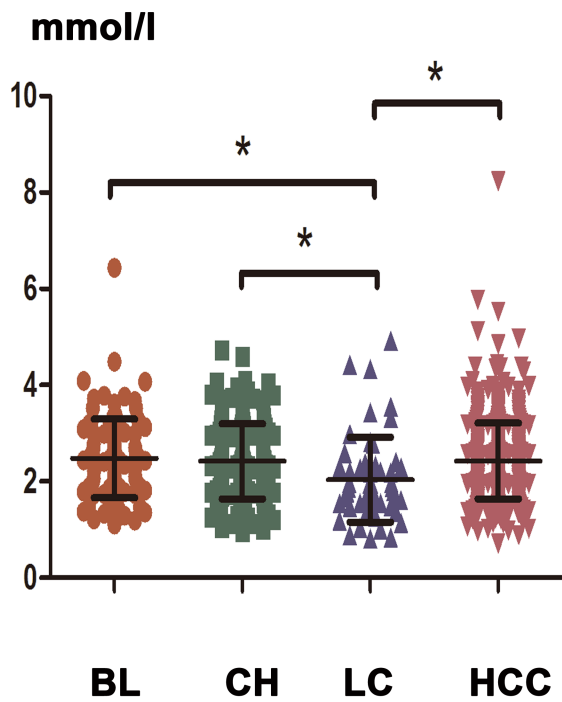
A



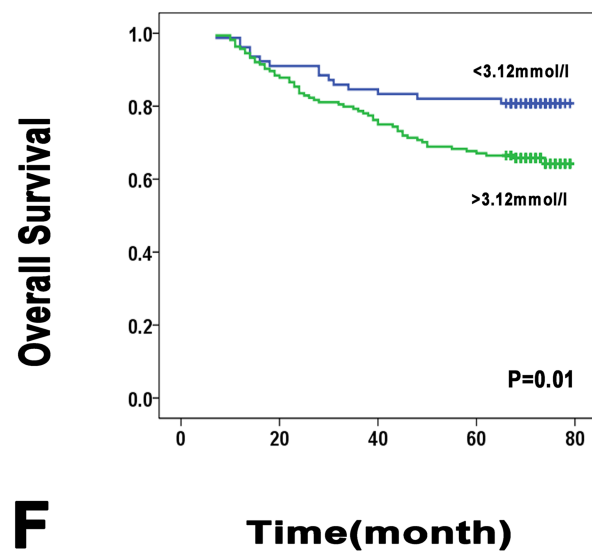
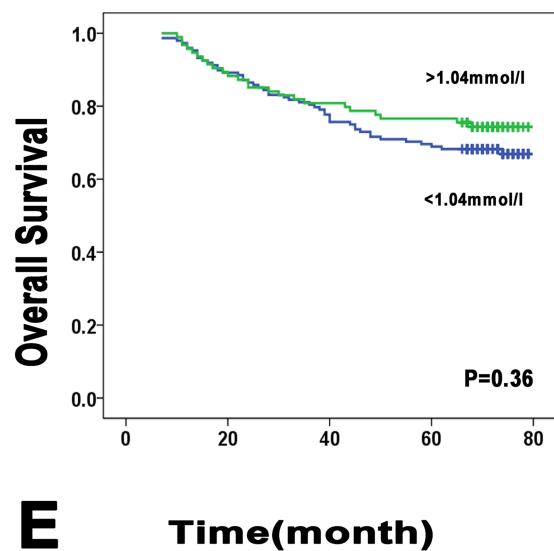
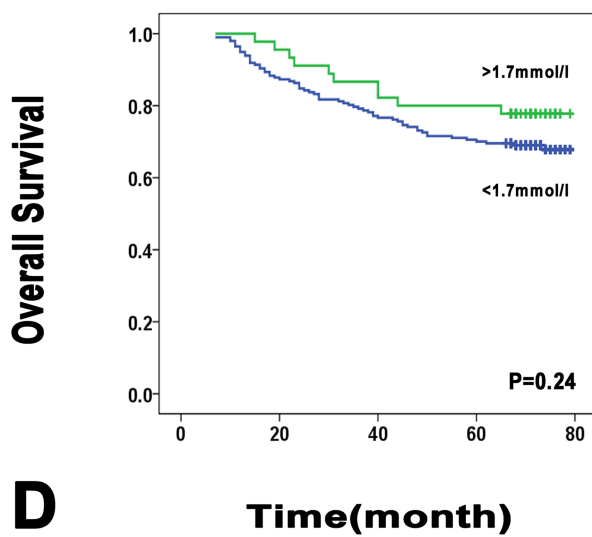
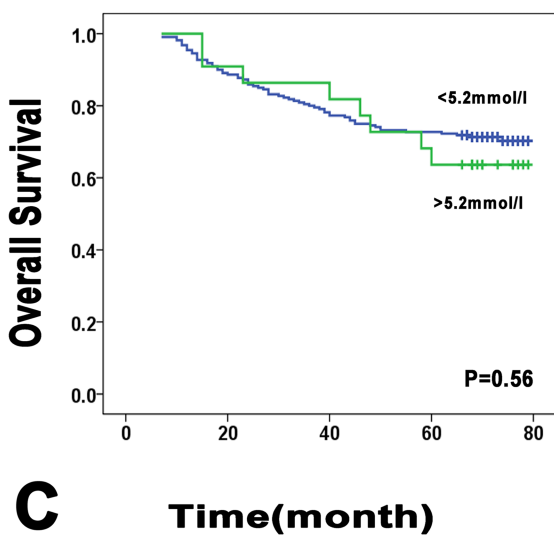
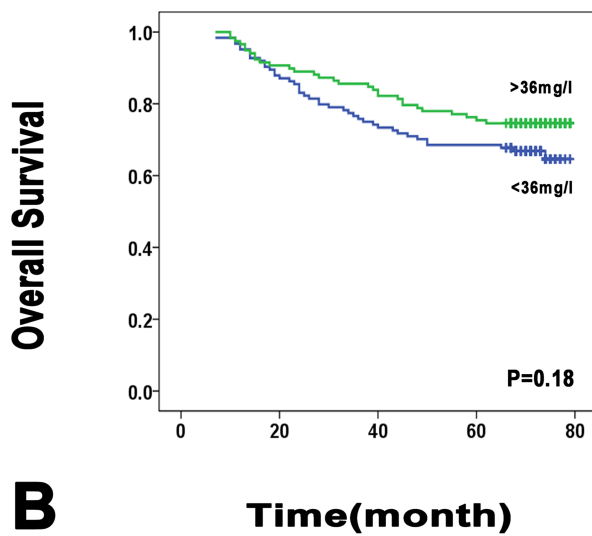
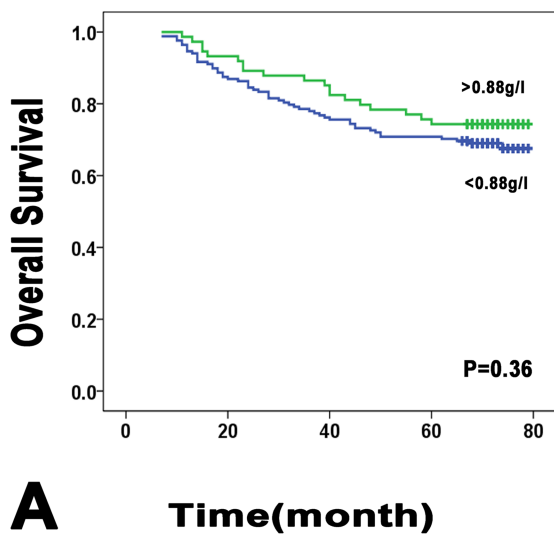
B

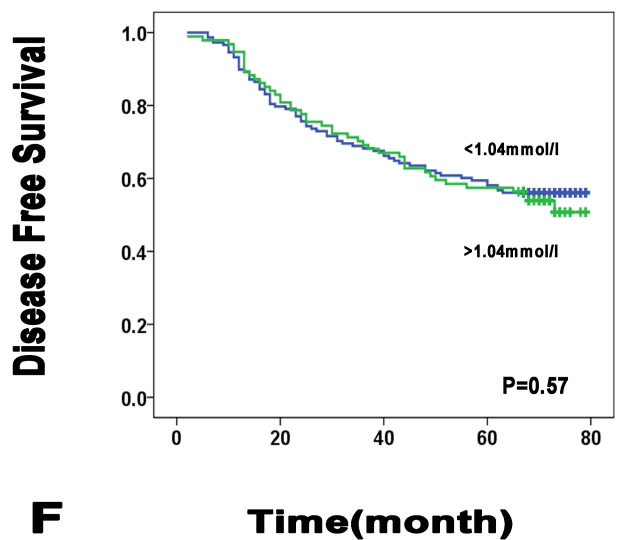
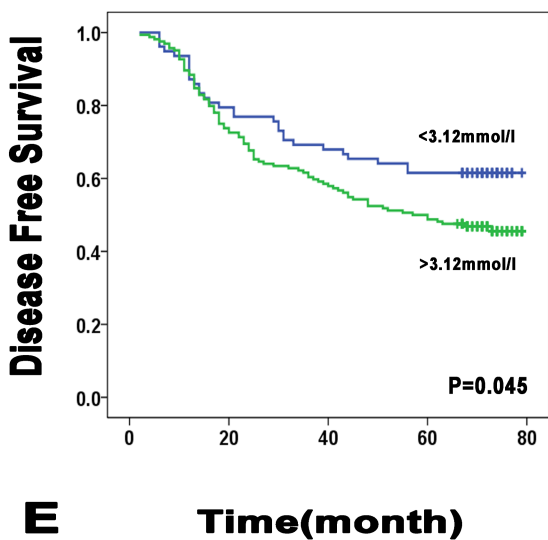
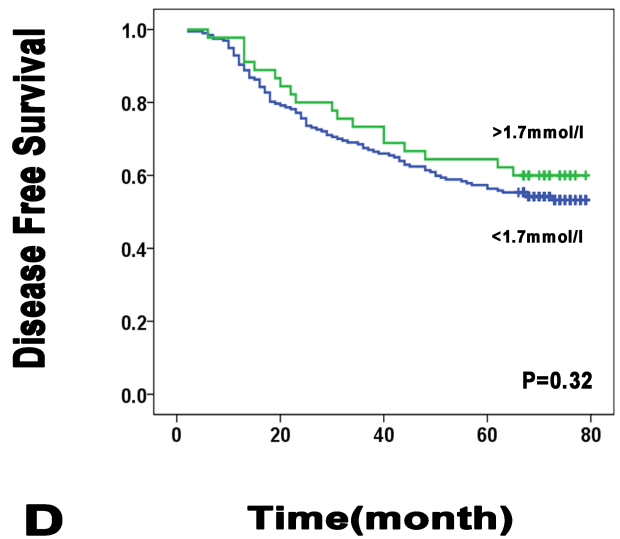
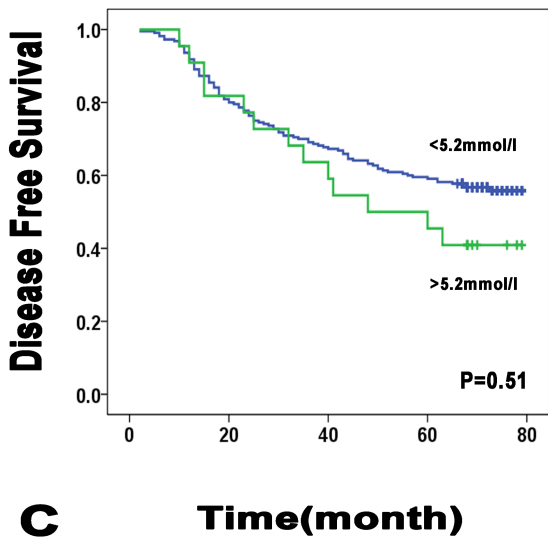
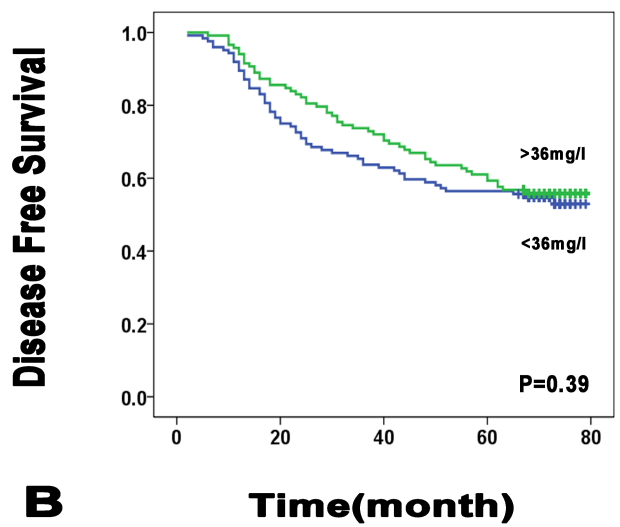
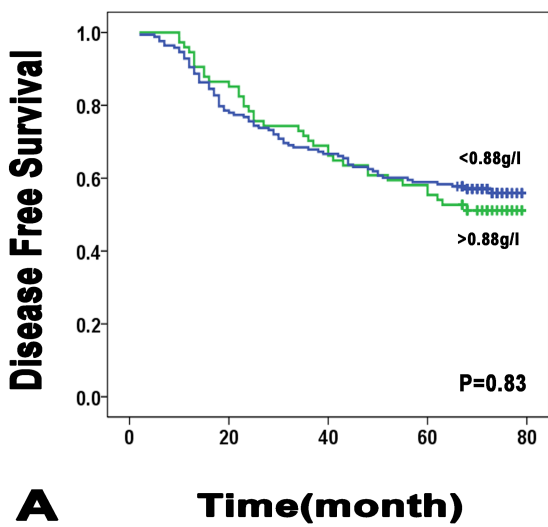


C

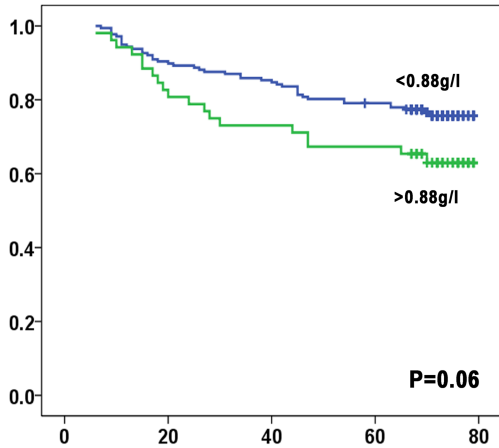


D





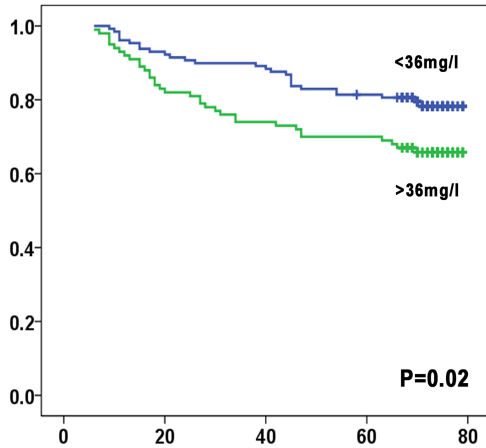
Overall Survival



A

Time(month)

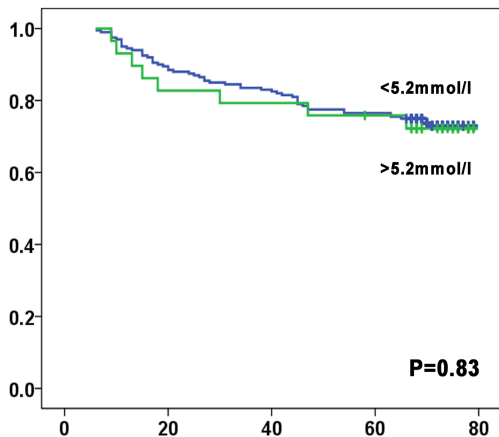
Overall Survival



B

Time(month)

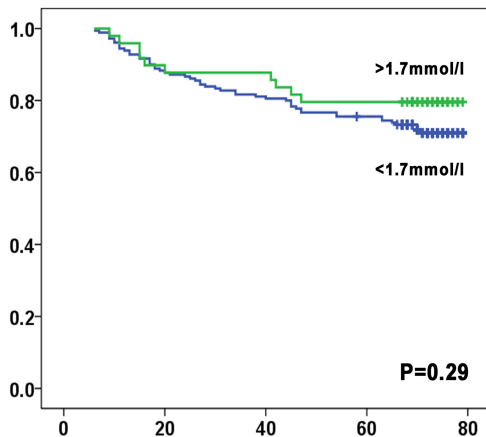
Overall Survival



C

Time(month)

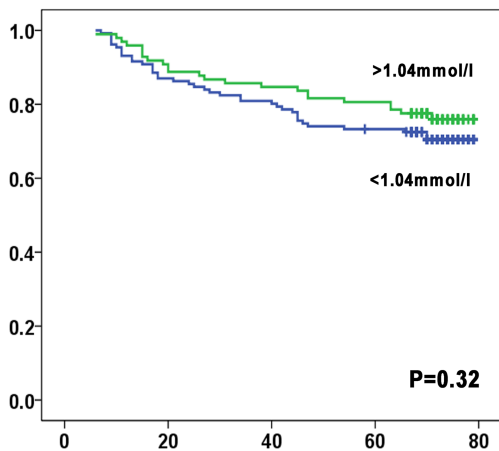
Overall Survival



D

Time(month)

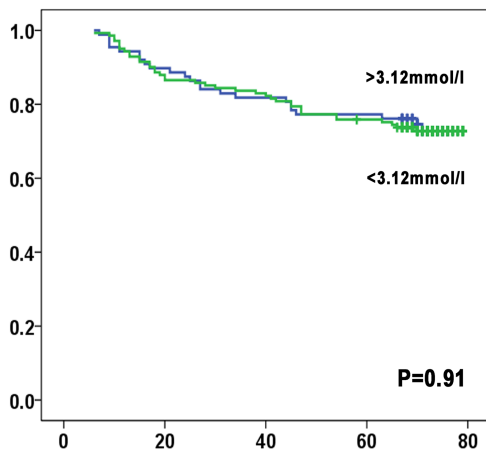
Overall Survival



E

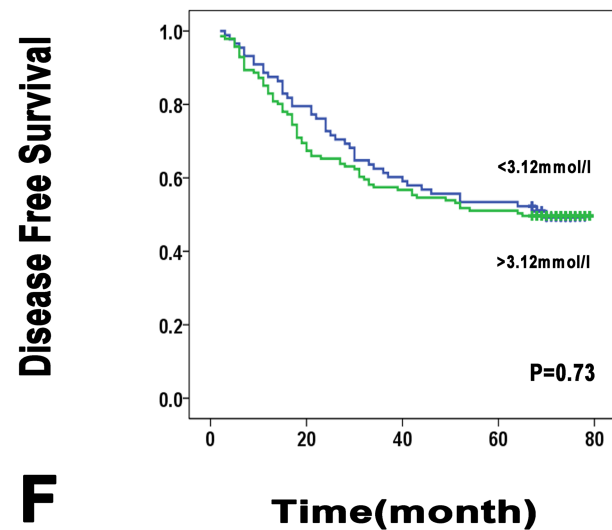
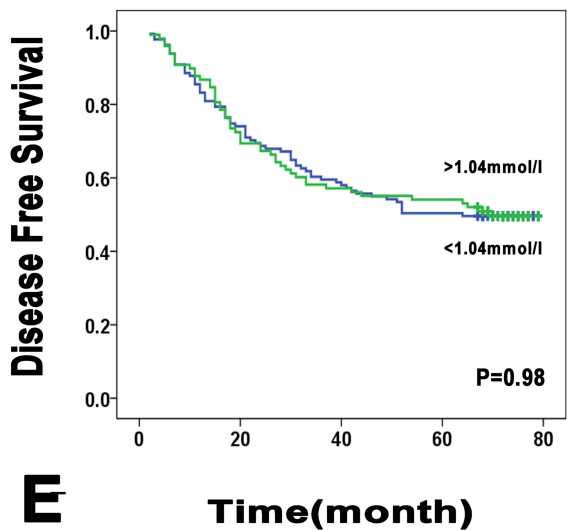
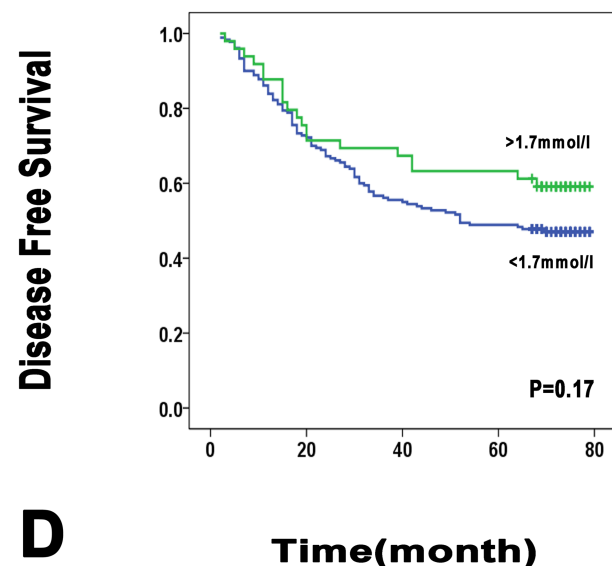
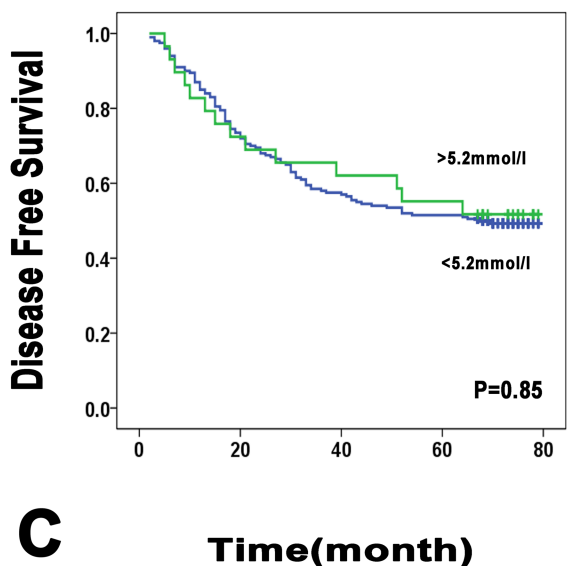
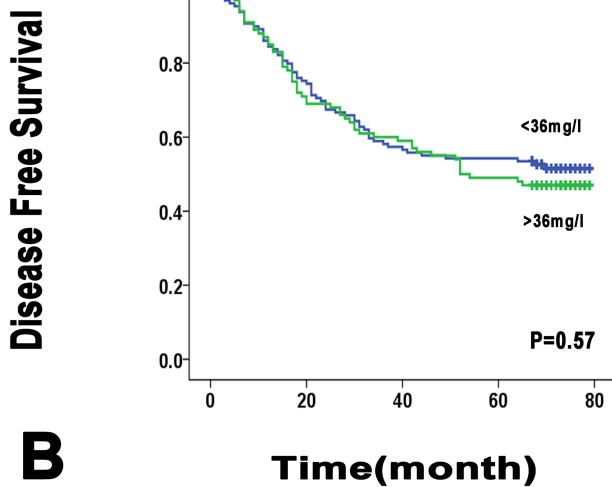
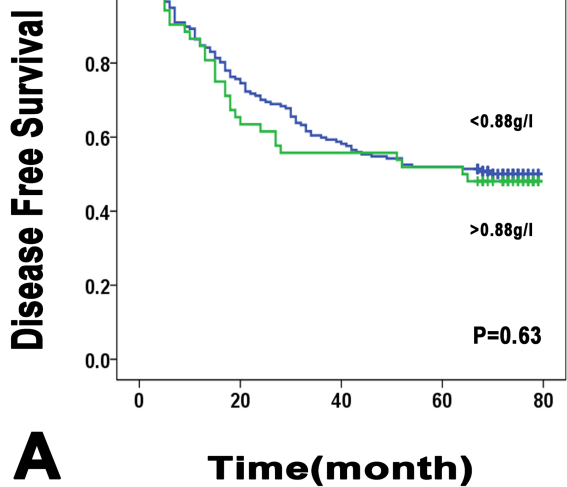
Time(month)

Overall Survival

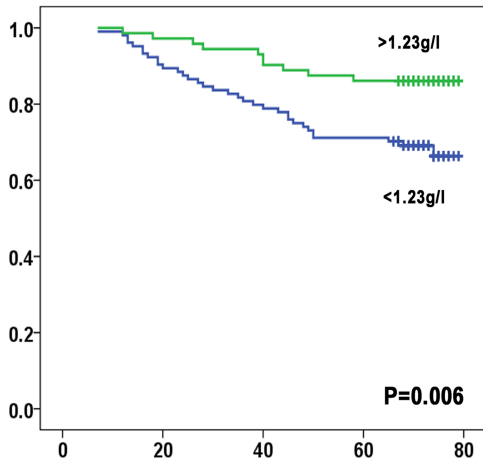


F

Time(month)



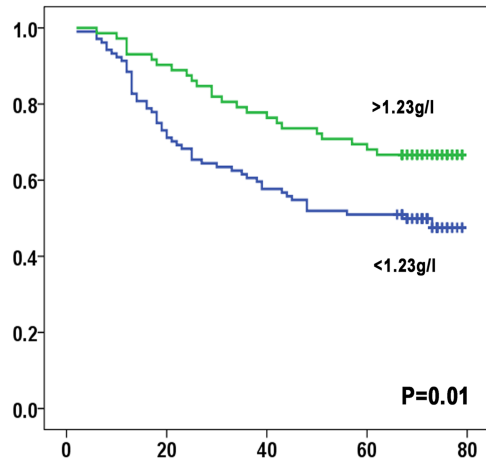
Overall Survival



A

Time(month)

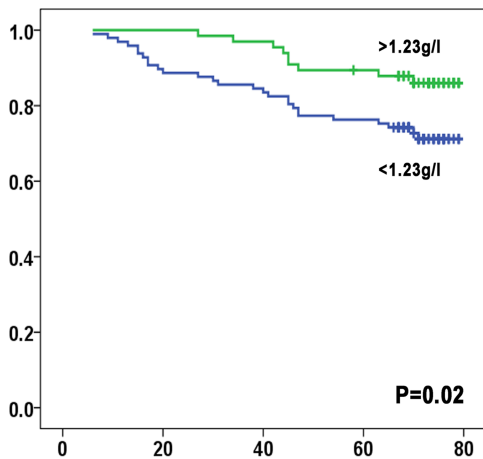
Disease Free Survival



B

Time(month)

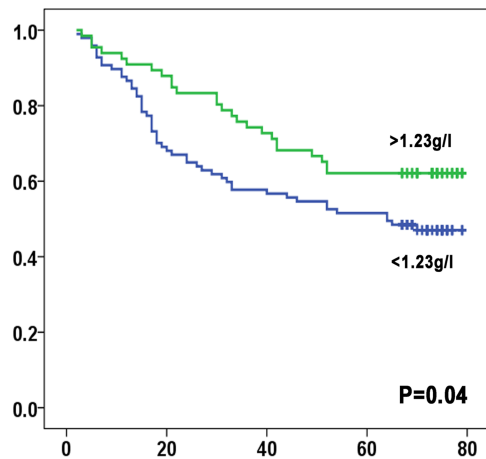
Overall Survival



C

Time(month)

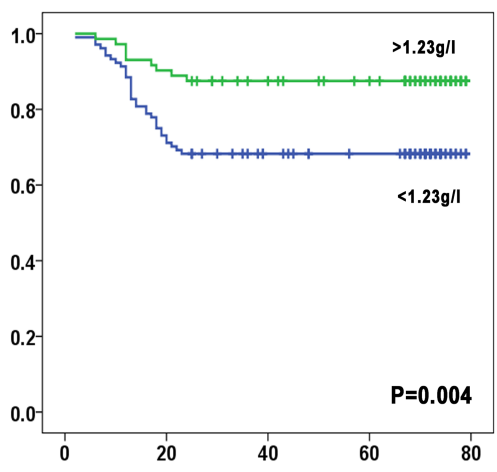
Disease Free Survival



D

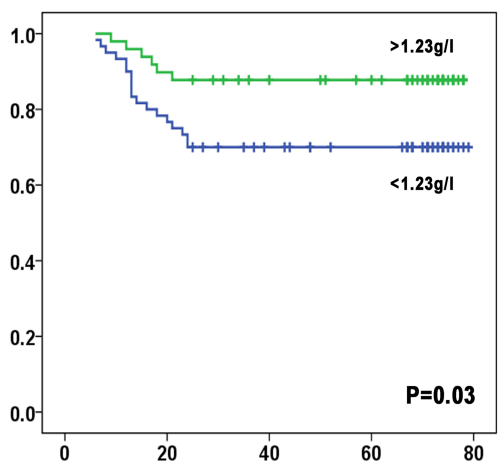
Time(month)

Early Recurrence



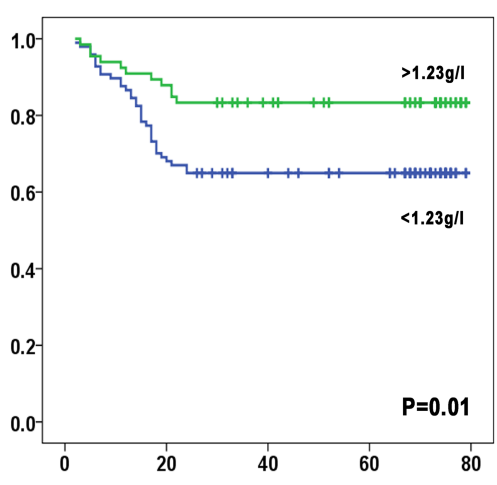
A

Early Recurrence



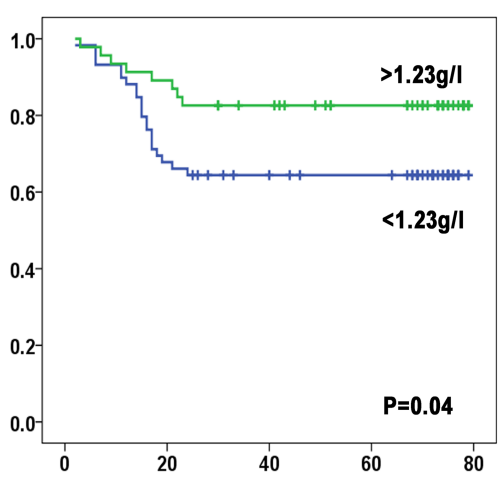
B

Early Recurrence



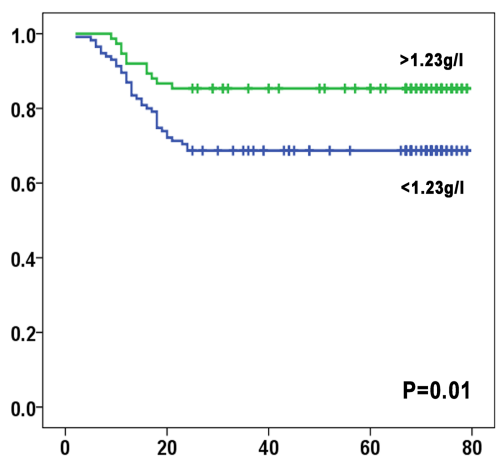
C

Early Recurrence



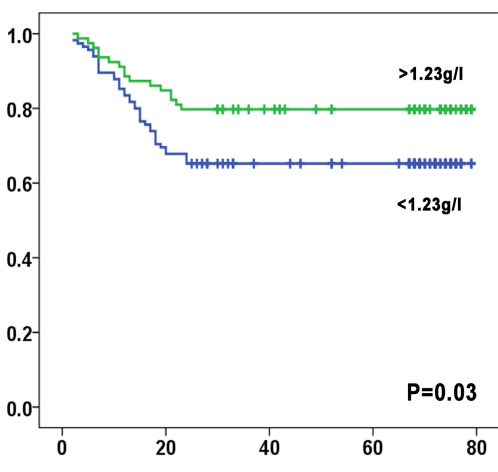
D

Early Recurrence



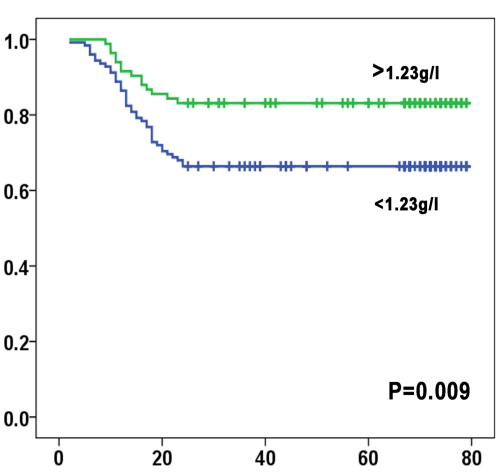
E

Early Recurrence



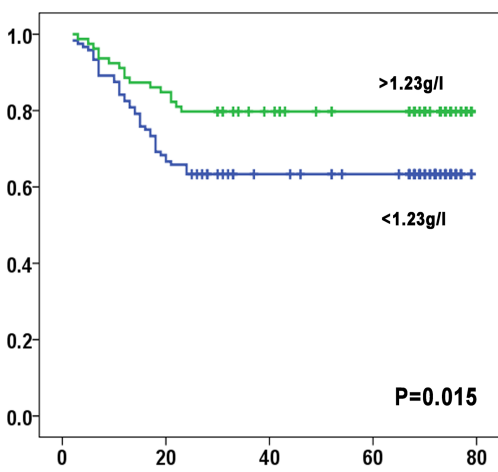
F

Early Recurrence

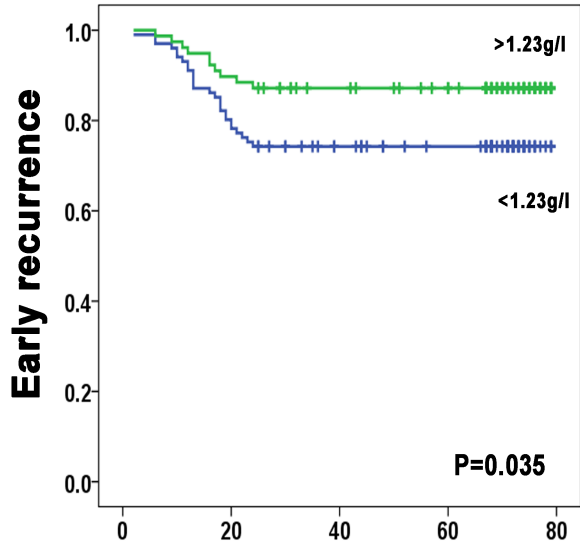


G

Early Recurrence

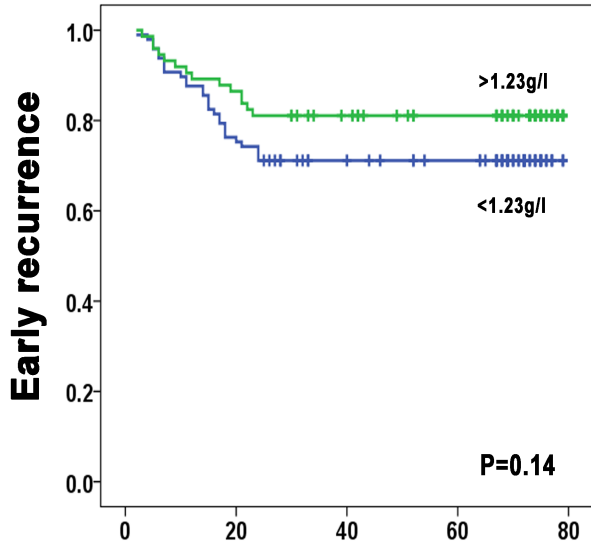


H



A

Time(month)



B

Time(month)

Table S1 Patient characteristics in the training and validation cohorts

Variable	n=242	n=229	P
Age(yr),median(range)	54(16-85)	55(26-78)	0.87
Gender(Male/Female)	209/33	189/40	0.26
liver cirrhosis	183/59	161/68	0.21
Hepatitis history	175/67	157/72	0.42
BMI	23.6(15.6-32.4)	23.4(16.4-34.9)	0.37
GLU	5.2(3.8-13.9)	5.4(2.9-18)	0.28
APLB	0.21(0.09-0.36)	0.22(0.1-0.44)	0.34
ALT	37.3(7-131)	37.5(5-145)	0.9
TB	12.6(1.7-36)	13.3(3.2-51.6)	0.22
AFP	49.9(1.1-60500)	50.1(1.3-60500)	0.88
ALB	40.8(28-49)	41.1(31-52)	0.29
GGT	75.1(10.2-587)	71.8(11-629)	0.64
TNM	190/27/25	194/19/16	0.22
Maximal tumour diameter (cm)	5.2(0.8-19)	4.6(0.8-18)	0.06
Tumour number (solitary/multiple)	208/34	199/30	0.79
Tumour capsule(complete/none)	154/88	149/80	0.77
Vascular invasion (absent/present)	229/13	222/7	0.26
Edmondson grade (I-II/III-IV)	171/71	164/65	0.84
CHOL	4.11(2.03-9.83)	4.09(1.56-8.67)	0.82
TG	1.2(0.4-6.97)	1.13(0.34-3.07)	0.18
HDL	1.17 (0.16-2.29)	1.18 (0.58-2.5)	0.73
LDL	2.42(0.96-8.24)	2.43(0.71-5.77)	0.97
ApoA1	1.19(0.16-2.37)	1.19(0.69-2.22)	0.89
ApoB	0.82(0.36-6.8)	0.81(0.28-6.87)	0.96
ApoE	38.6(16-90)	38(1-94)	0.54

Abbreviations: BMI: body mass index; GLU: glucose; APLB: prealbumin; ALT: alanine aminotransferase; TB: total bilirubin; AFP: alpha-fetoprotein; ALB: prealbumin; GGT: glutamyl transpeptidase; HbA1C: hemoglobin A1C; CRP: C reactive protein; TC: total cholesterol; TG: triglycerides; HDL: high-density lipoprotein; LDL: low-density lipoprotein;

Table S2 Multivariate comparison of the prognostic power of TNM Stage in training cohort

	OS		DFS	
	HR(95%CI)	P value	HR(95%CI)	P value
ApoA1	0.517(0.309-0.866)	0.01	0.537(0.363-0.793)	0.002
GGT	1.715(1.068-2.756)	0.03	1.478(1.015-2.153)	0.04
AFP	1.97(1.208-3.213)	0.007	1.499(1.017-2.209)	0.04
LDL	1.969(1.086-3.569)	0.03	1.498(0.978-2.297)	0.06
Edmondson grade			1.669(1.129-2.467)	0.01
TNM stage	1.508(1.105-2.059)	0.01	1.457(1.135-1.871)	0.001

Abbreviations: AFP: alpha-fetoprotein; GGT: glutamyl transpeptidase; LDL:low-density lipoprotein; OS: overall survival; DFS: disease free survival; HR: Hazard Ratio; CI: confidence interval.

Table S3 Univariate and multivariate analyses of prognostic factors in HCC in validation cohort

Variables	OS			DFS		
	Univariate	Multivariate		Univariate	Multivariate	
	P	HR (95% CI)	P	P	HR (95% CI)	P
Gender	0.03			0.005		
Age(years)	0.51			0.16		
liver cirrhosis	0.48			0.14		
Hepatitis history	0.19			0.63		
BMI	0.12			0.29		
GLU	0.1			0.12		
APLB	0.045	0.477(0.241-0.944)	0.03	0.006	0.576(0.354-0.838)	0.03
ALT	0.22			0.1		
TB	0.83			0.11		
AFP	0.003			0.03		
ALB	0.89			0.61		

GGT	<0.001	1.914(1.133-3.232)	0.02	0.007	1.535(1.057-2.23)	0.02
CHOL	0.83			0.85		
TG	0.29			0.17		
HDL	0.32			0.98		
LDL	0.91			0.73		
Tumor size	<0.001	3.072(1.825-5.172)	<0.001	0.001	1.525(1.021-2.277)	0.04
Tumor number	0.02			0.048		
Tumor capsule	0.67			0.37		
Vascular invasion	<0.001			<0.001	1.735(1.148-2.622)	0.009
Edmondson grade	0.03			0.14		
TNM stage	0.001			0.03		
ApoA1	0.01	0.418(0.234-0.747)	0.003	0.007	0.609(0.409-0.908)	0.02
ApoB	0.06			0.63		
ApoE	0.02	1.897(1.123-3.204)	0.02	0.57		

Univariate analysis: Kaplan-Meier method; multivariate analysis: Cox proportional hazards regression model;

Abbreviations: BMI: body mass index; GLU: glucose; APLB: prealbumin; ALT: alanine aminotransferase; TB: total bilirubin; AFP: alpha-fetoprotein; ALB: prealbumin; GGT: glutamyl transpeptidase; HbA1C: hemoglobin A1C; CRP: C reactive protein; TC: total cholesterol; TG: triglycerides; HDL: high-density lipoprotein; LDL: low-density lipoprotein; OS: overall survival; DFS: disease free survival; HR: Hazard Ratio; CI: confidence interval.

Table S4 Multivariate comparison of the prognostic power of TNM Stage in validation cohort

	OS		DFS	
	HR(95%CI)	P value	HR(95%CI)	P value
APLB	0.494(0.248-0.983)	0.04	0.526(0.324-0.853)	0.009
AFP	1.755(1.037-2.97)	0.04		
GGT	2.135(1.268-3.596)	0.004	1.613(1.114-2.337)	0.01
ApoA1	0.421(0.234-0.755)	0.004	0.585(0.394-0.868)	0.008
ApoE	1.939(1.136-3.31)	0.02		
TNM stage	1.443(1.012-2.031)	0.04	1.319(0.989-1.759)	0.06

Abbreviations: APLB: prealbumin; AFP: alpha-fetoprotein; GGT: glutamyl transpeptidase; OS: overall survival; DFS: disease free survival; HR: Hazard Ratio; CI: confidence interval.

Table S5 Multivariate comparison of the prognostic power of TNM Stage for early recurrence

	early recurrence (training cohort)		early recurrence (validation cohort)	
	HR(95%CI)	P value	HR(95%CI)	P value
Gender			2.479(0.975-6.302)	0.057
AFP	1.684(1.039-2.73)	0.03	1.559(0.969-2.509)	0.07
GGT	1.681(1.045-2.703)	0.03	2.215(1.392-3.526)	0.001
Edmondson grade	1.924(1.192-3.107)	0.007		
TNM stage	1.643(1.227-2.2)	0.001		
ApoA1	0.35590.206-0.611)	<0.001	0.537(0.31-0.93)	0.03

Abbreviations: AFP: alpha-fetoprotein; GGT: glutamyl transpeptidase; HR: Hazard Ratio; CI: confidence interval.