

Supplementary materials

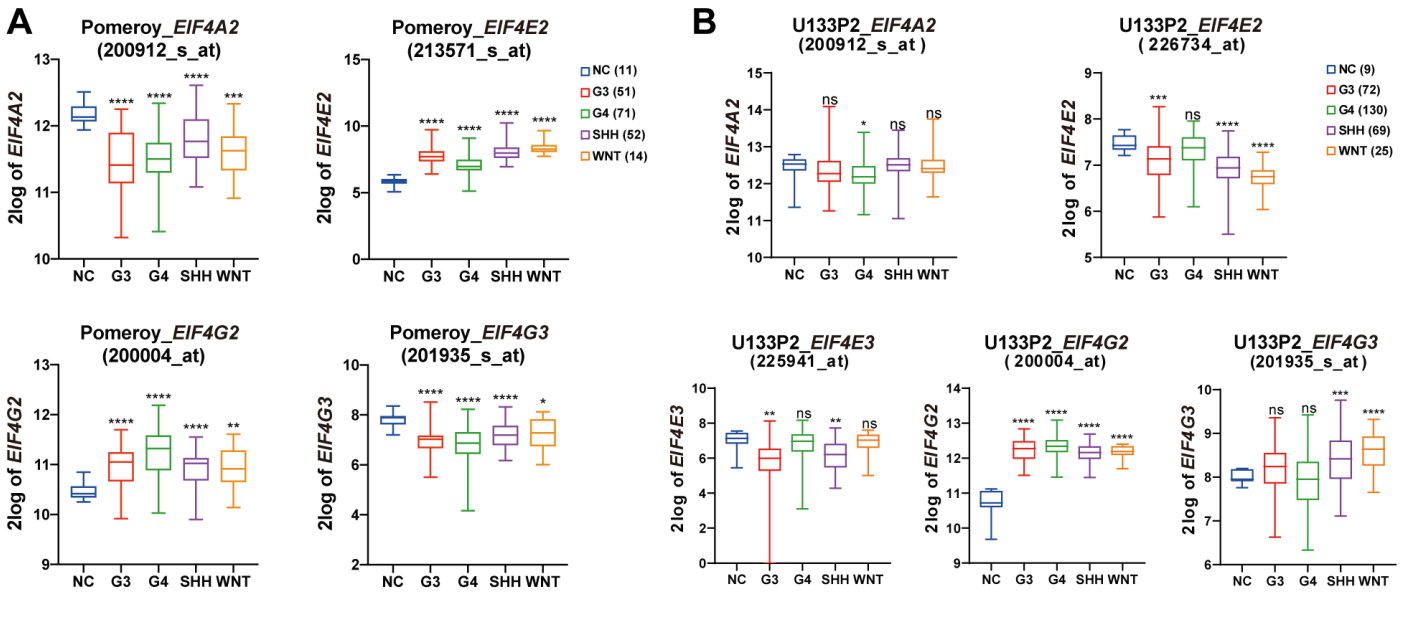
Supplementary Figure 1: *MYC* is highly correlated with *EIF4A1* in G3-MB.

The box plots showed the comparison of the log₂ transformed mRNA expression levels of eIF4F complex minor members between normal cerebella and different MB subtypes in dataset Pomeroy (n = 199) (A) or U133P2 (n = 305) (B). (C) The upper panel showed mean±sd of log₂ transformed values of *EIF4A1* from each subgroup as denoted, correlated with the *EIF4A1* panels of Figure 1C and 1D. The lower panel showed the log₂FC difference values generated from the upper one, calculated by subtracting log₂*EIF4A1* mean value of each subgroup from that of G3 within the same dataset. sd, standard deviation. (D) Scatterplots for the expression correlation of *MYC* with different subunits of eIF4F complex of MB patients in Cavalli dataset (n=763). ns, non-significant; *, $p < 0.05$; **, $p < 0.01$; ***, $p < 0.001$; ****, $p < 0.0001$. Statistical tests used here are mentioned in materials and methods. (E) Kaplan-Meier analysis of Cavalli dataset by *EIF4A1* expression level within 5 years. The graph was generated directly from R2 website on query.

Supplementary Figure 2: Band intensity quantification of Figure 4A.

(A) Bar plots of time courses of *MYC* expression ratios in drug treated G3-MB cell lines (upper panels). Band intensity was analyzed by Image J (Version 1.53a, NIH, USA). The ratios were generated over starting point after normalization by loading control (lower panel).

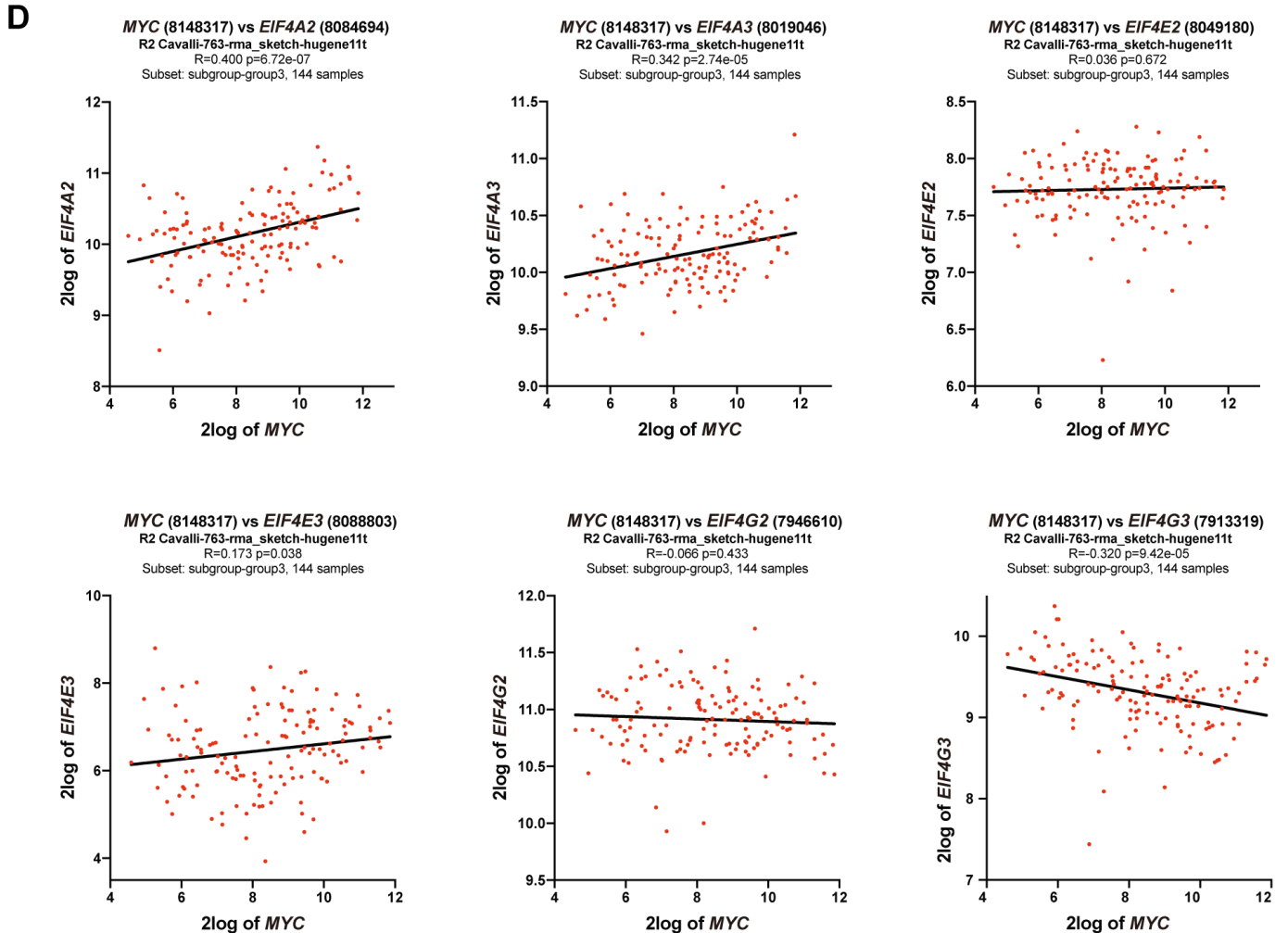
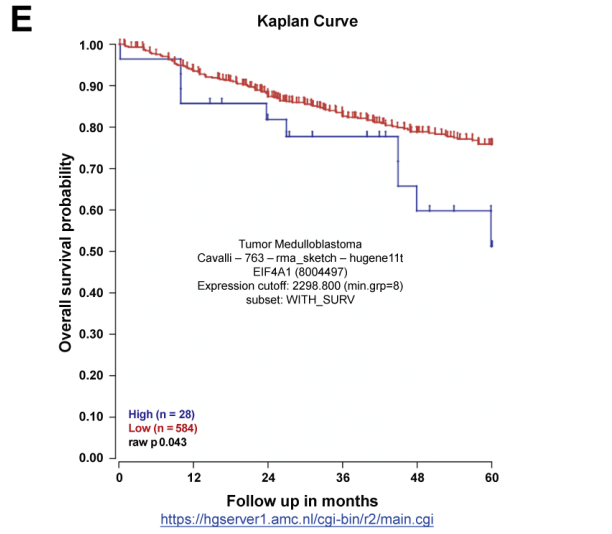
Supplementary Figure 1



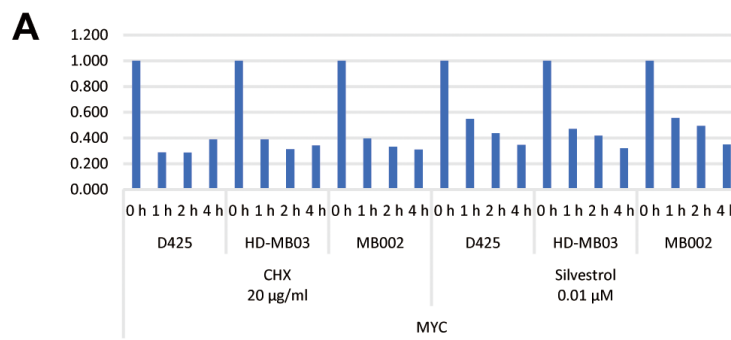
C

log2EIF4A1 (mean±sd)	NC	G3	G4	SHH	WNT
Pomeroy	8.461±0.461	9.806±1.043	8.573±1.053	9.928±1.140	9.559±0.672
U133P2	9.147±0.278	11.380±0.664	10.290±0.698	11.440±0.464	11.180±0.411

log2FC diff. from G3	G3	NC	G4	SHH	WNT
Pomeroy	0.000	1.346	1.233	-0.122	0.247
U133P2	0.000	2.233	1.092	-0.063	0.198



Supplementary Figure 2



MYC	CHX 20 µg/ml												Silvestrol 0.01 µM											
	D425				HD-MB03				MB002				D425				HD-MB03				MB002			
	0 h	1 h	2 h	4 h	0 h	1 h	2 h	4 h	0 h	1 h	2 h	4 h	0 h	1 h	2 h	4 h	0 h	1 h	2 h	4 h	0 h	1 h	2 h	4 h
	1.000	0.288	0.286	0.389	1.000	0.389	0.314	0.342	1.000	0.396	0.332	0.310	1.000	0.549	0.437	0.347	1.000	0.472	0.418	0.321	1.000	0.556	0.493	0.350

Supplementary Table 1 Nucleotide sequences used in this work

Category	Name	Sequence (5'-3')
qPrimer	MYC-F	AGAGTCTGGATCACCTTCTGCT
	MYC-R	ACACTGTCCAACCTTGACCCTCT
	OTX2-F	GCAGAGGTCCTATCCCATGA
	OTX2-R	CTGGGTGGAAAGAGAAGCTG
	GAPDH-F	TGACTTCAACAGCGACACCCA
	GAPDH-R	CACCCTGTTGCTGTAGCCAAA
sgRNA	sgCon-oligo-F	CACCGGGGCGAGGAGCTGTTCAACCG
	sgCon-oligo-R	AAACCGGTGAACAGCTCCTCGCCCC
	sgEIF4A1-oligo-F1	CACCGCACTCGAGAATTGGCTCAGC
	sgEIF4A1-oligo-R1	AAACGCTGAGCCAATTCTCGAGTGC
	sgEIF4A1-oligo-F2	CACCGACAGGGAAAACCTATATCCAC
	sgEIF4A1-oligo-R2	AAACGTGGATATAGTTTTCCCTGTC
shRNA	shScr-oligo-F	CCGGCCTAAGGTTAAGTCGCCCTCGCTCGAGCGAGGGCGACTTAACCTTAGGTTTTTG
	shScr-oligo-R	AATTCAAAAACCTAAGGTTAAGTCGCCCTCGCTCGAGCGAGGGCGACTTAACCTTAGG
	shMYC-oligo-F	CCGGCAGTTGAAACACAAACTTGAACCTCGAGTTCAAGTTTGTGTTTCAACTGTTTTTG
	shMYC-oligo-R	AATTCAAAAACAGTTGAAACACAAACTTGAACCTCGAGTTCAAGTTTGTGTTTCAACTG

Supplementary Table 2 Down-regulated genes (DRG)

Gene Symbol			
<i>PRRC2C</i>			
<i>PPM1H</i>			
<i>NQO1</i>			
<i>CSDE1</i>			
<i>RPGRIP1L</i>			
<i>CLASP2</i>			
<i>POLR3E</i>			
<i>CHCHD2</i>			
<i>KIAA0391</i>			
<i>NES</i>			
<i>EBF1</i>			
<i>CACNA2D1</i>			
<i>MAX</i>			
<i>PKN2</i>			
<i>LARP1</i>			
<i>ZNF148</i>			
<i>STK24</i>			
<i>EIF4G1</i>			
<i>COPE</i>			
<i>KIAA1143</i>			
<i>POLR2B</i>			
<i>RNF20</i>			
<i>ANAPC5</i>			
<i>DHDDS</i>			
<i>LIMD1</i>			
<i>PPP1R9B</i>			
<i>SCAF4</i>			
<i>HSPA8</i>			
<i>VPS53</i>			
<i>SPAG5</i>			
<i>BSG</i>			
<i>SNAP23</i>			
<i>EYA3</i>			
<i>STAU1</i>			
<i>CCDC22</i>			
<i>RHBDD3</i>			
<i>MTDH</i>			
<i>IMPG2</i>			
<i>GNG12</i>			
<i>HK2</i>			
<i>ACLY</i>			
<i>PDCL3</i>			
<i>TOR1AIP2</i>			
<i>SPATS2L</i>			
<i>MOB1A</i>			
<i>HSPH1</i>			
<i>SREBF2</i>			
<i>DDHD2</i>			
<i>CLPTM1</i>			

<i>ANK3</i>			
<i>UBE2S</i>			
<i>GGA2</i>			
<i>CD320</i>			
<i>PELO</i>			
<i>ATAT1</i>			
<i>MFN2</i>			
<i>XRCC4</i>			
<i>STARD7</i>			
<i>GIGYF2</i>			
<i>HSPA1B</i>			
<i>MLLT1</i>			
<i>TACC3</i>			
<i>CPLX3</i>			
<i>KIDINS220</i>			
<i>PNMA2</i>			
<i>PDCD4</i>			
<i>IRF2BP2</i>			
<i>FAM192A</i>			
<i>AKAP1</i>			
<i>MAGED2</i>			
<i>CENPF</i>			
<i>PLXNB2</i>			
<i>CCNA2</i>			
<i>MACO1</i>			
<i>TCF12</i>			
<i>TXNRD1</i>			
<i>SOD1</i>			
<i>SELENOS</i>			
<i>RAI1</i>			
<i>KPNA2</i>			
<i>RRM1</i>			
<i>NOSIP</i>			
<i>RBMX2</i>			
<i>AKAP2</i>			
<i>FASTKD1</i>			
<i>OGT</i>			
<i>TIPIN</i>			
<i>PTCD1</i>			
<i>AAMP</i>			
<i>ITGA6</i>			
<i>UBR3</i>			
<i>C12orf57</i>			
<i>SLC6A11</i>			
<i>TAF7</i>			
<i>CHMP5</i>			
<i>ABCB6</i>			
<i>CDCA2</i>			
<i>FAM91A1</i>			
<i>GNAI3</i>			
<i>SRGAP2</i>			
<i>ANAPC1</i>			

<i>BCAM</i>			
<i>MPHOSPH8</i>			
<i>AFAP1</i>			
<i>PHF23</i>			
<i>CTNND1</i>			
<i>CDK12</i>			
<i>RRBP1</i>			
<i>MORF4L1</i>			
<i>COPRS</i>			
<i>MAGED1</i>			
<i>SMIM4</i>			
<i>BTF3</i>			
<i>EEF2K</i>			
<i>CAMSAP3</i>			
<i>PRRC2B</i>			
<i>TIMM8B</i>			
<i>MLF2</i>			
<i>RNF220</i>			
<i>GAP43</i>			
<i>CDC20</i>			
<i>ADAMTS4</i>			
<i>ACBD6</i>			
<i>MAP7D1</i>			
<i>PRKACA</i>			
<i>HES1</i>			
<i>YME1L1</i>			
<i>LSM14B</i>			
<i>ARHGEF10</i>			
<i>TK1</i>			
<i>PET100</i>			
<i>SDCCAG8</i>			
<i>TPX2</i>			
<i>WARS2</i>			
<i>LARP4</i>			
<i>KMT2D</i>			
<i>MLLT10</i>			
<i>PAM16</i>			
<i>NUDT11</i>			
<i>SLK</i>			
<i>UCK2</i>			
<i>DUSP9</i>			
<i>DNAJA1</i>			
<i>PCLAF</i>			
<i>CNTN1</i>			
<i>MAP1A</i>			
<i>PIK3R4</i>			
<i>GNL3L</i>			
<i>AMBRA1</i>			
<i>AURKB</i>			
<i>VPS26B</i>			
<i>TRAM1</i>			
<i>UPF3A</i>			

<i>PAIP1</i>			
<i>DNAJC15</i>			
<i>GMNN</i>			
<i>SUZ12</i>			
<i>KLF16</i>			
<i>HOOK1</i>			
<i>GIPC1</i>			
<i>PLD3</i>			
<i>RBP3</i>			
<i>APBB2</i>			
<i>DNA2</i>			
<i>NOTCH2</i>			
<i>SLC4A2</i>			
<i>FRMPD2</i>			
<i>EIF4ENIF1</i>			
<i>CCNB1</i>			
<i>NRP2</i>			
<i>TCAF1</i>			
<i>ABCA3</i>			
<i>LGALS3BP</i>			
<i>NRCAM</i>			
<i>GOLM1</i>			
<i>BRD2</i>			
<i>MOCS2</i>			
<i>SCARA3</i>			
<i>SAPCD2</i>			
<i>SLC1A5</i>			
<i>GTSE1</i>			
<i>DLGAP5</i>			
<i>IRS1</i>			
<i>SHROOM3</i>			
<i>LMBRD2</i>			
<i>TMEM160</i>			
<i>MORF4L2</i>			
<i>RNF14</i>			
<i>C18orf25</i>			
<i>HELLS</i>			
<i>C8orf59</i>			
<i>UBE2T</i>			
<i>ANLN</i>			
<i>CST3</i>			
<i>DOCK6</i>			
<i>SLC39A10</i>			
<i>PEG10</i>			
<i>PNMA8A</i>			
<i>STMN3</i>			
<i>SQLE</i>			
<i>IGFBP2</i>			
<i>SCD</i>			
<i>EPHB4</i>			
<i>SLC29A1</i>			
<i>MRFAP1</i>			

<i>AUTS2</i>			
<i>HSBP1</i>			
<i>CCND3</i>			
<i>PKMYT1</i>			
<i>C14orf119</i>			
<i>FTL</i>			
<i>SLC29A2</i>			
<i>CLU</i>			
<i>OBSL1</i>			
<i>DNAJB14</i>			
<i>SERPINF1</i>			
<i>NKIRAS1</i>			
<i>ZZEF1</i>			
<i>FADS2</i>			
<i>HECTD1</i>			

Supplementary Table 3 Up-regulated genes (URG)			
Gene Symbol			
<i>MCEE</i>			
<i>EIF4A2</i>			
<i>ZBTB1</i>			
<i>RRM2</i>			
<i>NGLY1</i>			
<i>TMSB4X</i>			
<i>HMGCL</i>			
<i>POLB</i>			
<i>PCK2</i>			
<i>TMEM41B</i>			
<i>NCOR1</i>			
<i>CASC3</i>			
<i>FHOD1</i>			
<i>RPS19BP1</i>			
<i>PARP1</i>			
<i>DUSP3</i>			
<i>NOL7</i>			
<i>ACBD7</i>			
<i>TGOLN2</i>			
<i>PPA2</i>			
<i>SNX6</i>			
<i>UBXN7</i>			
<i>NUDCD2</i>			
<i>PDLIM7</i>			
<i>NT5C</i>			
<i>MTX3</i>			
<i>ATP5IF1</i>			
<i>FNDC3A</i>			
<i>BCKDHA</i>			
<i>ICAM5</i>			
<i>SUCLG1</i>			
<i>PPIL1</i>			
<i>KMT2A</i>			
<i>IMPACT</i>			
<i>PLPP6</i>			
<i>SAMM50</i>			
<i>TMEM245</i>			
<i>HSD17B8</i>			
<i>DBT</i>			
<i>S100A13</i>			
<i>NAGA</i>			
<i>MSI1</i>			
<i>HARS2</i>			
<i>MRPS12</i>			
<i>C11orf68</i>			
<i>ACADS</i>			
<i>MRPL12</i>			
<i>NDUFAF7</i>			
<i>PD XK</i>			

<i>DDRGK1</i>			
<i>RNF114</i>			
<i>OXCT1</i>			
<i>SYP</i>			
<i>CDKN2C</i>			
<i>NOP56</i>			
<i>ZNF768</i>			
<i>WDFY1</i>			
<i>ECH1</i>			
<i>APRT</i>			
<i>GSTP1</i>			
<i>TPI1</i>			
<i>SUCLG2</i>			
<i>SFPQ</i>			
<i>RING1</i>			
<i>ACO2</i>			
<i>ALDH2</i>			
<i>C1QBP</i>			
<i>CD276</i>			
<i>CARS</i>			
<i>PSAT1</i>			
<i>MRPL46</i>			
<i>TBCC</i>			
<i>H1FX</i>			
<i>PSPC1</i>			
<i>CBR4</i>			
<i>EML2</i>			
<i>ILKAP</i>			

Supplementary Table 4 Corrected CERES scores of DRG

Corrected CERES score (19Q1)							
Expression (log2FC)	Gene Symbol	D283MED CENTRAL NERVOUS SYSTEM	D341MED CENTRAL NERVOUS SYSTEM	D425 CENTRAL NERVOUS SYSTEM	D458 CENTRAL NERVOUS SYSTEM	Count fo Neg.	Summerization
-1.220645402	CLASP2	#N/A	#N/A	#N/A	#N/A	0	#N/A
-1.369708976	PPP1R9B	#N/A	#N/A	#N/A	#N/A	0	Neg. in at least 2 cell lines
-1.443654669	CCDC22	#N/A	#N/A	#N/A	#N/A	0	Neg. in less than one cell lines
-1.692041526	MAGED2	#N/A	#N/A	#N/A	#N/A	0	
-1.70812897	MACO1	#N/A	#N/A	#N/A	#N/A	0	
-1.729549487	SELENOS	#N/A	#N/A	#N/A	#N/A	0	
-1.753692227	RBMX2	#N/A	#N/A	#N/A	#N/A	0	
-1.789499347	OGT	#N/A	#N/A	#N/A	#N/A	0	
-1.91080449	SIRGAP2	#N/A	#N/A	#N/A	#N/A	0	
-1.984535992	MAGED1	#N/A	#N/A	#N/A	#N/A	0	
-2.218451136	NUDT11	#N/A	#N/A	#N/A	#N/A	0	
-2.242308801	DUSP9	#N/A	#N/A	#N/A	#N/A	0	
-2.264882523	PCLAF	#N/A	#N/A	#N/A	#N/A	0	
-2.31936043	GNL3L	#N/A	#N/A	#N/A	#N/A	0	
-2.578040589	DNA2	#N/A	#N/A	#N/A	#N/A	0	
-2.727597628	TCAF1	#N/A	#N/A	#N/A	#N/A	0	
-3.044914742	MORFAL2	#N/A	#N/A	#N/A	#N/A	0	
-3.260513129	PNMABA	#N/A	#N/A	#N/A	#N/A	0	
-4.099317134	DNAJB14	0.120873238	0.059658862	0.115506904	0.061139225	0	
-3.953343965	FTL	0.020755994	0.150977771	0.025035229	0.093267243	0	
-3.393468792	IGFBP2	0.139236598	0.171514938	0.257854951	0.333812959	0	
-3.009117412	LMBRD2	0.038702056	0.076900321	0.051846509	0.133578882	0	
-2.544970618	APBB2	0.066314767	0.062097633	0.079651761	0.056722841	0	
-2.392123305	TRAM1	0.248423396	0.160349945	0.17638758	0.168663422	0	
-2.388320068	VPS26B	0.04532003	0.006150822	0.070484019	0.009786266	0	
-2.2969374	MAP1A	0.019683617	0.097038316	0.014850519	0.071058831	0	
-2.122875949	ARHGAP10	0.003166377	0.118488379	0.110557238	0.102636138	0	
-2.12242617	LSM14B	0.014181875	0.097963231	0.264235527	0.113603998	0	
-2.071956059	GAP43	0.043435222	0.261798869	0.304376759	0.320119868	0	
-2.002164866	EEF2K	0.043117226	0.140286332	0.024415731	0.255337082	0	
-1.925074649	AFAP1	0.036312275	0.083774188	0.026091049	0.131167676	0	
-1.856115592	SLC6A11	0.122025729	0.084079375	0.062361343	0.109628399	0	
-1.642502248	PODCA2	0.14678695	0.107823353	0.05623043	0.069045658	0	
-1.46827246	GNG12	0.018394415	0.076469755	0.022877555	0.028000474	0	
-1.214968625	RPGRIPI1	0.274855441	0.174182672	0.160933016	0.042077849	0	
-4.032587437	CLU	-0.014696649	0.110022454	0.022369446	0.112649141	1	
-3.257729321	PEG10	0.164433763	0.04863835	-0.221308935	0.14553507	1	
-3.066268843	C18orf25	0.114156991	-0.005950746	0.097977464	0.092695716	1	
-2.86156998	SCARA3	-0.036793992	0.060827624	0.147719096	0.015803393	1	
-2.83546084	NRCAM	0.060519497	0.039422089	0.200959143	-0.001047031	1	
-2.598308665	SLC4A2	-0.044904327	0.237143819	0.106506936	0.230295108	1	
-2.489489883	GIPC1	-0.044859387	0.016358922	0.264666842	0.142049183	1	
-2.479512715	HOOX1	0.031754297	0.0611101041	-0.211998533	0.004148301	1	
-2.423361671	DNAUC15	-0.172731095	0.086869032	0.208873825	0.095754808	1	
-2.323075349	AMBRA1	0.094660462	0.434763881	0.305754168	-0.318154543	1	
-2.291992902	CNTN1	0.151156412	0.023596219	0.082510175	-0.024674514	1	
-2.144115637	SDCCAG8	-0.060838508	0.106295634	0.113834617	0.214039011	1	
-2.104216488	ACBD6	#N/A	0.149161126	0.161567664	-0.034106388	1	
-1.985066445	SMIM4	-0.097734638	0.078868292	0.071620513	0.201550292	1	
-1.954948566	RBBP1	0.095796269	0.061938264	-0.127926245	0.087064511	1	
-1.943963158	CTNND1	0.051047021	0.011362186	-0.213158237	0.096441287	1	
-1.846475814	C12orf57	0.083820761	0.057599545	-0.052203809	0.033371114	1	
-1.768201753	AKAP2	0.194085101	0.016639117	0.118244859	-0.023238926	1	
-1.704441599	PLXNB2	-0.136769827	0.013598881	0.07899748	0.26810853	1	
-1.641290071	PNMA2	0.221511361	0.185987103	0.093698567	-0.03717369	1	
-1.633537092	CPLX3	0.168682211	0.15424459	-0.171331319	0.136950682	1	
-1.561272622	GGA2	0.070527655	0.040723151	0.150925295	-0.035216865	1	
-1.52514518	MOB1A	-0.047982458	0.012987409	0.08302459	0.072774449	1	
-1.314486164	STK24	0.085305698	-0.021101778	0.115205679	0.123631837	1	
-1.306093982	ZNF148	0.001389205	0.147188932	-0.039707061	0.193978157	1	
-4.945674989	FADS2	-0.271921172	-0.171305735	0.002388545	0.00489775	2	
-3.929192694	C14orf119	0.066211575	-0.061537187	-0.218200306	0.012963205	2	
-3.461460904	EPHB4	0.097932397	-0.031495232	-0.032235026	0.137034361	2	
-3.085562877	HELLS	0.016829695	-0.078082646	0.017111256	-0.115584756	2	
-3.037441553	TMEM160	0.127347932	-0.188716133	-0.246345362	0.042421935	2	
-3.00078743	SHROOM3	-0.058011462	-0.072806522	0.020077917	0.012185128	2	
-2.628594666	FRMPD2	0.044298118	-0.07382916	-0.039212432	0.138678323	2	
-2.597638172	NOTCH2	0.125557738	0.033379809	-0.035730365	-0.045564156	2	
-2.18755351	MILL10	0.210837391	0.015896633	-0.048361642	-0.054022889	2	
-2.123831734	PET100	-0.206079699	0.02425943	0.178528385	-0.190261881	2	
-2.11302027	PRKACA	-0.298802867	-0.118118376	0.000360558	0.01038062	2	
-2.096697446	ADAMTS4	0.130878666	-0.064536324	0.111978658	-0.00459508	2	
-2.058306677	RNF220	-0.277978329	0.07181053	0.037837144	-0.086449653	2	
-2.006648563	CAMSAP3	0.110453431	-0.085334449	-0.152987365	0.036152787	2	
-1.918947833	BCAM	0.050940827	-0.010734115	0.155592664	-0.045635124	2	
-1.78526624	FASTKD1	-0.107346213	-0.008415516	0.055451499	0.297352634	2	
-1.730155687	RAI1	0.085586888	-0.088203733	-0.090395434	0.042795166	2	
-1.708364253	TCF12	-0.215054478	0.141718487	-0.170123314	0.192462187	2	
-1.667659628	FAM192A	-0.07860119	-0.079281116	0.066724364	0.035934505	2	
-1.618313371	MILLI	-0.10367468	-0.200624784	0.098548001	0.063253595	2	
-1.539289749	DDHD2	0.203339484	0.060952638	-0.082337492	-0.014653032	2	
-1.46021874	IMPG2	0.282782654	-0.101596485	0.021619219	-0.00031275	2	
-1.290094358	CACNA2D1	0.033868928	-0.091416369	0.013715107	-0.238184874	2	
-1.277169376	EBF1	0.088960228	0.24345093	-0.303997974	-0.114991105	2	
-1.204458685	NCO1	0.051924785	-0.025337694	0.15601203	-0.047070048	2	
-5.138912693	HECTD1	-0.302535281	-0.333903578	0.01534559	-0.515434111	3	
-3.629645467	MRFAP1	-0.100784321	-0.03505336	-0.082052273	0.257988303	3	
-3.49064648	SLC29A1	-0.301502191	0.041304985	-0.246502585	-0.220386452	3	
-3.404364143	SCD	0.006781497	-0.181626851	-0.371326658	-0.209956454	3	
-3.27450038	STMN3	0.092209723	-0.063277781	-0.110296579	-0.002804746	3	
-2.989755198	IRS1	0.172802365	-0.09937819	-0.533728363	-0.149313792	3	
-2.888327615	SAPCD2	-0.010253203	0.013042975	-0.187628149	-0.121065882	3	
-2.85074025	MOCOS2	-0.012849648	-0.018026734	-0.206431565	0.009039713	3	
-2.843804852	BRD2	-0.389816652	-0.476573777	-0.238915299	0.086495996	3	
-2.841543744	GOLM1	0.093176747	-0.001275463	-0.035360081	-0.031068769	3	
-2.737125662	ABCA3	#N/A	-0.026040718	-0.010317492	-0.088828046	3	
-2.533490486	RBP3	-0.021081274	-0.025059046	-0.123209422	0.033871007	3	
-2.498159463	PLD3	-0.011094217	-0.034622191	-0.056148544	0.062044918	3	
-2.412400202	PAIP1	0.368016576	-0.120294146	-0.079741004	-0.061127915	3	

-2.242070956	UCK2	0.106790893	-0.136338338	-0.161054574	-0.174722996	3
-2.179101369	KMT2D	0.196218833	-0.521185046	-0.867776992	-0.321476527	3
-2.115782729	HES1	-0.155516252	-0.204870917	0.004552053	-0.047496305	3
-2.110456827	MAP7D1	0.139435695	-0.15996436	-0.115216999	-0.169715128	3
-2.043410504	MLF2	-0.111206597	0.02137321	-0.209635388	-0.128484445	3
-2.01486126	PRRC2B	0.130221301	-0.174255657	-0.045489093	-0.169823676	3
-1.91899205	MPHOSPH8	-0.397163774	-0.129235352	-0.022148257	0.13212157	3
-1.907421971	GNAI3	-0.095479608	-0.048120283	0.042404613	-0.031730109	3
-1.876770207	ABC96	#N/A	-0.048815596	-0.043818246	-0.125221771	3
-1.83529286	UBR3	0.170500644	-0.278591444	-0.130836644	-0.000204099	3
-1.825843018	AAMP	#N/A	-0.705044536	-0.770625483	-0.78087717	3
-1.745578084	NOSIP	-0.356678337	-0.213393498	-0.169079888	0.029074958	3
-1.730410046	KPNA2	-0.321924285	0.215624565	-0.325640638	-0.068823482	3
-1.66956892	AKA1P	-0.061316474	-0.054091228	-0.206218511	0.094006418	3
-1.642691276	IRF2BP2	-0.079499121	-0.272382528	0.09524385	-0.14120532	3
-1.602906114	GIGYF2	-0.09939443	0.072689933	-0.057245577	-0.081035727	3
-1.575357639	CD320	0.016127855	-0.080428243	-0.062650023	-0.0586656384	3
-1.546802594	ANK3	-0.290544432	0.035956804	-0.187648908	-0.046322363	3
-1.536185675	SREBF2	-0.431882109	-0.004942515	-0.368675572	0.057026745	3
-1.530162156	HSPH1	0.031489981	-0.037358989	-0.063706769	-0.023367607	3
-1.49516757	PDCL3	0.138369759	-0.06532273	-0.161279012	-0.192559228	3
-1.451952087	RHBDD3	0.107246897	-0.008537805	-0.210206455	-0.074071588	3
-1.430966047	EYA3	-0.153395399	-0.108911702	0.117377343	-0.092789316	3
-1.385976794	VPSS3	-0.363090964	0.016534109	-0.200313013	-0.170807626	3
-1.305306722	PKN2	0.226756157	-0.173115977	-0.332330988	-0.141031957	3
-4.509561557	ZZEF1	-0.14925743	-0.115236612	-0.053065928	-0.016835686	4
-4.446872786	NKIRAS1	-0.164225682	-0.081101525	-0.000739244	-0.117385032	4
-4.165721363	SERPINF1	-0.062347185	-0.009050953	-0.290109481	-0.162307385	4
-4.074171272	ORSL1	-0.448480809	-0.323839601	-0.165891989	-0.295937708	4
-3.971063092	SLC29A2	-0.05528478	-0.14329224	-0.19667589	-0.094825862	4
-3.914176522	PKMYT1	-1.035969985	-0.677467857	-0.734289004	-1.000200816	4
-3.787818013	CND3	-0.103700345	-0.208356278	-0.82150884	-0.330573651	4
-3.651358749	HSBP1	-0.181846877	-0.07513838	-0.331841896	-0.11252451	4
-3.638144	AUTS2	-0.263038782	-0.134671915	-0.040055824	-0.114510794	4
-3.344934684	SOLE	-0.175868049	-0.009211296	-0.14372814	-0.149493223	4
-3.248551012	SLC39A10	-0.433836073	-0.531987171	-0.276441985	-0.369227283	4
-3.211609385	DCC6	-0.423256012	-0.413318777	-0.189350344	-0.315483795	4
-3.208565406	CST3	-0.125640549	-0.222480201	-0.130250434	-0.109614734	4
-3.143680506	ANLN	-0.748879842	-0.143018875	-0.346100024	-0.343335371	4
-3.11108624	UBE2T	-0.377657307	-0.332323899	-0.30244884	-0.149141763	4
-3.103518162	C8orf59	-0.484629446	-0.578201222	-0.539184786	-0.364865074	4
-3.061530236	RNF14	-0.32807364	-0.523288629	-0.529393278	-0.199901908	4
-2.950000848	DLAGAP5	-0.102962719	-0.363316301	-0.706297307	-0.633102429	4
-2.936518017	GTSE1	-0.369214864	-0.183929658	-0.360365498	-0.357899984	4
-2.901108704	SLC1A5	-0.290085356	-0.228151687	-0.138698274	-0.284419541	4
-2.786654511	LGALS3BP	-0.378999834	-0.294672667	-0.309719647	-0.227046109	4
-2.714665585	NRP2	-0.273643734	-0.183354947	-0.339183773	-0.250631769	4
-2.71098367	CCNB1	-0.868222735	-0.657184689	-0.924165756	-0.692722024	4
-2.70739101	E1FAENF1	-0.23561542	-0.038684661	-0.240627841	-0.248307311	4
-2.478359334	KLF16	-0.631510338	-0.265134807	-0.074039752	-0.479633184	4
-2.468482825	SUZ12	-0.423281272	-0.264050671	-0.198427658	-0.347624286	4
-2.458288498	GMNIN	-0.607847367	-0.211976747	-0.430090532	-0.143165977	4
-2.400863829	UPF3A	-0.316640087	-0.443380832	-0.404334989	-0.344244363	4
-2.367260595	AURKB	-1.379067545	-1.117275459	-1.254397175	-1.378486782	4
-2.30807809	PIK3R4	-0.243263775	-0.387962767	-0.578115618	-0.272689975	4
-2.248463079	DNAJA1	-0.629279246	-0.494929254	-0.494432681	-0.304817379	4
-2.234394652	SLK	-0.02415857	-0.164082399	-0.195109031	-0.062689552	4
-2.207197992	PAM16	-1.118117342	-1.210963506	-1.096028357	-0.937008987	4
-2.175886125	LARP4	-0.380412818	-0.226250139	-0.266360114	-0.406809124	4
-2.157469214	WARS2	-0.237883514	-0.115203987	-0.354132322	-0.421637658	4
-2.148429019	TPX2	-1.113649074	-0.827994553	-0.883607813	-1.125422593	4
-2.122981258	TK1	-0.624267133	-0.06481605	-0.151556303	-0.285672147	4
-2.11762371	YME1L1	-0.028907729	-0.158851523	-0.283372382	-0.150854072	4
-2.089645764	CDC20	-1.245704853	-1.229414187	-1.184565739	-1.148756966	4
-2.018055977	TMM6B	-0.142095449	-0.216278377	-0.268132887	-0.160020591	4
-2.000301674	BTF3	-0.363590924	-0.365406301	-0.264268086	-0.187072948	4
-1.969754532	COPRS	-0.084785724	0.26013754	-0.338659003	-0.28450619	4
-1.956610639	MORF4L1	-0.343946335	-0.053171946	-0.027914571	-0.149528754	4
-1.952522019	CDK12	-0.196294185	-0.27904124	-0.366209195	-0.340232354	4
-1.934679804	PHF23	-0.168583035	-0.260202481	-0.363997392	-0.10943819	4
-1.912674687	ANAPC1	-0.697810932	-0.64666665	-0.821427283	-0.79030814	4
-1.906953467	FAM91A1	-0.405840582	-0.015974635	-0.231039559	-0.085312996	4
-1.88762224	CDCA2	-0.022764273	-0.074310777	-0.003995301	-0.014860273	4
-1.872292683	CHMP5	-0.306093934	-0.476552506	-0.447216566	-0.644195736	4
-1.865722786	TAF7	-0.898516383	-0.848076109	-0.872557997	-0.825814883	4
-1.833471964	ITGA6	-0.061268873	-0.137380499	-0.061817043	-0.21363894	4
-1.800504575	PTCD1	-0.42277225	-0.101906231	-0.323455952	-0.580635957	4
-1.797778225	TIPIN	-0.63646358	-0.686676213	-0.599836312	-0.75044827	4
-1.737418944	RRM1	-1.402301356	-1.384456576	-1.452092865	-1.58010686	4
-1.721360192	SOD1	-1.274285209	-0.699782688	-1.20234072	-1.353549703	4
-1.709898432	TXNRD1	-0.925574604	-0.796951981	-0.402149727	-0.531493263	4
-1.704782339	CCNA2	-1.032713953	-1.036353341	-0.787120235	-1.16650094	4
-1.702518177	CENPF	-0.344822345	-0.197770337	-0.246867115	-0.331758807	4
-1.636900027	KIDINS220	-0.246147812	-0.006520249	-0.147921956	-0.141226068	4
-1.632311568	TACC3	-0.361552903	-0.642763129	-0.609355972	-0.540697099	4
-1.60798793	HSPA1B	-0.082330197	-0.212422976	-0.167179313	-0.202840843	4
-1.600779638	STARD7	-0.535033076	-0.403637205	-0.422780305	-0.315985638	4
-1.591607974	XRCC4	-0.263881688	-0.273064763	-0.336183908	-0.433624938	4
-1.588980176	MFN2	-0.422548489	-0.310205562	-0.759669368	-0.55477673	4
-1.584534468	ATAT1	-0.144839407	-0.089287932	-0.028959337	-0.156076757	4
-1.581826841	PELO	-0.664227724	-0.627005828	-1.345961113	-0.637787851	4
-1.557521978	UBE2S	-0.287274195	-0.319534772	-0.429977622	-0.542519514	4
-1.542817926	CLPTM1	-0.141207205	-0.137380133	-0.097270996	-0.174382494	4
-1.512864108	SPATS2L	-0.057400904	-0.12381207	-0.100888974	-0.009833866	4
-1.502318113	TOR1AIP2	-0.290959597	-0.087794807	-0.081397827	-0.140965451	4
-1.487273326	ACLY	-0.135278915	-0.279317851	-0.230399727	-0.307646482	4
-1.472928297	HK2	-0.212856695	-0.512796898	-0.360251508	-0.512858971	4
-1.453392356	MTDH	-0.092830886	-0.086730268	-0.129244093	-0.102731594	4
-1.438391163	STAU1	-0.144680375	-0.003091348	-0.118806622	-0.056791648	4
-1.430217143	SNAP23	-0.827956555	-0.424032084	-0.846069188	-0.741865398	4
-1.412525599	BSG	-0.266060311	-0.19671323	-0.584003522	-0.273096899	4
-1.396587557	SPAG5	-0.290737691	-0.19855447	-0.156322763	-0.237360569	4
-1.38498825	HSPA8	-0.300893999	-0.414580288	-0.434010497	-0.239829564	4
-1.373239248	SCAF4	-0.215486833	-0.227886043	-0.592155159	-0.239880871	4

-1.366234209	<i>LIMD1</i>	-0.144008463	-0.254065896	-0.265723061	-0.353869244	4	
-1.357158146	<i>DHDDS</i>	-0.812828603	-1.033502637	-1.002175774	-0.931962125	4	
-1.351888595	<i>ANAPC5</i>	-0.762265657	-0.70535939	-0.774459545	-0.732985082	4	
-1.342825857	<i>RNF20</i>	-0.562108559	-0.502477865	-0.469915709	-0.481619383	4	
-1.341844183	<i>POLR2B</i>	-1.019688475	-1.229606212	-1.191230153	-1.270290241	4	
-1.337675569	<i>KIAA1143</i>	-0.34649746	-0.240392858	-0.197331768	-0.182907637	4	
-1.327789269	<i>COPE</i>	-0.80745016	-0.803157508	-1.140183519	-0.907409479	4	
-1.320597751	<i>EIF4G1</i>	-0.755631896	-0.628853159	-0.902381967	-0.686470069	4	
-1.305456953	<i>LARP1</i>	-0.361152854	-0.337170993	-0.074652787	-0.62458849	4	
-1.302433365	<i>MAX</i>	-0.479703923	-0.443319062	-0.474743215	-0.596605968	4	
-1.268186405	<i>NES</i>	-0.15825527	-0.184496811	-0.371846102	-0.339236815	4	
-1.244606112	<i>KIAA0391</i>	-0.483053862	-0.219716584	-0.51633775	-0.718718085	4	
-1.239088178	<i>CHCHD2</i>	-0.457118721	-0.404499414	-0.546703148	-0.339641515	4	
-1.237106443	<i>POLR3E</i>	-0.698514592	-0.75842631	-0.740622895	-0.670102665	4	
-1.211458644	<i>CSDE1</i>	-0.399370518	-0.139678366	-0.345090937	-0.292973533	4	
-1.202278421	<i>PPM1H</i>	-0.175061133	-0.089041554	-0.073913747	-0.060664314	4	
-1.200598168	<i>PRRC2C</i>	-0.101842914	-0.18734038	-0.211696743	-0.048175105	4	